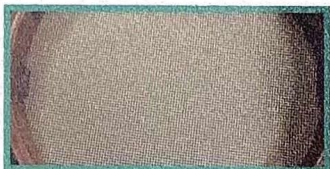
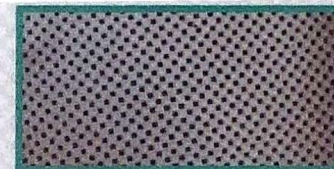


## ACCEPTABLE



Acceptable Core: Small cavities in end plugs are acceptable. Inlet side has high concentration of soot on the face; this is also acceptable.



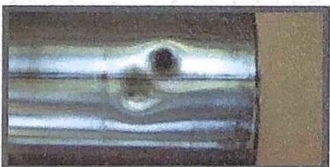
## UNACCEPTABLE

### EXTERNAL DAMAGE



### DESCRIPTION

**1.1 RIM DAMAGE**  
Not bent or damaged  
+/- 4mm



**1.2 CANNING DAMAGE**  
No holes acceptable, No dents exceeding size of Nickel.



**1.3 SUBSTRATE MOVEMENT WITHIN SLEEVE**

Substrate cannot be in contact or protrude beyond sensor ports or flange.

### DESCRIPTION

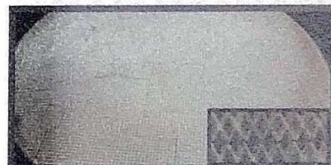
**2.1 - CRACKS & FACIAL CRACKS**

Maximum of 3 cracks per face, not to exceed more than 9 cells.

**2.2 - FACE GOUGES**

Maximum of 3 gouges per face, max gouge depth - 4mm

### SUBSTRATE DAMAGE OR DETERIORATION



**2.3 - EVIDENCE OF MELTING OR EXTREME MELTING**

Melting damage is evident from black cells on the filter face of the outlet (clean) side. Can be verified by pin gauging the unit 10 places on outlet. Pin will not go through substrate.



### ADDRESS:

CERAMEX N.A.  
CORE HANDLING FACILITY  
601 N. 14th STREET  
MONETT, MO 65708