

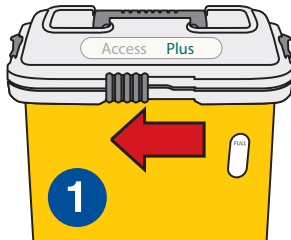
# Sharpsmart

## Access Plus

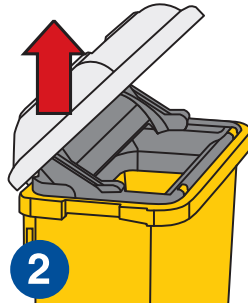
### INSTRUCTIONS FOR USE



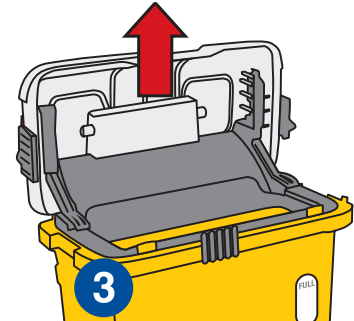
#### OPEN



1. Slide front lock to left.

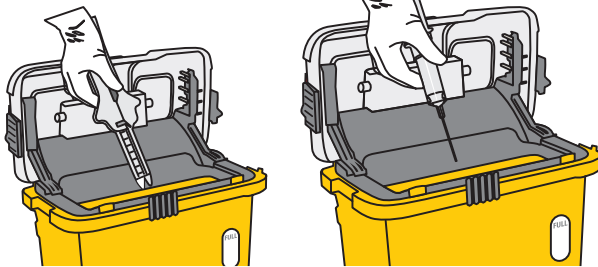


2. Lift lid to 45 degrees for semi-access opening.



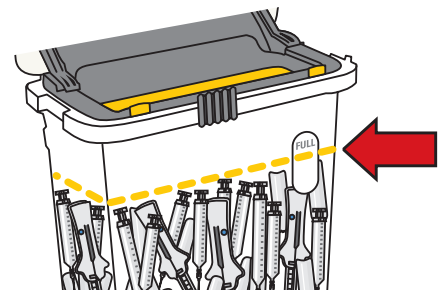
3. Lift lid to 90 degrees for full access opening.

#### USAGE



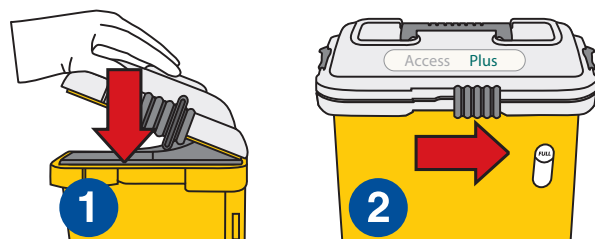
1. Drop items point downwards into opening.

#### FULL



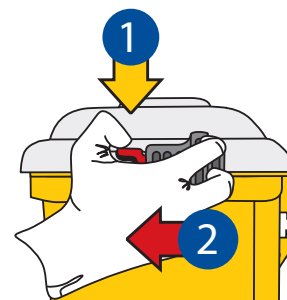
When sharps reach fill level, Access Plus collector is full and must be locked and replaced.

#### CLOSE



1. Press lid down firmly.  
2. Slide front lock fully to right.

#### LOCK



1. Depress red tabs.  
2. Slide locks completely forward.  
**NOTE: Side locks are permanent!**

#### REMEMBER:

- Never put hands into sharps collector.
- Always close collector before moving / removing collector.
- Do not deface or write on collector.
- Always dispose sharps and sharps safety devices into sharps collectors.



daniels@compass.za.net  
[www.danielscompass.co.za](http://www.danielscompass.co.za)