

SPECIFICATIONS

- + 32 Bit ARM M4 Processor
- + Dual 24 bit sigma-delta ADC's for weight measurement
- + 3 Axis Accelerometer
- + Temperature Sensor
- + Built in Tachometer
- + Energy Harvesting Generator
- + Battery Operation when belt stopped (8 hours)
- + Belt Speed 0.6 to 6 m/s
- + Wifi Station, Wifi Access Point and Bluetooth Communication to User
- + XBee Mesh network roll to roll communication

IntelliRoll®

AUTONOMOUS WEIGH ROLL UNIT

BELT WEIGHING MADE SIMPLE

INTELLIROLL® CONTROLLER

INTELLIROLL SMART PHONE APP

Easy communication without wiring.
Wifi and Bluetooth app for iphone and Android devices.

All the data straight to your phone!



IntelliRoll®

AUTONOMOUS WEIGH ROLL UNIT

DISRUPTIVE BELT SCALE TECHNOLOGY FOR:

- + Process Control Belt Scales
- + Process Investigations
- + Ad Hoc Process Testing
- + Backup Belt Scales

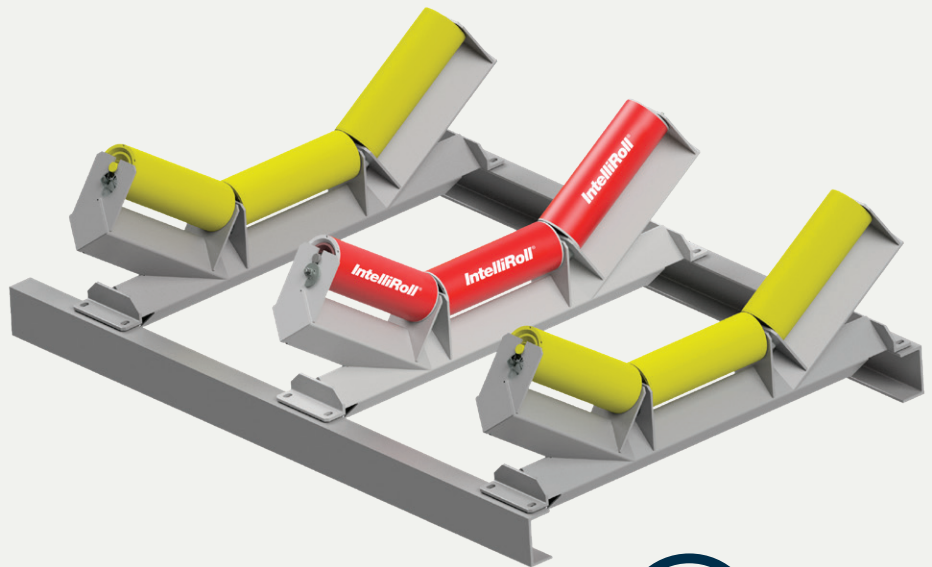
ACCURACY:

Static repeatability within 0.1% of test weight with very stable zero.

PERFORMANCE:

In the order of +/-3.0% after factoring.

- + No Cables, Self Powered
- + Wifi User Connectivity
- + Pre-Calibrated
- + Precision, Long Lasting Weighing Components
- + Communicates to user interface on your iPhone or Android or application running on Windows or Apple macOS



INTELLIROLL INTERFACE TO SMARTPHONE APP or CST intelligent cargo scale panel.

Users can download all data to their device when within wifi range of an IntelliRoll set.

Alternatively can be connected to the site PLC control systems via Modbus TCP Protocol.

Cloud connectivity via compatible iot gateway.



INTELLIROLL® CONTROLLER

Get the app



CONTROLLER

MODEL MaVIS ICS ARM



The Intelligent Cargo Scale is one of the most advanced multifunctional weighing electronics in the world. It has the following capabilities and configurations.

- + 1 or 2 belt weighers or
- + 1 or 2 bins scales, or
- + 1 Belt weigher and 1 bin scale

plus

- + 1 or 2 flow controllers
- + High reliability dual in-line belt weigher
- + Loss in weight systems
- + Trade Certified Applications
- + Integrated Laser Scanner for Bulk Density Measurement
- + Many communication protocols available including Modbus TCP etc.

BELT WEIGHER PERIPHERALS

MODEL SIP*

STORED IN PLACE CALIBRATION MASS

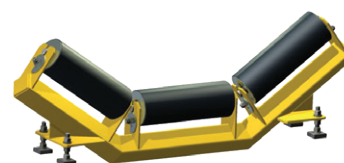
- + Lever or gearbox operated for ease of use (mechanical advantage system)
- + 100% of full scale design load (International Best Practice)
- + Highly accurate, fast and simple calibration check
- + Significant OH&S benefits - avoids back and finger injuries
- + Retrofit available for all makes of belt weighers



MODEL WQI-AP*

WEIGH QUALITY IDLER WITH ADJUSTABLE PROFILE

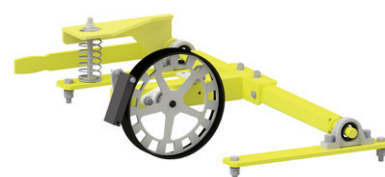
- + Purpose built weigh quality idler frames
- + Rigid construction for low deflection
- + Idler alignment by CST designed SmartCam for precision and ease of adjustment and permanent setting on frame
- + Roll change without re-alignment
- + High wing idler clearance to stringers prevents material jamming which affects weigher accuracy



MODEL PPC*

PRECISION PRECALIBRATED TACHOMETER

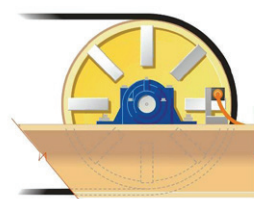
- + Spring loaded to drive on underside of carry belt
- + 1m circumference
- + Self cleaning
- + Large diameter for long accuracy life



MODEL BTS*

BASIC TAIL PULLEY TACHOMETER

- + Inductive Proximity sensor mounted at existing pulley
- + Use large diameter non slip pulley
- + Industry standard proximity sensor
- + Welded Steel Targets can be supplied



* Other options available

CONTROL SYSTEMS TECHNOLOGY

SYDNEY

47 Fitzpatrick St
Revesby NSW 2212
Australia

T: +61 2 8708 0200
F: +61 2 8708 0280

PERTH

Level 3
20/30 Hasler Road
Osborne Park WA 6017
Australia

T: +61 8 9485 1205
F: +61 8 9485 1206

QUEENSLAND

7 Success Street
Paget QLD 4740

T: +61 7 4952 1580
F: +61 7 4952 4608

HUNTER VALLEY

M: 0409 963 470

SERVICES AUSTRALIA WIDE

T: 1300 784 449

Control Systems Technology Pty Ltd service all brands of belt weighers at sites all over Australia and overseas.

Well trained technicians provide thorough recalibrations, trade verifications, audits and repairs to ensure equipment is performing as it should and to confirm the results are accurate.