



KeyCall[®] Fire

Semi Flush



The Key Operated Fire Alarm Call Point



The KeyCall[®] Fire 'Semi Flush' variant enables existing existing call points to be changed to KeyCall[®] without the need for any builders attendances.

Compatible with a range of Conventional and Addressable Fire Alarm Systems.

Applications include:

- Prisons
- Mental Healthcare
- Special Educational Needs (SEN) Schools

KeyCall[®] ensures you always have the key!

KeyCall[®] can be built to use the same key that opens your doors ensuring that you always have the key to operate your Access Control and/or Fire Alarm System.



 Transforming Life & Property Protection through Innovation

Telephone: 024 7775 2170 E-mail: sales@leadingedgeproductsco.uk Website: leadingedgeproductsco.uk

 Avansys
LLP

Leading Edge Products is a trade mark of Avansys LLP
Registered in UK No OC384483



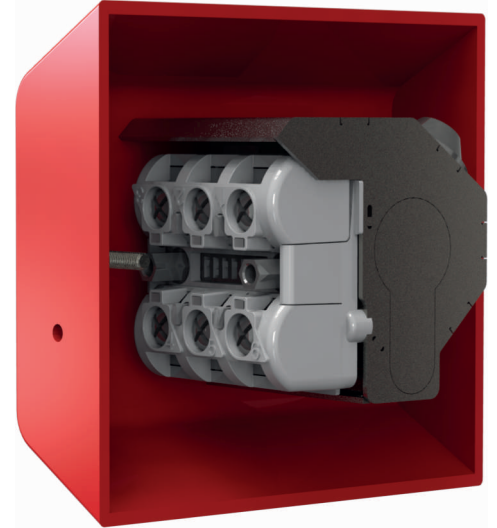
KeyCall[®] Fire

Semi Flush



Features the following:

- Compatible with "EuroProfile" style cylinder. Typically suited/keyed-alike cylinders are fitted so that authorised persons can operate the Fire Alarm System, using the same key as used for area door locks.
- Patent-pending Key 'Click-latch' mechanism ensures correct key position to activate Fire Alarm System.
- Robust all metal construction.
- Anti-ligature surface mounting design.
- Neat minimalistic one piece construction.
- Red fire indicator illuminates when KeyCall[®] is activated.
- Compatible with most common protocols of Fire Alarm System.
- Compatible with range of Conventional and Addressable Fire Alarm Systems
- Mounts on 35mm depth standard Single Gang Knock Out Box



Rear View

ORDERING INFORMATION	
Product Part Nos	Description
KCSF/SMM	KeyCall [®] Fire Semi Flush surface mounting module
KC/IM/C470	KeyCall [®] interface module, 470 ohm conventional
KC/IM/SW	KeyCall interface module, sav-wire
KC/IM/XP95	KeyCall [®] interface module, XP95 protocol
KC/IM/H	KeyCall [®] interface module, Hochiki protocol
KC/ECA	KeyCall [®] Factory Cylinder assembly (Note. Assumes cylinder free-issued)
KC/SC/35	Torx style security screw, 35mm
KC/SC/45	Torx style security screw, 45mm

Additional Interface Modules are available for most ranges of Fire Alarm System, please enquire.

EuroProfile Cylinder Specification

KeyCall[®] accepts a 45mm EuroProfile Cylinder.

Compatible Cylinder Dimensions:

KeyCall[®] Dimensions

Front face - 86mm x 86mm
Depth - 47mm

Note. Mounts on standard 47mm depth one gang KO box for flush installation.

VISIT OUR WEBSITE

