

## Company Profile

Since its establishment, SonoScape has been committed to providing high quality medical equipment for the healthcare sector. SonoScape specialized in the development and production of diagnostic solutions. Through innovation SonoScape continues to not only improve the efficiency and accuracy of healthcare solutions, but also to increase a sense of comfort for the patient and clinician. Since 2002, the innovative technology of SonoScape has benefited millions of people and we are dedicated to continue providing more effective and accessible healthcare solutions to the world.

# SonoScape

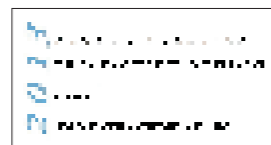
## Quote from Frost & Sullivan

FROST & SULLIVAN

"The Frost & Sullivan Award for Growth Leadership is presented to the company that has demonstrated excellence in capturing the highest annual compound growth rate for the last 3 years... The sales of ultrasound devices contribute an overwhelming proportion of total revenue, helping the company strengthen its leading position to outperform the competitors in the marketplace. With increasing penetration of mid-to high-end ultrasound devices, SonoScape is expected to see growth potential in the future..."

## Company Milestone

2002: Company founded in Shenzhen, China  
2003: Released SSI-1000: the 1st 15" Portable Color Doppler system in China  
2004: Released SSI-2000: the 1st PC platform Color Doppler system in China  
2005: Received the "High Technology Company" award from the PRC government  
2007: Received "CHINA TOP BRAND" award in the Medical Equipment Industry  
2007: Released the 1st Real time 4D ultrasound system in China  
2008: Received "European Entrepreneurial Company 2008" award from FROST & SULLIVAN  
2008: Received "Flagship Company" award in the Medical Equipment Industry in China  
2009: Received "Product Quality Leadership Award 2019" from FROST & SULLIVAN  
2011: Received the Reddot 2011 Product Design Award for S20 in Essen, Germany  
2013: Received "Ultrasound Market Growth Leadership Award, 2013" from FROST & SULLIVAN  
2014: Received the iF product design award 2014 for S9 in Munich, Germany  
2014: Received "Company of the Year in Ultrasound"  
2016: Received "Product Innovation in Electronic Endoscopy Market" from FROST & SULLIVAN  
2017: Received the iF product design award 2017 for X5 in Munich, Germany  
2017: Listed on Shenzhen Stock Exchange on April



ISO 13485

CE 0197

# SonoScape

SonoScape Medical Corp.  
2F, 12th Building, Shenzhen Software Park Phase II,  
Keji Middle 2nd Road, Nanshan District,  
Shenzhen, China  
Tel: +86-755-26722890 Fax: +86-755-26722850  
Email: market@sonoscape.net www.sonoscape.com



# S8EXP

U-S8EXP20190611

Caring for Life through Innovation



## Agile and Versatile

True nobility is in being superior to any in its class. Constantly improving technologies and services to help deliver better patient care, SonoScape's passion for innovation makes it a natural fit for today's market and the choice for tomorrow. With belief in leading the trend of ultrasound, inheriting and spreading classic and elegance, and through continuous effort, SonoScape releases a new model the S8Exp.

With an ultra-modern innovative design and clinically-proven technologies, the S8Exp is well equipped as a light weight, enhanced-image-quality ultrasound scanner, which not only provides optimized solutions for versatile applications, but helps to improve the user-experience for both routine and non-traditional challenges. Working with the S8Exp, will trigger your unlimited reverie and endow you with endless charm.



Carrying forward the classical design of SonoScape's portable ultrasound products, the S8Exp successfully combines the best ergonomics, attractive design and ease of use. This charismatic identity is also enhanced by a sophisticated color palette—with sedate grey as its interior paint color and pearl white as exterior cover, the S8Exp reveals a style of aristocrat and strong character among SonoScape's ultrasound systems.

- The rechargeable battery integrated within the system ensures the possibility of performing outdoor ultrasound
- Its compactness together with its lightweight enables you to take ultrasound excellence where fast responses are needed.
- The most important controls are well located within an intuitive interface, making all operations both easy and fast.
- Fifty degree foldable high resolution color LCD screen guarantees the most comfortable viewing location available in any environment.

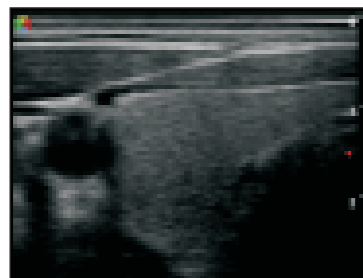


## Workflow

The S8Exp adapts to your workflow, whether you are in the consulting room, at the bedside, or at a remote location. With an easy-to-use new platform designed for sonographers' needs and full connection interfaces for easy connectivity and data sharing, S8Exp leads to an improved user comfort and clinical outcome as well as patient throughput and working efficiency.

# Powerful Platform

Embedded with SonoScape's core imaging technologies such as  $\mu$ -scan, PHI and Spatial Compound, the S8Exp boasts exceptional 2D image, sensitive spectral, Color and Power Doppler, displaying well-defined anatomy and pathology and facilitating a highly optimized diagnostic user environment for conclusive diagnoses. S8Exp also offers a comprehensive selection of electronic probes to maximize its capabilities to meet a wide range of applications including abdomen, pediatric, OB/GYN, cardiovascular, musculoskeletal, etc. The advanced probe technologies also effectively enhances the image quality and confidence in reaching clinical diagnoses, even in difficult patients.



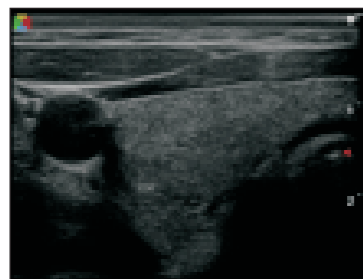
$\mu$ -scan Off



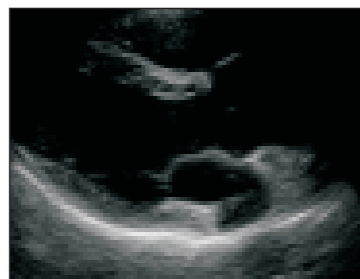
Pulse Inversion Harmonic Imaging Off



Spatial Compound Imaging Off



$\mu$ -scan On



Pulse Inversion Harmonic Imaging On



Spatial Compound Imaging On

