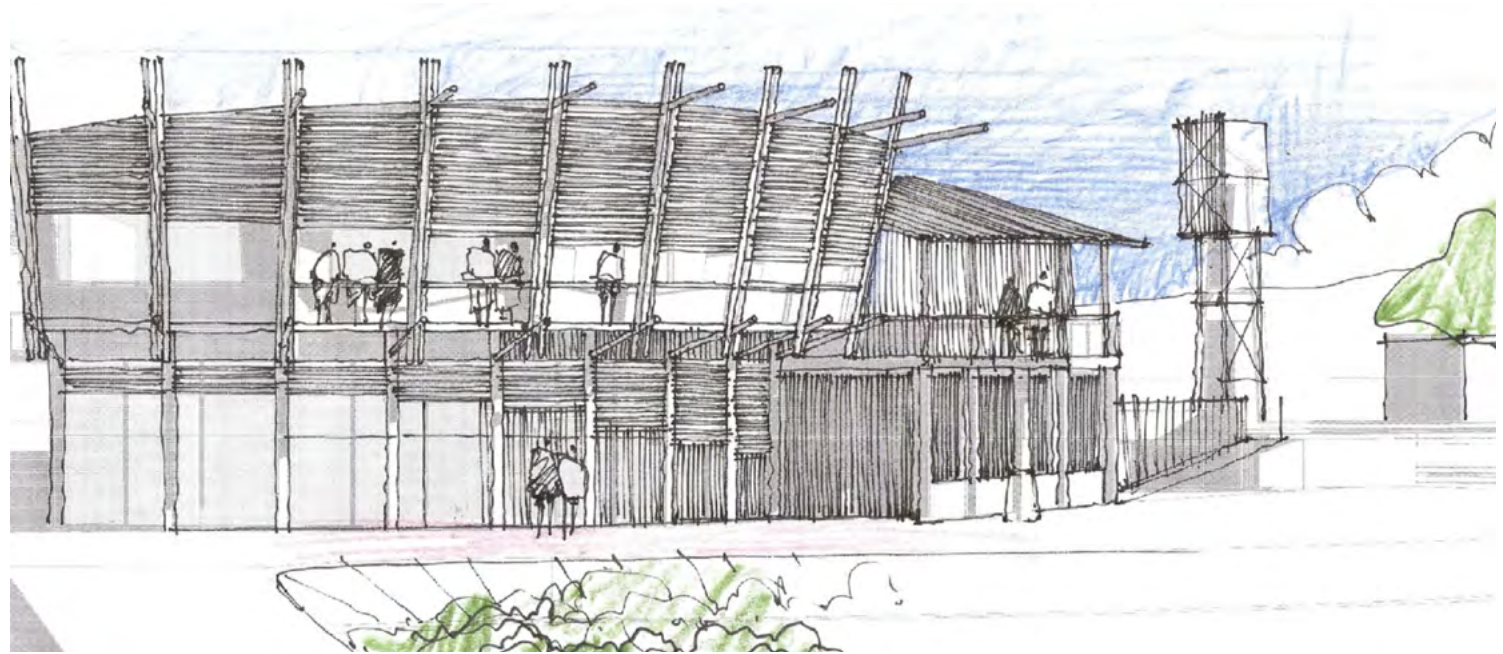


AFRICULTURE CENTRE

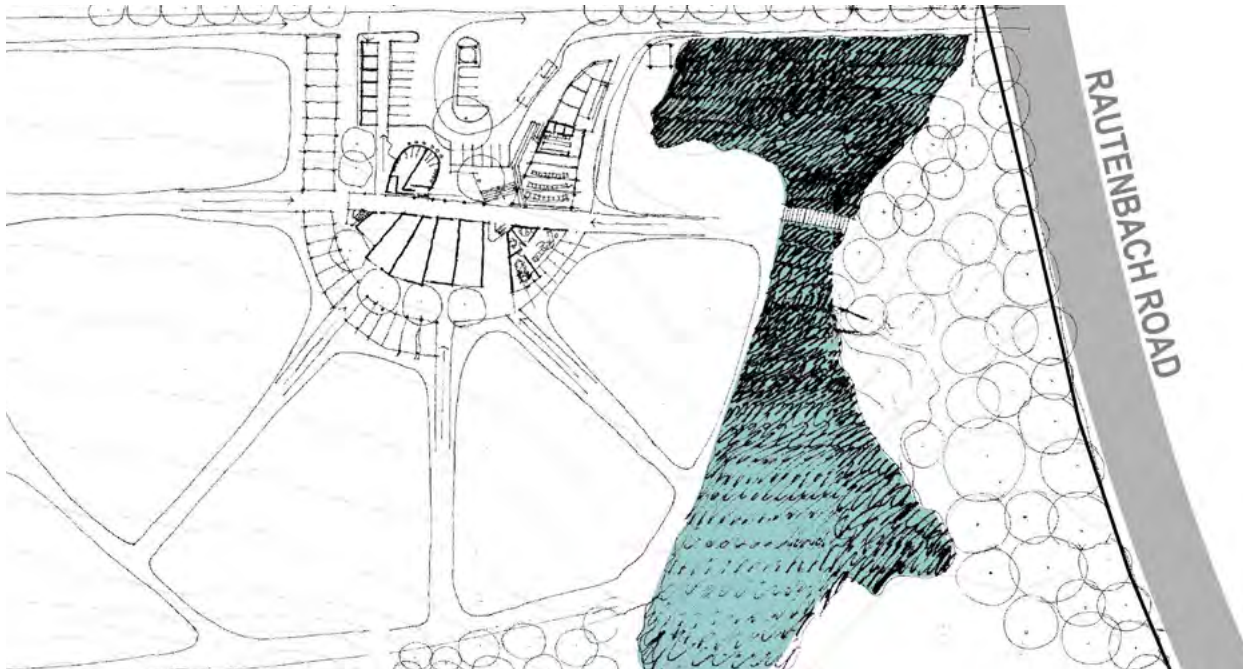
Grahamstown, Eastern Cape (2007)

A elevation sketch of the proposed centre

B site plan



A



B

This project flows from a joint conservation initiative between a UK based NGO called GARDEN AFRICA and a Grahamstown based one called UMTATHI (from the isiXhosa name for the Sneezewood Tree). We were appointed in 2007 to provide input.

The centre was proposed as a teaching/research/tourist facility to look into and publicise findings on the efficacy and commercial viability of traditional medicinal (umuthi) plants endemic to the Eastern Cape. This as a consequence of many of the local farms converting from domestic livestock to game leading to the inability of Nyangas (herbalists) to harvest from their traditional sources which in turn lead to the denudation of plants from accessible areas. The site, on the southern edge of Grahamstown turned out to be 'very wet' - the underlying soils were predominantly clay (Kaolin) - so an early decision was to 'nurture' the wetland by 'digging out' to create a water body/lake and creating a 'mound' with the excavated material for the buildings to 'sit' on. This allowed for the building to 'see and be seen' which was highly favourable for a teaching/tourist facility. The mound was surrounded by visible gardens arranged in the various biomes/plant types. The project stayed at the design level

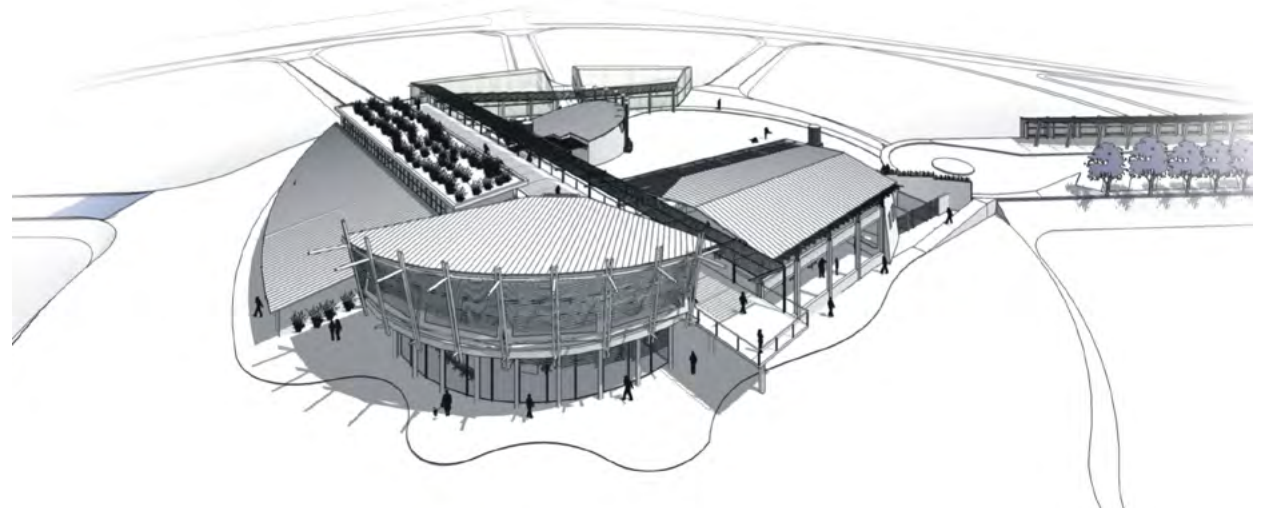
AFRICULTURE CENTRE

Grahamstown, Eastern Cape (2007)

A rendering of the proposed scheme

B elevation sketch

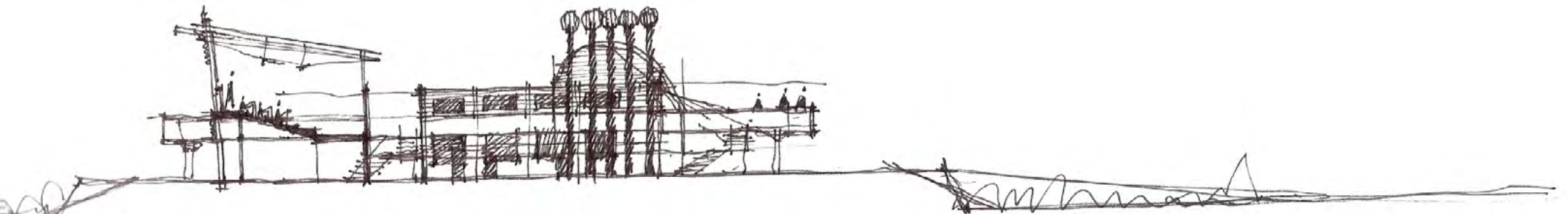
C section sketch



A



B



C

AFRICULTURE CENTRE

Grahamstown, Eastern Cape (2007)

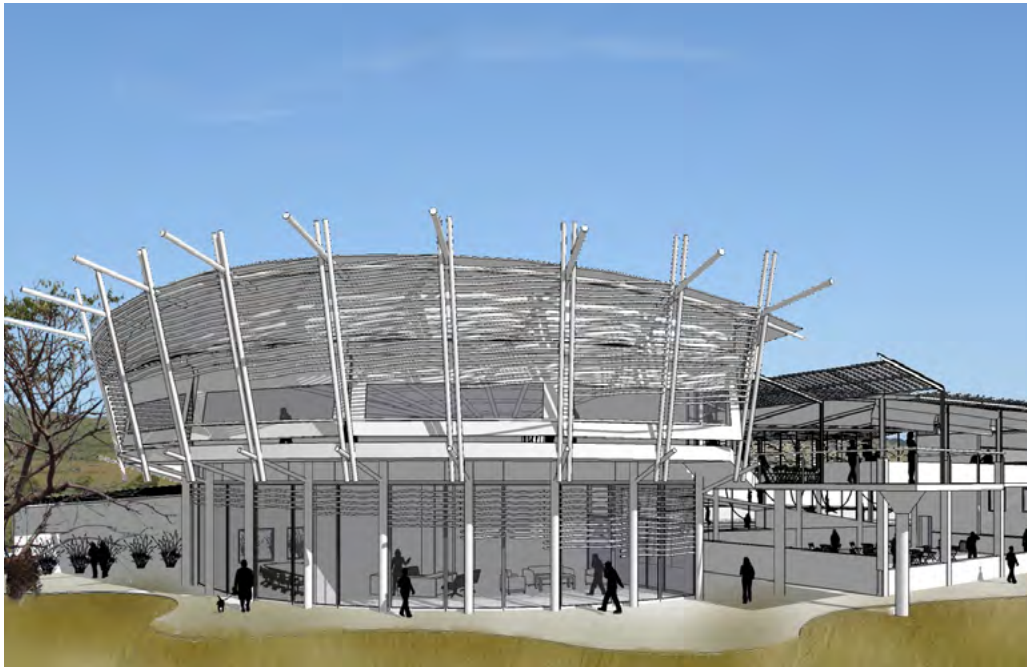
A rendering view of the internal view of the centre

B rendering elevation

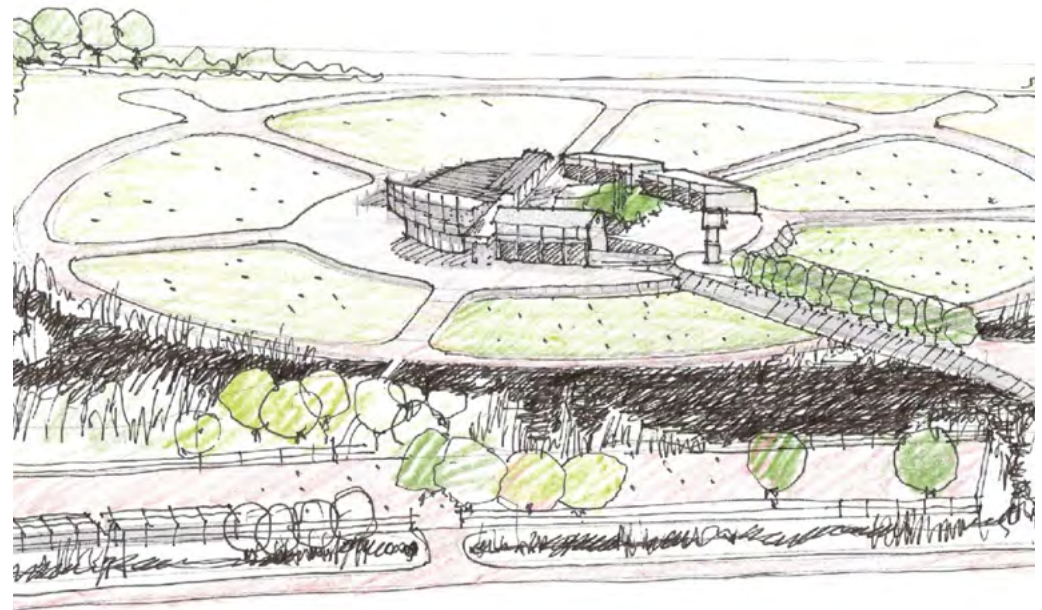
C overview plan sketch



A



B



C

AFRICULTURE CENTRE
Somkhele, KwaZulu-Natal (2007)

