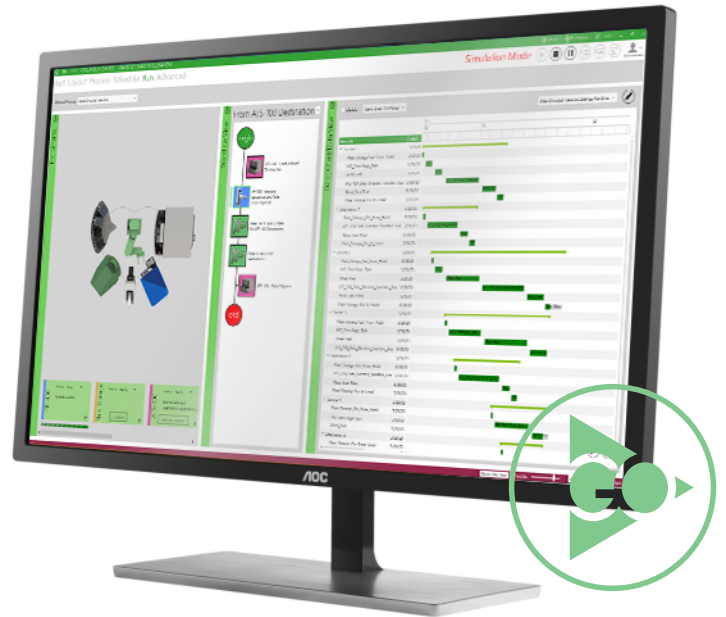


## GREEN BUTTON GO AUTOMATION SCHEDULING SOFTWARE: BASIC GBG TRAINING



### COURSE OVERVIEW

- Installing/Registering Green Button Go Automation Scheduling Software
- Installing/Updating Drivers
- Designing Layouts
- Creating Methods

### INTRODUCTION

Biosero offers basic one-day Green Button Go Automation Scheduling Software (GBG) training. It is designed to introduce you to Green Button Go.

Course empowers attendees in operating the software with hands-on training session from Biosero personnel. Classes are limited to a maximum of 10 students.

### BASIC GBG TRAINING

Basic GBG Training is one-day hands-on course

that introduces Green Button Go to the attendees to enable them to start running the automated workcell. Attendees learn how to install and set up software, execute layout changes, add new instruments, create methods, and run programs. The course will also cover introduction to basic trouble shooting and error handling. Completing this course will allow users to install and run methods in Green Button Go.

### WHO SHOULD ATTEND

Basic GBG Training is for anyone who has no prior experience with GBG and is responsible for operation, maintenance, and troubleshooting of their GBG driven automated workflows. Recommended prerequisites are installed workcell with GBG purchase.

## EXPECTED OUTCOME

On completion of this training, users will be able to start program, teach robot, modify layouts, add instruments, create and run programs, and manage the installation and deployment of GBG on new workcells.

## PROVIDED BY BIOSERO

- GBG Installation and Simulation License
- Example Methods

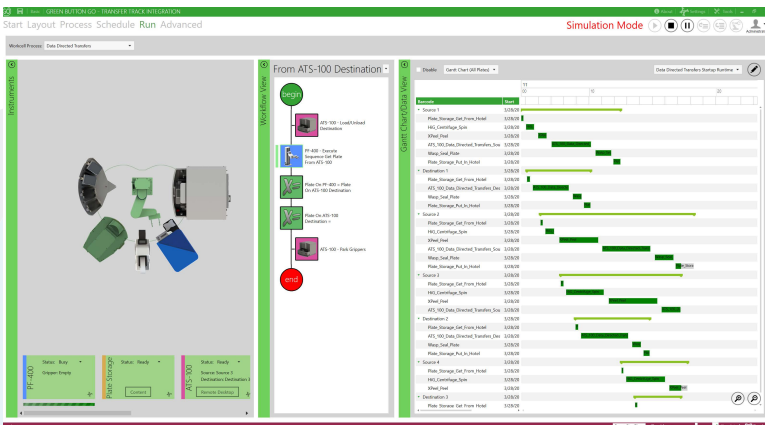
## REQUIRED BY ATTENDEES

- PC Laptop running Microsoft Windows 7 or higher
- Hotel and transportation to Biosero facility
- Lunch will be provided each day; attendees will be on their own in the evenings



## BASIC GBG TRAINING AGENDA

1. Installing/Registering GBG
2. Installing Drivers
3. Method Development
  - A. Layout Configuration
    - *Configuring Instruments & Storage*
    - *Robot Arm Setup*
    - *Advanced Robotic Arm Processes*
  - B. Processes
    - *Architecture (process to procedure)*
    - *Storage Management*
    - *Instrument vs Workflow Processes*
    - *Advanced Process Configuration*
  - C. Advanced Tab Operations
    - *Introduction*
4. Scheduling Scenarios
5. Simulation
6. Run Program
7. Runtime Troubleshooting
  - A. Error Handling
    - *Introduction*



9560 Waples Street • San Diego, CA 92121  
O: +1 858 880 7376 | F: 661 284 7583 | W: www.biosero.com

For more information about our GBG training courses visit [www.biosero.com/company/training](http://www.biosero.com/company/training) or contact us at [training@biosero.com](mailto:training@biosero.com)