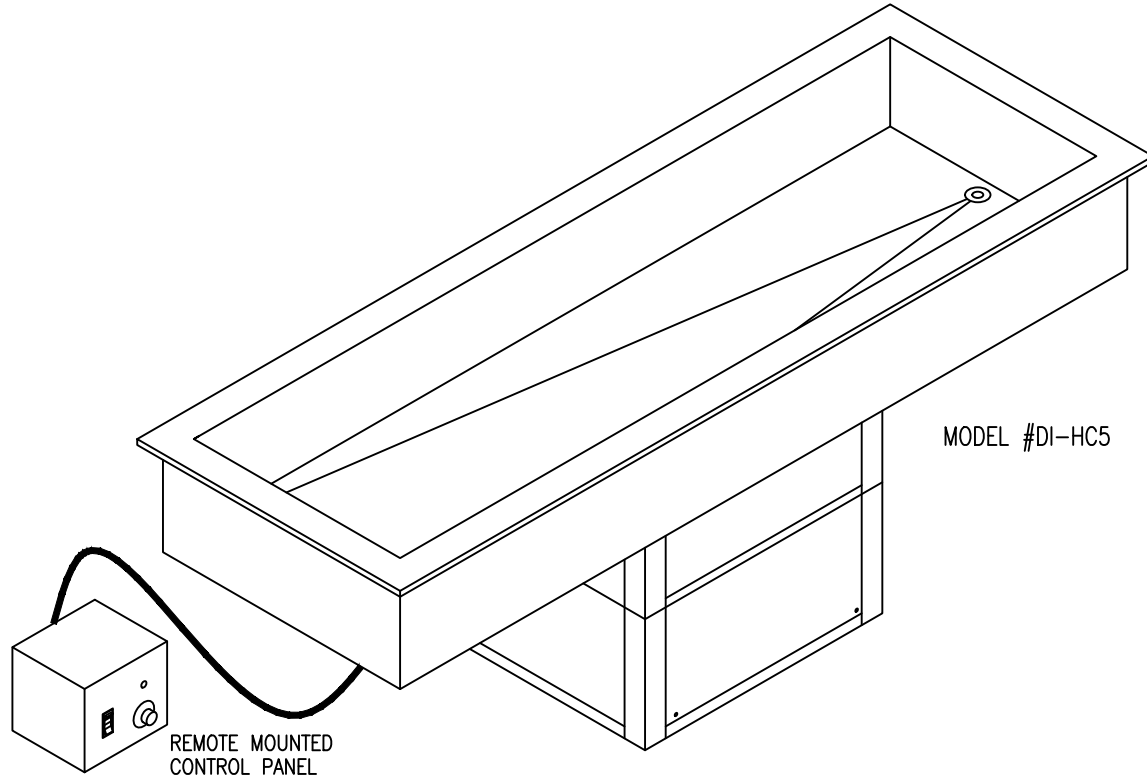


MOD-U-SERVE

DROP-IN HOT/COLD PAN REFRIGERATED



<u>MODEL</u>	<u>LENGTH</u>	<u>WELLS</u>	<u>HP</u>	<u>WATTS</u>	<u>VOLTS</u>	<u>PHASE</u>	<u>AMPS</u>	<u>CORD/CAP</u>
DI-HC2	30"	2	1/4	2000	120/208	1	9.6	NEMA L14-20P
DI-HC3	44"	3	1/4	2000	120/208	1	9.6	NEMA L14-20P
DI-HC4	58"	4	1/4	3000	120/208	1	14.4	NEMA L14-20P
DI-HC5	72"	5	1/3	4000	120/208	1	19.2	NEMA L14-30P

STANDARD FEATURES

COLD PAN INTERIOR: 18 gauge stainless steel fully welded interior liner integral with top flange.
Bottom sloped to 1" stainless steel welded in drain with gate valve.

COLD PAN EXTERIOR: 18 gauge galvanized jacket over minimum 1" thick foam insulation.

REFRIGERATION: 5/16" copper side wall mounted coil with thermal mastic applied to increase surface area.
Self contained 404A condensing unit with receiver and expansion valve operation.

HEATING: Cal rod heater elements rated at 1000 watts each.

ELECTRICAL CONNECTION: 6' cord and plug set.

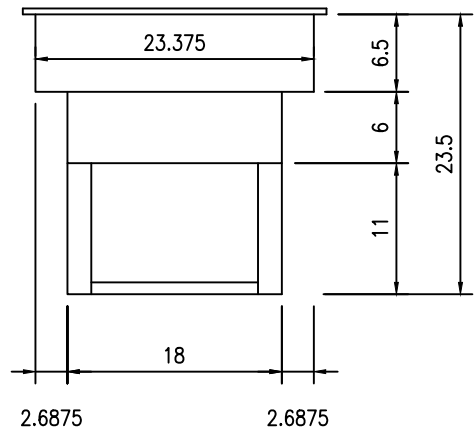
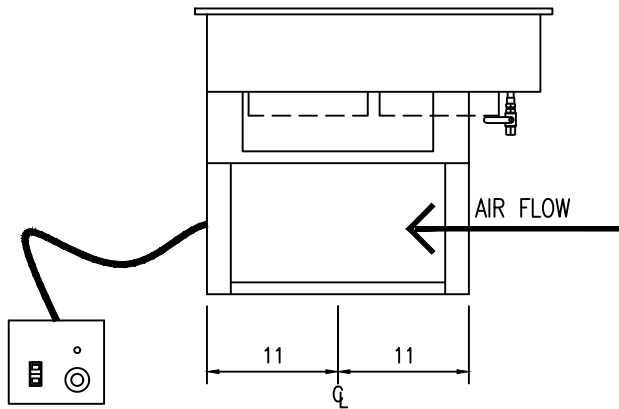
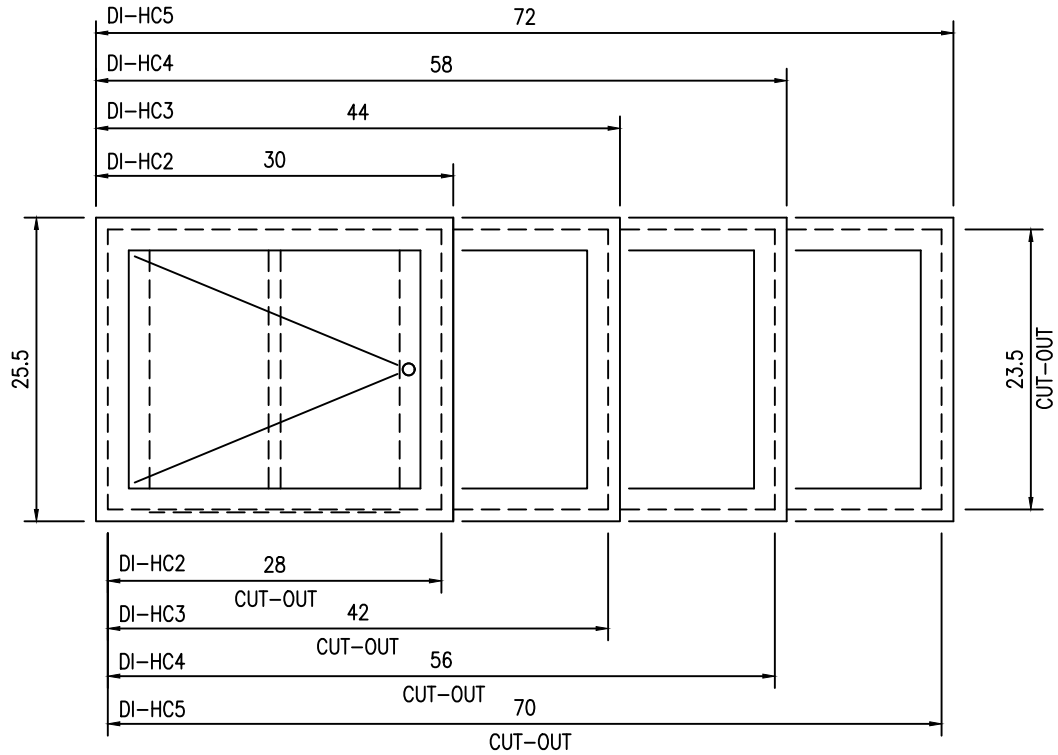
CONTROL PANEL: Common control panel with switch for or hot or cold operation.

OPTIONAL FEATURES

FALSE BOTTOM: 18 gauge stainless steel 1" high perforated sectional false bottom.

MOD-U-SERVE

DROP-IN HOT/COLD PAN REFRIGERATED



CONTROL PANEL
LOOSE FOR
FIELD MOUNTING

MODEL	LENGTH O.A.	WIDTH O.A.	INSIDE DIM.	CUT OUT DIM.
DI-HC2	30"	25.5"	24.5" X 20"	23.5" X 28"
DI-HC3	44"	25.5"	38.5" X 20"	23.5" X 42"
DI-HC4	58"	25.5"	52.5" X 20"	23.5" X 56"
DI-HC5	72"	25.5"	66.5" X 20"	23.5" X 70"