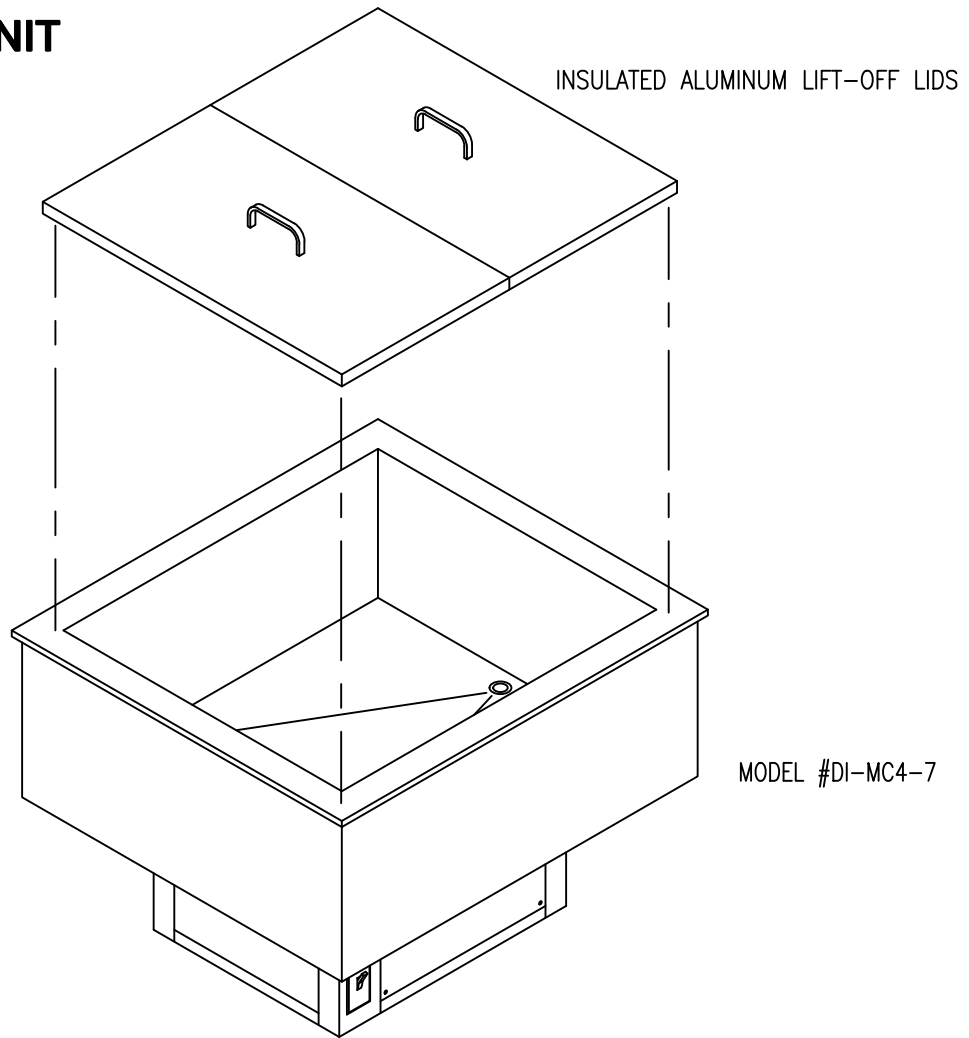


# MOD-U-SERVE

## DROP - IN MILK CRATE UNIT



<u>MODEL</u>	<u>LENGTH</u>	<u>WIDTH</u>	<u>HEIGHT</u>	<u>HP</u>	<u>VOLTS</u>	<u>PHASE</u>	<u>AMPS</u>
DI-MC4-7	35.5"	32.0"	14.0"	1/4	120	1	8.0
DI-MC6-7	50.0"	32.0"	14.0"	1/4	120	1	8.0

### STANDARD FEATURES

COLD PAN INTERIOR: 16 gauge stainless steel fully welded interior liner integral with top flange.  
Bottom sloped to 1" stainless steel welded in drain with gate valve.

COLD PAN EXTERIOR: 18 gauge galvanized jacket over minimum 1" thick foam insulation.

REFRIGERATION: 3/8" copper bottom mounted coil with thermal mastic applied to increase surface area.  
Self contained 1/4 hp condensing unit with receiver and expansion valve operation.

ELECTRICAL CONNECTION: 6' cord and plug set (NEMA-15).

THERMOMETER: Unit complete with digital thermostat/controller.

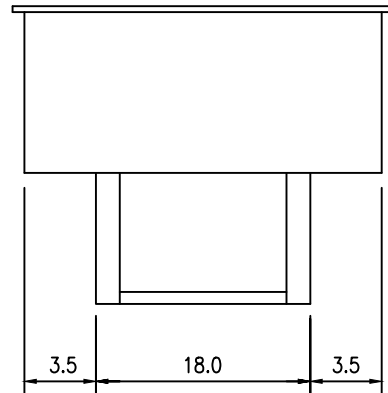
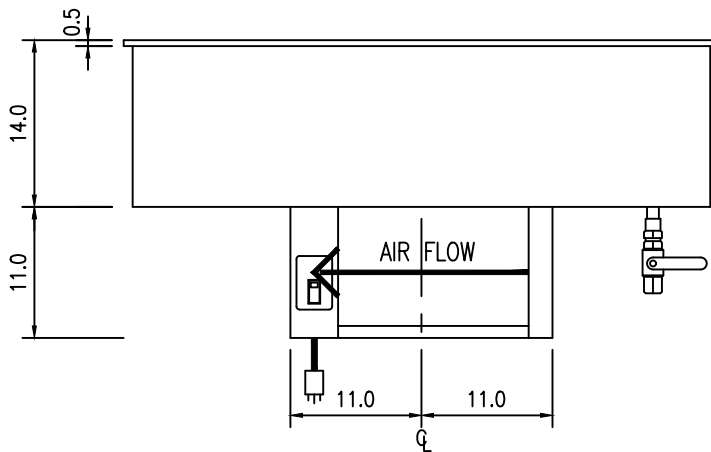
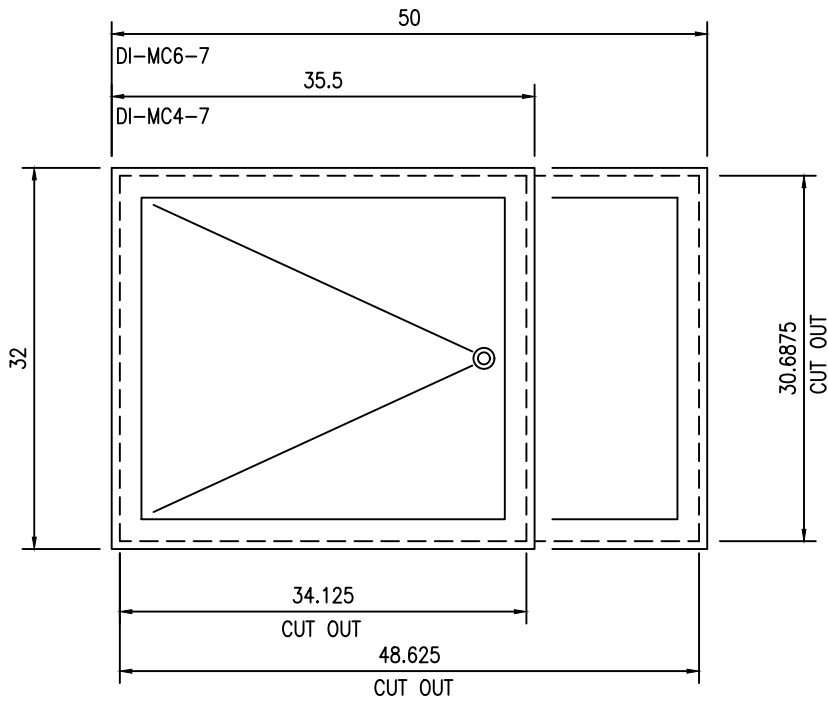
STAINLESS STEEL SPECIFICATION: All stainless steel to be type 304 with number 3 finish.

### OPTIONAL FEATURES

ON/OFF TOGGLE SWITCH: Factory mounted on/off lighted toggle switch.

# MOD-U-SERVE

## DROP - IN MILK CRATE UNIT



<u>MODEL</u>	<u>LENGTH O.A.</u>	<u>WIDTH O.A.</u>	<u>INSIDE DIM.</u>
DI-MC4-7	35.5"	32"	30.5" X 27"
DI-MC6-7	50"	32"	45" X 27"