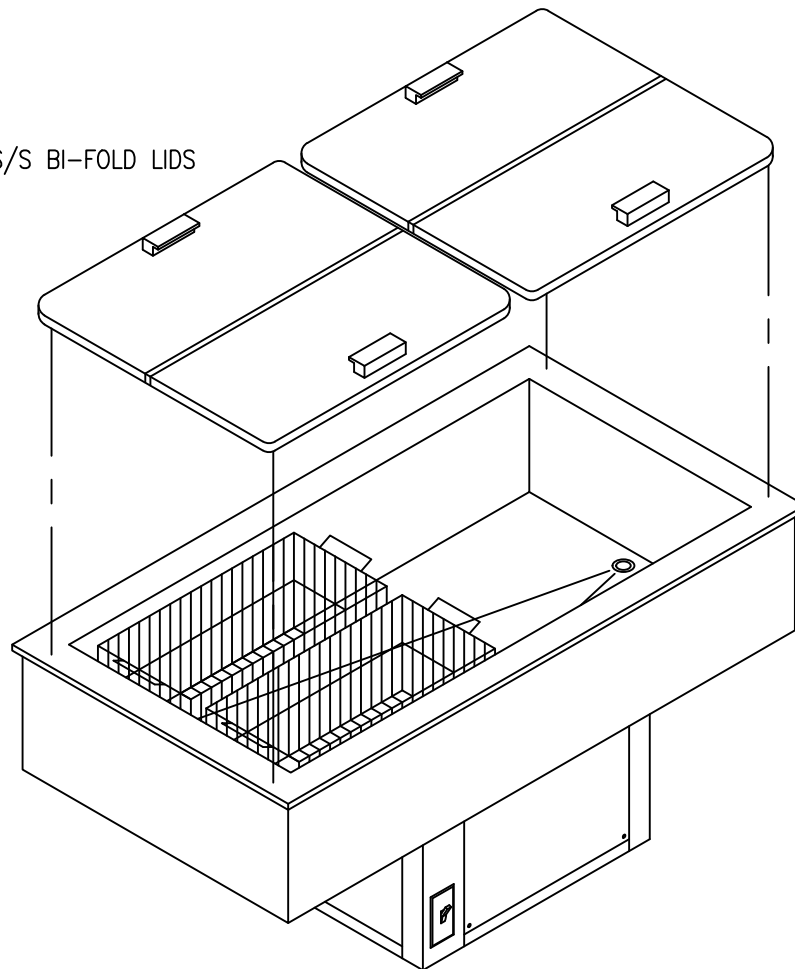


MOD-U-SERVE

DROP - IN MISC. BEVERAGE COOLER

INSULATED S/S BI-FOLD LIDS



MODEL #DI-BV2-S

<u>MODEL</u>	<u>LENGTH</u>	<u>WIDTH</u>	<u>HEIGHT</u>	<u>HP</u>	<u>VOLTS</u>	<u>PHASE</u>	<u>AMPS</u>
DI-BV1-S	26.75"	26.75"	11.0"	1/4	120	1	8.0
DI-BV2-S	50.125"	26.75"	11.0"	1/4	120	1	8.0
DI-BV3-S	73.25"	26.75"	11.0"	1/4	120	1	8.0

STANDARD FEATURES

BASKETS: (2) Removable S/S wire baskets for misc. beverage products to be provided with each unit.

CONSTRUCTION: 18 GA S/S interior with 1" S/S drain in bottom. 18 GA. galvanized exterior over 1 1/2" thick high pressure foam insulation. Bakelight breaker strip attachment of interior and exterior panels.

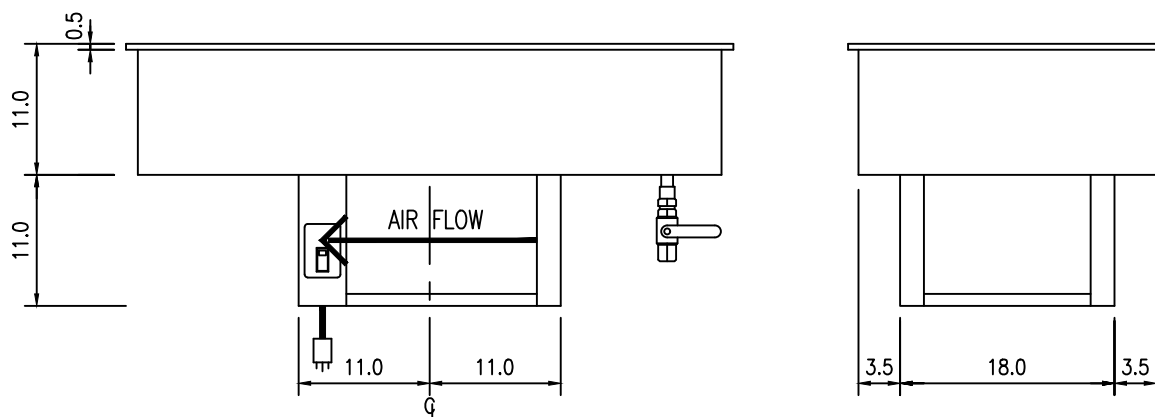
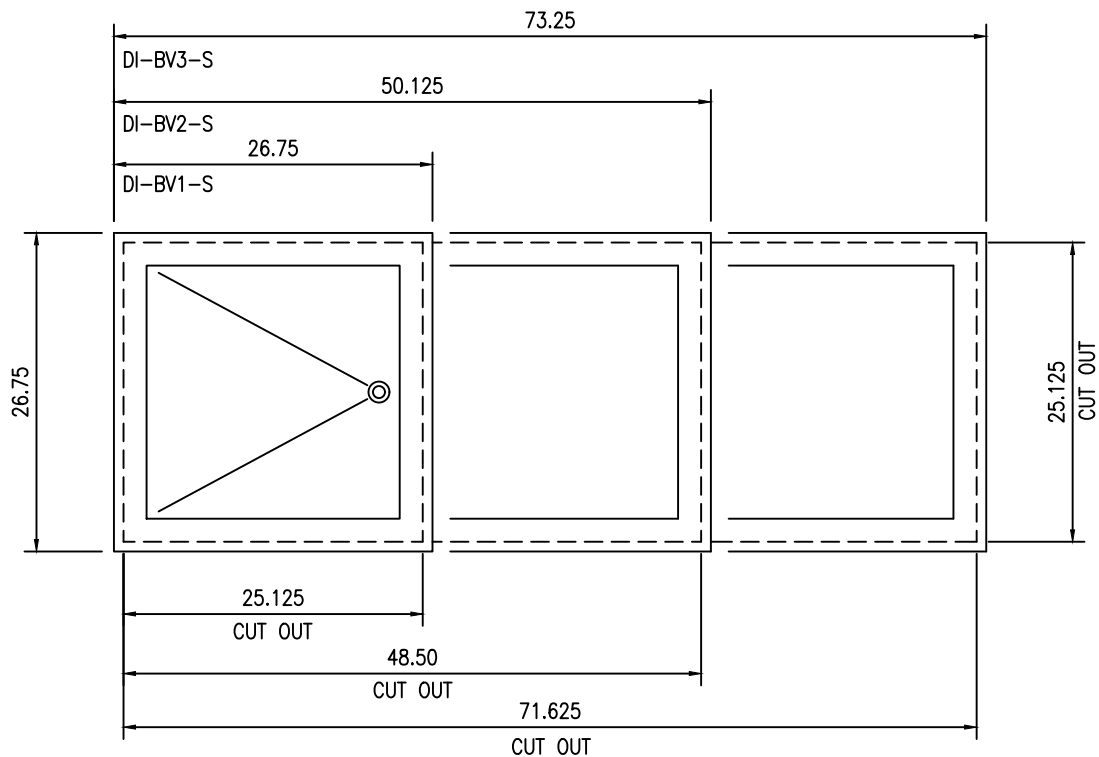
REFRIGERATION: 3/8" copper side wall mounted coil with thermal mastic applied to increase surface area. (1) self contained condensing unit with receiver and expansion valve operation.

THERMOMETER: Unit complete with digital thermostat/controller.

STAINLESS STEEL SPECIFICATION: All stainless steel to be type 304 with number 3 finish.

MOD-U-SERVE

DROP - IN MISC. BEVERAGE COOLER



MODEL	LENGTH O.A.	WIDTH O.A.	INSIDE DIM.	TOP OPENING
DI-BV1-S	26.75"	26.75"	21.25" X 21.25"	25.125" X 25.125"
DI-BV2-S	50.125"	26.75"	44.625" X 21.25"	48.5" X 25.125"
DI-BV3-S	73.25"	26.75"	67.75" X 21.25"	71.625" X 22.125"