

Air Systems

Service and Installation Manual

Introduction	2
Installation/Care	3
Hood Diagrams	4
Parts List	5
Warranty	6

For Service Information, call 1-888-955-5463

Please provide following information:

- Model number
- Serial number
- Part Description and number as shown in parts list.

Installation

- **Receiving:**

Inspect for damage upon arrival. If there is any visible damage upon arrival note such on bill of lading before signing as received. If there is any concealed damage call the transporting agent at once and advise them of the damage. Request an immediate inspection. This is for your protection in settling damage claims.

- **Location:**

Be sure that the location has a wall and overhead strong enough to support the total load of the exhaust hood. Look for overhead obstructions that will hamper installing the hood at the correct height. Make sure there is adequate room and access for duct and electrical connections.

- **Leveling:**

Exhaust hoods should be as level as possible to ensure operation and fit.

Care and Cleaning

- **Cleaning:**

Stainless steel should be cleaned with mild soap and warm water. Always rub with the “grain” of the stainless steel to avoid marring the finish. Do not use an abrasive cleaner as it will scratch the stainless steel.

- **Filters:**

All filters are removable and are recommended for a daily cleaning. These can be cleaned by placing them in a commercial dishwasher or by hand with mild soap and hot water. The grease trough and grease cups should also be wiped out and cleaned daily.

- **Hood Body:**

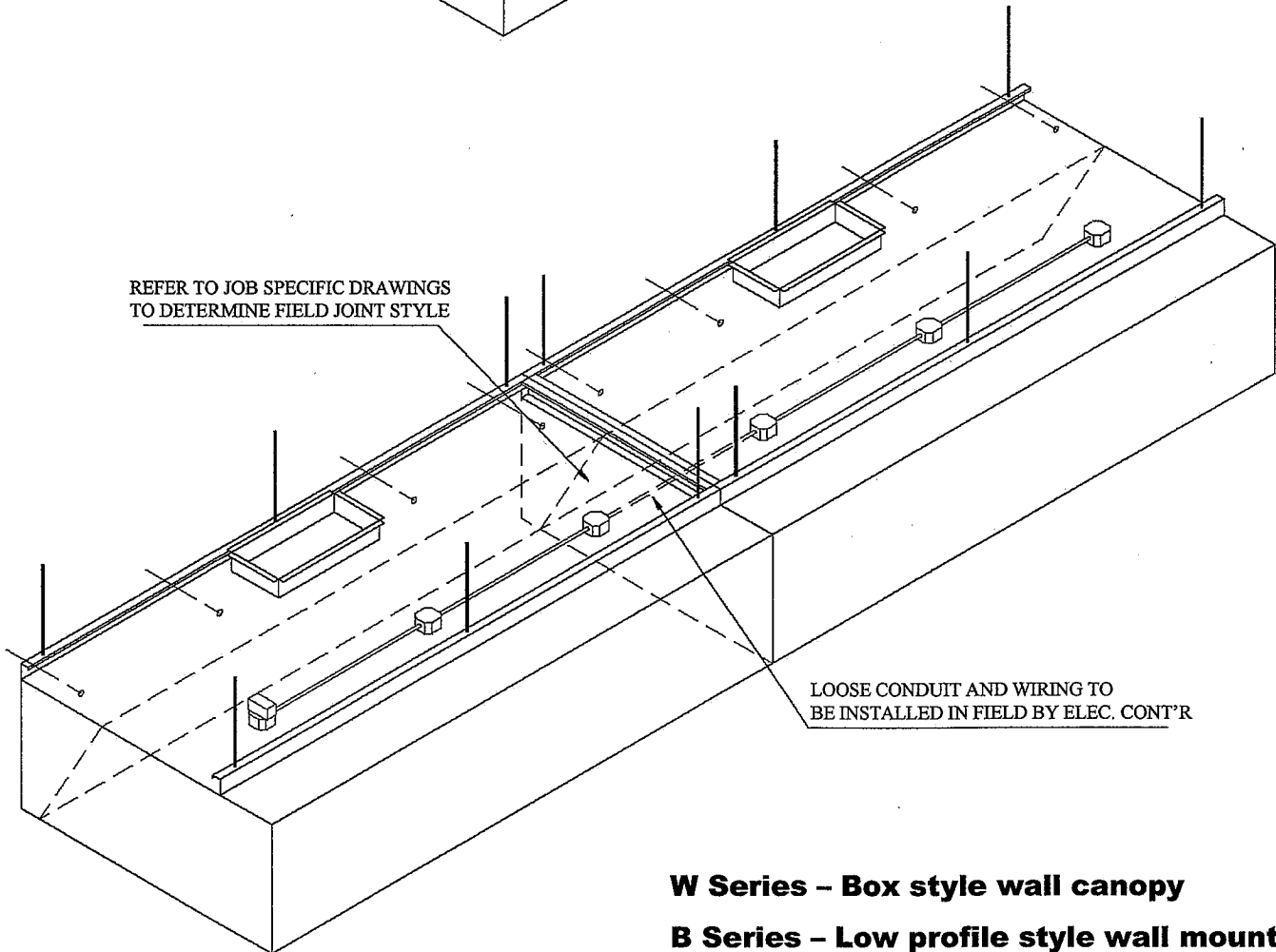
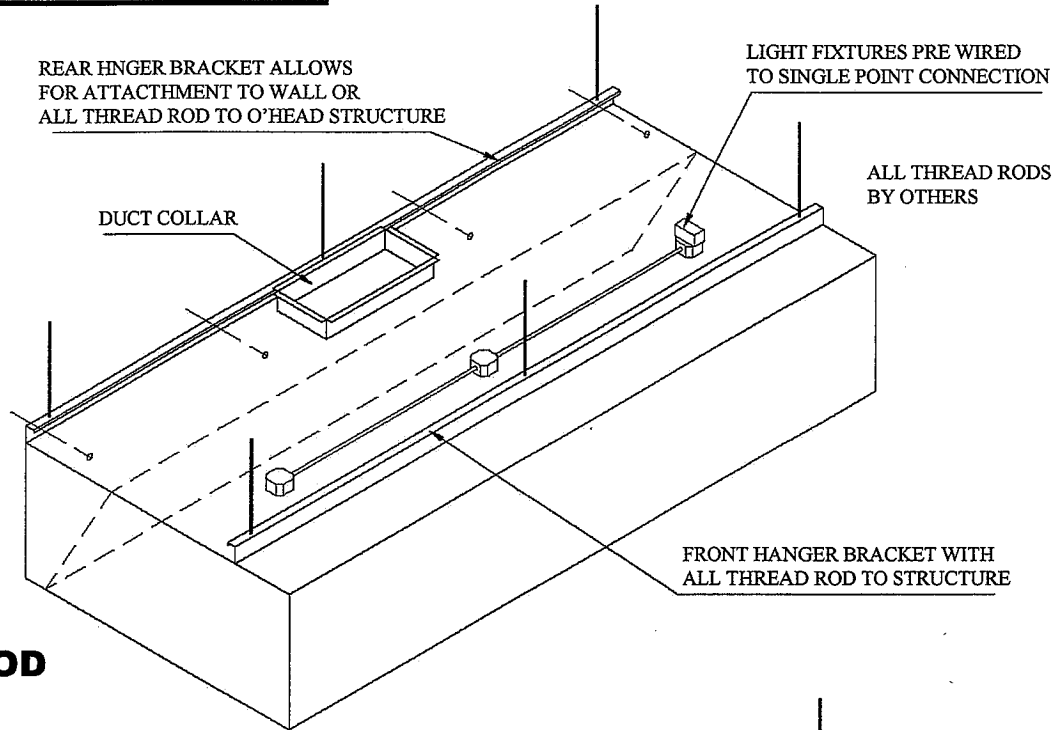
Periodically check components such as fire dampers, and fusible links for operation. Excessive grease build up in the hood may require the use of a professional hood cleaning service.

Fire Suppression Systems

- **Requirements:**

Depending on the type of cooking equipment used, an independent fire suspension system will be required. In the event of a fire the system will provide surface and duct protection and will shut off gas and electrical supplies to the cooking equipment. Check with your local authorities for regulations.

HOOD INSTALLATION



W Series – Box style wall canopy

B Series – Low profile style wall mount

I Series – V-Bank style island mount

Parts List

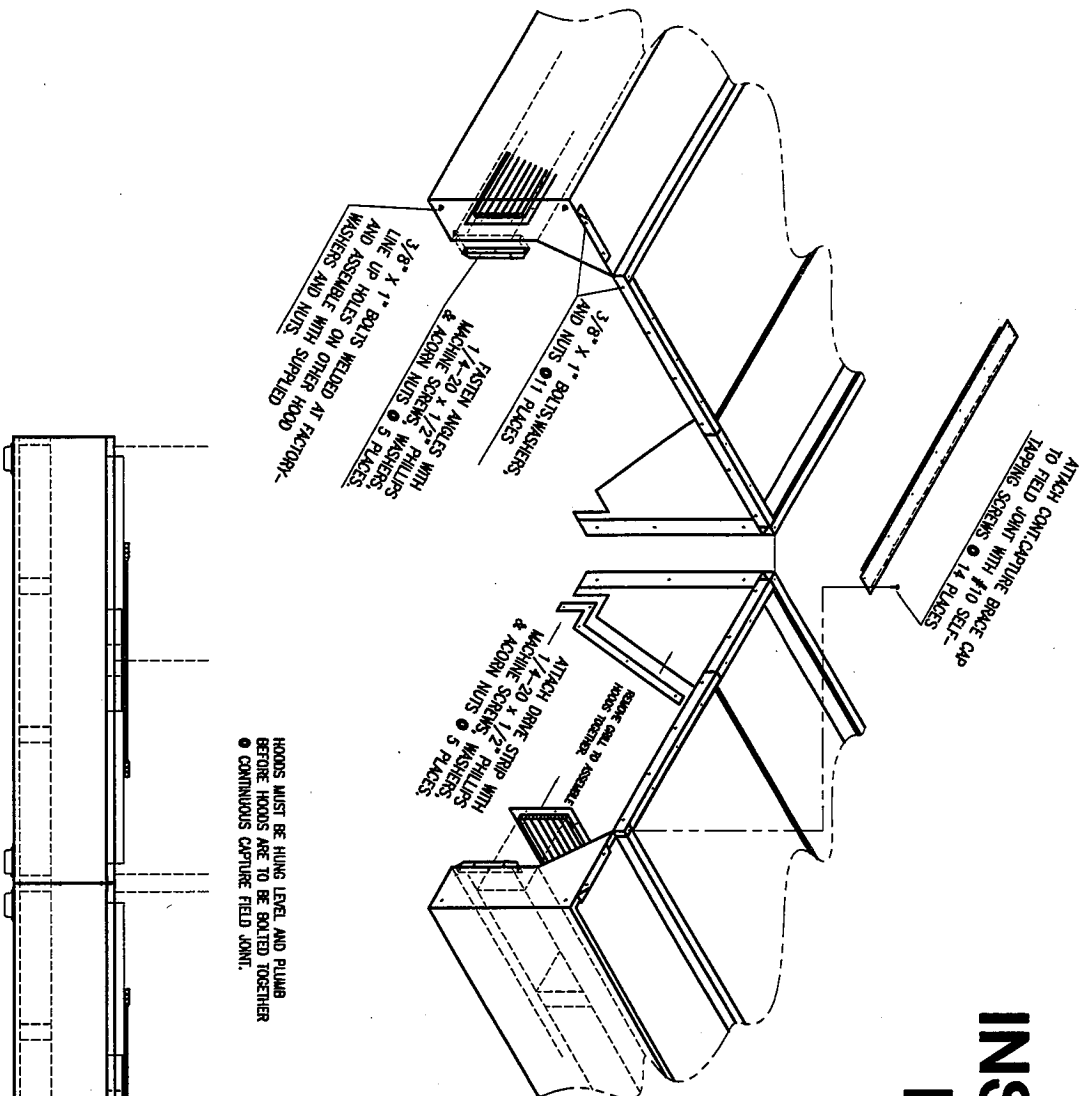
AS-5001	Fusible link for exhaust damper (275')
AS-5002	Fusible link for supply air damper (275')
AS-5003	Removable grease cup
AS-5004	S/S removable grease filter (16" high 16" wide)
AS-5005	S/S removable grease filter (16" high 20" wide)
AS-5006	S/S removable grease filter (16" high 25" wide)
AS-5007	Bullet type vaporproof light fixture complete
AS-5008	Bullet type vaporproof light fixture globe only
AS-5009	Bullet type vaporproof light fixture wire guard
AS-5010	Recessed incandescent light fixture complete (12" x 12")
AS-5011	Recessed fluorescent light fixture complete (36")
AS-5012	Recessed fluorescent light fixture complete (48")



Air Systems



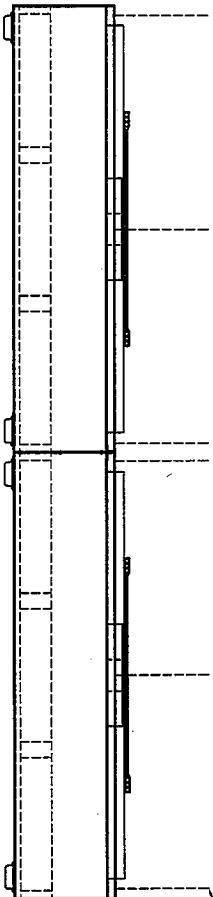
INSTALLER NOTE: BOLT DETAIL



- * INSTALLATION HARDWARE PACKAGE TO INCLUDE:
- 11 EACH - 3/8" X 1" LONG HEX HEAD BOLTS
 - 11 EACH - 3/8" FLAT WASHERS
 - 14 EACH - 3/8" SPLIT WASHERS
 - 14 EACH - 3/8" HEX HEAD NUTS
 - 7 EACH - 1/4" LOCK WASHER S/S
 - 7 EACH - 1/4-20 X 1/2" LONG PHILLIPS S/S MACHINE SCREWS
 - 7 EACH - 1/4-20 S/S FLAT WASHERS
 - 7 EACH - 1/4-20 S/S ACORN NUTS
 - 14 EACH - #10 S/S SELF-TAPPING SCREWS


HOODS MUST BE HUNG LEVEL AND PLUMB BEFORE HOODS ARE TO BE BOLTED TOGETHER
 @ CONTINUOUS CAPTURE FIELD JOINT.

* HOODS UP TO 8'-0" REQUIRE 4 HANGER ROOS
 ** HOODS OVER 8'-0" REQUIRE 6 HANGER ROOS




**W-IM
C/CAPTURE
HD INSTALL**

MOD-U-SERVE



Air Systems



2320 PECTON ROAD
HOUSTON, TEXAS 77032
281 442 8001

DRAWING / W-IM HD INSTALL	SHEET 1	DRAWN BY RR	CHECKED BY	DATE 6.29.2009	of 1 SHEETS
<p>MOD-U-SERVE</p> <p>NO. DATE REVISION BY</p>					

BOLT PACKAGE FOR CONTINUOUS CAPTURE JOINT

GRADE #8 – 3/8" X 1" BOLT - 14

GRADE #8 – 3/8" FLAT WASHER – 14

GRADE #8 – LOCK WASHER – 14

GRADE #8 3/8" NUT – 14

#10 SELF TAPPING SCREW S/S- 14

1/4" X 1/2" S/S PHILLIPS M.S – 7

1/4" S/S FLAT WASHER -7

1/4" S/S LOCK WASHER – 7

1/4" S/S ACORN NUT - 7

MOD-U-SERVE Warranty

The warranties cover the following MOD-U-SERVE equipment products:

- Milk Cooler Products
- Beverage Cooler Products
- Hot/Cold Food Counter Products
- Milk/Ice Cream Counter
- Flat Top and Cashier Counters
- Modular Utility Systems
- MOD-U-SERVE Air Systems

Note: *When a buyout piece of equipment is provided in the MOD-U-SERVE product line the OEM warranty applies.*

Limited Warranty

MOD-U-SERVE warrants to the original purchaser the MOD-U-SERVE unit sold and all parts thereof to be free from defects in material or workmanship, under normal use and service, for a period of one year from date of registration, or fifteen months from date of shipment, whichever is earlier.

Our obligation under this warranty shall be limited to repairing or replacing F.O.B factory of such product which proves thus defective and which under our examination shall disclose to our satisfaction to be defective.

- a. Any part returned to the company under the terms of this warranty must be accompanied by a record of the cabinet model, series number, and return authorization number, and such shall be on the basis of TRANSPORTATION CHARGES PREPAID.
- b. Improper operation due to low voltage conditions, inadequate wiring, and accidental damage are not manufacturing defects and are strictly the responsibility of the purchaser.
- c. Condenser coils must be cleaned at regular intervals. Failure to do so may cause compress malfunction, and will void warranty.
- d. This warranty does not apply to loss of food, or other products, or damage to property due to mechanical or electrical malfunction.

Five Year Compressor Body Warranty

In addition to the warranty set forth above, MOD-U-SERVE warrants the hermetically sealed compressor body for an additional four years, not to exceed sixty months from date of shipment from date our plant, provided, upon receipt of the compressor, manufacturer examination shows the sealed compressor to be defective. This extended warranty does not apply to any electrical controls, condenser, evaporator, fan motors, overload switch, starting relay, temperature control, dryer, accumulator, or wiring harnesses, which items are covered by the standard warranty. No claims can be made against the warranty for loss of product.

These warranties are in lieu of all warranties, expressed or implied, and of all other obligations or liabilities on our part, and we neither assume nor authorize any other person to assume for us any obligation or liability in connection with the sale of said units or any other part thereof. This warranty shall not be assigned and shall be honored only in so far as the original purchaser.