

**The Ameena Group Ltd**

Suite 313

28 Old Brompton Road

London SW7 3SS

t: +44 (0)788 192 7267

w: [theameenagroup.com](http://theameenagroup.com)

## Bessborough House, Battersea Power Station, London SW11

£6,000,000 Leasehold



- 4 Bedrooms • 3 Bathrooms • 2,738 sqft/ 254.4 sqm • Duplex Townhouse • 1 Large Terrace • 2 Winter Gardens •
- Furnished • Bespoke Marble Breakfast Bar • 24 hr Concierge • Gym • Business Suite • 990 + Year Lease •
- On Site Amenities • Underground Parking •

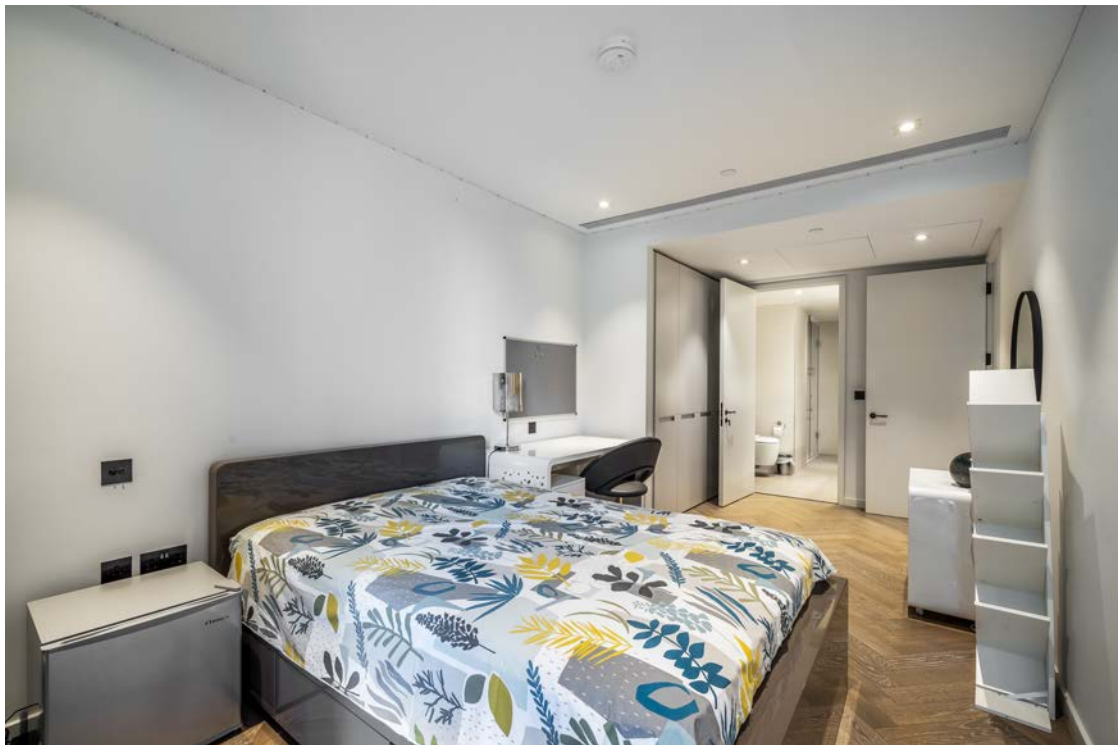
A truly rare gem, this 4 bedroom duplex apartment is spread across a spacious 2,738 sqft. With uninterrupted views of the river, there are very few apartments in London that could boast such a feat. Finished to the highest specifications, you will not find a more desirable river facing apartment.

Battersea Power Station is considered the most exciting and iconic new build developments in London. The development is located a 5 minute walk away from the impressive Chelsea Bridge and evergreen Battersea Park. Centrally located, there is also a new tube station to open in the development in 2021.















# Bessborough House, SW11

Approximate Gross Internal Area = 254.4 sq m / 2738 sq ft

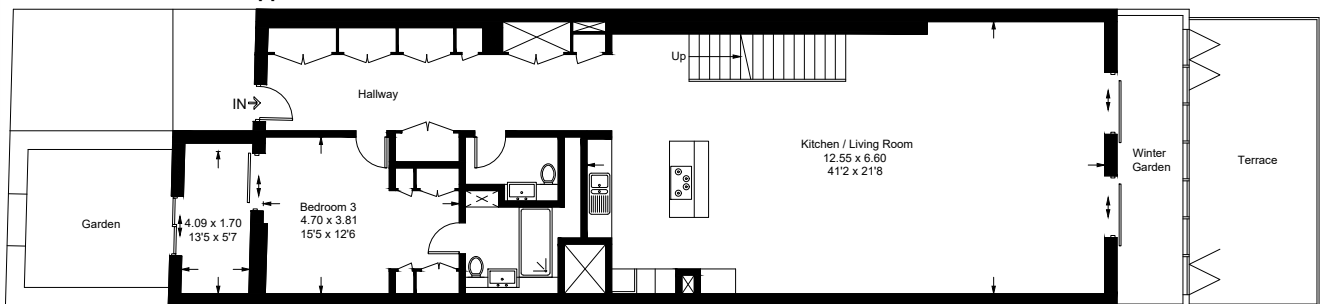
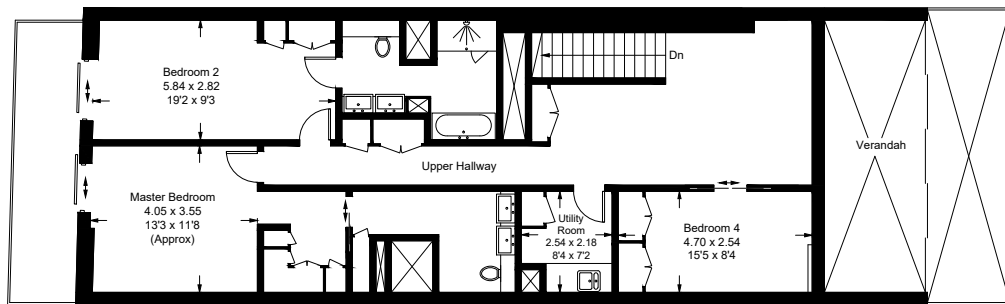


Illustration for identification purposes only, measurements are approximate, not to scale. (ID680392)



For more information call on

+44 (0) 20 3773 5759

or email at

[ac@theameenagroup.com](mailto:ac@theameenagroup.com)

We're members of the

