



STANDARD RED
FINISH WITH SPECIAL
ROSETTE FLYWHEEL
(ADDITIONAL CHARGE)

Volano

HAND OPERATED SLICERS

The Volano is a state of the art hand flywheel slicer that will compliment any catering facility, hotel, restaurant or deli.

The Volano is fully mechanical which means it can still be used in the event of a power cut. This stylish meat slicer is made of very robust construction, the body is aluminium and the parts are all stainless steel. The Volano is available in 184 different colours so that it can coordinate with your interior design.

Standard (free of charge) paint colours are:

- Red - RAL 3003 (+ a bit darker - special colour mix)
- Black - RAL 9005
- Cream - RAL 1013 + 1015 (special colour mix)

All other colours POA

Hand built
in Italy.



linda-lewis.co.uk

llk

Specifications

HAND OPERATED SLICERS

Model	Blade Size	W	D	H	Cut Thickness	Cut Length/Height	Weight
LLK250VOL	10" - 250mm	680	520	510	0 - 20mm	185 x 150	33kg
LLK300VOL	12" - 300mm	720	600	740	0 - 20mm	230 x 190	45.5kg
LLK350VOL	14" - 350mm	870	710	800	0 - 25mm	270 x 240	81kg

PEDESTALS

Model	W	D	H	Gross Weight
P250VOL	375	560	800	72kg
P300VOL	375	560	800	72kg
P350VOL	600	730	795	75kg

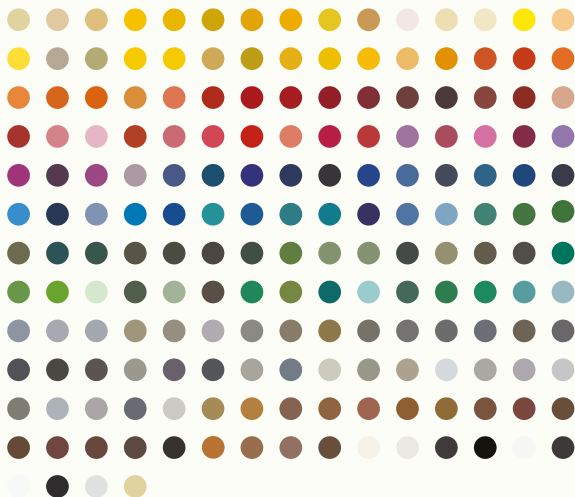


Key Features:

- Hand operated
- Stylish appearance
- Available in 184 colours
- Manufactured in Italy
- No electrical supply required
- Can be sold without pedestal
- Special wheel designs available as extra - POA

Colour Options:

The Volano is available in 184 different colours so that it can coordinate with your interior design.



BLACK FINISH WITH SOLID FLYWHEEL



PURPLE FINISH WITH FLOWER FLYWHEEL

No electrical supply required.



FAC products are supplied with 2 years parts and 1 year labour warranty.

linda-lewis.co.uk