

## User Guide

This User Guide applies to the use of Autec Power Systems NFC Programming Controller model # L2PROGMR used for programming the *Output Current/Output Voltage and Dimming Options* of the Autec L2WCP series of LED Drivers.

*Please contact Autec Sales for further information about our complete line of programmable LED Driver models and available programmable options.*

### Programming your Autec Power Systems **L2WCP SERIES** **Near Field Communication** Programmable LED Driver

#### What is Needed:

- **L2WCP Series** LED Driver (Near Field Communication Programmable model)
- **L2PROGMR** (NFC Controller) with USB cable attached



Items shown are: L2WCP Series LED Driver model # L2WCP040S100PS and NFC Controller module part # L2PROGMR with USB cable (Standard 2.0 USB)

Steps continued on next page...

**Autec's L2PROGMR (NFC controller module) allows the user to perform the following functions:**

- CHOOSE and MODULATE the desired OUTPUT CURRENT and OUTPUT VOLTAGE (for specific models)
- SET TIMER DIMMING
- SET DIM-TO-OFF option

### **SETTING UP FOR PROGRAMMING THE LED DRIVER:**

Please note: When performing the LED Driver programming operation, the L2PROGMR controller module is powered by the USB cable which is plugged into the computer. Also, please note, **the LED Driver DOES NOT require any external power source** as the NFC protocol communication chip technology enables the programming function.

#### **1.0 Making the Connection:**

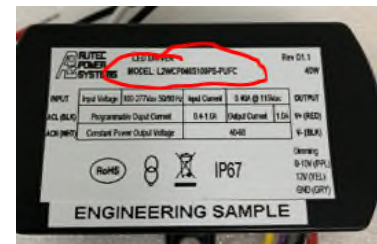
1.1 Connect the USB cable to the PC which is powered up.

1.2 When connected properly, the LCD display on the controller module will light up indicating the controller module is ready to use. If the controller module is not ready, check the cable connection and be sure the PC is powered up.



#### **2.0 Selecting the LED Driver Model #:**

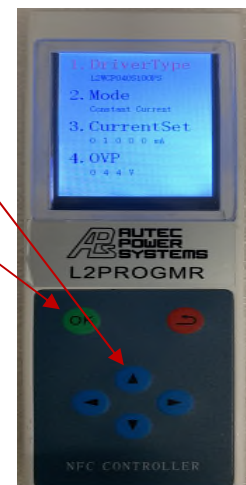
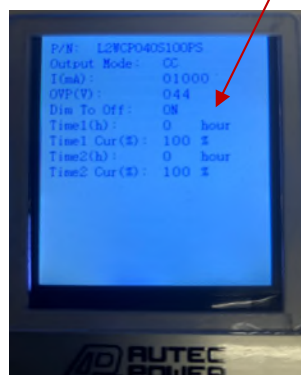
2.1 Identify the model # on the label of the LED Driver you want to program.



2.2 On the L2PROGMR controller module, use the up/down arrows to scroll to **Driver Type** and press **OK**.

2.3 Next, use the up/down arrows to scroll through the preloaded list of LED Driver model #'s. Press **OK** when you find the model # which corresponds to your LED Driver.

2.4 To view the current settings for the selected LED Driver model #, press the **red "back" button** quickly twice.



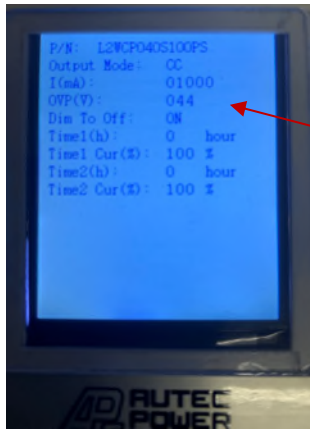
**NOTE:** If the **OUTPUT CURRENT(mA)**, **DIMMING** and **DIM-TO-OFF** settings are correct, there is no need to proceed further. If you wish to change these settings, proceed to Step 3.0.

Steps continued on next page...

## CHANGING THE SETTINGS OF THE LED DRIVER FOR YOUR APPLICATION:

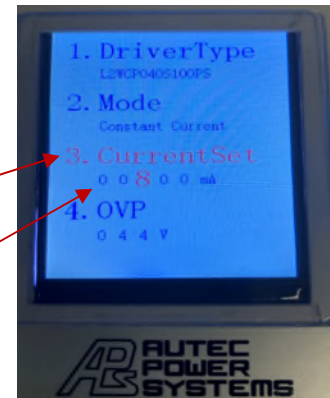
### 3.0 Changing the LED Driver OUTPUT CURRENT setting:

You can set the desired **Output Current** for the LED Driver (Refer to the product datasheet to determine the programmable **Output Current** settings for your specific **L2WCP Series LED Driver**.)



In this example, the default **Output Current** is 1000mA for the LED Driver model(L2WCP040S100PS) shown.

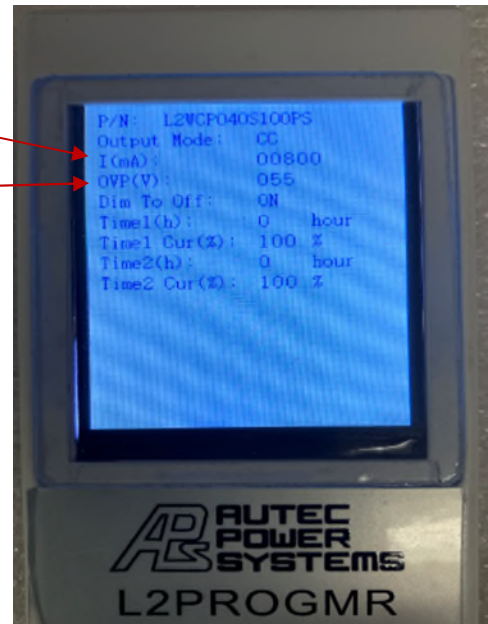
3.1 To change the **Output Current** value on the L2PROGMR controller module use the up/down arrows to scroll to option 3. "CURRENT SET". Press OK.



3.2 When the numbers change color (to Red) this indicates that you can now use the left/right and up/down arrows to choose the appropriate number and set the desired OUTPUT CURRENT value.

3.3 For this demonstration, we changed the **Output Current** to 800mA.

(The corresponding **Output Voltage** adjusted automatically to 55V after pressing the OK button.)



Steps continued on next page...

**MAKING ADDITIONAL SETTING CHANGES PRIOR TO WRITING THE CHANGES TO THE LED DRIVER:**

NOTE: If you wish to make changes to the **DIMMER TIMING** (Time 1 Set or Time 2 Set), **DIMMER TIME CURRENT** (Time 1 Current or Time 2 Current) or **DIM-TO-OFF** values, this is a good time to be done by selecting the proper Options (1-10) displayed on the main screens as shown below:



3.4 To make changes to the LED Driver setting values, scroll through the options using the up/down arrows on the L2PROGMR controller module. When the desired option is located, press OK.

3.5 Follow Step 3.2 for making desired changes to the numbers and option settings.

**When you have completed making the desired setting changes on the L2PROGMR controller module, it is time to reprogram the LED Driver to incorporate these new settings.**

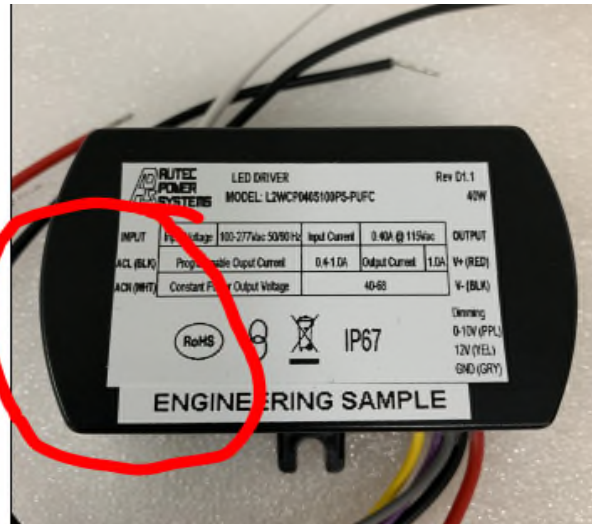
Steps continued on next page...

## PROGRAMMING THE LED DRIVER USING YOUR UPDATED SETTINGS:

**NOTE:** The programming of the LED Driver using the new settings is accomplished using near field communication technology. The Autec LXWCP Series LED Drivers have a built-in antenna which allows the programming to take place without any external power source being connected to the LED Driver.

### Locating the NFC Antenna (region) on the LED Driver:

4.0 The NFC antenna is assembled inside the LED Driver case and is located at the lower left quadrant section (AC input side) of the LED Driver as shown in the circled image below.



4.1 Before attempting to program the LED Driver, be sure you have the correct LED Driver model and the correct setting values displayed on the L2PROGMR controller module (See image below for reference).



4.2 If needed, scroll through the options on the L2PROGMR controller module to get to the main screen and choose DRIVER TYPE. Verify it is displaying the correct LED Driver model number and desired values to be programmed (See screen shot for reference).

4.3 To view the current settings for the selected LED Driver model #, press the **red** "back" button quickly twice. If all is correct, proceed to step 4.4.

Steps continued on next page...

#### PROGRAMMING THE LED DRIVER:

4.4 Place the L2PROGMR controller module on the top of the LED Driver directly over the NFC antenna area and press **OK**. ((See image below for reference).

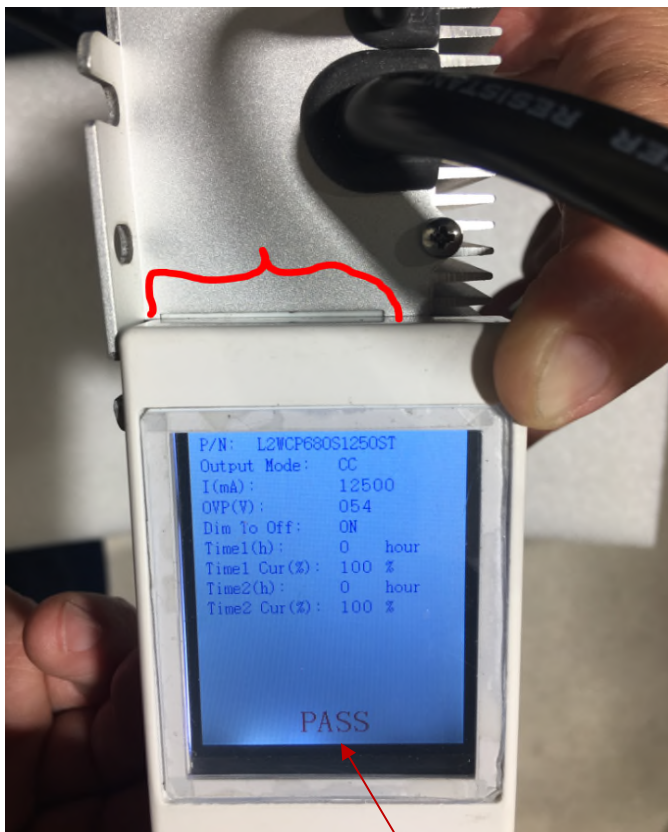
4.5 If the program has successfully completed the programming of the LED Driver, the LCD screen will display **PASS**. If the programming cycle was not successful it will display **FAIL**.



4.6 Repeat Step 4.4 until the LCD displays **PASS**. You may need to reposition the L2PROGMR controller module over the top of the LED Driver until you find the correct NFC antenna location.

4.7 For high power(L2WCP600, L2WCP680) series LED Drivers (aluminum case type) please see the image below for proper placement of the digital wand head over the programming access window.

Repeat Step 4.4 until the LCD displays **PASS**. You may need to reposition the L2PROGMR controller module over the window on the DC output end of the LED Driver until you find the correct NFC antenna location.



When the LCD displays **PASS**, the unit is successfully programmed with the new settings.

**The LED Driver is now correctly programmed and ready to be installed in the lighting application.**

For the most up-to-date version of this User Guide please go to our website  
<https://autec.com/downloads/> or contact [angela@autec.com](mailto:angela@autec.com)