



Access Statement for Chimera Climbing Centre

September 2021

Chimera Climbing Centre Canterbury
Unit 1
22 Maynard Road
Canterbury
CT1 3RH
01892 457294

info@chimeraclimbing.com
www.chimeraclimbing.com

Introduction

Chimera Climbing is a state-of-the-art dedicated bouldering centre, offering a fresh and exciting climbing experience for people of all abilities within a clean and modern facility. Chimera Climbing was made by climbers, is run by climbers and is loved by climbers. We are passionate in all we do, whether that be instruction, our route setting or our café facility.

Located within the Wincheap area of Canterbury, Chimera Climbing is situated on Wincheap Industrial Estate on Maynard Road.

Although the centre offers wheelchair access to the lower floor and café area, the activity itself and access to the mezzanine floor restricts participation by wheelchair

users. We do however support a number of paraclimbing participants with a range of disabilities, while one of our instructor signs when we delivery sessions to hearing impaired visitors.

Pre-Arrival

Getting Here:

Rail

As we are situated only a 10 minute walk – 650 metres - from Canterbury East Train station, this makes us easily accessible from London Victoria or any of the South Coast stations on the Chatham line.

This station has staff help available and ramp access for trains Mon-Fri 06:20- 19:00. The station has step free access to all platforms and tactiles to improve use for passengers with visual impairments

Call 0345 3227021 for station enquiries.

An alternative station is Canterbury West, located 1.1 miles from Chimera Climbing Canterbury. This station has staff help available and ramp access for trains Mon-Sun 05:00-01:00. All platforms have step free access.

Call 0345 3227021 for station enquiries.

Wheelchair accessible taxis may be pre booked for both stations .

Bus

The Stagecoach Bus Service 1A, 1X, 649, 667, and X4 passes with 800 metres of the centre – stopping at the Wincheap park and Ride

Accessible vehicles operating on stagecoaches services consist of low floor buses with a flat step-free entrance which can be used by wheelchairs; some buses may also have a kneeling facility.

Stagecoach Bus Customer Services Team: 0345 810 1000

Taxi Canterbury Galaxy Taxis Cars offer wheelchair accessible taxis for our physically disabled customers as priority service. To discuss any requirements contact Galaxy Taxis on 01227 450150 or email galaxy450150@gmail.com

We are unable to offer a collection service and the surrounding streets are urban and paved from both station and bus stop all the way to our front door.

Car Parking and Arrival

Car Parking is readily available adjacent to the centre and is extensive with 12 parking places available. Further places are available at up to a 200 metre away in the Wincheap Industrial estate pay and display.

There are no payment machines – parking is free, and no requirement for Blue Badge Parking. The parking surface is level and made of tarmac with disability ramp entry.



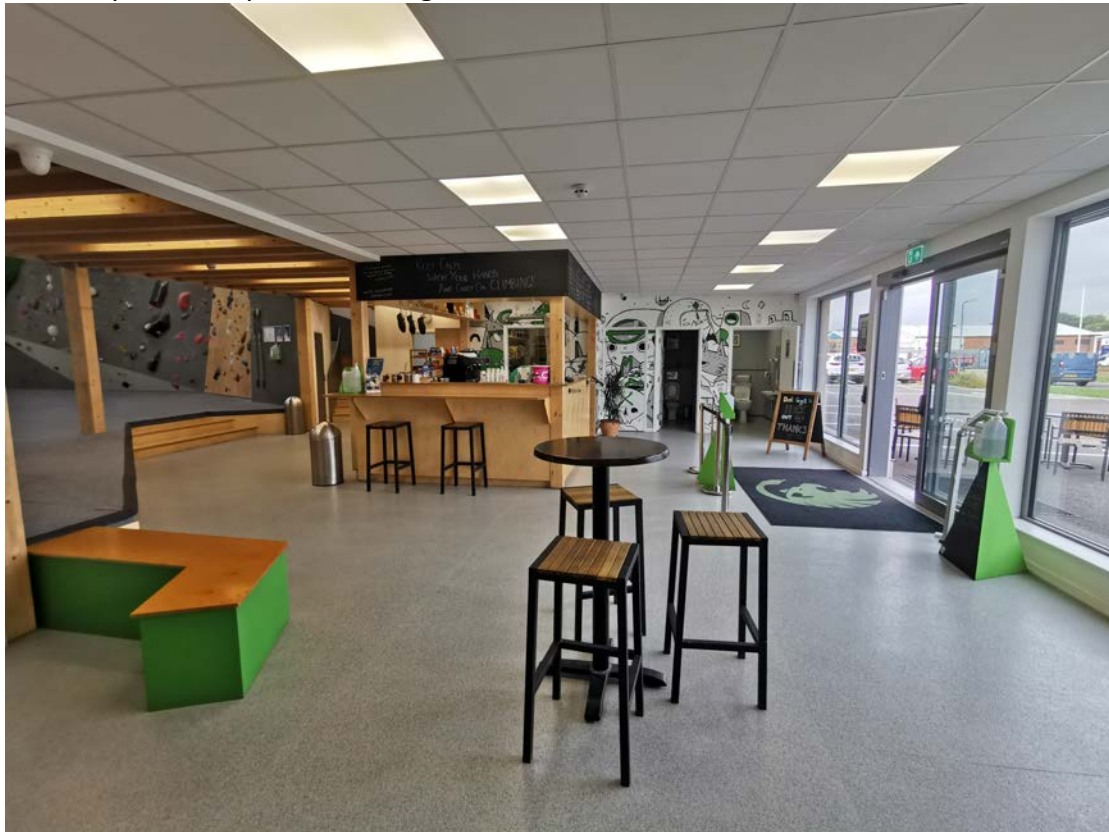
There is good lighting across the parking area, while the entrance is well illuminated. People may be dropped off adjacent to the wheelchair access and there is no kerbed or stepped access.

Please note, there is no handrail to the wheelchair access and the doors are automatic entry double doors allowing ease of access to wheelchair users.

Our safety video is subtitled to support the provision to hearing impaired people. Main Entrance and Reception Our double doors allows ease of entry immediately into our reception/café area. This area is level throughout and step free to the toilets which

include an accessible toilet which has a 910mm door access and accessibility support features.

There are ground floor seated areas available from which the climbing may be watched and enjoyed. The floor surface is a commercial linoleum and the area is well lit and open with spaced downlighters.



The registration system is app based and suitable for hearing impaired users. Carers are allowed free entry to support as necessary. If notified in advance, we are also able to provide instruction with a coach who is proficient in signing.

Catering & Shop

Our café provision is incorporated into reception and as such is immediately accessible once through the entrance doors as described. The clear door opening width of the entrance doors is 165cm and is approached via our automatic doors. There is ample clear space for wheelchair access throughout the ground floor.

The image in the previous section shows our reception area as described.

The café provides a range of hot and cold drinks including Barista standard coffees.

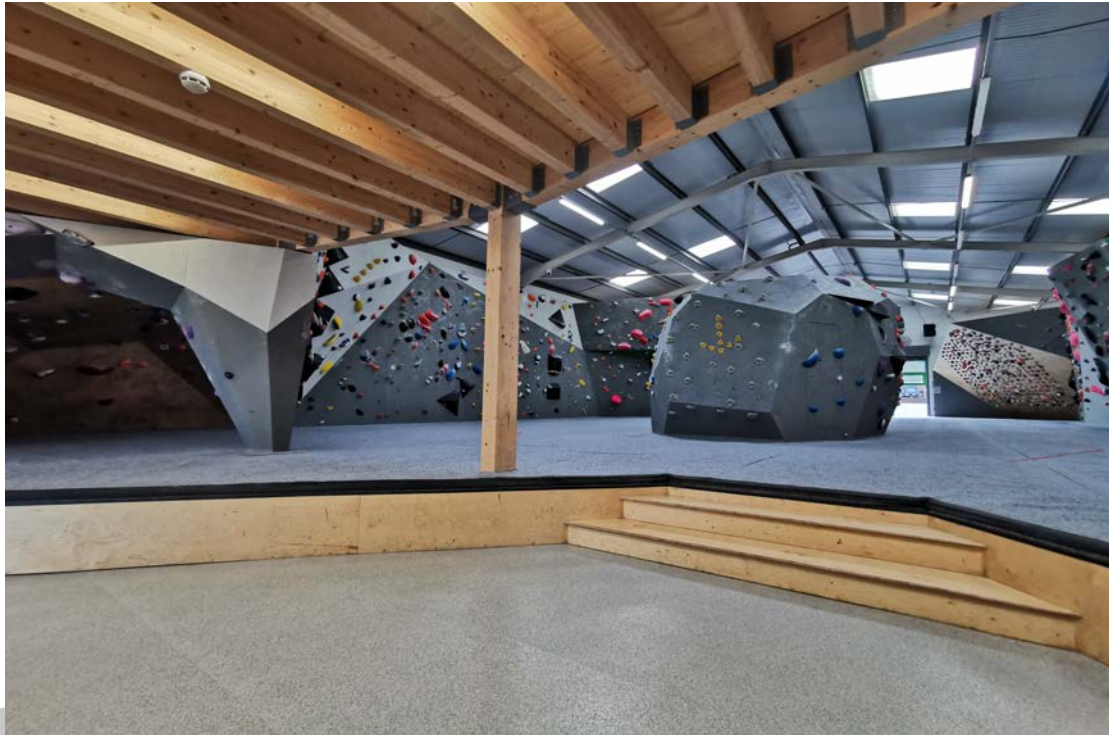
They are prepared and served by our friendly staff at the counter and can be brought over to people as needed. Seating is of a comfortable and informal nature.

Staff are also on hand to discuss the food and drinks which are available.

Attraction

Bouldering is climbing without ropes.

Although this can be an extremely demanding, physical activity, we are also able to include participants who hold a wide range of disabilities. We have a number of paraclimbers, some of who climb with prosthetics and some who do not. We currently sponsor and coach Josh Senior who has recently been invited to join the Team GB paraclimbing training squad for 2017.



We have well established links with deaf schools and also establishments such as Headway who work with people who have suffered from brain injuries. As an activity however, there are restrictions, and wheelchair access and participation upon the matting and walls is such a restriction.

Public Toilets

The Publics WCs are located next to our reception area.

There is an accessible toilet available, It is Unisex and is not locked at any time. Floor access is level from entrance to the centre through to the accessible toilet. Door width is 910mm. the space to the left of the toilet is 870mm in width and can be cleared for a wheelchair. The height of the WC from floor to seat is 480mm and there are vertical grab rails to each side and a horizontal grab rail to the left of the toilet.

Guests are able to alert an emergency with a red alarm cord emergency call system. The toilet is well lit using LED lighting. And the flooring is a non slip laminate. The taps are lever taps.



Additional Information

A small number of our Instructors have been given in house training in delivery to hearing impaired groups. They have also developed knowledge of climbing specific signing to help in delivery. We also have one instructor who is profoundly deaf and fully proficient in signing.

Our evacuation procedures include the clearance of all sectors of the centre by three members of staff; Bouldering Area, Toilets and Reception, Upstairs.

All visitors will be calmly guided to the nearest Fire Exit in the event that they do not see the signage.

We welcome assistance dogs within the centre and water bowls can be provided upon request.

Future Plans



We currently provided instruction for children with a range of learning difficulties, for paraclimbers, adults with brain injuries and hearing impaired schools. In order to maintain the quality of our provision, our instructors are encouraged to attend relevant CPD and share their knowledge with the rest of the team.

This will continue and already allows greater understanding of individual needs.

We also have an extension Project underway and due consideration will made to include further seating provision which is accessible to all.

Contact Information

Chimera Climbing Centre
Unit 3 North Farm Road
High Brooms Industrial Estate
Tunbridge Wells
TN2 3DR
01892 457294
info@chimeraclimbing.com www.chimeraclimbing.com

