



***Canto2***

***Monitoring and commissioning tool***



## Canto2



- For Windows
- Commissioning tool
- Send and receive CAN messages
- Both CAN 2.0A and 2.0B messages

Canto2 is CAN monitoring and commissioning tool for CAN and extended CAN messages. It is especially developed to work with CANopen and Exertus products.

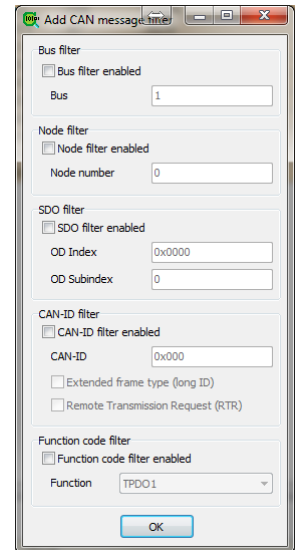
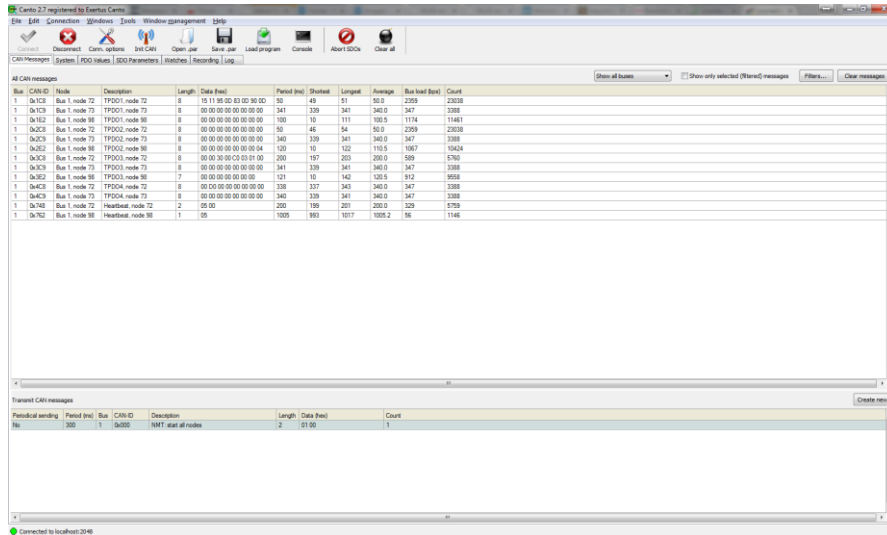
Watches can be created for the monitored CAN messages and their behaviour is shown in both numeric and graphical format.

Machine specific PDO and SDO messages can be defined with function specific names so that they are easier to understand during commissioning and by service technician.

Canto2 can be used to record all or filtered messages from the bus and also to play earlier recorded messages back to bus for problem solving and testing purposes.

## CAN messages

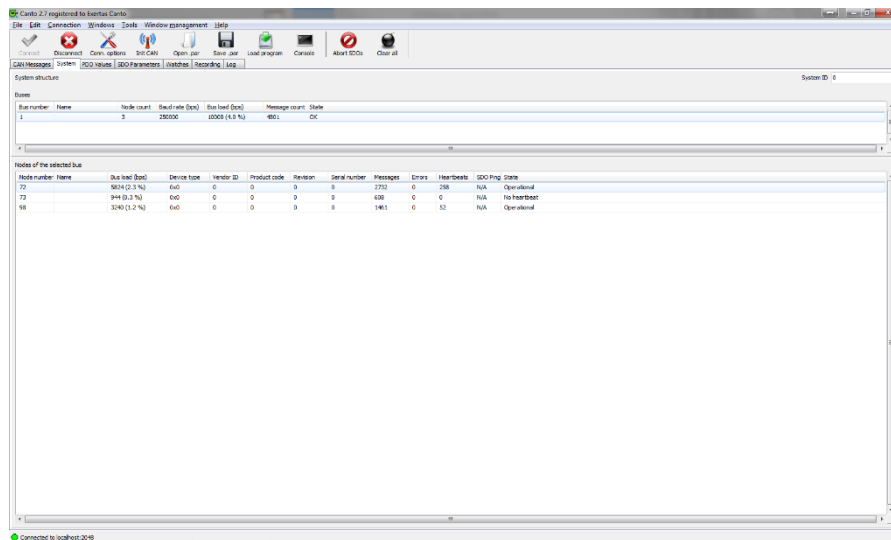
All or filtered messages on the bus can be seen at one glance on 'Messages tab'. Also repeated or periodical messages can be sent to the system.



Adding message filtering rule

## System

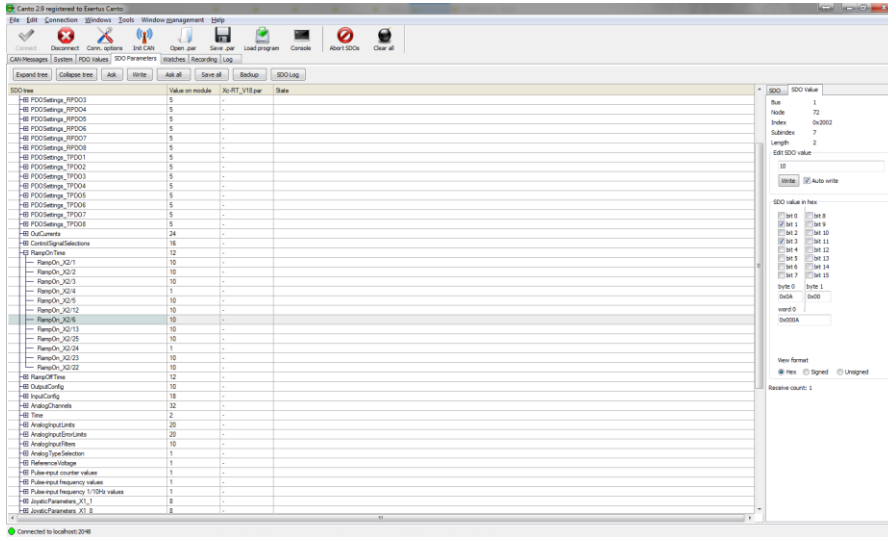
Basic information from bus load to connected nodes and their status can be seen at 'System tab'.



## PDO and SDO messages

The 'PDO and SDO tabs' are used with parameter file which can be product or project specific. Above parameter names it can also include values for them.

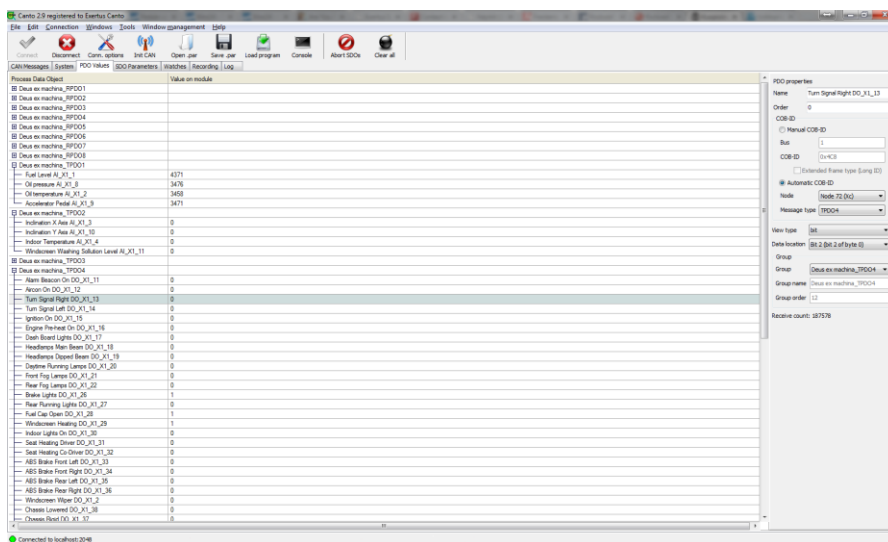
Product specific parameter file allows viewing both product specific PDO's and SDO's in detail and it also allows modifying the SDO's. Each data object is presented the way the contained information is easily recognised and easy to understand.



[-] PDOSettings_RPDO8	5
[-] PDOSettings_TPDO1	5
[-] PDOSettings_TPDO2	5
[-] PDOSettings_TPDO3	5
[-] PDOSettings_TPDO4	5
[-] PDOSettings_TPDO5	5
[-] PDOSettings_TPDO6	5
[-] PDOSettings_TPDO7	5
[-] PDOSettings_TPDO8	5
[-] OutCurrents	24
[-] ControlSignalSelections	16
[-] RampOn Time	12
[-] RampOn_X2/1	10
[-] RampOn_X2/2	10
[-] RampOn_X2/3	10
[-] RampOn_X2/4	1
[-] RampOn_X2/5	10
[-] RampOn_X2/12	10
[-] RampOn_X2/6	10
[-] RampOn_X2/13	10
[-] RampOn_X2/25	10
[-] RampOn_X2/24	1
[-] RampOn_X2/23	10
[-] RampOn_X2/22	10
[-] RampOff Time	12
[-] OutputConfig	10
[-] InputConfig	18
[-] AnalogChannels	32
[-] Time	2
[-] AnalogInputLimits	20

SDO messages with product specific names

Project specific parameter file is similar to product specific one. The difference is in the naming as they are typically clear text function names. While accessing a machine over bus it is much easier to recognize certain I/O or process value with a real name.

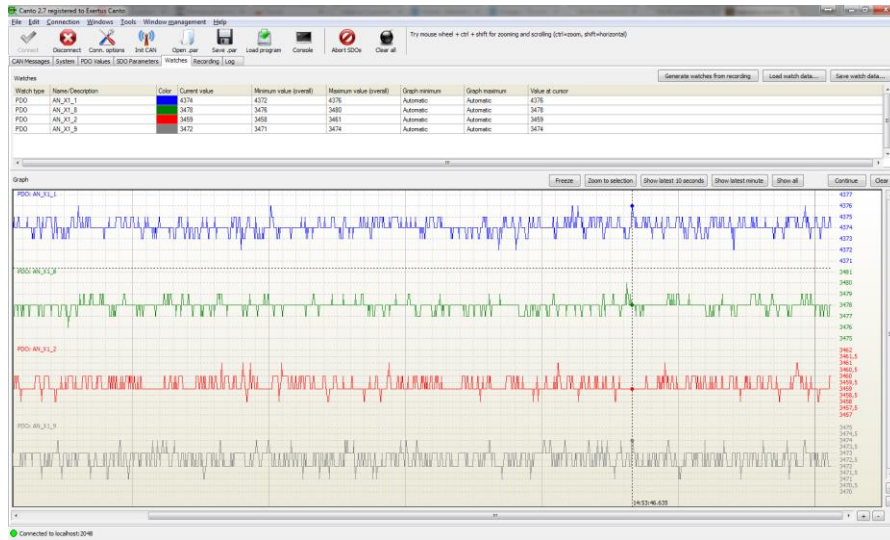


[-] Deus ex machina_RPDO8	
[-] Deus ex machina_TPDO1	
[-] Fuel Level AI_X1_1	4371
[-] Oil pressure AI_X1_8	3476
[-] Oil temperature AI_X1_2	3458
[-] Accelerator Pedal AI_X1_9	3471
[-] Deus ex machina_TPDO2	
[-] Inclination X Axis AI_X1_3	0
[-] Inclination Y Axis AI_X1_10	0
[-] Indoor Temperature AI_X1_4	0
[-] Windscreen Washing Solution Level AI_X1_11	0
[-] Deus ex machina_TPDO3	
[-] Deus ex machina_TPDO4	
[-] Alarm Beacon On DO_X1_11	0
[-] Alcon On DO_X1_12	0
[-] Turn Signal Right DO_X1_13	0
[-] Turn Signal Left DO_X1_14	0
[-] Ignition On DO_X1_15	0
[-] Engine Pre-heat On DO_X1_16	0
[-] Dash Board Lights DO_X1_17	0
[-] Headlamps Main Beam DO_X1_18	0
[-] Headlamps Dipped Beam DO_X1_19	0
[-] Daytime Running Lamps DO_X1_20	0
[-] Front Fog Lamps DO_X1_21	0
[-] Rear Fog Lamps DO_X1_22	0
[-] Brake Lights DO_X1_26	1
[-] Rear Running Lights DO_X1_27	0
[-] Fuel Cap Open DO_X1_28	1
[-] Windscreen Heating DO_X1_29	1
[-] Fuel Cap Open DO_X1_28	1
[-] Windscreen Heating DO_X1_29	1
[-] Indoor Lights On DO_X1_30	0

SDO messages with project specific names including connector pin numbers

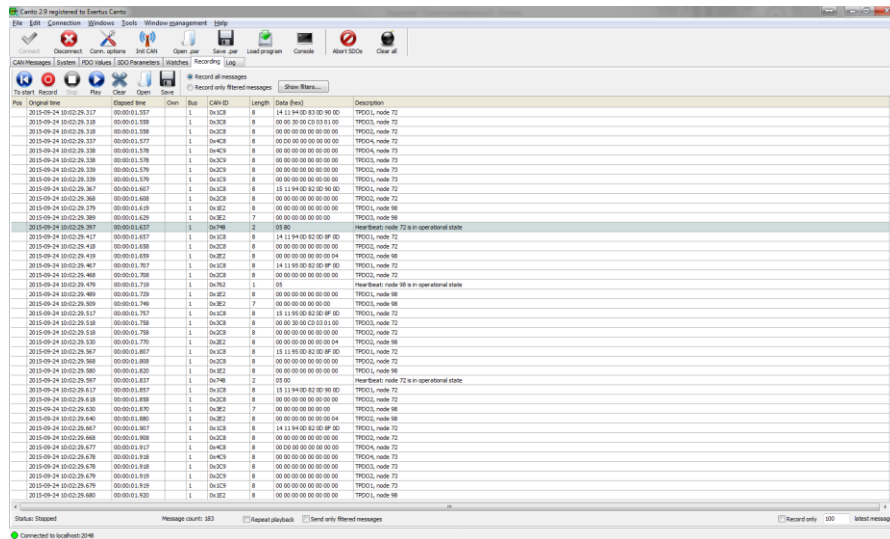
## Watches

Watches can be defined at 'CAN messages, PDO and SDO tab'.



## Recording and Log

Sometimes it is not enough to see graphical presentation for watch but one wants to see individual messages. 'Recording tab' can be used for this. All or filtered messages can be saved and also played back to bus.



Similarly, 'Log tab' captures bus related error messages such as SDO timeouts and timestamp errors.

Exertus reserves the right to change product details without prior notice.