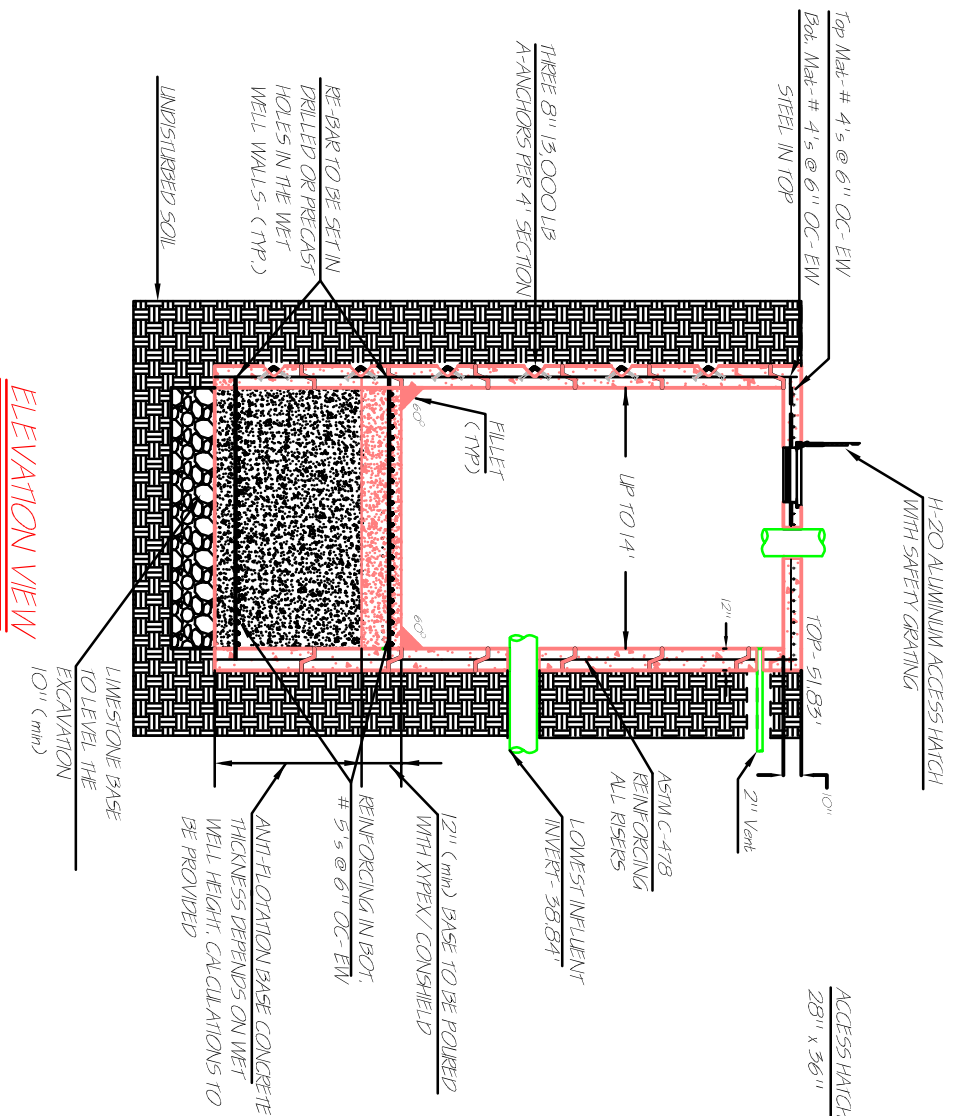
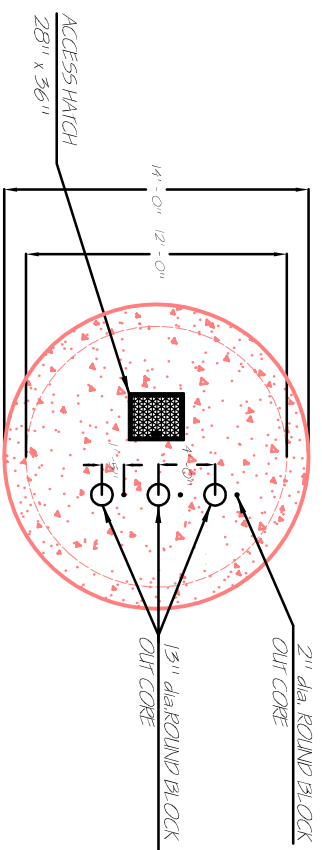


**INSTALLATION BY
CAISSON METHOD**



ELEVATION VIEW



PLAN VIEW

1. All precast concrete sections shall have a 28-day minimum compression strength of 4000 PSI. Type II cement shall be used.
2. Precast concrete sections shall be manufactured in accordance with the provisions of ASTM C478 as modified herein.
3. All Precast concrete including top shall include Xypex and Conshield admix. Dosage as follows:
CONSHIELD- 25 fl. oz. per 1 sack (94lbs) of cement
at W/C - rate of 0.40 = 2%
XYPEX C1000 - 2% - 5% By weight of portland cement
4. All concrete joints between the precast units shall be sealed with a Butyl Rubber Sealant only.
5. All pipe penetrating the wet well must have either a core and seal boot (A-Lok recommended), Link seal, or be grouted with cement using both Xypex and Conshield admixture
6. Aluminum hatch and vent to be provided by WWT

Typical Caisson Wet Well