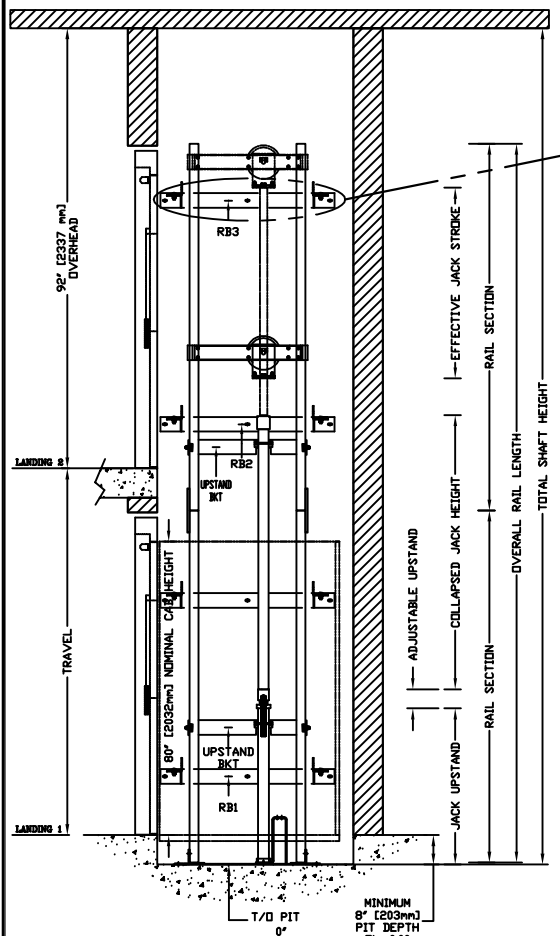
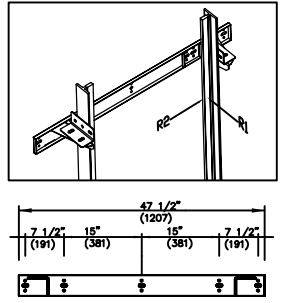


SECTIONAL VIEW - PROLIFT SCL Model TYPE 1L- 36"



TOP RAIL BRACKET RB3	AT TOP OF HOISTWAY CONSULT YOUR CONCORD REPRESENTATIVE FOR EXACT LOCATION
INTERMEDIATE RAIL BRACKET RB2	48" [1219mm] INTERVALS ABOVE BOTTOM BRACKET
BOTTOM RAIL BRACKET RB1	24" [610mm] ABOVE PIT FLOOR

RAIL BRACKET



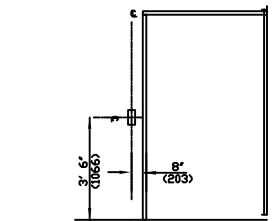
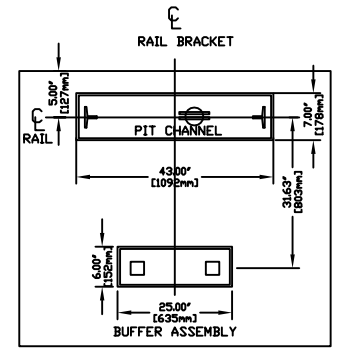
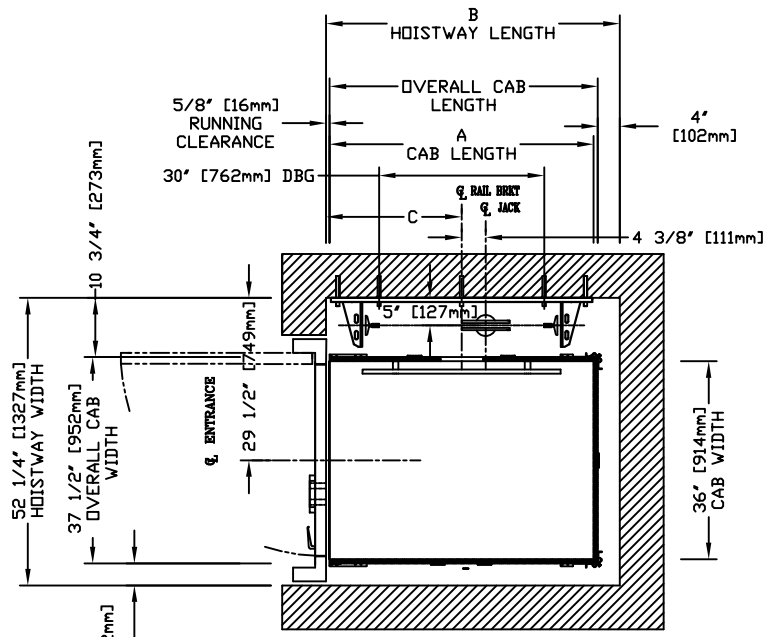
RAIL FORCES

*R1	*R2	CAPACITY
355.03 lbf.	251.50 lbf.	1400 lbs.
304 lbf.	194 lbf.	1000 lbs.
RAIL WEIGHT : 8.0 lbs / ft		

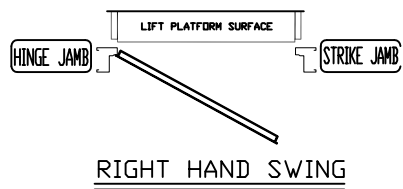
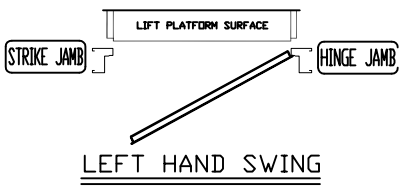
R3 NOTE:	
PIT FLOOR TO SUPPORT LOAD OF:	
* (INCLUDES IMPACT)	
CAPACITY	
6.4 Kips	1400 lbs.
5.33Kips	1000 lbs.

FOR TOTAL PULL-OUT FORCE ON RAIL BRACKET, R1 MUST BE DOUBLED eg. 608 lbf for 1000 lbs.

PLAN VIEW - PROLIFT SCL Model TYPE 1L- 36"



HALL FIXTURE LOCATION LEFT HAND AS SHOWN RIGHT HAND OPPOSITE I. HALL BUTTON AT ALL FLOORS



HOISTWAY DIMENSION

A CAB LENGTH		B HOISTWAY LENGTH		C RAIL BRKT CENTER LINE	
mm	Inches	mm	Inches	mm	Inches
1219	48	1356	53 3/8	635	25
1372	54	1508	59 3/8	711	28
1524	60	1661	65 3/8	787	31

COMMERCIAL WHEELCHAIR LIFT  
PROLIFT SCL MODEL TYPE 1L- 36"

CUSTOMER:	DATE:		
PROJECT:	REVISION DATE:		
LOCATION:	COMPLETED BY:		
		JOB No.	SHEET No.

DOCUMENT REVISION #0, DATE: 12/09/10