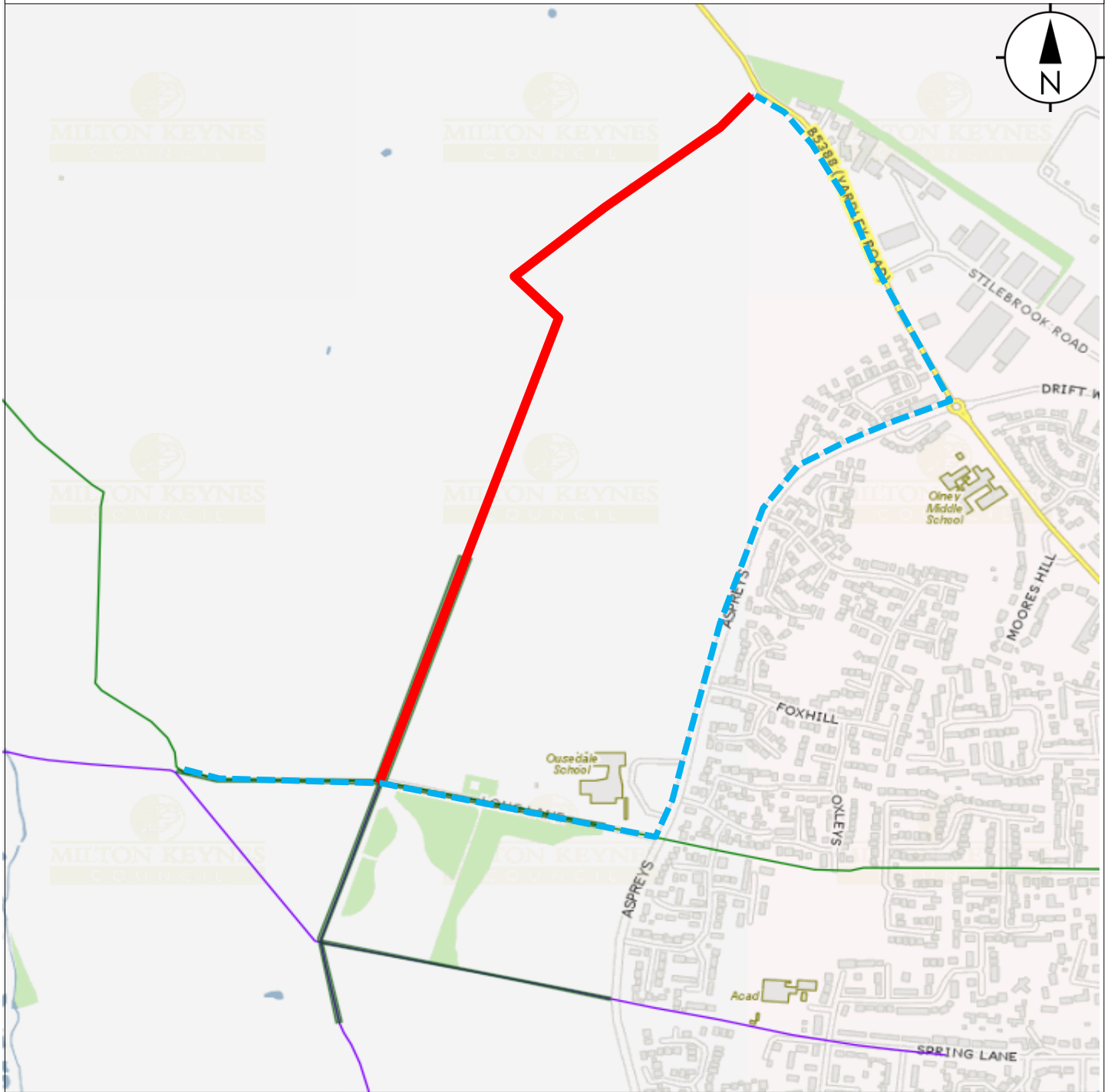



# MAP FOR ORDER



## KEY

 Length of footpath to be closed

 Alternative route

Map not to scale

Map referred to in the Council of the Borough of Milton Keynes (Footpath 14, Olney) (Temporary Closure) Order 2020.

The common seal of the Council of the Borough of Milton Keynes was hereunto affixed in the presence of:

.....  
**HEAD OF LEGAL SERVICES**