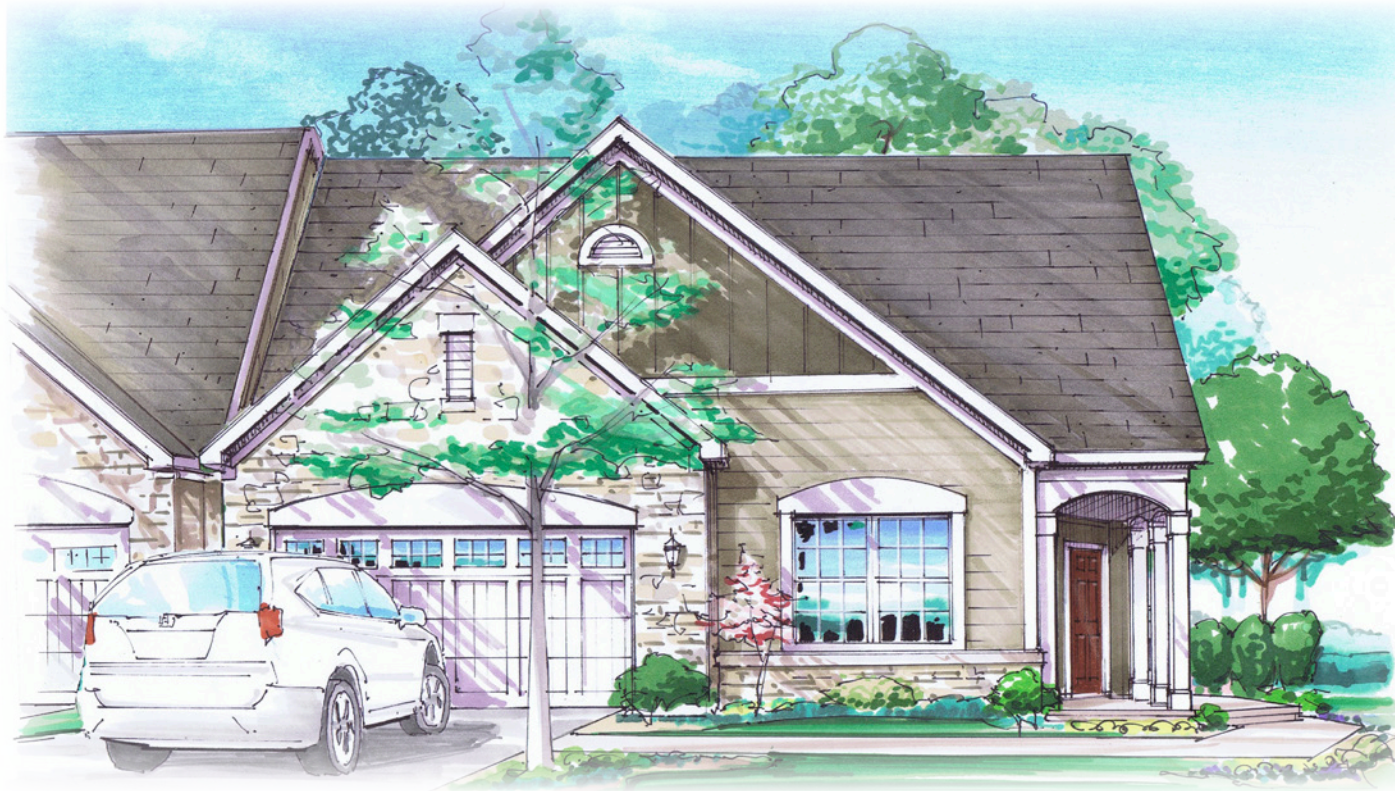


# The Captiva

2-3 BEDROOMS • 2-3 BATHROOMS • FLEX ROOM • 2 CAR GARAGE



## Description:

The Captiva offers an open floor plan with lots of storage and designed for today's lifestyle

- Energy efficient construction and features for lower utility bills
- Views into private courtyard from nearly every room
- Enhance your outdoor living with a choice of several optional porches



941 Chatham Lane, Suite 100 • Columbus, Ohio 43221 • 937-424-0519 • 614-457-7295 fax • [www.WalkerVillas.com](http://www.WalkerVillas.com)



© 2015 Liberty Grand. Because we are constantly improving our product, we reserve the right to revise, change, and/or substitute product features, dimensions, specifications, architectural details and designs without notice. This brochure is for illustration only and is not part of a legal contract. These plans and designs are the property of Liberty Grand, LLC and are subject to both copyright and pending patent protection. Use of any part of these plans and designs without the written consent of Liberty Grand, LLC is prohibited. 1/16 23371

# The Captiva

## Approximate Room Dimensions:

Great Rm	16' x 24'
Dining Rm	11' x 12.5'
Kitchen	12' x 12.5'
Owner's Bed	16.5' x 15'
Guest Bed	14' x 13'
Flex Room	11' x 9'



## Interior Features:

- Open floor plan with lots of outdoor views
- 9 foot ceilings throughout
- Large Owner's Suite with spacious bath and large closet
- Approx. square feet range: 1,898-2,424

## Optional Plan Choice Available:

- Sitting Room, Covered Porch or Screened Porch off Owner's Suite
- Courtyard style covered **Grand Terrace** centrally located
- Second floor **Grand Suite** Bonus Room
- Expanded deluxe kitchen design
- Walk-in shower in Owner's Master Bath





FIRST FLOOR PLAN WITH OPTIONAL GRAND SUITE



OPTIONAL SECOND FLOOR GRAND SUITE  
(Additional space is available to expand second floor)



OPTIONAL  
SITTING AREA



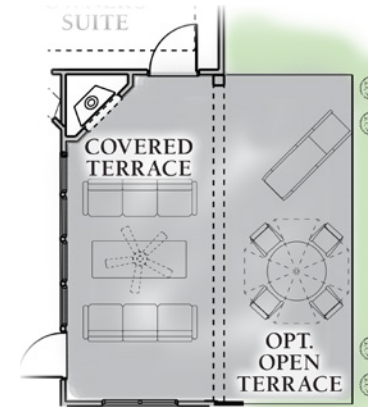
OPTIONAL  
COVERED PORCH



OPTIONAL  
SCREENED PORCH



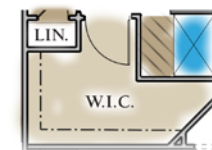
**GRAND TERRACE OPTION**  
(Optional Deluxe Kitchen Shown)



**OPTIONAL OUTDOOR FIREPLACE  
AND EXTENDED TERRACE**  
(Only available with Grand Terrace option)



**OPTIONAL DELUXE KITCHEN**



**OPTIONAL MASTER  
WALK-IN SHOWER**