

Table of Contents

About Us/General Info	2-3	Digital Press	28-33
Photo Prints	4	Photo Books	28
Big Prints	5	Greeting Cards	29
Finishing	6	Photo Calendars	30
		Business Cards	31
		Flyers	32
		Promotional Printing	33
Fine Art Prints	7	Vinyl Products	34-37
Wall Decor	8-13	Promotional Products	34
Canvas	8-9	Banners	35
Metal	10-11	Signs	36
Stacked Metal	11	Vinyl	37
Fine Art Metal	11		
MDF	12	Photo Gifts	38-41
Gallery Blocks	12	Drinkware	38
Wood	13	Ornaments	39
Acrylic	13	Fabrics	40
		Novelties	41
Film Processing	14-16	Studio Services	42
Color Negative	14	Passports	42
Black & White	15	Photo Booth Rentals	43
E6 Slide & Odd Formats	16		
Design, Retouch & Scanning	18-23	Framing & Matting	44
Restorations	18-19		
Film Scanning	20		
Print Scanning	21		
Gather Box	22		
Design & Image Recovery	22		
Scan Size Chart	23		
Video & Audio Transfers	24-27		
8mm + 16mm Reels	24		
Audio and Video Cassettes	25		
Digital Video Services	26		
Slideshows	26		
Custom Editing	26		
Duplication & Packaging	27		

About Us/General Info

Customer Service & Mission

Mike’s Camera operates 10 imaging superstores, 5 in Colorado and 5 in Northern California. Our success is based on stocking a complete selection of photo and video cameras and other picture taking accessories, as well as offering printing on virtually anything and everything! Plus, we back our products and services with an expert, friendly staff of creative and customer-first staff.

Hours of Operation

Store hours are Monday-Friday from 9:00am to 7:00pm, Saturdays from 10:00am to 5:00pm and Sundays 11:00 am to 5:00pm. We are closed on major holidays; store hours may shorten the day before some holidays. We also extend our hours during peak periods. Please call ahead during these times to confirm store hours.

Online Orders

Orders submitted through our online systems are accepted electronically. Processing of these orders is done during normal business hours.

Turnaround Times

With each state operating 5 stores and 1 store in each state as a hub for certain services, it is best to check with the store you are picking up at for up-to-date turnaround times for the services you need. These depend on machine capacity, volume of orders and equipment maintenance time.

The Smile Club

The Smile Club is our annual membership program that comes packed with discounts! Smile Club memberships are \$24.99 a year for the first year, \$19.99 renewed and are free for the first year with camera purchases and to students and active military with ID!

Benefits include:

- Half price 4x6 prints every Tuesday at our kiosks
- 35% off 4x6 prints or a FREE second set of prints
- 35% off color negative and black & white film developing scanning and printing
- 10% off color slide film processing
- 10% off all reprints, enlargements, poster & fine-art prints
- 10% off all scanning, transfer, restoration and A/V services
- 10% off photo gifts, mugs & novelties
- 10% off photo books, calendars and greeting cards
- 10% off custom framing
- 10% off canvas and metal prints
- 20% off ready made picture frames and mats
- 20% off photo albums and scrapbook supplies

Smile Club Membership		
Type	Code	Price
New	SC (700)	\$24.99
Renewal	SCR (703)	\$19.99
Student	UPC (704)	FREE

About Us/General Info

Rush

We don’t believe in rush fees, or fees of any sort. If we can do it, we will. If we can’t, we’ll tell you. If there is a charge to us to make that happen, say rush shipping materials to us for an order then we will pass that on to the customer, but in general we do not believe in rush fees. We believe in working with all of our customers to understand what their needs are, and making it work.

Shipping

We can ship orders to you through UPS and USPS. We don’t make money on shipping; we charge the customer what our cost of shipping and packaging is. Shipping is free on any order over \$250, as well as during certain promotional periods.

Payment Options

We accept all major credit cards and payment online.

\$5 Minimum

We require a purchase of at least \$5; orders that fall beneath \$5 are rounded up to \$5 before tax.

Limit of Liability

Mike’s Camera, Inc. and Mike’s Camera of California, LLC. are not responsible for any damage including total loss of photographic originals and customer property. We will not hold orders for pickup for longer than 120 days. Unclaimed photofinishing is not eligible for a refund and does not imply or express any liability on our part.

Traditional Photographic Processes

Each of our 10 stores has a chemical silver halide lab printer, either a Fuji 370 or 570 and a color negative film processor. These machines print in sRGB color space and print up to either 8” or 12” wide. Larger prints will be printed on 24” and larger wide format inkjet printers, with archival photo grade inks and papers.

Satisfaction Guarantee & Refund Policy

We strive to fulfill your expectations and guarantee satisfaction for your project. When placing your order, our professional team will assess your project and advise on the best outcome. If your project still has not met your needs, our team will work with you until you are satisfied. All circumstances must be discussed in the store. In the event that we make a mistake, we will issue a refund. Some services are non-refundable, such as design and custom framing.

Copyright

If we receive an order that has any obvious indication of copyright; that appearing to be taken by a professional photographer, that appearing to be taken from the internet, and watermarks on the image or in the metadata, we require a copyright release signed by the legal owner of that image, not just by the person requesting the print. Many professional photographers now grant copyright releases after their shoots to clients, look on your CD or digital download from your photographer for a document stating the permissions granted.

Photo Prints

Our prints are color and density adjusted by a real human, and quality checked before they get packaged and delivered.
Smile Club members save 35% on 4x6 prints from digital OR a second set free: use PDF4621 (271)
All other sizes including film reprints save 10%

LAB PRINTS from DIGITAL

Glossy / matte photo paper. Discounts are for multiples of same image.

Print Size	Code	1-5	6-19	20-39	40-99	METALLIC (221)
WALLET PAIR	23 (250)	46¢	29¢	29¢	26¢	80¢
3.5x5	35 (301)	35¢	26¢	26¢	22¢	99¢
3x4	34 (207)	35¢	26¢	26¢	22¢	99¢
4x6	46 (302)	35¢	26¢	26¢	22¢	99¢
4.5x6	4.56 (456)	43¢	30¢	30¢	27¢	99¢
5x7	57 (253)	\$1.99	\$1.09	\$1.09	82¢	\$2.99
8x10	8x10 (254)	\$5.99	\$4.99	\$4.49	\$3.99	\$8.99
8x12	8x12 (256)	\$6.99	\$5.99	\$5.49	\$4.99	\$9.99
11x14	1114 (257)	\$9.99	\$7.99	\$6.99	\$5.99	\$14.99
12x18	1218 (288)	\$14.99	\$12.99	\$10.99	\$8.99	\$19.99

LOCKET PRINTS

LOCKET (335)



For **\$15.99**, we can resize a photo to fit inside your locket! We will print several copies of your photo on a **4x6** matte print for you to cut out and install into your locket.

EXPRESS BIG PRINTS

EXPINKJET (441)

Print Size	Enhanced Matte	Pearl/Glossy
16x20	\$28.00	\$27.00
16x24	\$29.00	\$28.00
20x24	\$32.00	\$30.00
20x30	\$40.00	\$38.00
24x24	\$38.00	\$36.00
24x30	\$48.00	\$45.00
24x36	\$57.00	\$54.00

LAB PRINTS from FILM

35mm, 120 or mounted slide.

Print Size	Code	Price
WALLETS	FM23 (361)	\$1.99
4x6	FM46 (337)	49¢
5x5	FM55 (260)	\$2.49
5x7	FM57 (338)	\$2.99
8x10	FM810 (358)	\$7.99
8x12	FM812 (326)	\$9.49
11x14	FM1114 (359)	\$13.49
12x18	FM1218 (385)	\$18.99



SQUARE AND PANORAMIC

From digital images.

Print Size	Code	Price
4x4	46 (302)	35¢
5x5	57 (253)	\$1.99
8x8	8x10 (254)	\$5.99
10x10	1114 (257)	\$9.99
12x12	1218 (288)	\$14.99
4x12	4x12 (491)	\$1.99
10x20	1020 (255)	\$19.99
12x24	1224 (424)	\$24.99

Big Prints

Smile Club saves 10%

Print epic shots bigger than life economically! Make these poster sizes stand out more by mounting on gatorboard or even adding a custom frame. We offer several different papers, including a few options that can be done quickly or same day for memorials and other rush events.

INKJET (482)

Size	Enhanced Matte	Poster Board	Semi-Matte	Premium Lustre	Premium Glossy	Silver Metallic	HP Heavy Matte	HP Everyday Satin	HP Vivid Backlit
8x10	\$9.00	\$14.00	\$12.00	\$12.00	\$12.00	\$13.00	\$9.00	\$10.00	\$15.00
11x14	\$18.00	\$27.00	\$24.00	\$24.00	\$24.00	\$24.00	\$18.00	\$19.00	\$28.00
12x18	\$21.00	\$35.00	\$33.00	\$33.00	\$33.00	\$34.00	\$21.00	\$22.00	\$40.00
16x20	\$28.00	\$42.00	\$38.00	\$38.00	\$38.00	\$39.00	\$27.00	\$28.00	\$41.00
16x24	\$29.00	\$48.00	\$43.00	\$43.00	\$43.00	\$43.00	\$28.00	\$29.00	\$44.00
20x24	\$32.00	\$50.00	\$43.00	\$43.00	\$43.00	\$45.00	\$30.00	\$32.00	\$55.00
20x30	\$40.00	\$63.00	\$54.00	\$54.00	\$54.00	\$56.00	\$38.00	\$40.00	\$69.00
24x30	\$48.00	\$75.00	\$65.00	\$65.00	\$65.00	\$68.00	\$45.00	\$48.00	\$83.00
24x36	\$57.00	\$90.00	\$78.00	\$78.00	\$78.00	\$81.00	\$54.00	\$57.00	\$99.00
30x40	\$79.00	\$125.00	\$108.00	\$108.00	\$108.00	\$113.00	\$75.00	\$79.00	\$138.00
30x60	\$106.00		\$138.00	\$138.00	\$138.00	\$144.00	\$100.00	\$106.00	\$194.00
40x50	\$118.00		\$153.00	\$153.00	\$153.00	\$160.00	\$111.00	\$118.00	\$215.00
40x60	\$133.00		\$183.00	\$183.00	\$183.00	\$192.00	\$125.00	\$133.00	\$242.00
48x60							\$133.00	\$143.00	\$278.00
40x96	\$173.00		\$240.00	\$240.00	\$240.00	\$253.00	\$159.00	\$213.00	\$359.00
54x96							\$231.00	\$309.00	\$541.00



Finishing Options

Smile Club saves 10%

Add mounting to your print so that it does not slip or buckle in your frame or if you don't want to frame it at all. Express mount 3/16th foam core available on-site at all locations, all other finishing is done at the main lab.

	EXPMOUNT (444)	MOUNT (468)			LAMINATE (486)	
Print Size	3/16" White Foam Core	3/16" Black Gator Board	1/2" Black Gator Board	3/16" Black Ultra Board	3 mil Matte, Gloss or UV	10 mil Satin Textured UV
8x10	\$7.00	\$12.00	\$13.00	\$13.00	\$6.00	\$8.00
11x14	\$11.00	\$19.00	\$21.00	\$24.00	\$10.00	\$13.00
12x18	\$12.00	\$24.00	\$27.00	\$29.00	\$12.00	\$17.00
16x20	\$13.00	\$31.00	\$36.00	\$38.00	\$14.00	\$21.00
16x24	\$16.00	\$35.00	\$40.00	\$43.00	\$16.00	\$24.00
20x24	\$20.00	\$43.00	\$50.00	\$53.00	\$17.00	\$27.00
20x30	\$25.00	\$54.00	\$63.00	\$67.00	\$19.00	\$33.00
24x30	\$36.00	\$65.00	\$75.00	\$80.00	\$20.00	\$35.00
24x36		\$72.00	\$84.00	\$90.00	\$21.00	\$42.00
30x40		\$88.00	\$96.00	\$104.00	\$25.00	\$50.00
30x60		\$100.00	\$125.00	\$138.00	\$38.00	\$75.00
40x50		\$111.00	\$139.00	\$153.00	\$42.00	\$83.00
40x60		\$117.00	\$150.00	\$167.00	\$50.00	\$100.00
44x60		\$128.00	\$165.00	\$183.00	\$55.00	\$110.00
40x72		\$140.00	\$180.00	\$200.00	\$60.00	\$120.00
48x60		\$140.00	\$180.00	\$200.00	\$60.00	\$120.00
48x72		\$156.00	\$204.00	\$228.00	\$72.00	\$144.00
44x84		\$167.00	\$218.00	\$244.00	\$77.00	\$154.00
48x84		\$182.00	\$238.00	\$266.00	\$84.00	\$168.00
44x96		\$191.00	\$249.00	\$279.00	\$88.00	\$176.00
48x96		\$208.00	\$272.00	\$304.00	\$96.00	\$192.00



Foam Core | Ultra Board | Gator Board

This type of dry mounting is great for framing large photos so that they do not crinkle or bubble in a frame over time. These mounts can also be hung or stuck directly on the wall for a simpler, more subtle look than a framed photo. For very large sizes, 30" x 40" and bigger, we recommend using either 1/2" gator or 3/16" ultra board to prevent warping and bending.

Fine Art Prints

Smile Club saves 10%

Giclee prints are true fine art prints on high quality papers with a variety of soft, smooth and rugged textures. Add our proofing service for **\$25.00** PROOF (331) and receive up to three 8" x 10" proofs to match color exactly.

	FINEART (445)						
Print Size	Smooth Fine Art	Textured Fine Art	Somerset Velvet	Satin Canvas	William Turner	Fine Art Bartya	Photo Rag Metallic
8x10	\$15.00	\$15.00	\$15.00	\$17.00	\$17.00	\$17.00	\$17.00
11x14	\$29.00	\$29.00	\$29.00	\$32.00	\$32.00	\$32.00	\$32.00
12x18	\$41.00	\$41.00	\$41.00	\$45.00	\$45.00	\$45.00	\$45.00
16x20	\$49.00	\$49.00	\$49.00	\$53.00	\$56.00	\$56.00	\$56.00
16x24	\$51.00	\$51.00	\$51.00	\$55.00	\$59.00	\$59.00	\$59.00
20x24	\$57.00	\$57.00	\$57.00	\$63.00	\$67.00	\$67.00	\$67.00
20x30	\$71.00	\$71.00	\$71.00	\$79.00	\$83.00	\$83.00	\$83.00
24x30	\$85.00	\$85.00	\$85.00	\$95.00	\$95.00	\$95.00	\$95.00
24x36	\$102.00	\$102.00	\$102.00	\$114.00	\$114.00	\$114.00	\$114.00
30x40	\$142.00	\$142.00	\$142.00	\$158.00	\$158.00	\$158.00	\$158.00
40x60	\$267.00	\$267.00	\$267.00	\$300.00	\$275.00	\$275.00	\$275.00
44x72	\$308.00	\$308.00	\$308.00	\$374.00	\$319.00	\$319.00	\$319.00
40x96	\$373.00	\$373.00	\$373.00	\$453.00	\$387.00	\$387.00	\$387.00



Textured Fine Art | Detail enhanced and magnified

Canvas

Smile Club saves 10%

Our premium canvas gallery wraps can be ordered in any size, and are made of thick, real canvas photographic stock wrapped over real wood stretcher bars. Edges can be mirrored, colored or left to bleed around the sides. 1/2" bars should not be used on unframed prints larger than 16x20.

CANVAS (230)

Print Size	Canvas Only	Canvas 1/2" Bars	Canvas 1" Bars	2" Canvas
8x10	\$17.00	\$35.00	\$43.00	\$51.00
8x12	\$18.00	\$38.00	\$46.00	\$54.00
11x14	\$32.00	\$54.00	\$63.00	\$74.00
12x18	\$45.00	\$71.00	\$81.00	\$95.00
16x20	\$53.00	\$83.00	\$95.00	\$111.00
16x24	\$55.00	\$88.00	\$102.00	\$120.00
20x24	\$63.00	\$96.00	\$110.00	\$128.00
20x30	\$79.00	\$116.00	\$131.00	\$152.00
24x30	\$95.00	\$136.00	\$152.00	\$176.00
24x36	\$114.00	\$159.00	\$176.00	\$203.00
30x40	\$158.00	\$211.00	\$231.00	\$263.00
30x50	\$188.00	\$244.00	\$266.00	\$301.00
40x50	\$250.00	\$314.00	\$339.00	\$379.00
44x50	\$275.00	\$343.00	\$369.00	\$411.00
40x60	\$300.00	\$372.00	\$399.00	\$444.00



Oil Painting Treatment We add depth to your canvas to mimic the aesthetic of an oil painting. Canvas or print not included in price.	PAINT (446)	
	Size	Price
	11x14	\$87.00
	16x20	\$99.00
	20x24	\$119.00
	24x30	\$150.00

Canvas wraps are available in gallery, mirror, or color borders.

Canvas Image Splits

Smile Club saves 10%

Image splits are a great way to turn a boring wall into something truly stunning. Wondering what to do with a large wall space above your sofa, bed or dining room? Take one image see how we can transform your photograph into an amazing show piece.

CANVAS (230)

Print Size	1" Bars	2" Bars
3 - 12x12 (36x12)	\$147.00	\$173.00
3 - 12x24 (36x24)	\$216.00	\$255.00
3 - 20x36 (60x36)	\$365.00	\$423.00
3 - 20x40 (60x40)	\$404.00	\$468.00
3 - 24x24 (72x24)	\$308.00	\$358.00
3 - 36x24 (72x36)	\$423.00	\$488.00
3 - 30x30 (30x90)	\$435.00	\$499.00
4 - 12x12 (24x24)	\$196.00	\$231.00
4 - 24x16 (48x32)	\$327.00	\$384.00
4 - 36x24 (72x48)	\$564.00	\$650.00
4 - 36x36 (72x72)	\$752.00	\$855.00
4 - 40x24 (80x48)	\$624.00	\$717.00



Open back w/ wire hanger included



Dust cover premium back add \$9.50



FRAMED CANVAS
CANVAS (230)



Framed Canvas
1/2" gallery wrap in wood float frame, with a 1/4" gap between the canvas and frame. Available in brown, black & white and premium dust cover back included. Ask about custom sizes, prices listed here are just a starting point.

Size	Price
8x10	\$77.00
11x14	\$96.00
16x20	\$141.00
20x24	\$162.00
24x36	\$230.00
30x40	\$272.00

Metal Panels

Smile Club saves 10%

Chromaluxe aluminum metal panels are sharp, brilliant and vibrant, and will transform any space! Small and medium sizes have the option for a desktop easel back or a shadow mount, large and super large sizes include a hanging system with stiffeners to keep the panel from bending. All prices include corner treatment and hanging back or desk easel.

SMALL AND MEDIUM CL1 (316)

Size	Price	Size	Price
4x6	\$11.99	16x20	\$114.99
5x5	\$12.99	16x24	\$137.99
5x7	\$17.99	20x20	\$143.99
8x8	\$31.99	20x24	\$172.99
8x10	\$39.99	20x30	\$215.99
8x12	\$47.99	24x30	\$258.99
11x14	\$54.99	24x36	\$310.99
12x18	\$77.99	30x30	\$323.99
odd sizes <100 sq/in	50¢ sq/in	odd sizes >100 sq/in	36¢ sq/in

SUPER LARGE FORMAT CL1000 (368)

Size	Price
30x40	\$359.99
32x48	\$460.99
36x48	\$517.99
40x60	\$719.99
odd sizes >1000 sq/in	30¢ sq/in

Metal Options

Our metal has the base options of **white** or **clear**. A white base will produce vibrant colors, while a clear base will show a brushed metal appearance. Finishing options include **glossy** and **matte**. Corners can also be rounded or squared. These options can be mixed and matched to create personalized art for your home or office.



Stacked Metal

Smile Club saves 10%

Stacked metal prints will turn your image into a vibrant and bold statement. We will print either a texture or another image onto the background panel and float mount the two to create dimension. Get creative with these, the sizes and combinations listed are only suggestions and we can float mount many sizes. We recommend the matte finish on a clear finish backing panel (standard).

METAL SQUARED CLSTACK (323)

Size	Price
6x6 on 8x8	\$61.99
5x7 on 8x10	\$57.99
8x8 on 12x12	\$103.99
4 5x7 on 1 12x24	\$173.99
12x16 on 16x20	\$184.99



Fine Art Metal

Smile Club saves 10%

Fine art metal is printed directly on to metal using our inkjet printers. This allows for a sharper image, that can be printed at 150ppi and allows for true color management. Fine art metal is only available in the sizes listed below.

FINE ART METAL FAM (367)

Size	Price
10x10	\$61.99
12x12	\$89.99
11x14	\$68.99
12x18	\$96.99
16x20	\$143.99
16x24	\$171.99
20x30	\$269.99
24x36	\$388.99



MDF

Smile Club saves 35%

MDF desktop panels, also known as display ready panels, are .25” thick desktop size panels with your image printed directly on the front and an easel built into the panel to stand in either orientation. MDF wall panels are .625” thick with a chamfered black edge and notched keyholes built into the back to hang either way on the wall.

MDFDESK (274)		MDFWALL(263)	
Print Size	MDF Desk	Print Size	MDF Wall
5x7	\$14.99	5x7	\$14.99
6x6	\$14.99	8x8	\$18.99
8x10	\$19.99	8x10	\$22.99
10x10	\$22.99	12x12	\$38.99
Triptych	\$19.99	11x14	\$44.99
		9x18	\$46.99
		16x20	\$86.99
		20x24	\$167.99



MDF Desk Panel

Gallery Blocks

Smile Club saves 10%

Printed on Epson smooth fine art paper and mounted on 1.5 inch thick black, super lightweight blocks, Gallery Blocks are affordable, beautiful and versatile. Choose from bleed the image right to the edge of the block or extending past the edge with a deckled edge treatment to the paper.



Gallery Block Deckled Edge

GALLERY BLOCKS

GBLOCK (435)

Size	Bleed	Deckled
7.5 x 9.5	\$29.99	\$34.99
10.5 x 13.5	\$39.99	\$49.99
11.5 x 17.5	\$49.99	\$59.99
15.5 x 19.5	\$69.00	\$79.99

Wood Panels

Smile Club saves 10%

5/8” thick maple panels with a clear matte coating, and notched keyholes on both long and short sides of the back for hanging in any direction. Wood panels are unique and fit earthy settings. The printed image is not opaque; it shows some wood grain which is part of the charm of the substrate. We recommend leaving a border (shown below, right) to highlight, rather than hide, this feature.



WOOD PANELS

WOOD (325)

Size	Price
5x7	\$15.99
8x8	\$28.99
8x10	\$35.99
10x10	\$44.99
11x14	\$50.99
16x20	\$105.99
20x24	\$157.99
other sizes	45¢ sq/in <100 33¢ sq/in >100

Acrylic

Smile Club saves 10%

FACE MOUNTED ACRYLIC

ACRYLIC (313)

Size	Price (cleat mount)
8x10	\$70.99
11x14	\$96.99
12x18	\$135.99
16x20	\$172.99
16x24	\$206.99
10x40	\$251.99
20x20	\$251.99
20x24	\$225.05
20x30	\$326.29
24x30	\$366.99
24x36	\$431.99
30x40	\$479.99
32x48	\$613.99
40x60	\$959.99

Face mounted acrylic panels are high quality inkjet prints adhered behind a 1/4” thick acrylic, backed with black DiBond for durability and a clean look. Prices include french cleat to hang, but we can substitute a set of four stainless post standoffs for an additional \$19.99. Call store to inquire about our complete list of sizes, these are set and cannot be customized to in-between sizes.



Color Film Processing

Smile Club saves 35%

We develop most film sizes and types including 35mm, APS, medium format, large format, the list goes on! Prices below are for APS, 35mm and 120 color negative film developing, scanning and printing at time of developing. Prints and scans from already processed film are listed on page 20. Scans can be delivered on a CD, customer provided USB or emailed. Prints are glossy or matte 4x6 prints, sets of either 24 or 36. Smile club members either save 35% on service or get a second set free.

C41 Color Negative Developing	Code	Price	Club	Film Type	Code	Price	Club
35MM DEV ONLY	C35	\$10.00	\$6.50	120 DEV ONLY	C120	\$10.00	\$6.50
35MM DEV & SCAN	C35LO	\$16.16	\$10.50	120 DEV & SCAN	C120LO	\$16.16	\$10.50
35MM DEV & HI-RES	C35HI	\$23.85	\$15.50	120 DEV & HI-RES	C120HI	\$23.85	\$15.50
35MM DEV & 24 EXP	C3524	\$17.68	\$11.49	120 DEV & PRINT	C120P	\$17.68	\$11.49
35MM DEV & 36 EXP	C3536	\$21.52	\$13.99	120 DEV, SCAN & PRINT	C120LOP	\$21.52	\$15.50
35MM DEV, SCAN & PRINT 24 EXP	C35LO24	\$23.84	\$15.50	120 DEV, HI-RES & PRINT	C120HIP	\$23.84	\$20.49
35MM DEV, SCAN & PRINT 36 EXP	C35LO36	\$27.68	\$17.99	SCAN 1024x2048 3-4MB, 1MB on disk good for 4x6 and screen \$4.00 (member)	24EXP flat rate only 32¢ / print (non-member) \$4.99 / set (member)		
35MM DEV, HI-RES & PRINT 24 EXP	C35HI24	\$31.53	\$20.49		36EXP flat rate only 32¢ / print (non-member) \$7.49 / set (member)		
35MM DEV, HI-RES & PRINT 36 EXP	C35HI36	\$35.37	\$22.99		HI-RES 2000x3000 10-16MB, 2-4MB on disk		

C41 2/1 & Doubles D&P

No discount

2/1 D&P <i>club members</i>	Code	Price	2/1 D&P Doubles + Scan <i>club members</i>	Code	Price
C41 35MM DEV & 24 EXP 2/1	C352421	\$17.68	35MM DEV, SCAN & 24 EXP 2/1	C35LO2421	\$23.84
C41 35MM DEV & 36 EXP 2/1	C353621	\$21.52	35MM DEV, HI-RES & 36 EXP 2/1	C35HI3621	\$31.53
Doubles D&P <i>non-club members</i>			Doubles D&P + Scan <i>non-club members</i>		
C41 35MM DEV & 24 EXP DOUBLES	C3524DB	\$24.16	35MM DEV, SCAN & 24 EXP DOUBLES	C35LO24DB	\$30.32
C41 35MM DEV & 36 EXP DOUBLES	C3536DB	\$37.40	35MM DEV, HI-RES & 36 EXP DOUBLES	C35HI36DB	\$38.01



B&W Film Processing

Smile Club saves 35%

Black and white film from 35mm, 120, 220 and 4x5/5x7 sheet film formats are all processed in house, Monday-Friday, using a batch hand process of T-Max RS. Special processes like HC-110, Ilfosol, and HIE processing are available upon request, allow for additional time and surcharge of \$25 for setup plus additonal \$5 per roll.

35mm B&W Film Developing	Code	Price	Club	120 B&W Film	Code	Price	Club
35MM DEV ONLY	BW35	\$10.00	\$6.50	120 DEV ONLY	BW120	\$10.00	\$6.50
35MM DEV & SCAN	BW35LO	\$16.16	\$10.50	120 DEV & SCAN	BW120LO	\$16.16	\$10.50
35MM DEV & HI-RES	BW35HI	\$23.85	\$15.50	120 DEV & HI-RES	BW120HI	\$23.85	\$15.50
35MM DEV & 24 EXP	BW3524	\$21.52	\$13.99	120 DEV & PRINT	BW120P	\$17.68	\$11.49
35MM DEV & 36 EXP	BW3536	\$27.28	\$17.73	120 DEV, SCAN & PRINT	BW120LOP	\$23.84	\$15.50
35MM DEV, SCAN & PRINT 24 EXP	BW35LO24	\$27.68	\$17.99	120 DEV, HI-RES & PRINT	BW120HIP	\$31.53	\$20.49
35MM DEV, SCAN & PRINT 36 EXP	BW35LO36	\$33.44	\$21.74	SCAN 1024x2048 3-4MB, 1MB on disk good for 4x6 and screen \$4.00 (member)	24EXP flat rate only 48¢ / print (non-member) \$7.49 / set (member)		
35MM DEV, HI-RES & PRINT 24 EXP	BW35HI24	\$35.37	\$22.99		36EXP flat rate only 48¢ / print (non-member) \$11.23 / set (member)		
35MM DEV, HI-RES & PRINT 36 EXP	BW35HI36	\$41.13	\$26.73		HI-RES 2000x3000 10-16MB, 2-4MB on disk		

B&W 2/1 & Doubles D&P

No discount

2/1 D&P <i>club members</i>	Code	Price	2/1 D&P / Doubles + Scan <i>club members</i>	Code	Price
B&W 35MM DEV & 24 EXP 2/1	BW352421	\$21.52	35MM DEV, SCAN & 24 EXP 2/1	BW35LO2421	\$27.68
B&W 35MM DEV & 36 EXP 2/1	BW353621	\$27.28	35MM DEV, HI-RES & 36 EXP 2/1	BW35HI3621	\$33.44
Doubles D&P <i>non-club members</i>			Doubles D&P + Scan <i>non-club members</i>		
B&W 35MM DEV & 24 EXP DOUBLES	BW3524DB	\$30.64	35MM DEV, SCAN & 24 EXP DOUBLES	BW35LO24DB	\$36.80
B&W 35MM DEV & 36 EXP DOUBLES	BW3536DB	\$40.96	35MM DEV, HI-RES & 36 EXP DOUBLES	BW35HI36DB	\$54.81



E6 Slide Film

Smile Club Saves 10%!

We process 35mm, 120 and 4x5/5x7 E6 sheet film in our Kreonite dip-and-dunk processor twice a week. Turn times may vary. Slides are delivered mounted and in archival print files. Turn around time is longer for California locations.

Service	Code	Price	Club
E6 35MM DEV ONLY	E635	\$12.00	\$10.80
E6 35MM DEV & SCAN	E635LO	\$18.16	\$16.34
E6 35MM DEV & HI-RES	E635HI	\$25.85	\$23.27
E6 120 DEV ONLY	E6120	\$12.00	\$10.80
E6 120 DEV & SCAN	E6120LO	\$18.16	\$16.34
E6 120 DEV & HI-RES	E6120HI	\$25.85	\$23.27
E6 SHEET FILM	SHEETE6	\$5.00	\$4.50
E6 DEV, HI-RES & PRINT	E6HIP	\$33.53	\$30.18



Legacy & Additional Services

We offer a variety of additional services for film processing such as pre-washing contaminated film before developing, working with partners to process rare film types and digital contact sheets. Legacy film includes Kodachrome, C-22, Kodak Disc Film, Seattle Film Works. K-12, K-14 & C-22 are developed as B&W.

Odd Format Film Scanning

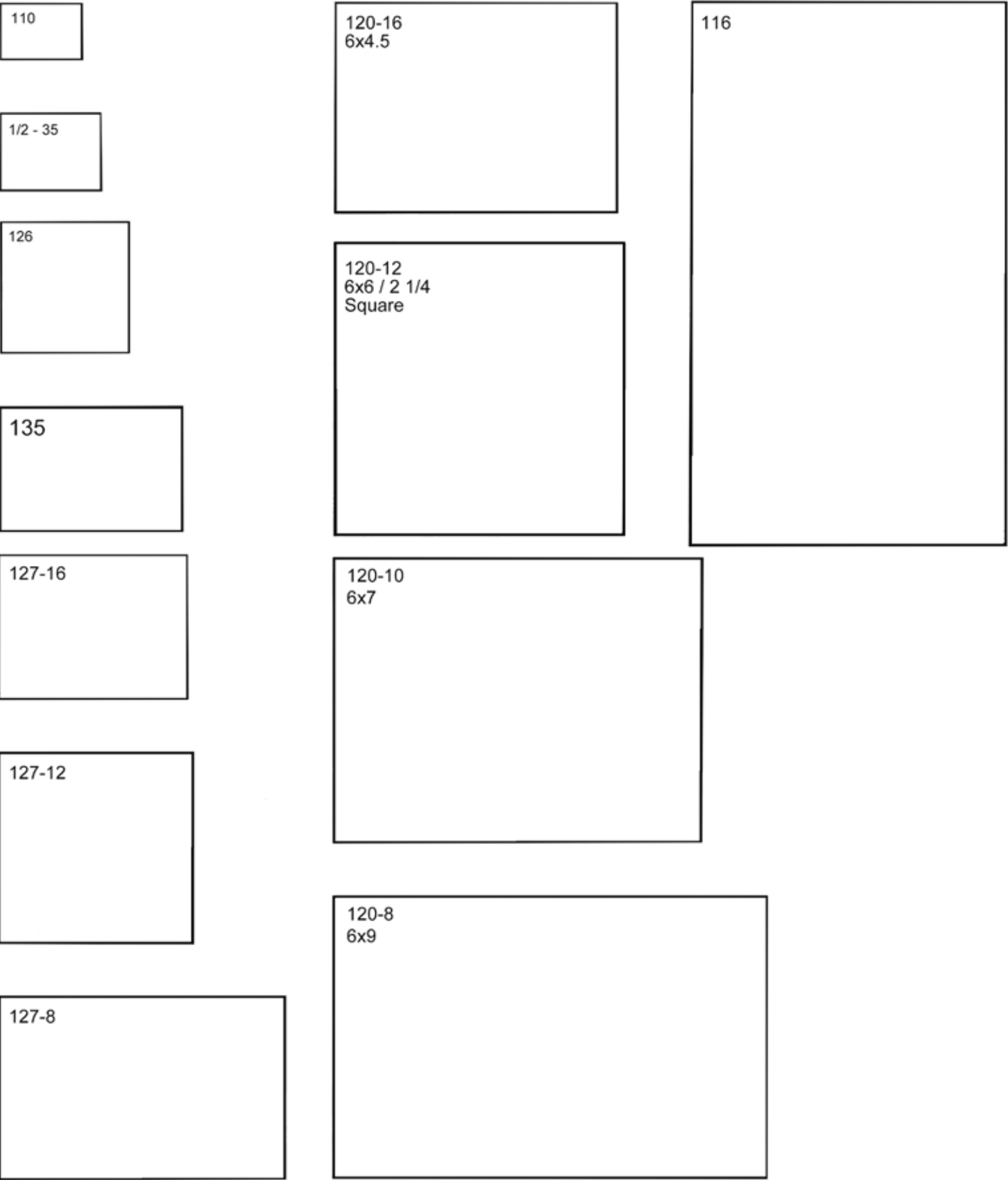
110, 126 & 127 formats

Code	Price
BFS (280)	\$3.00 per frame

These formats must be digitized prior to printing. Scans are rough cropped, for better resolution and cropping see high resolution film scanning.

Service	Code	Price
Legacy Film Dev, Scan & Print	SPECIAL	\$24.99 + 80¢ print
Disc Film Dev, Scan & Print	SPECIAL	\$24.99 + \$3.00/ frame
Legacy Film - Unexposed Roll		\$14.99
Push or Pull processing	PUSH	\$2.00 per roll
Roll Film Wash	WASH	\$11.99 per roll
Loose Negative Film Wash	WASH	\$4.99 per strip
Digital Contact Sheet	DCS	\$9.99

Film Frame Size Guide



Restorations

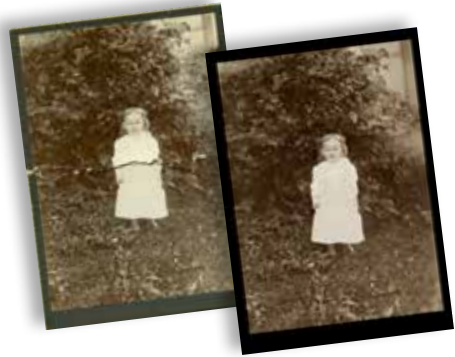
Smile Club saves 10%

Restoration work is completed digitally using Photoshop. **We cannot repair damage to your original, physical photo.**
Prices do not include scanning or printing.



Light | \$40 HFFR (439)

This category includes light damage limited to non-detail areas, and removal of minimal spots or stains in a small section of the photograph.



Medium | \$64 HFFR (439)

Removal of spots and scratches affecting but not obliterating subject will be repaired. Also includes minimal stains throughout the entire photo.



Medium-Heavy | \$110 HFFR (439)

Restorations falling between the medium and heavy categories include repair of all photo damage and enhancement of colors. Tears in photo affecting but not through important facial features will be repaired.



Heavy | \$132 HFFR (439)

Heavily stained, spotted, or scratched photos. Repair extensive damage to entire photograph, including detailed areas such as faces. This category also includes any photo with intricate or multiple patterns.

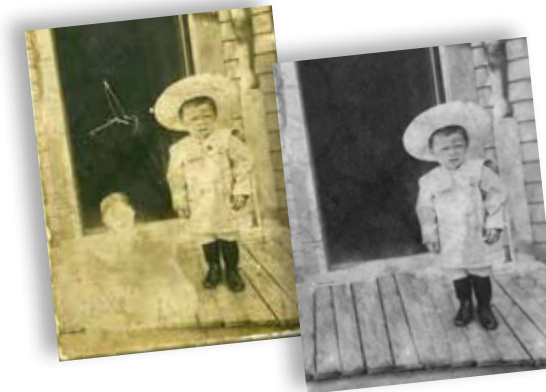
Restorations

Smile Club saves 10%



Group-Heavy | \$132 HFFR (439)

Extensive damage to detailed areas of photograph including 2 or more people. Heavily stained, creased, marked or taped photos fall into this category.



Add or Remove a Person | \$64 HFFR (439)

Combine images to make one family photo, or remove unwanted guests from a group picture. Remove photo bombers or strangers in the background!



Change Background | \$64 HFFR (439)

Some photos are almost perfect, but ruined by distractions or clutter in the image. Just choose a background and we will replace the background of your photograph!



Colorization | \$64 HFFR (439)

We can revitalize black and white or discolored photographs. Bring your photo to us for an expert consultation. Some photos are subject to restoration or retouch work prior to coloring.

Scanning Film

Smile Club saves 10%

For every type of film or need, we have a scanning solution. Whether it is economy for digitizing large collections of film or quality for reproducing a single image for an epic metal print or large photographic print, or odd and unusual formats. If you aren't sure what you need, ask us, we're here to help!

SLIDE CAROUSEL PRE-LOADS

80SLIDE (344)		
Quantity	Resolution	Price
up to 80 mounted slides	3600 x 2400 26 MB .jpg	\$80.00

35mm mounted slides, buy the box, you load 'em, we scan 'em! To get this special price, carousel must be loaded properly for scanning, see insert in box for details.

Price includes scanning, CD and sleeving slides into archival print files.



35mm or 120 film strips, APS cartridges and 35mm slides can all be bulk scanned on our lab scanner, yielding a 2048 x 3072 @ 72 ppi 18mb scan.

BULK FILM SCANNING

BFS (280)	
Quantity	Price
1-24	\$3.00
25-74	\$2.00
75-149	\$1.75
150-299	\$1.50
300-999	\$1.25
1000+	\$1.00
APS or uncut 35mm roll	\$12.99 ea
or 120 roll	

CUSTOM FILM SCANNING

FS (300)	
Resolution	Price
up to 5 MB	\$7.00
6 to 10 MB	\$10.00
11 to 25 MB	\$15.00
26 to 50 MB	\$22.00
51 to 100 MB	\$35.00
101 to 200 MB	\$45.00
201 to 300 MB	\$55.00
301 + MB	\$75.00

Any format, any output resolution, our flatbed film scans include color adjustments, precise cropping and dust and scratch removal.

Scanning Prints

Smile Club saves 10%

Our standard resolution for scanning photos is 300 dpi; our high resolution scans, depending on the size of the photograph, starts at 600 dpi. Basic edits are included in scanning services: color correcting, brightening/darkening,

ALBUM PAGE SCANS

Service	Code	Price
Whole Page	PAGESCAN (328)	\$2.49 ea
Page Split	SPLITSCAN (272)	\$4.99 ea

Got photo albums? Can't take them apart to have bulk scanning done? We can scan albums and scrapbooks up to 12x17 in size, and either return a file of just the entire page, or use our software to magically extract each image. Scans are the dimension of image @ 300 ppi, 600ppi is available for an additional 50¢ per page.



Loose, unmounted photos between 2x2 and 8.5 x 11 can be bulk scanned. Any copyrighted images will be omitted! Scan will be size of image @ 300 dpi, returned on a CD.

Maximum size is 12x18 original print, larger images must have copy work shot. Images will be precisely cropped, color corrected and light dust touch ups.

BULK PRINT SCANNING

BPS (438)	
Quantity	Price
1-49	99¢
50-99	60¢
100-249	35¢
250-499	25¢
500-999	20¢
1000+	15¢

CUSTOM PRINT SCANNING

PS (237)	
Resolution	Price
up to 5 MB	\$5.00
6 to 10 MB	\$8.00
11 to 25 MB	\$12.00
26 to 50 MB	\$22.00
51 to 100 MB	\$30.00
101 to 200 MB	\$40.00
201 to 300 MB	\$50.00
301 + MB	\$70.00

ADDITIONAL SERVICES

Size	Code	Price
Save as .TIFF	TIFFSCAN (492)	25¢ per image
600 DPI	600D (426)	5¢ per image
Proofbook	PROOFBOOK (478)	\$29.99
Collating	COLLATE (351)	5¢ per print

DIGITAL COPY WORK

DCW (416)

For artwork up to 24X30 that doesn't fit on a scanner, we can shoot a high resolution image for \$35.00 each.

The Gather Box

Smile Club saves 10%

The Gather Box is a useful tool for organizing and archiving large quantities of loose photographs economically. Follow the steps below to begin the process.

STEP 1: GATHER

Purchase the box for yourself or a loved one. Inside, find instructions and tips to guide you through the sorting and gathering process.

Gather Box | \$199

GB (317)

- Fit as many prints in our box as you can, ~1500 4x6 prints. Price includes scanning to CD or DVD at 300DPI.



STEP 2: FILL THE BOX

Fill it with memorabilia and photos, then drop it off at our store. If you have things that won't fit in the box, bring them along so we can address those items separately.

Gather Box Gold | \$299

GBG (414)

STEP 3: MAGIC!

Return to find that everything in your box has been magically transformed into digital format. Now you can relax in confidence knowing those precious relics from the past are now protected and easily accessible

- Fit as many prints in our box as you can, ~1500 4x6 prints. Price includes scanning to CD or DVD, in addition:
- Prints are scanned at 600 dpi
- Includes a printed and bound proof book of all the files for easy referencing.

Additional Services

COLLATE (351)

- Prints can be scanned in order for 5¢ add'l per print
- Folders can be created on disc for groups of photos for \$4.00 each.

Design Work

Smile Club saves 10%

We offer custom design work — below is a basic description of each service we provide. For an accurate quote, clients will need to consult our team. We also offer consultation with our graphic designer for more in-depth business projects.

Media Transfer

MEDIA (440)

\$5 per item on CDs, Floppy disks, 3 ½ & 5 ¼ disks, old formats. Flash memory such as CF, SD and USB is 50¢ per every 1GB of transfer, \$10 minimum. Phones are \$1 per every 1GB, \$20 minimum. Files are transferred to customer provided USB, and/or: Transfer to CD - add \$4.99 (MCD) Transfer to DVD - add \$9.99 (MDVD)

Photoshop Retouch | \$20.00

MCR (448)

Includes Photoshop work that takes approximately 15 minutes. The following are examples of retouches: minimal cosmetic clean-up, obvious stray hairs and lint on clothes. Pricing does not include the cost of scanning, or final print.

Design Fee | \$80/hour

DDS (324)

Design fees are meant for extensive Photoshop or other set-up work, such as creating marketing or branding products. Proofing is via email or visit in store before print.

Digital Image Recovery

DIR (398)

We'll recover or attempt to recover corrupt files, flash drives and CDs. No charge for unsuccessful recovery.

4GB	\$44.00	32GB	\$84.00
8GB	\$54.00	64GB	\$155.00
16GB	\$67.00		

What Size Scan Do I Need?

The chart below is to help you determine if you need a custom scan for your print, and if so, how big? Some print processes, such as photographic lab prints and dye-sublimation metal are printed at 300 DPI. Others, such as inkjet, giclee, and canvas are printed at 150 DPI. Screen resolution, for viewing on a TV, computer or internet use is at 72 DPI and almost anything looks good on screen. With that in mind, screens are deceiving. Just because it looks good on screen, doesn't mean it will translate to print.

Print Size	300 DPI		150 DPI	
	Pixels	File Size	Pixels	File Size
4x6	1200x1800	6.18 MB	600x900	1.54 MB
5x7	1500x2000	9.01	750x1050	2.25
8x10	2400x3000	20.6	1200x1500	5.15
11x14	3300x4200	39.7	1650x2100	9.91
12x18	3600x5400	55.6	1800x2700	13.90
16x20	4800x6000	109.9	2400x3000	20.60
20x24	6000x7200	164.8	3000x3600	30.90
24x30	7200x9000	247.2	3600x4500	46.30
30x40	9000x12000	412.0	4500x6000	77.20
40x60			6000x9000	206
54x96			8100x14400	444.9

We can help with (but are not limited to!) the following projects:

Collage wall décor and photo collections | Custom holiday greeting card design
Photographic editing and design | Event or party signage, posters and favors
Personalized stationery | Custom photo book design | Graphic design
Monogram creation | Wedding, Graduation, Birth announcement stationery



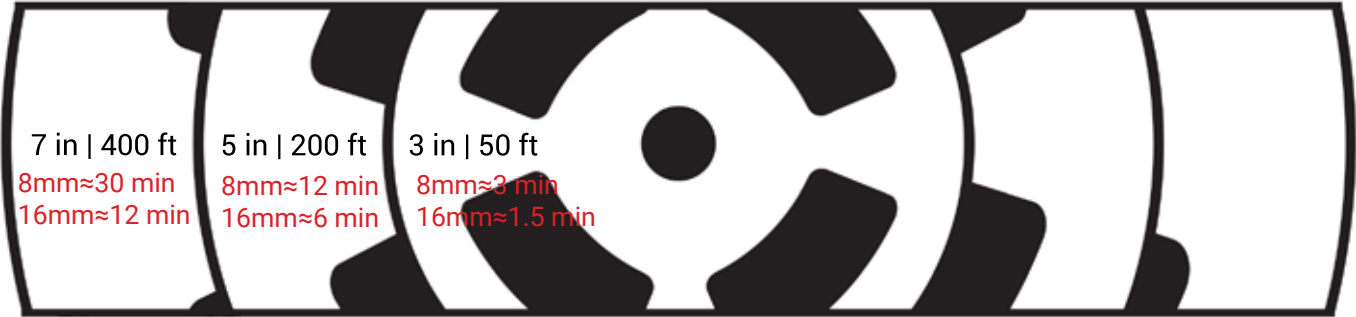
Reel Film Transfers

Smile Club saves 10%

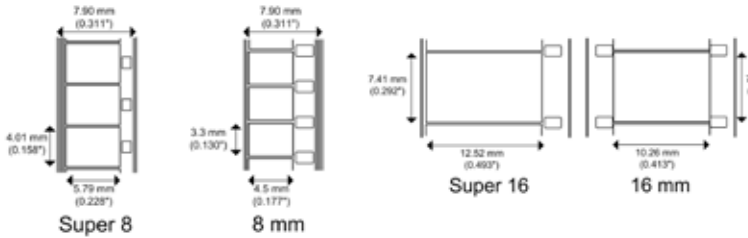
Reel film is transferred in real time to an .mp4 or .mov file, transferred to customer provided USB or Mike’s Camera USB drive. DVD and Blu-Ray are extra, and will hold up to 2 hours of transfer time per disc.

Reels

8mm & Super 8mm				Deliverables	Item	Price	Code	Item	Price	Code
HD	no sound	35¢ /ft	HDT8 (282)	.mp4 included	DVD	\$10.00	DV (443)	BR-D	\$15.00	BR (496)
	w/sound	40¢ /ft								
SD	no sound	25¢ /ft	T8 (455)	.mp4 included	DVD	\$10.00	DV (443)	BR-D	\$15.00	BR (496)
	w/sound	35¢ /ft								
16mm					Item	Price	Code	Item	Price	Code
HD	no sound	40¢ /ft	HDT16 (472)	.mp4 included	DVD	\$10.00	DV (443)	BR-D	\$15.00	BR (496)
	w/sound	50¢ /ft								
SD	no sound	30¢ /ft	T16 (472)	.mp4 included	DVD	\$10.00	DV (443)	BR-D	\$15.00	BR (496)
	w/sound	40¢ /ft								



Use the reel diagram to measure the approximate length of your reel.



Additional Services		
Custom Chaptering	\$30 setup + \$5 ea chapter	CC (287)
Title Card	\$30 setup+ \$5 ea chapter	TITLE (461)

Custom chaptering and title cards can be added to any project. The \$30 setup is only charged once per project. Custom chapter points include a spot on the menu screen that points to a defined place in the video when the find button is pressed. Title cards are static screens with text.

A/V Transfers

Smile Club saves 10%

Video tapes and audio formats can be converted and digitized, in real time. Video tapes are always transferred 1 tape to 1 DVD unless combine tapes service is added. Video can be encoded to editable files for an additional service.

Tapes

Tapes to DVD		
Transfer	\$35 1st hr \$15 ea /addt'l hr	DVD (309)
Encode	\$15 /hr \$15 minimum	ENCODE (457)
PAL to NTSC	\$20 per tape + transfer	CONV (413)
Combine Tapes	\$30 1st 2 hrs + \$5 ea /addt'l hr	EDIT (392)
Tape Repair	\$10 per tape	REPAIR (407)

Audio		
Transfer	\$25 1st hr \$15 ea /addt'l hr	AUDIO (360)
Encode	\$15 /hr \$15 minimum	ENCODE (457)
Track Separation	\$1 per track	AEDIT (386)
Noise Filtering	\$10 per source	AEDIT (386)

ABOUT OUR VHS/VHS-C/CASSETTE

- Video tapes are transferred 1 tape to 1 DVD. DVDs can hold up to 2 hours at quality setting. We can combine tapes if they fit under two hours, see the Combine Tapes service and charge.
- Video formats include VHS, VHS-C, Hi-8, Digital 8, HDV, MiniDV, Betamax, Betacam & U-Matic.
- Overseas video formats can be converted to NTSC (PAL, SECAM) or vice-versa. Cost of the transfer + \$20 per tape.
- Audio LPs can be transferred to CD as an archival service only. No duplication can be made.
- Audio formats that can be transferred include cassette, LP, DAT, reel-to-reel, mini-cassette and micro-cassette.
- All projects are transferred directly to a playable DVD. In order to edit a transfer, or post to social media, store on a hard drive or USB drive, the playable DVD must be encoded to file.
- Audio is transferred to CD, but can be encoded as well.



Digital Video

Smile Club saves 10%

Digital Video Projects

DVD Slideshows

Slideshow	\$90 up to 75 images 35¢ ea add'l image	DVDSLIDE (464)
Legacy Slideshow	\$180 up to 150 images 45¢ ea add'l image	LS (228)

Custom Editing

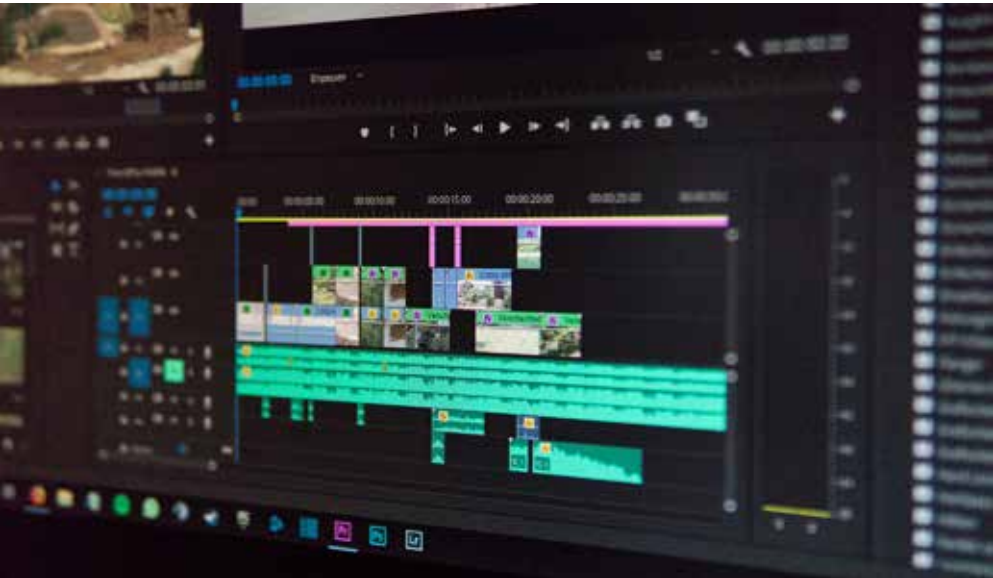
Custom Editing	\$80 per hour by appointment	CEDIT (375)
Footage Preview	\$20 per hour by appointment	CEDIT (375)

Digital Video Services

Digital Camera Transfer	\$30 1st hour \$15 ea add'l hour	DCT (458)
Still Frame Grab	\$80 per hour by appointment	CEDIT (375)
DVD	\$10	DV (443)
Blu-Ray	\$15	BR (496)

ABOUT OUR DIGITAL VIDEO SERVICES:

- Slideshows include one DVD copy and is ready to play in a DVD player.
- Slideshows include up to 75 images, up to 3 songs, play 5-8 minutes.
- Legacy Slideshows include up to 150 images, up to 6 songs, 15-20 minutes play time. Legacy slideshows also include full color DVD printing, poly mailer packaging, cropping & color correction of images.
- Due to copyright laws, music must be provided by the client.
- Still frame grabs are screen captures, put to .JPG file on a CD.
- We will attempt to have any slideshows for memorial service done within 24 hours, depending on complexity of project.
- Custom editing is by appointment, with a technician, for editing any footage. Transfer fees will apply for any capture time.
- Footage previews are by appointment to view footage on our equipment.
- Digital camera transfers are for footage from hard drive recording cameras, mini-dvd cams and are transferred to an .mp4 or .mov file. DVD or Blu-Ray is available on request.



Disc Duplication

Smile Club saves 10%

CDs and DVDs are optical media; they are burned with a laser onto a disc. This is an imperfect process and sometimes yields a product that will play on one player but not another. For professional distribution of 1,000 discs or more we recommend using our replication service. This will produce a glass master that is then pressed for economical and reliable distribution.

Mike's Camera branded discs will be used for projects unless printing either black on silver disc or full color on white disc is specified. Add \$10 per project to set up.

CD DUPLICATION CDD (408)			DVD DUPLICATION DVD (298)			BLU-RAY BRD (231)	
Quantity	Black/Silver	Full Color	Black/Silver	Full Color	DL/ Gold	Mike's	BR-D
1-9	\$4.50	\$5.00	\$5.50	\$6.00	\$9.00	\$5.00	\$10.00
10-24	\$3.50	\$4.00	\$4.50	\$5.00	\$8.00	\$4.00	\$9.00
25-49	\$2.50	\$3.00	\$4.00	\$4.50	\$8.00	\$3.50	\$9.00
50-99	\$2.00	\$2.50	\$3.50	\$4.00	\$7.50	\$3.00	\$8.50
100-249	\$1.70	\$2.00	\$3.00	\$3.50	\$7.50	\$2.50	\$8.50
250-499	\$1.50	\$1.75	\$2.50	\$3.00	\$6.50	\$2.00	\$7.50
500-749	\$1.25	\$1.50	\$2.00	\$2.50	\$6.50	\$1.75	\$7.50
750-999	\$1.15	\$1.35	\$1.75	\$2.00	\$5.50	\$1.50	\$6.50
1000+	\$1.10	\$1.25	\$1.50	\$1.75	\$5.00	\$1.25	\$6.00

REPLICATION \$65 setup + price per unit			PACKAGING PACKAGE (423)		
Quantity	CD	DVD	Item	Price ea	Clamshell
500-999	\$2.12	\$30.00	DVD Case	55¢	Super Jewel Box
1000-1999	\$1.08	\$25.00	2 DVD Case	75¢	Jewel Case
2000-2999	98¢	\$23.00	3 DVD Case	95¢	Jewel Case Clear
3000-4999	88¢	\$21.00	4 DVD Case	\$1.15	Jewel Case 2-disc
5000-9999	83¢	\$19.00	Slim DVD Case	60¢	Shrink Wrap Case
10000+	80¢	\$17.00	Poly Mailer	40¢	Shrink Bundle

PACKAGING INSERTS PACKAGE (423)						
Quantity	DVD Case Slipsheet	Jewel Case 1 Panel	Jewel Case 2 Panel	Jewel Case 4 Panel	Tray Liner 1 Sided	Tray Liner 2 Sided
1-9	95¢	77¢	95¢	\$1.25	88¢	\$1.00
10-49	88¢	72¢	88¢	\$1.15	77¢	95¢
50-99	77¢	65¢	77¢	\$1.05	72¢	88¢
100-499	72¢	60¢	72¢	95¢	65¢	77¢
500-999	65¢	55¢	65¢	88¢	60¢	72¢
1000+	60¢	50¢	60¢	77¢	55¢	65¢

Photo Books

Smile Club saves 10%

Photo books are available online at [mikescamera.com](#). Books comes in a multitude of colors, sizes and styles. Photo upload is available through your computer, Facebook, Instagram, Dropbox, or Cloud storage. A variety of layouts are provided online and at our kiosk in-store. Layflat or flush-mounted albums are printed on real glossy photographic paper and bound to

PHOTO BOOKS
PHOTOBOOKS (497)

CUSTOM HARDCOVER BOOKS

- 20-60 pages / 30 sheet limit
- 99¢/page after 20 pages
- Pages on uncoated 100# text
- Glossy laminate hardcover wrap with your design

6x8	8x8	8.5x11	8x12	12x12
\$24.99	\$29.99	\$34.99	\$39.99	\$49.99

Staple Binding

- square or Portrait Letter
- 1st page is cover
- Spreads are in sets of 4

Style	8.5x11	8x8
20 Pages	\$24.99	\$14.99

Classic Binding

- linen cloth & leather
- keyhole window on cover
- color choices
- 20-40 pages / 20 sheet limit
- 99¢/page after 20 pages
- Pages on uncoated 100# text

6x8	8x8	8.5x11	12x12
\$14.99	\$19.99	\$24.99	\$39.99
<i>black linen</i>	<i>black, navy</i>	<i>black linen, leather,</i>	<i>black linen</i>
	<i>or red linen</i>	<i>navy, red or taupe</i>	

Layflat Binding

- perfect layflat book binding
- layouts spanning both pages
- 16 pages / 32 page limit

Size	Glossy	Silk/Metallic	addt'l pg
10x10	\$99.99	\$119.99	\$1.99 ea
12x12	\$149.99	\$169.99	\$1.99 ea



Linen Keyhole



Custom Hardcover



Staple Bound



Greeting Cards

Smile Club saves 10%

All card orders come with envelopes. **Templates and designs are offered online at [mikescamera.com](#) and at our photo kiosks in the store.** Custom sizes, shapes, folds and materials are available, consult our store team for options. Cards must be ordered in a minimum quantity of 12. Matte is our standard option for our photo cards, and we use a signature velvet 120# cover for our press cards.

	4x8 & 5x7 Slimline Photo Paper Cards		2-Sided Flat	5x5/5x7 Folding	Accordian Fold	Die-Cut Card	
QUANTITY	4SLIM (209)	5SLIM (294)	5STAT (315)	5FOLD (432)	5ACC (357)	DIECUT (495)	
12-24	99¢	\$1.29	\$1.99	\$2.49	\$2.99	\$3.49	
25-48	89¢	\$1.16	\$1.79	\$2.24	\$2.69	\$3.14	SAVE 10%
49-96	84¢	\$1.10	\$1.69	\$2.12	\$2.54	\$2.97	SAVE 15%
97-192	79¢	\$1.03	\$1.59	\$1.99	\$2.39	\$2.79	SAVE 20%
193-384	74¢	97¢	\$1.49	\$1.87	\$2.24	\$2.62	SAVE 25%
385+	69¢	90¢	\$1.39	\$1.74	\$2.09	\$2.44	SAVE 30%



	Included	add 15¢ each	CARDMISC (259)	add 29¢ each
CARDSTOCK	PHOTO PAPER / 120#C	LINEN, ENVIRONMENT RECYCLED		METALLIC, STIPPLE
ENVELOPE	SILVER FOIL ENVELOPE	SOLID COLORS, LINEN		METALLIC



Calendars

Smile Club saves 10%

Photo Calendars are available online at mikescamera.com and at our photo kiosks in the store. Photo upload is available through your computer, Facebook, Instagram, Dropbox, or Cloud storage. A variety of layouts are provided online.

	8.5x11	12x12	Desktop	Clip-It	Year in Photographs
QUANTITY	KIOSK11 (229)	KIOSK12 (208)	SPEC (248)	SPEC (248)	YIP (431)
1st	\$19.99	\$24.99	\$14.99	\$14.99	\$29.99
2-25	\$19.99	\$24.99	\$14.99	\$14.99	\$19.99
26-50	\$16.99	\$20.99	\$13.99	\$10.99	\$16.99
51-100	\$15.99	\$19.99	\$12.99	\$8.99	\$15.99
101-250	\$14.99	\$18.99	\$11.99	\$7.99	\$14.99
251+	\$13.99	\$17.99	\$10.99	\$7.99	\$13.99

The Year in Photographs Calendar is printed one-side on 11x14 photo paper and is only available in-store at the counter. It is simply either white text on black background or black text on white background with one picture per page. All other calendars must be ordered online or at kiosk. Saddle stapled 8.5 x 11 calendars are available upon request.



Clip-It Calendar



8.5 x 11 Wall Calendar



5 x 10 Desktop Calendar

Business Cards

Smile Club saves 10%

Business cards come in a minimum order of 100 and are purchased by the set. If you need a custom amount or size let us know. Our standard cardstock is 120# glossy cover. Specialty cardstock is available for an additional upgrade per card. Price is the same for 1 or 2-sided, B&W or color.

BUSINESS CARD SETS		
XEROX (314)		
Quantity	Stock	Price
100	120C Glossy	\$12.00
250		\$27.50
500		\$50.00
1000		\$90.00
100	Classic Linen	\$18.00
250		\$40.00
500		\$75.00
1000		\$130.00
100	16pt Accent Uncoated	\$24.00
250		\$55.00
500		\$95.00
1000		\$170.00
100	White Pearl Metallic	\$28.00
250		\$62.50
500		\$115.00
1000		\$200.00

STOCK UPGRADES	
Cardstock	
120C Glossy	included
Linen	addt'l
16pt Uncoated	addt'l
Pearl Metallic	addt'l



Copies & Flyers

Smile Club saves 10%

Standard flyer and color copy sizes range from 8.5x11 to 12x18. We offer 8.5x11 both on simple bond copy paper as well as 100# glossy text. Call for custom sizes. \$30 setup for non-standard sizes.

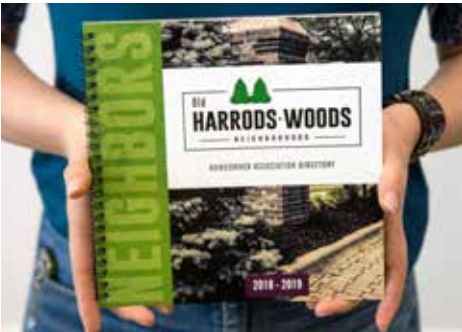
COPIES & FLYERS

XEROX (314)

Size	Quantity	Attribute	Price	Size	Quantity	Attribute	Price
8.5x11	100	1-sided copy paper	\$67.00	11x17	100	1-sided glossy	\$157.00
8.5x11	250		\$150.00	11x17	250		\$352.50
8.5x11	500		\$270.00	11x17	500		\$635.00
8.5x11	100	2-sided copy paper	\$122.00	11x17	100	2-sided glossy	\$291.00
8.5x11	250		\$272.50	11x17	250		\$655.00
8.5x11	500		\$490.00	11x17	500		\$1,180.00
8.5x11	100	1-sided glossy	\$85.00	12x18	100	1-sided glossy	\$190.00
8.5x11	250		\$190.00	12x18	250		\$427.50
8.5x11	500		\$345.00	12x18	500		\$770.00
8.5x11	100	2-sided glossy	\$158.00	12x18	100	2-sided glossy	\$354.00
8.5x11	250		\$355.00	12x18	250		\$797.50
8.5x11	500		\$640.00	12x18	500		\$1,435.00



Letterhead & Copies



Custom Binding Projects



Postcards

Brochures

Smile Club saves 10%

Here are just some of the things we can print on demand. Don't see what you need? Ask one of our team members. We can press print virtually anything. Trifold and brochures are printed on 100# glossy test, rackcards on 80# glossy cover.

PROMOTIONAL PRINTING

XEROX (314)

Size	Quantity	Attribute	Price	Size	Quantity	Attribute	Price
8.5x11	100	Trifold 2-sided	\$171.00	5.5x8.5	10	Comp Card (Z-Card)	\$25.00
8.5x11	250		\$385.00	5.5x8.5	25		\$56.25
8.5x11	500		\$695.00	5.5x8.5	50		\$101.50
3.6x8.5	100	Rackcard 2-sided	\$75.00	5.5x8.5	100		\$182.00
3.6x8.5	250		\$170.00	8.5x11	10	Headshot	\$30.00
3.6x8.5	500		\$305.00	8.5x11	25		\$67.50
3.6x8.5	1000		\$550.00	8.5x11	50		\$121.50
9x12	10	Presentation Folder	\$18.00	8.5x11	100		\$219.00
6x11	100	Postcards	\$195.00	1x2.625	30	Address Labels	\$5.00
3.75x8.5	100	Table Tent	\$196.00	5.5x8.5	50	50 page pad	\$287.50
3.75x8.5	250		\$417.50	5.5x8.5	50	100 page pad	\$330.00
3.75x8.5	500		\$750.00	8.5x11	50	100 page pad	\$450.00



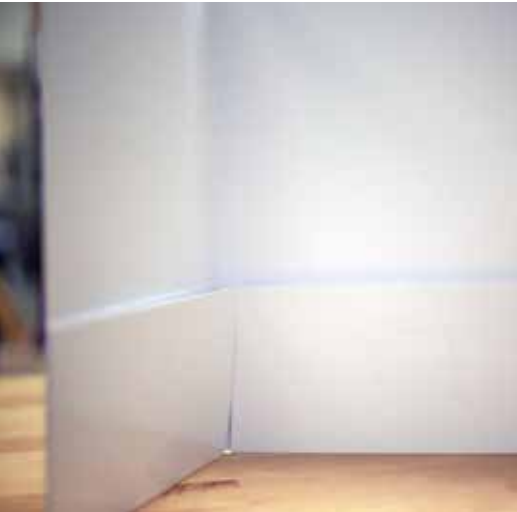
Trifold



Rackcard



Presentation Folder



Presentation Folder Pockets

Promotional Products

Smile Club saves 10%

Prices not listed, this is just an idea of the thousands of items we can obtain wholesale and customized for your business. From namebadges, to pens, stickers, USB drives, bags, fun giveaways like toy animals, power packs, laterns and more! Ask our B2B sales representative for ideas or ask us for a quote on your next purchase.

PROMOTIONAL PRODUCTS

PROMOS (295)



Sports Balls, Pucks & Stress Balls



Pens



Bottles



Flashlights & Keylights



Plaques



Glasses



Caps & Knitted Items



Convention Totes



Backpacks



Patches

Banners

Smile Club saves 10%

We make banners for any occasion or application. Indoor, outdoor, pull-up banners for events, x-banners for trade show and point-of-purchase as well as vinyl cut and grommets to any size or configuration.



Pull-up banner

FULL COLOR VINYL BANNERS

VINYL (411)

Size	Price
16x20	\$36.00
16x24	\$43.00
20x30	\$52.00
24x36	\$66.00
30x40	\$92.00
30x60	\$125.00
30x72	\$143.00
40x60	\$158.00
40x72	\$163.00
40x84	\$187.00
44x72	\$176.00
44x96	\$235.00
58x96	\$309.00
Grommets	\$2.00 each

• Pull-up and X-banners are adjustable, standing banners. Once a stand is purchased, banners may be switched out with a new banner once your marketing campaign is finished.

• When designing the banner print, leave 2" of extra space at the top & 6" of extra space at the bottom for print install..

BANNER STANDS

Description	Price
X-Banner 24x63	\$89.99
XBS (487)	
Pull-Up Banner 33x77	\$129.99
UPBANNER (483)	



Signs

Smile Club saves 10%

From corrugated plastic yard signs, to real estate signs in frames, as well as using mounted print substrates, metal, acrylic and other media we can make your business stand out!

COROPLAST SIGNS

SIGN (252)

\$12/sign – 24" x 18"

- all signs are 2 sided
- color or black & white
- mounted on corrugated plastic
- stakes are included.

Minimum order of 10.
Other sizes available.



Coroplast Sign

This self adhesive fabric delivers rich colors and superb image quality. Perfect for wall graphics and point-of-purchase displays. Repositionable, easy to install and remove.



Print-N-Stick

PRINT-N-STICK

VINYL (411)

Size	Price
8x10	\$12.00
11x14	\$24.00
12x18	\$33.00
16x20	\$38.00
16x24	\$43.00
20x24	\$43.00
20x30	\$54.00
24x36	\$78.00
per square foot	\$13.00

Vinyl

Smile Club saves 10%

We carry several types of vinyl material to meet your business needs. Contact our business to business specialist for quotes on any job.



Backlit Vinyl

Simple Vinyl

- available in glossy or matte finish
- lasts up to 2 years outdoors without laminate
- lasts up to 4 years outdoors with laminate

Pro Sign Vinyl

- lasts up to 5 years outdoors without laminate
- lasts up to 8 years outdoors with laminate

Wall Vinyl

- lasts for several years
- not intended for outdoor use

Backlit Vinyl

- used to go in front of lights, such as for lightboxes
- slip-in or adhesive is available

Window Perf

- vinyl will need to be printed 1" larger than intended window size



Vinyl Stickers with Laminate



SIGN VINYL

VINYL (411)

Vinyl Material

Simple Vinyl

Pro Sign Vinyl

Wall Vinyl

50/50 Window Perf

Backlit Vinyl

VINYL APPLICATION

INSTALL (566)

Application Material/Service

Application Tape

Simple Laminate

Pro Laminate

Dry Erase Laminate

Installation Time - 1st hour

Photo Gifts

Smile Club saves 10%

DRINKWARE

All ceramic sublimation mugs listed are dishwasher safe, all other drink items are hand wash. Ask about volume discounts for business and promotional use.



11oz Ceramic & 2-Color (Black)

11oz Ceramic Mugs

Item	Code	Price
11oz mug	MUG11 (311)	\$14.99
2-Color 11oz (Black, Navy or Burgundy)	2TMUG (306)	\$19.99



16oz Stein

15oz Mug

15oz & 16oz Ceramic Mugs

Item	Code	Price
15oz mug	MUG15 (466)	\$15.99
Coffee Stein 16oz	STEIN (322)	\$19.99

On the Go		
Item	Code	Price
20oz Tumbler	TUMBLER (319)	\$19.99
10oz Camp Cup	CUP (388)	\$19.99
17oz Water Bottle (White or Silver)	BOTTLE (418)	\$19.99



White or Silver Water Bottle



10oz Camp Cup

Photo Gifts

Smile Club saves 10%

ORNAMENTS

Style	Code	Price
Metal	ORNAMENT (433)	\$19.99

Beneluxe, Circle, Ornament, Berlin

Wood	ORNAMENT (433)	\$19.99
------	----------------	---------

Beneluxe, Circle



Beneluxe



Berlin



Circle



London



Photo Gifts

Smile Club saves 10%

FABRICS

T-shirts

Shirt Size	Code	Price	Item	Code	Price
Adult	TSHIRT (339)	\$16.99	Apron	APRON (429)	\$19.99
S, M, L or XL					
Youth	TSHIRTY (354)	\$16.99	Baby Onesie		
YS, YM, YL			(6M, 12M, 18M)	ONESIE (460)	\$19.99

T-shirt fabrics come in polyblend and are white.
Dark colors do not sublimite, nor do natural fabrics.



Totes & Fabric Squares

Item	Code	Price
Canvas Tote	TOTE (379)	\$24.99
Fabric Squares	SQUARE (240)	15¢ per SQ/IN

Fabric squares are custom cut squares of bulk sublimation fabric material, white polyblend, with your image printed on it. It is rough cut larger than the request size so they can be sewn or used in other projects.

Photo Gifts

Smile Club saves 10%

NOVELTIES

Item	Code	Price
Button 2.25 in	BUTTON (349)	99¢
Bag Tag 2.5x4.5	TAGS (321)	\$9.99
Business Card Holder	BCH (352)	\$14.99
Coasters, set of 4 4x4	SCS (391)	\$19.99
Coasters, slate set of 3	SLATE (277)	\$29.99
Coat Hanger 9x18	COAT (380)	\$29.99
Cutting Board 8x12	SGCB (489)	\$24.99
Cutting Board 12x16	LGCB (387)	\$34.99
Flip Flops (pair)	FLIPFLOP (239)	\$24.99
Magnet 2x2	MAGNET (425)	\$5.99
Magnet 2x3	MAGNET (425)	\$24.99
Magnet Board 11x14	MAGNETBOARD (453)	\$14.99
Mini License Plate	MLP (290)	\$19.99
Mousepad	MOUSEPAD (340)	\$14.99
Notepad 4x5 50 page	XEROX (341)	\$14.99
Notepad 5x5 50 page	XEROX (341)	\$16.99
Notepad 4x10 50 page	XEROX (341)	\$18.99
Photo Frame 4x6 on 8x10	4xFRAME (428)	\$24.99
Puzzle 25 pc 11x14	PUZZLE25 (479)	\$19.99
Puzzle 63 pc 11x14	PUZZLE63 (336)	\$24.99
Puzzle 130 pc 11x14	PUZZLE130 (399)	\$29.99
Slate 5x5	SLATE (277)	\$34.99
Slate 5x7	SLATE (277)	\$39.99
Slate 7x7	SLATE (277)	\$44.99
Tile 4x4 Ceramic	TILE (212)	\$4.99
Tin 5x7	TIN (381)	\$14.99
Tumbled Stone 4x4	TSTONE (406)	\$9.99
Tumbled Stone 6x6	TSTONE (406)	\$14.99



Photo Button



Coasters with Slotted Holder



Puzzle



Mousepad

Studio Services

Smile Club saves 10%

We provide quick, walk-in services in. To book an appointment, please call our store. Studio space must be set up ahead of time and not all locations have full availability.

Headshots

Service	Price
Headshot	\$59.99
Additional Pose/Person	\$10.00



Business headshots typically spend about 15 minutes in the store. Soft retouching is included, such as blemish removal, tired eyes, teeth whitening, and wrinkle smoothing. Clients walk away with one pose on a CD, including a color, black and white, and sepia version of the image. Small groups are welcome. These headshots are also useful for theatre headshots, social media, medical school applications, or anything that may need a polished portrait of you!

Passports, Visas, & ID Photos

Service	Code	Price
U.S. Passport	PP (26707)	\$13.99
International Passport	IIPP (89703)	\$35.00
Duplicate	PP2 (437)	\$5.99



Our studio is equipped to print passport photos. We keep up to date on passport specifications, and have a program that outputs the correct head ratios needed for passport applications. We are able to do most countries, and if your photo is rejected, we will redo it for free.

Photo Booth Rentals

Smile Club saves 10%

Rent our photo booth for parties, special events, weddings, corporate events, grand openings and more! Price includes an attendant to set-up, break down and help your guests enjoy the booth. This is a digital booth, no prints but guests get to digitally and socially share instantly as soon as their photos are taken! There are a variety of digital props and fun animations making it a great way to entertain as well as promote your event or share it with those who couldn't attend.

Photo Booth Rental

Service	Code	Price
2 hour event w/attendant	PBR (103)	\$500.00
Additional time		\$100/hr
96x96 printed backdrop	SIGN (252)	\$199.99
Pull-up banner	UPBANNER (483)	\$129.99



Framing & Matting

Smile Club saves 10%

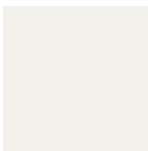
We offer custom framing at our Colorado locations and custom matting at all locations. Because our products are custom, they will need to be ordered and shipped in, so please allow at least a week for the product to arrive. Ask about our pre-cut mats that may still be in stock. Mats and mat openings can be cut to any size. Next day mats can be sized and cut and delivered to any store to customize our selection of ready-made frames.

NEXT DAY MATS

EM (346)

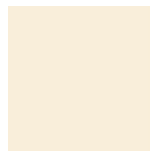
Size	Mat	Mounted	Mat & Mount
8x10	\$10.00	\$10.00	\$20.00
11x14	\$15.99	\$12.00	\$24.00
16x20	\$17.99	\$16.00	\$31.00
18x24	\$19.99	\$18.00	\$35.00
20x24	\$24.99	\$20.00	\$38.00
22x28	\$29.99	\$23.00	\$43.00
24x36	\$39.99	\$28.00	\$52.00

NEXT DAY MAT COLORS

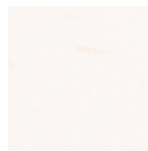


A4901

B3807



A4802



A4701



A4819



A4817



A4942



A4854



A4805



A4907



A4709



A4824



A4822



A4876

• All mats include one opening; this price is an additional opening in your mat.

Additional Openings — \$5.00 ea

More than 5 Openings — \$3.00 ea