



The next generation of quality,  
productivity, and security

HP LaserJet Managed MFP E82500 series



High quality,  
low cost



Minimal interruptions.  
Maximum uptime.



The world's most  
secure printing<sup>1</sup>

# High quality, low cost



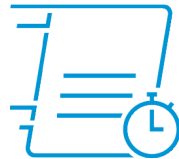
Quality printing for a great value is a smart choice for any business. Produce premium, professional-quality documents at a competitive low cost with an HP LaserJet Managed MFP built to make your work—and your business—look its best.



## Premium quality at a low cost

Print premium, professional-quality documents with sharp text and crisp graphics that stand out for a competitive low cost.

Get consistent quality and performance you can count on. Original HP toner cartridges and drums are specially designed and precisely engineered for HP printers and MFPs—so you can rely on fast, consistent results.



## Fast, professional performance

Equip employees to speed through tasks with an MFP that delivers the professional performance you expect from an enterprise machine.

Choose from a range of modular paper-handling, solution, and connectivity accessories designed to adapt to the needs of workgroups of all sizes.

Spend less time on maintenance. This MFP requires significantly fewer replacement parts.<sup>2</sup>



## Energy efficient

Help keep energy costs down without compromising performance. This device features fusers that warm rapidly and cool quickly, so they start printing sooner, complete jobs faster, and help you conserve more energy.<sup>3</sup>

Save paper and conserve resources with automatic two-sided printing, scanning, and copying. Consume up to 50% less paper by printing on both sides of the page.

Easily recycle your Original HP cartridges at no charge through HP Planet Partners.<sup>4</sup>

# Minimal interruptions. Maximum uptime.

Annoying interruptions and complex maintenance can slow down printing, and ultimately, the pace of business. Avoid pauses in productivity with an HP LaserJet Managed MFP designed for maximum uptime—so you can count on reliable results day in and day out.

## Move business forward

Grab the documents you need and go. This device wakes up quickly and prints fast—up to 60 pages per minute (ppm) (E82560dn/z models).<sup>5</sup> Your pages are ready right when you need them.

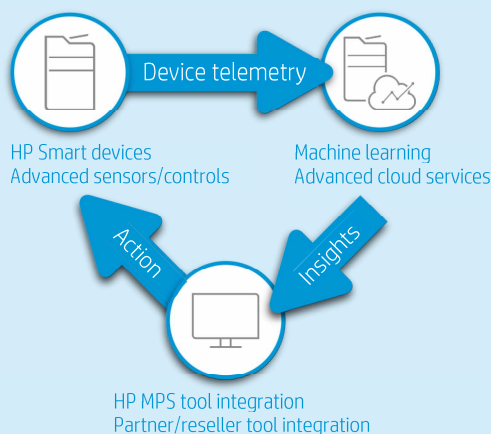


Accelerate workflow with single-pass, two-sided scanning up to 120 images per minute (ipm), simplex, and up to 240 ipm, duplex (Flow models).<sup>6</sup>

Scan documents directly to Microsoft® Office 365 (Flow models only) and SharePoint®, plus email, USB, and network folders.<sup>7</sup>

## Minimize downtime

HP Smart Device Services (SDS) remote diagnostic insights and remediation capabilities help minimize downtime. HP devices are smart and communicate their health before the device stops. SDS helps optimize HP devices for your usage environment with machine-to-machine learning, predictive analytics, and advanced device controls that can be made remotely.



SDS keeps your data and network secure—it only tracks device ID and telemetry data, and it does not collect customer names, user data, or job content.

SDS uses the same secure network protocols used by web banking applications, Microsoft Outlook, and Office 365.

## Expand your capacity

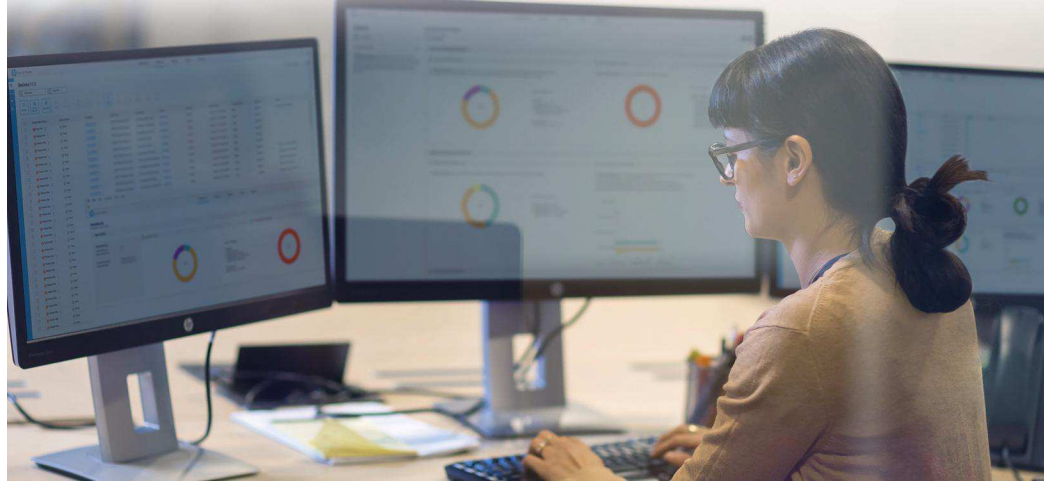
Tailor this MFP to the needs of your business with a wide range of optional paper-handling accessories. Optional trays support media sizes up to 11 x 17 inches (A3). For a list of compatible accessories by model, see the paper-handling accessories table on page 10.



Organize, staple, and collect documents with an optional booklet finisher that helps you save time and look professional.

Print up to 6,140 pages without reloading paper, using the optional 2,000-sheet high-capacity input tray and the optional 3,000-sheet high-capacity side input tray, with support for media sizes up to letter (A4) (E82500 series only).<sup>8</sup>

# The world's most secure printing<sup>1</sup>



Only HP Enterprise devices repair themselves from attacks in real time, with built-in security to help keep your network safe. Automatically monitor threats, detect intrusions, and validate operating software with security offered only by HP.<sup>1</sup>



## Always on guard

Only HP Enterprise devices offer built-in security features that are always on guard.<sup>1</sup>

- With HP Sure Start, each device regularly checks its operating code and repairs itself from attempted hacks.
- Whitelisting checks firmware during startup to help ensure it's authentic, good code—digitally signed by HP.
- Run-time intrusion detection continually monitors activity to detect and stop attacks, then automatically reboots.
- HP Connection Inspector stops malware from “calling home” to malicious servers, stealing data, and compromising your network, then automatically triggers a self-healing reboot.

Thwart potential attacks by receiving instant notification of security issues, so immediate action can be taken. This MFP works with leading Security Information and Event Management (SIEM) tools like Splunk and ArcSight.



## Take security to the next level

Help protect your MFP with more than 250 embedded security features.<sup>9</sup> Protect information in transit over the network and stored on the device—keys, passwords, certificates, and more. Store data on the 256-bit encrypted HP High-Performance Secure Hard Disk (HDD).

Give workgroups what they need to succeed. Easily develop, deploy, and integrate HP and third-party solutions with the HP Open Extensibility Platform (OXP). Add features such as card readers and more through the Hardware Integration Pocket (HIP).<sup>10</sup>

Add another layer of protection and further safeguard information stored on the device, using the optional HP Trusted Platform Module.<sup>11</sup>



## Build business efficiency

Centralize control of your printing environment with HP Web Jetadmin—and help build business efficiency.<sup>12</sup> Optional HP JetAdvantage Security Manager offers an effective, policy-based approach to help secure HP printing and imaging devices.<sup>13</sup> Easily set security configuration policies and automatically validate settings for every HP printer and MFP in your fleet.

Simplify business printing with the industry's first SaaS (Software as a Service) portal<sup>14</sup> for managing both apps and users.<sup>15</sup>

Save IT time and make printing easy for the entire enterprise by using a single driver for all HP devices.<sup>16</sup>

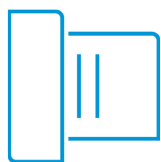




# Give workgroups the speed they need



Accelerate workflow, improve accuracy, and easily connect people throughout your organization. Complete high-volume scan jobs super-fast—up to 240 ipm for Flow models<sup>6</sup>—and avoid extra steps with a Flow MFP designed for maximum productivity.



## Easily scan and edit text

Capture text from documents with high accuracy. Easily scan documents and save as a Microsoft Word or searchable PDF file with HP Scan and I.R.I.S. Readiris™ Pro OCR Software.

Preview and edit scans, adjust images, and launch print, scan, copy, and fax (optional) jobs—all at the 8.0-inch (20.3 cm) color touchscreen. For more information, see Appendix C on page 21.



## Fast scanning and input

Enter data more quickly and accurately using the pull-out keyboard, one of the features available on all Flow models.<sup>17</sup>

Turn stacks of paper documents into digital files. Load up to 250 pages into the automatic document feeder (ADF) (E72500 Flow models and all models of the E82500 series) for fast, unattended scanning.<sup>18</sup>

Walk up and print from or scan to a memory device using the easy-access USB port.<sup>19</sup>



## Every page, every time

Capture every page easily—with confidence. HP EveryPage gives employees smooth paper-handling capabilities to detect potential errors or missed pages on the spot—for scan jobs of all kinds.<sup>17</sup>

Help ensure every scanned document is properly oriented, cropped to size, and grayscale-optimized.

### Flow MFP features



HP EveryPage  
featuring ultrasonic  
multi-feed detection



Faster scan  
speeds



Automatic  
page orientation, auto-  
crop, and auto-tone



Pull-out  
keyboard



Built-in  
OCR









Higher capacity  
ADF

# Product walk-around

HP LaserJet Managed Flow MFP E82560z shown



## Series at a glance

						
Model (product number)	MFP E82540dn (Z8Z18A)	Flow MFP E82540z (Z8Z19A)	MFP E82550dn (Z8Z20A)	Flow MFP E82550z (Z8Z21A)	MFP E82560dn (Z8Z22A)	Flow MFP E82560z (Z8Z23A)
Functions	Print, copy, and scan (fax and wireless optional) <i>(all models)</i>					
Print speed (letter and A4) <sup>5</sup>	Up to 40 ppm	Up to 40 ppm	Up to 50 ppm	Up to 50 ppm	Up to 60 ppm	Up to 60 ppm
ADF capacity; supports media sizes up to 11 x 17 inches (A3)	250 sheets	250 sheets	250 sheets	250 sheets	250 sheets	250 sheets
Scan speeds (letter and A4, black and color) <sup>6</sup>	90 ppm/180 ipm, simplex/duplex	120 ppm/240 ipm, simplex/duplex	90 ppm/180 ipm, simplex/duplex	120 ppm/240 ipm, simplex/duplex	90 ppm/180 ipm, simplex/duplex	120 ppm/240 ipm, simplex/duplex
Input capacity	Standard: 1,140 sheets; Maximum: 6,140 sheets <i>(all models)</i>					
Advanced workflow features	Send to Microsoft SharePoint	Same as E82540dn, plus HP EveryPage technology, pull-out keyboard, auto-tone, auto-orientation, auto-page-crop, embedded OCR	Send to Microsoft SharePoint	Same as E82550dn, plus: HP EveryPage technology, pull-out keyboard, auto-tone, auto-orientation, auto-page-crop, embedded OCR	Send to Microsoft SharePoint	Same as E82560dn, plus: HP EveryPage technology, pull-out keyboard, auto-tone, auto-orientation, auto-page-crop, embedded OCR

# HP LaserJet Managed MFP E82500 series – Configuration

Select only one finisher accessory:<sup>22</sup>

RECOMMENDED

Select input accessory:<sup>23</sup>

REQUIREMENTS VARY BY REGION



## Inner finisher (Y1G00A)

### Top tray:

- Up to 50 sheets (sort/stack)
- Media size: up to 11 x 17 in
- Media weight: 14 to 85 lb

### Main tray:

- Up to 500 sheets (sort/stack/staple)
- Media size up to 11 x 17 in
- Media weight: 14 to 68 lb



## Booklet finisher (Y1G07A)

### Top tray:

- Up to 250 sheets (sort/stack/C-fold/V-fold)
- Media size: up to 12 x 18 in
- Media weight: 14 to 80 lb

### Main tray:

- Up to 2,000 sheets (sort/stack/staple/saddle staple/punch/C-fold/V-fold)
- Media size: up to 12 x 18 in
- Media weight: 14 to 93 lb

### Booklet tray:

- ~5 sets of 25 sheets each



## Stapler/stacker finisher (Y1G18A)

### Top tray:

- Up to 250 sheets (sort/stack)
- Media size: up to 12 x 18 in
- Media weight: 14 to 80 lb

### Main tray:

- Up to 3,000 sheets (sort/stack/staple)
- Media size: up to 12 x 18 in
- Media weight: 14 to 93 lb



## Job separator (Y1G01A)

- Up to 125 sheets
- Media size: up to 11 x 17 in
- Media weight: 16 to 68 lb



## Cabinet (Y1G16A)



## Dual cassette feeder (Y1F98A)

- Tray 1: up to 520 sheets
- Tray 2: up to 520 sheets
- Media size: up to 11 x 17 in
- Media weight: 16 to 58 lb



## High-capacity input tray (Y1G21A)

- Up to 2,000 sheets
- Media size: up to letter
- Media weight: 16 to 58 lb



## 2/3 Hole punch

- For Booklet or Stapler/stacker finisher (shown above): Y1G10A
- For Inner finisher: Y1G02A



## Staples (5,000)

- For Inner finisher or Booklet finisher: Y1G13A
- For Stapler/stacker finisher: Y1G14A



Standard on all models:

- 250-sheet ADF
  - Single pass, two-sided scanning
  - Scans up to 120 ipm, simplex and 240 ipm, duplex
  - Media size: up to 11 x 17 in
  - Media weight: 12 to 58 lb, simplex and 16 to 58 lb, duplex

- 100-sheet multipurpose tray 1
  - Media size: up to 11 x 17 in
  - Media weight: 16 to 58 lb

- 520-sheet tray 2
  - Media size: up to letter
  - Media weight: 16 to 58 lb

- 520-sheet tray 3
  - Media size: up to 11 x 17 in
  - Media weight: 16 to 58 lb



## High-capacity side input tray (Y1G20A)

- Up to 3,000 sheets
- Media size: up to letter
- Media weight: 16 to 80 lb
- Requires selection of either the Dual cassette feeder or the HCI 2,000-sheet input tray



## Tray heater 110V (Y1G22A)

Helps reduce paper jams in high humidity environments. Optional; may choose one. If Dual cassette feeder (Y1F98A) or HCI 2,000-sheet tray (Y1G21A) is selected, may select one additional tray heater.



## Tray heater 220V (Y1G22A)

Helps reduce paper jams in high humidity environments. Optional; may choose one. If Dual cassette feeder (Y1F98A) or HCI 2,000-sheet tray (Y1G21A) is selected, may select one additional tray heater.

# Technical specifications

	HP LaserJet Managed MFP E82500 series – dn models	HP LaserJet Managed MFP E82500 series – Flow z models		
Product number	E82540dn: Z8Z18A E82550dn: Z8Z20A E82560dn: Z8Z22A	E82540z: Z8Z19A E82550z: Z8Z21A E82560z: Z8Z23A		
Control panel/data entry	8.0-inch (20.3 cm) pivoting color touchscreen; easy-access USB; <sup>19</sup> Hardware Integration Pocket <sup>10</sup>			
		Plus: pull-out keyboard		
Print speed (letter and A4) <sup>5</sup>	E82540dn/z: Up to 40 ppm E82550dn/z: Up to 50 ppm E82560dn/z: Up to 60 ppm			
Print resolution	Up to 600 x 600 dpi ( <i>all models</i> )			
Scanning resolution	Up to 600 x 600 dpi ( <i>all models</i> )			
ADF scan speed (letter and A4, black and color) <sup>6</sup>				
Single-sided	Up to 90 ppm	Up to 120 ppm		
Two-sided	Up to 180 ipm	Up to 240 ipm		
Features				
Printing	HP Laser technology, print preview, automatic two-sided printing, portrait/landscape orientation, black ink only, control panel shortcuts, store print jobs Better remote diagnosis and repair; higher first-time fix rates; full toner, LLC utilization; capture un-billed pages from reconnected network devices, personal printers; onsite access to service training; A3 LaserJets are designed for fewer LLC replacements <sup>2</sup> and faster repairs			
Scanning	Flatbed scanner: 11.7 x 17 in (297 x 432 mm); ADF with single-pass, two-sided scanning up to 11.7 x 17 in (297 x 432 mm); Scan input modes: Front panel applications: Copy, E-mail, Fax, Save to Network Folder, Save to USB, Save to Device Memory; Open Extensibility Platform (OXP) applications Advanced features: Optimize text/picture, image adjustments, job build, output quality setting, selectable scan resolution up to 600 dpi, auto detect color, edge erase, job notification, blank page suppression; Quick Sets; Scan file format: JPEG, PDF, TIFF, XPS			
		Plus: HP EveryPage with ultrasonic multi-feed detection, embedded optical character recognition (OCR), auto-orientation, auto-crop-to-page, auto-tone		
Digital sending	Scan to email, save to network folder, save to USB drive, send to SharePoint, send to FTP, send to sFTP, send to LAN fax, send to Internet fax, Local Address Book, SMTP over SSL, blank page removal, edge erase, auto color sense, auto-crop to content, compact PDF, auto-tone scale, auto-orientation, multi-pick detect, auto-straighten, auto-crop-to-page			
File formats	Digital send: PDF, Hi-compression PDF, JPEG, TIFF, MTIFF, XPS, PDF/A Scan to easy-access USB: PDF, JPEG, TIFF, MTIFF, XPS, PDF/A Print from easy-access USB: PDF, PS, Print Ready files (.prn, .pcl, .cht)	Digital send: PDF, Hi-compression PDF, JPEG, TIFF, MTIFF, XPS, PDF/A, TEXT (OCR), Unicode TEXT (OCR), RTF (OCR), Searchable PDF (OCR), HTML (OCR), CSV (OCR) Scan to easy-access USB: PDF, JPEG, TIFF, MTIFF, XPS, PDF/A, TEXT (OCR), Unicode TEXT (OCR), RTF (OCR), Searchable PDF (OCR), HTML (OCR), CSV (OCR) Print from easy-access USB: PDF, PS, Print Ready files (.prn, .pcl, .cht)		
Copying	Two-sided copying, reduce/enlarge from scanner glass (25 to 400%), scalability, image adjustments (darkness, contrast, background cleanup, sharpness), optimized text/picture (text, mixed, printed picture, photograph), N-Up, N or Z-ordering, content orientation, collation, booklet, ID scan, job build, job storage, watermark, stamps, book mode scans, erase edges, automatically detect color/mono, image preview; Copy resolution: Up to 600 x 600 dpi			
Optional faxing	Fax speed: <sup>27</sup> 3 seconds per page/33.6 kbps (letter/A4); fax forwarding, receive fax polling, speed dial up to 1000 numbers, each with 210 destinations, auto-fax reduction, auto-redialing, stored faxes, fax archiving Fax resolution: Up to 300 x 300 dpi (400 x 400 dpi for received faxes only)			
Processor	800 MHz ( <i>all models</i> )			