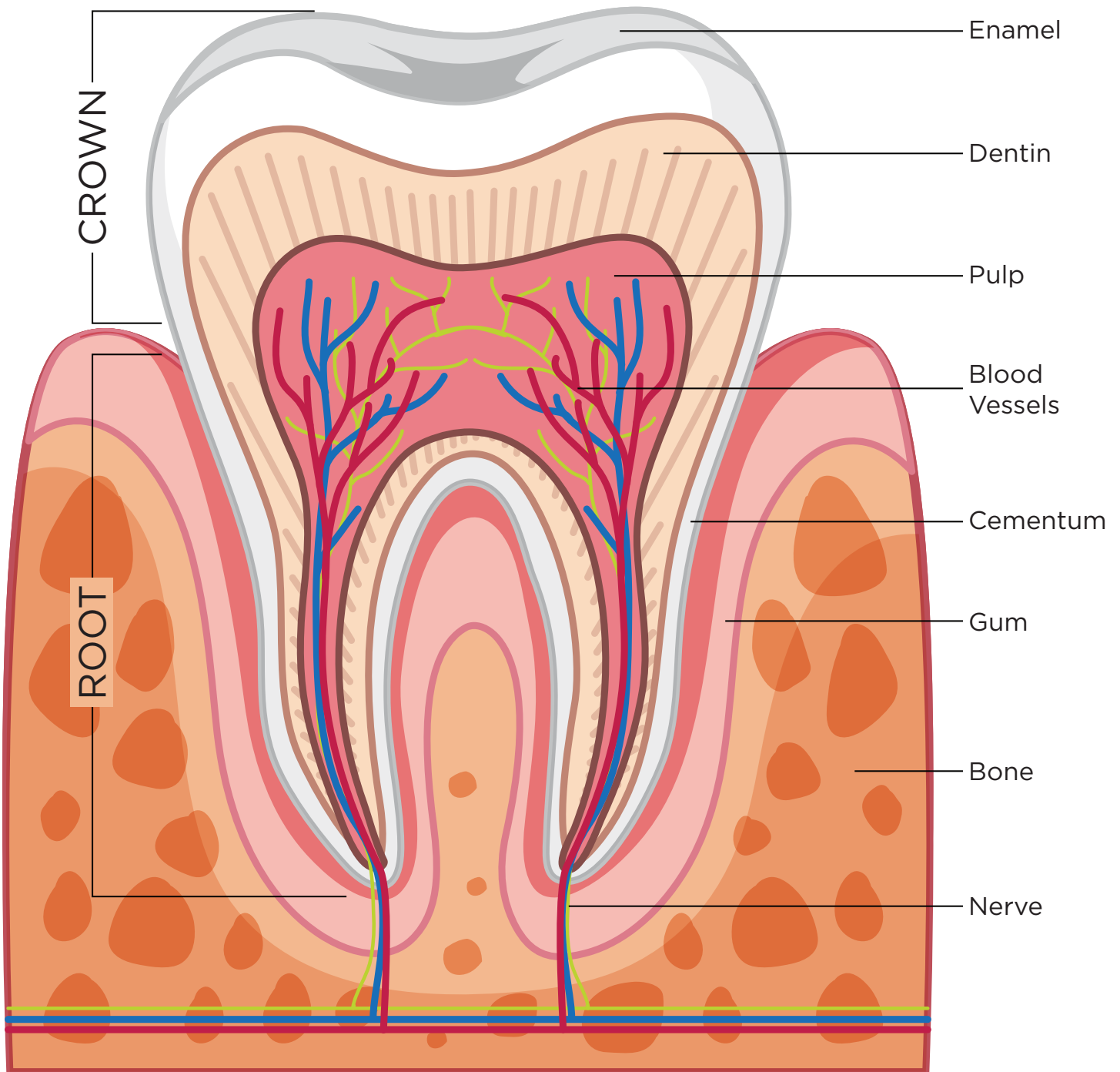


# PARTS OF A TOOTH:



**Crown:** The part of the tooth that you can see.

**Root:** The part of the tooth that you can not see. It is stuck into the bone so your teeth don't fall out!

**Enamel:** This hard outer layer protects your tooth.

**Dentin:** Makes up most of your tooth. It is also hard but not as hard as enamel.

**Pulp:** The soft tissue deep inside your tooth that contains the blood vessels and nerves.

**Blood Vessels:** Supply nutrients to the tissue that keeps your tooth connected and in place.

**Cementum:** Makes up the root of the tooth and is similar to bone.

**Gum:** The pink, fleshy skin that covers the root of the tooth and the bone underneath it.

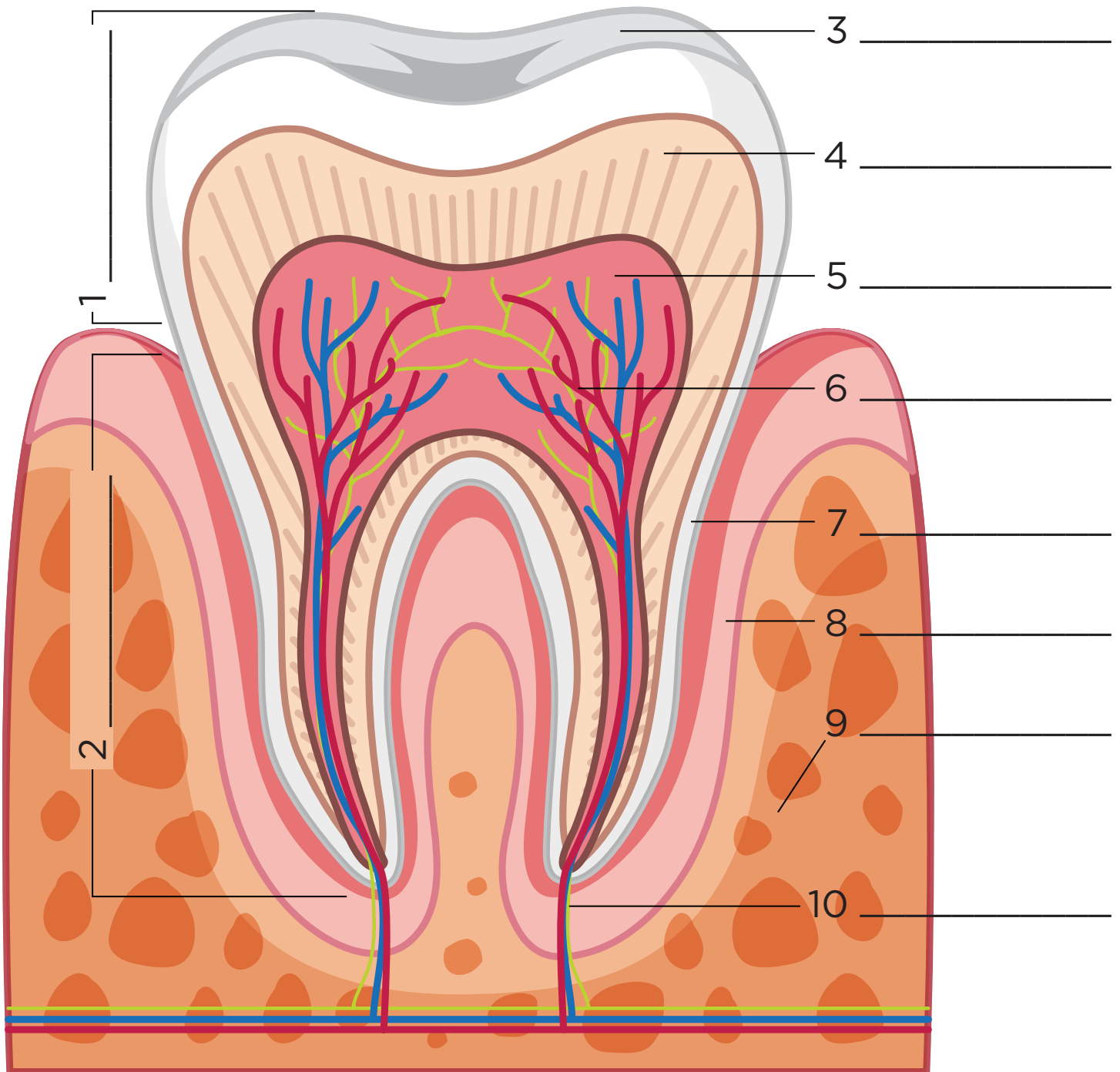
**Bone:** Your teeth are sunk into your jaw bone.

**Nerve:** Measures pressure, heat and cold. It hurts when you bite down too hard or if you get an infection.



Visit [www.AmericasToothFairy.org/resources](http://www.AmericasToothFairy.org/resources) for more!

# LABEL THE PARTS OF A TOOTH



**1:** The part of the tooth that you can see.

**2:** The part of the tooth that you can not see. It is stuck into the bone so your teeth don't fall out!

**3:** This hard outer layer protects your tooth.

**4:** Makes up most of your tooth. It is also hard but not as hard as enamel.

**5:** The soft tissue deep inside your tooth that contains the blood vessels and nerves.

**6:** Supply nutrients to the tissue that keeps your tooth connected and in place.

**7:** Makes up the root of the tooth and is similar to bone.

**8:** The pink, fleshy skin that covers the root of the tooth and the bone underneath it.

**9:** Your teeth are sunk into your jaw bone.

**10:** Measures pressure, heat and cold. It hurts when you bite down too hard or if you get an infection.



Visit [www.AmericasToothFairy.org/resources](http://www.AmericasToothFairy.org/resources) for more!