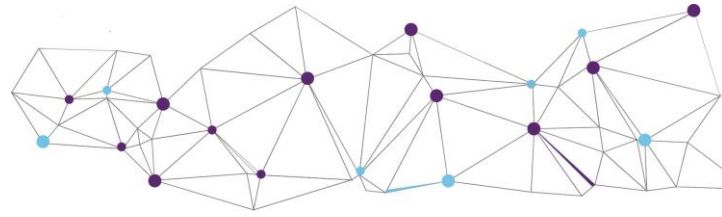




TEFCE

Towards a European Framework for
Community Engagement in Higher Education



Erasmus+ project: "Towards a European Framework for Community Engagement in Higher Education" (TEFCE)

Dublin Piloting Visit: Agenda

Thursday 7th -Friday 8th November 2019

Technological University Dublin

Venue: GW 402, 4th Floor Greenway Hub, Technological University Dublin, Grangegorman Campus, Dublin



Co-organizer



Funding



PROJECT FUNDING



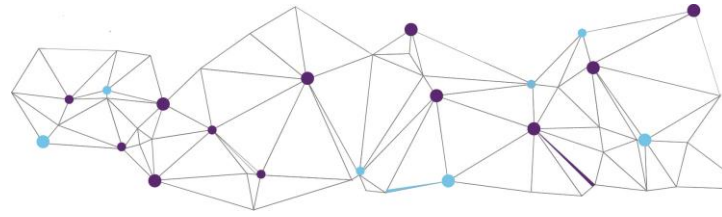
PROJECT CO-FINANCING





TEFCE

Towards a European Framework for
Community Engagement in Higher Education



Evening 1: WEDNESDAY, NOVEMBER 6th, 2019

5pm	(Optional) Guided Tour of the Old Jameson Distillery (Bow Street, Smithfield) – (https://www.jamesonwhiskey.com/en-IE/) (Costs covered by TU Dublin)
6.30pm	(Optional) Group dinner, Sparks Bistro, (Smithfield square) – participants own expenses (https://www.sparksbistro.com/)

DAY 1: THURSDAY, NOVEMBER 7th, 2019

8.45am	Welcome Coffee/Registration to the meeting (Location: TU Dublin, Grangegorman Campus, Room GW 402, Greenway Hub) Participants will be met at main reception (Rathdown House) and directed to the Greenway Hub
9.00am	Opening Piloting Visit – Welcome Remarks Community Engagement @TU Dublin – Dr. Noel O’Connor, Director, Student Development, TU Dublin Dublin City Council & HEI Community Engagement – Bruce Philips, DCC TEFCE Project Update & Tour de Table – Thomas Farnell, IDE TEFCE Project @ TU Dublin – Emma O’Brien, TU Dublin
10.00am	Coffee Break
10.15am	Thematic focus group 1: Dimensions 1 and 4 (teaching and learning; students) Dr. Catherine Bates – Students Learning with Communities, TU Dublin Caoimhe Prendergast & Sarah Staunton -Entrepreneurship Students, TU Dublin Dr. John Gilligan- Rehab Project, TU Dublin
11.45 am	Light lunch – (expenses covered by TU Dublin)
12.30pm	Thematic focus group 2: Dimensions 2 and 3 (research; service and knowledge exchange)

PROJECT FUNDING



Funded by the
Erasmus+ Programme
of the European Union

PROJECT CO-FINANCING

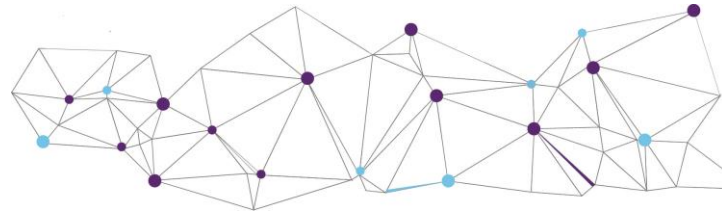


GOVERNMENT OF THE REPUBLIC OF CROATIA
Office for Cooperation with NGOs



TEFCE

Towards a European Framework for
Community Engagement in Higher Education



	<p><i>Prof. Brian O'Neill – Research Director & Dean of Graduate Research School, TU Dublin</i> <i>Jenny Haughton – Public Art Co-ordinator, Grangegorman Development Agency (GDA)</i> <i>Kathleen McCann – ABC Project, TU Dublin & GDA</i> <i>Eadaoin Kelly – St Mary's Primary School (School Principal)</i> <i>Owen Binchy – An Siol (Community Development Project)</i> <i>Conor Casby – Schools completion Programme</i></p>
2.00 pm	Coffee Break
2.15pm	<p>Thematic focus group 3: Dimensions 5,6 and 7 (university management: partnerships and policies; peer support)</p> <p><i>Pat O'Donnell – TU Dublin Programme Team</i> <i>Ger Casey – Campus Development, CEO, Grangegorman Development Agency</i> <i>Dr. Claire Mc Donnell – Chemistry Education Project, TU Dublin</i></p>
3.45pm	Wrap-up Piloting Visit Day 1
4.15pm	Travel to City Hall (<i>Participants reach City Hall via public transport or on foot</i>)
5.00pm	Civic Reception with Lord Mayor of Dublin, City Hall, Dame Street, Dublin 2
6.30pm	(Optional) Group dinner, Mongolian Barbeque, 7 Anglesea Street, Temple Bar. (www.mongolianbbq.ie) (participants own expenses)

DAY 2: FRIDAY, NOVEMBER 8^h, 2019

9.00am	Welcome Coffee (TU Dublin, Grangegorman Campus, Room GW 402 – Greenway hub)
9.15am	<p>Higher Education Community Engagement in Context</p> <p><i>Colm O'Hehir – Campus Engage Network</i> <i>Prof. Ellen Hazelkorn – Community Engagement Expert</i></p>

PROJECT FUNDING



Funded by the
Erasmus+ Programme
of the European Union

PROJECT CO-FINANCING

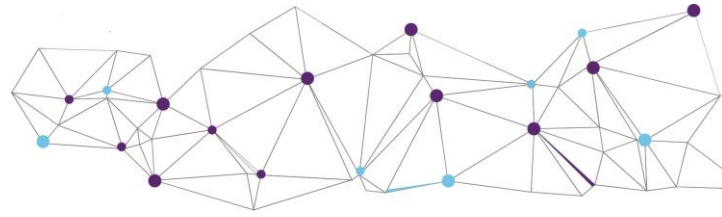


GOVERNMENT OF THE REPUBLIC OF CROATIA
Office for Cooperation with NGOs



TEFCE

Towards a European Framework for
Community Engagement in Higher Education



10.00am	Peer review team assessment Part 1 <i>Summary findings and assigned levels based on Day 1 (using scores and 'heatmap' framework); SLIPDOT analysis; Conclusions and draft recommendations</i> Group photo during this session
11.00am	Coffee Break
11.30am	Peer review team assessment Part 2 <i>Summary findings and assigned levels based on Day 1 (using scores and 'heatmap' framework); SLIPDOT analysis; Conclusions and draft recommendations</i>
1.00pm	Light lunch – (expenses covered by TU Dublin)
2.00pm	Project Pilot Visit review (Dresden, Twente, Rijeka, Dublin)
3.30 pm	Coffee Break
4.00-5.00	Project Planning for 2020

PROJECT FUNDING



Funded by the
Erasmus+ Programme
of the European Union

PROJECT CO-FINANCING



GOVERNMENT OF THE REPUBLIC OF CROATIA
Office for Cooperation with NGOs