

## Erasmus+ project: "Towards a European Framework for Community Engagement in Higher Education" (TEFCE)

### Practical information

Tuesday 24<sup>th</sup> – Wednesday 25<sup>th</sup> September 2019

University of Rijeka

**Venue:** University of Rijeka Rectorate (Trg braće Mažuranića 10, 51000 Rijeka, Croatia)

Host and co-organiser



Co-organiser



Institute for the  
Development of Education

Funding



Co-funded by the  
Erasmus+ Programme  
of the European Union

#### PROJECT FUNDING

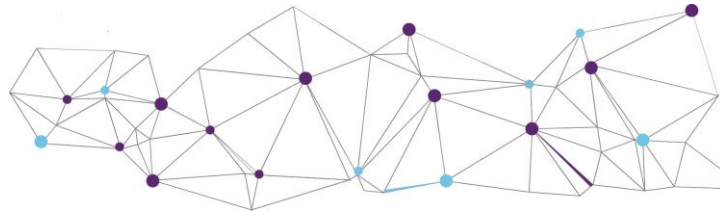


Funded by the  
Erasmus+ Programme  
of the European Union

#### PROJECT CO-FINANCING



GOVERNMENT OF THE REPUBLIC OF CROATIA  
Office for Cooperation with NGOs



## I. Formal Registration

Following participants were initially invited to take part in the TEFCE Piloting Visit in Rijeka:

- IDE: Ninoslav Scukanec-Schmidt ([nscukanec@iro.hr](mailto:nscukanec@iro.hr)),
- IDE: Thomas Farnell ([tfarnell@iro.hr](mailto:tfarnell@iro.hr))
- Uni Twente: Prof. Paul Benneworth ([p.benneworth@utwente.nl](mailto:p.benneworth@utwente.nl))
- Uni Rijeka: Dr. Bojana Culum ([bculum@ffri.hr](mailto:bculum@ffri.hr))
- TU Dresden: Ines Schmidt ([ines.schmidt@tu-dresden.de](mailto:ines.schmidt@tu-dresden.de))
- TU Dresden: Anja Jannack ([Anja.Jannack@tu-dresden.de](mailto:Anja.Jannack@tu-dresden.de))
- City of Dresden: Regine Kramer ([rkramer2@dresden.de](mailto:rkramer2@dresden.de))
- PPMI: Irma Budginaite-Mackine, ([irma@ppmi.lt](mailto:irma@ppmi.lt))
- ECIU: Troels Gyde Jacobsen ([troels.jacobsen@uis.no](mailto:troels.jacobsen@uis.no))

In order to arrange the pilot visit to your convenience, each participant should send an **e-mail** to [nina.kolakovic@uniri.hr](mailto:nina.kolakovic@uniri.hr) to register until September 1<sup>st</sup> with the following information:

**Subject: Registration TEFCE Piloting VISIT**

**Name, Surname:**

**Institution:**

**Date/time of arrival:**

**Date/time of departure:**

**Participation in Joint Dinner 24 September 2019: YES/NO – with dietary preferences/requirements**

**Participation in Joint Dinner 25 September 2019: YES/NO– with dietary preferences/requirements**

**Contact data: (e-mail, phone)**

Thank you.

---

### PROJECT FUNDING

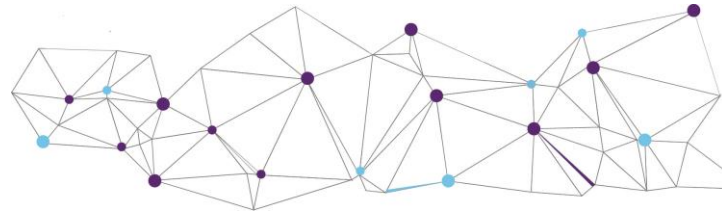


Funded by the  
Erasmus+ Programme  
of the European Union

### PROJECT CO-FINANCING



GOVERNMENT OF THE REPUBLIC OF CROATIA  
Office for Cooperation with NGOs



## II. ELIGIBLE COSTS COVERED BY THE TEFCE PROJECT

Your expenses for travel costs and costs of stay will be covered by the planned project costs of your institution. Due to the regularly reporting procedure the costs of travel and stay will be reimbursed together with other expenses of your institution as foreseen under Erasmus+ KA3. For reporting process, it is necessary to keep all original documents since TUD can only accept expenses as eligible if it is incurred, paid, reasonable and directly project related, and if it is matched by adequate supporting documents. Please keep all original hotel invoices, invoices for other relevant costs, boarding passes, tickets, fees etc. in the files of your institution's travel claim form.

**Expenses limitation:** Please note that we had to plan all project related meetings in advance and prices are changing. The Pilot Visit was planned with 400 EUR travel costs and 120 EUR costs per day/per person daily allowance. As you have to report actual costs the total expenses per person and institution may change. As our budget is limited please take the limits of planned costs into account.

## III. ACCOMMODATION ARRANGEMENTS

You are generally free to select a hotel of your own choice and make the reservation yourself. For your convenience, we have arranged a pre-reservation at the following hotels:

**Hotel Jadran**<sup>1</sup> – 88 € per day (breakfast included) – minimum 3 rooms available initially.

**Hotel Neboder**<sup>2</sup> – 73 € per day (breakfast included) – minimum 7 rooms available initially.

We recommend these hotels due to their close proximity both to the bus station (which has direct bus transfer from the Zagreb airport) and to the meeting location (11-18 minutes walking distance).

The contingent arrangement is open until the 1<sup>st</sup> of September 2019. Please contact the hotels directly via e-mail or phone under the **KEYWORD: TEFCE**.

Further hotel information:

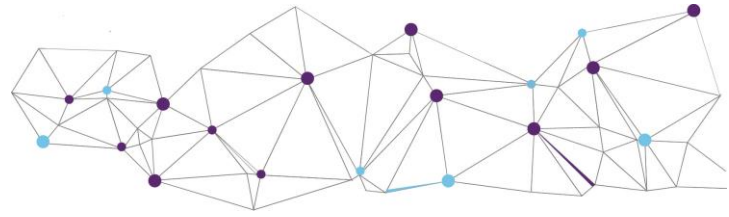
---

<sup>1</sup> Walking route from hotel Jadran to University Rectorate takes 17 minutes:

<https://www.google.com/maps/dir/University+of+Rijeka,+Trg+bra%C4%87e+Ma%C5%BEurani%C4%87a+10,+51000,+Rijeka/Hotel+Jadran,+%C5%A0etali%C5%A1te+XIII+divizije+46,+51000,+Rijeka/@45.3223305,14.4549352,16z/data=!3m1!4b1!4m14!4m13!1m5!1m1!1s0x4764a0fe0f401d87:0xdfe4dba1d232c700!2m2!1d14.4541636!2d45.3257203!1m5!1m1!1s0x4764a1207c918329:0xbd6c18a13006ee29!2m2!1d14.464389!2d45.3188519!3e2>

<sup>2</sup> Walking route from hotel Neboder to University Recotrate takes 8 minutes:

<https://www.google.com/maps/dir/University+of+Rijeka,+Trg+bra%C4%87e+Ma%C5%BEurani%C4%87a+10,+51000,+Rijeka/Hotel+Neboder,+Ul.+Strossmayerova+1,+51000,+Rijeka/@45.3255974,14.4516357,18z/data=!3m1!4b1!4m14!4m13!1m5!1m1!1s0x4764a0fe0f401d87:0xdfe4dba1d232c700!2m2!1d14.4541636!2d45.3257203!1m5!1m1!1s0x4764a0fd768179a9:0x308cc16d588fcaed!2m2!1d14.4508731!2d45.3259521!3e2>



**Hotel Jadran** | Šetalište XIII divizije 46 | 51000 Rijeka | CROATIA |

[jadran@jadran-hoteli.hr](mailto:jadran@jadran-hoteli.hr), +385 51 216 600

**Hotel Neboder** | Strossmayerova 1 | 51000 Rijeka | CROATIA |

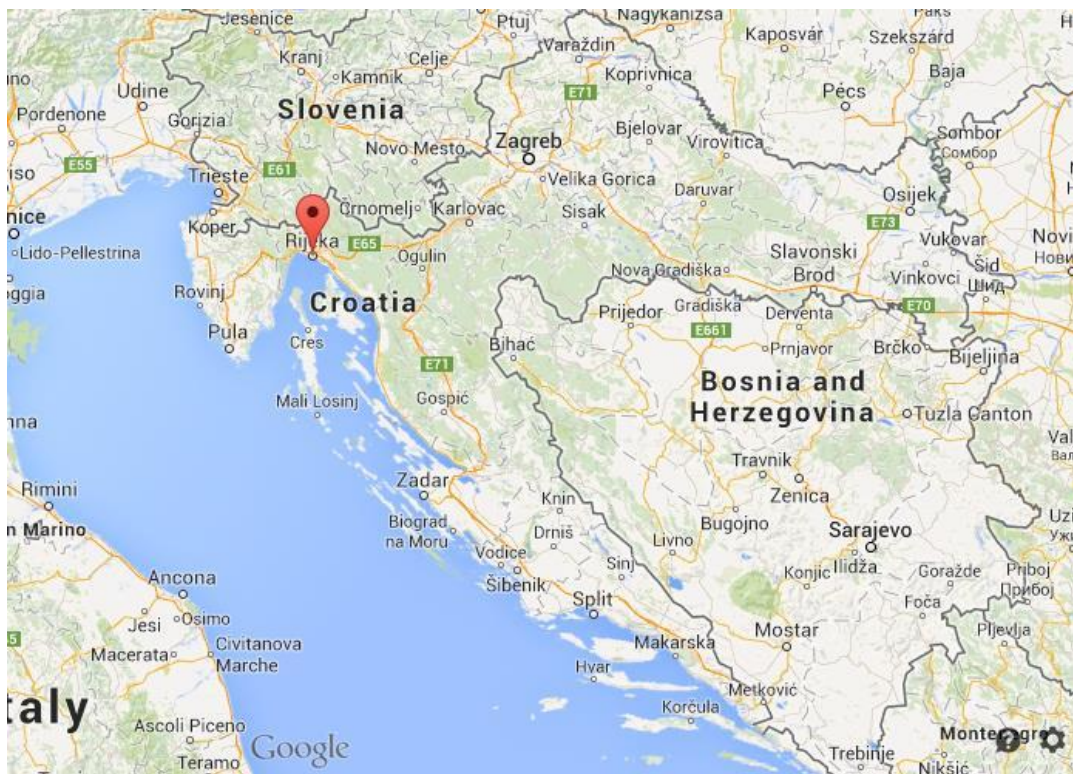
[neboder@jadran-hoteli.hr](mailto:neboder@jadran-hoteli.hr), +385 51 373 538

#### IV. TRAVEL AND LOCAL TRANSFER INFORMATION

The University of Rijeka is located in the city of Rijeka, the main city of the Primorje-Gorski kotar County on Kvarner Bay.

Rijeka City Map: [https://issuu.com/visitrijeka/docs/rijeka\\_mapa](https://issuu.com/visitrijeka/docs/rijeka_mapa)

Rijeka and its surroundings: [https://issuu.com/visitrijeka/docs/blok\\_karta\\_en\\_light](https://issuu.com/visitrijeka/docs/blok_karta_en_light)



#### PROJECT FUNDING

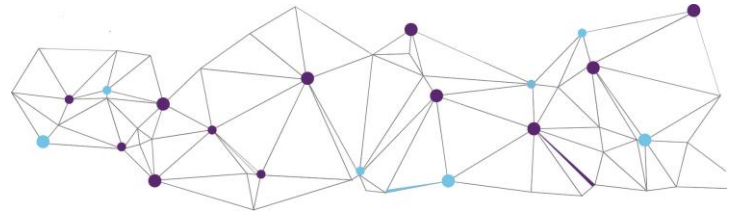


Funded by the  
Erasmus+ Programme  
of the European Union

#### PROJECT CO-FINANCING



GOVERNMENT OF THE REPUBLIC OF CROATIA  
Office for Cooperation with NGOs



## By car

→ Rijeka – Zagreb motorway (toll rates: <https://www.arz.hr/en/tolls/price-list>)

- Zagreb – Rijeka (road E65): 161 km, approximately 1h 30 min

→ **rent a car** at the Zagreb Airport (companies: Active, Alamo/National/Enterprise, Avant, Avis/Budget, CARWIZ Rent a Car, Dollar Car Rental/Thrifty Car Rental, Europcar, Hertz/Firefly, Last Minute Rent a Car/Global Rent a Car, M.A.C.K. Rent a Car, Nova Rent a Car/Right Car, Oryx Rent a Car, SIXT/FLIZZR, Uni Rent)

## By plane

Rijeka has its own airport – [Rijeka International Airport](#). However, it is a small airport with only a few flights to different European cities. All participants are asked to check themselves if any available flights could suit them. If you can fly to Rijeka, a bus shuttle service can then transfer you to Rijeka (tickets can be bought on the bus or online on the following [link](#)).

An equally good option to travel to Rijeka by plane is to fly to "**Franjo Tuđman**" Airport Zagreb and then transfer to Rijeka by bus. Bus options from Zagreb are mentioned below.

## Direct bus line from Zagreb Airport to Rijeka

The best option to travel to Rijeka is to take the bus straight from the airport. However, there is only one bus per day, so you should try and arrange your flights with the bus time in mind. The second option is mentioned below this section.

**From "Franjo Tuđman" Airport Zagreb to Rijeka:** 170 km, approximately 2 hours and 15 minutes.

→ Croatia Airlines shuttle bus from Zagreb: every day at **3.30 pm**

→ Croatia Airlines shuttle bus from Rijeka (leaves from Jelačićev trg): every day at **5.00 am**

**One way ticket costs 150 HRK.**

**Return ticket costs 250 HRK.**

[Online tickets](#) for the Rijeka-Zagreb-Rijeka line can be purchased in advance, and no later than 24 hours prior to travel. For additional information, please call +385 01 6331 982 or write an e-mail to [plesoprijevoz@plesoprijevoz.hr](mailto:plesoprijevoz@plesoprijevoz.hr)

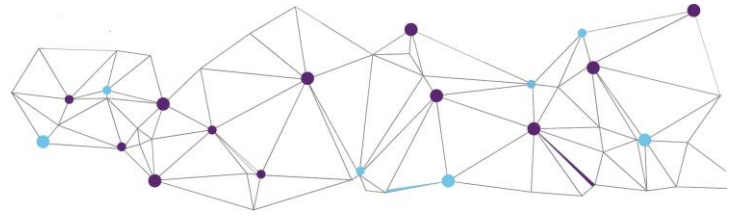
---

### PROJECT FUNDING



### PROJECT CO-FINANCING





## Bus to Rijeka via Zagreb Bus Station

If you cannot make the bus at 3.30 pm from Zagreb Airport, the second option is to transfer from Zagreb airport to the **Zagreb central bus station** (address: Avenija Marina Držića 4, 10000 Zagreb) and to take an intercity bus to Rijeka.

We recommend that you use the FlixBus service, which has buses to Rijeka at 11:30 am, 3 pm and 7:30 pm on Monday, September 24<sup>th</sup>. Detailed information about the timetable and ticket purchases can be found on the [FlixBus webpage](#).

Finally, if none of the above options suit you, one more bus company (Croatia Bus) provides travel to Rijeka from the Zagreb bus station from 5:30 am until 10:30 pm – please search the timetable here: <https://www.akz.hr/purchase-tickets-98/instructions-for-ticket-purchase-online/100>

The Rijeka bus station is located in the city center, on "Žabica". You can find maps on how to reach the hotel from the Rijeka bus station below.

---

### PROJECT FUNDING

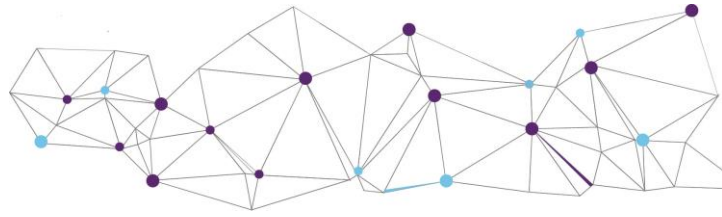


Funded by the  
Erasmus+ Programme  
of the European Union

### PROJECT CO-FINANCING

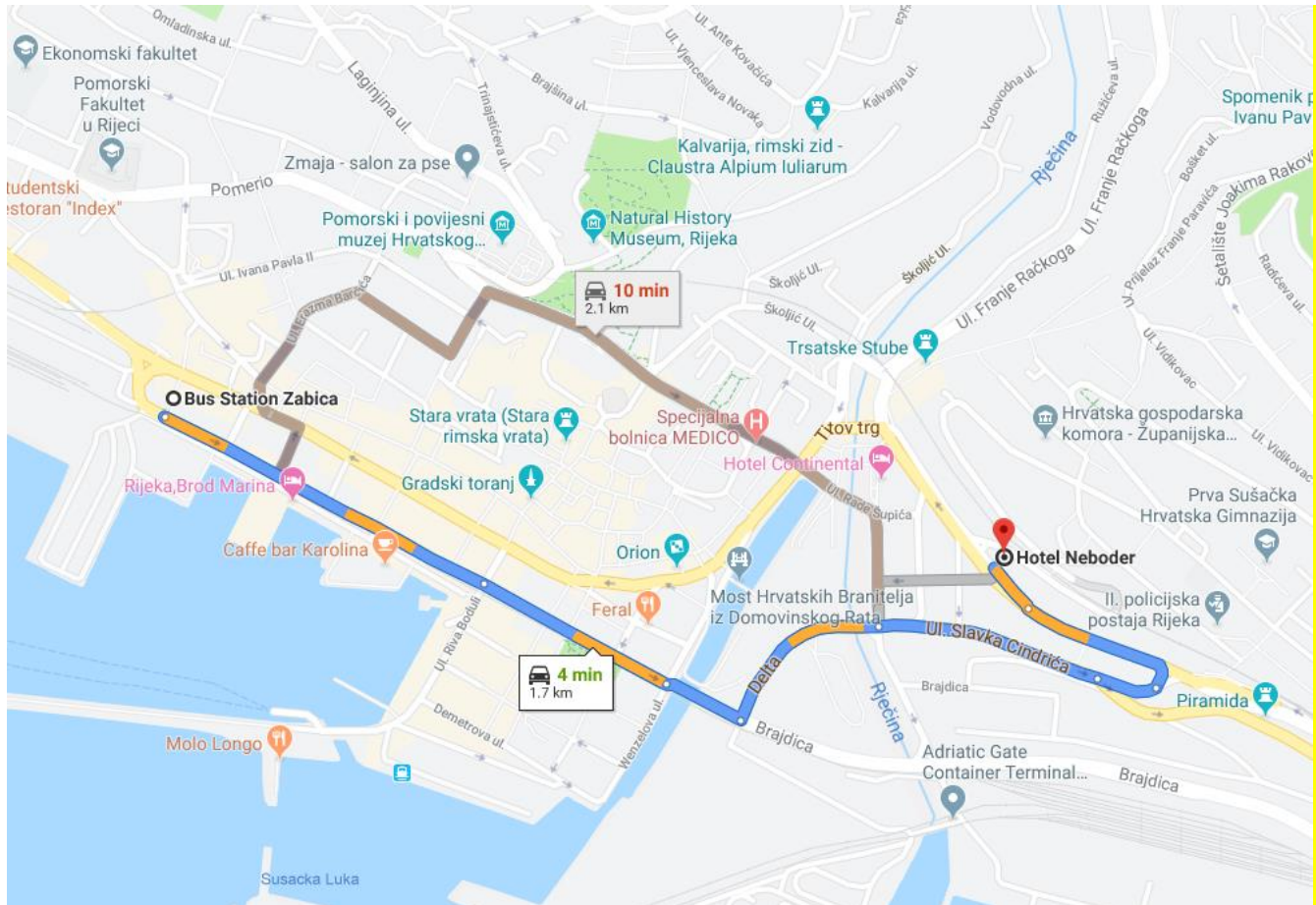


GOVERNMENT OF THE REPUBLIC OF CROATIA  
Office for Cooperation with NGOs



## V. MAPS

Bus station Žabica → Hotel Neboder



To reach Hotel Neboder, you can use Rijeka public transport – **bus lines 1, 2, 6, 7, 7A.**

→ starting bus stop: Žabica

→ bus stop: Fiumara

After you get off the bus at Fiumara bus stop, proceed straight ahead to the traffic light (there should be a coffee shop "Štriga" in front of you when you cross the road). Then go straight ahead towards the stairs near Fast Food "Buddy's", cross the road and turn right, then go straight ahead and you should see a tall white skyscraper – your hotel.

### PROJECT FUNDING



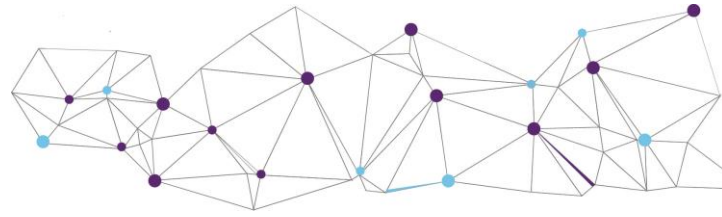
### PROJECT CO-FINANCING



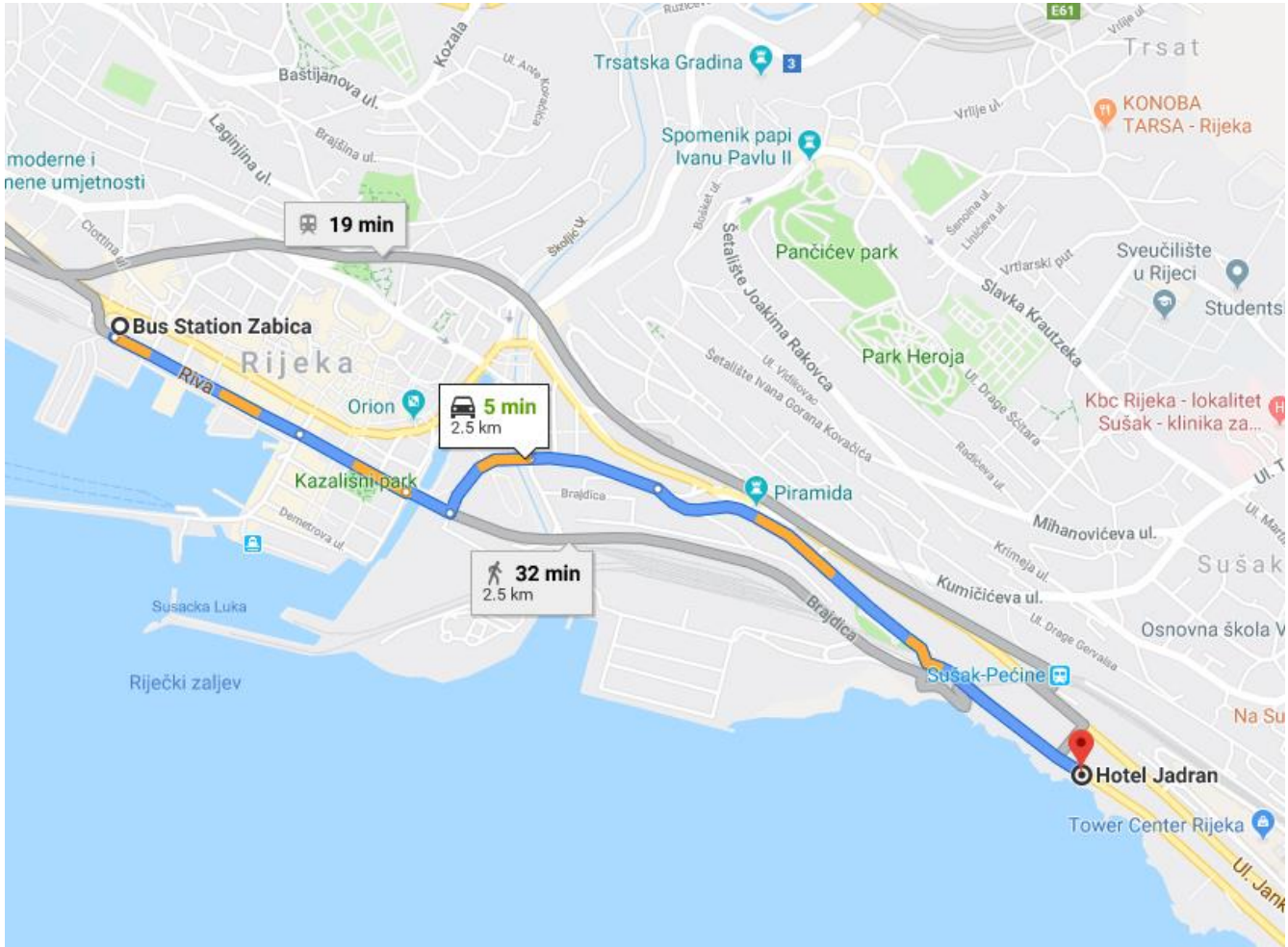


# TEFCE

Towards a European Framework for  
Community Engagement in Higher Education



Bus station Žabica → Hotel Jadran



To reach Hotel Jadran, you can use Rijeka public transport – **bus line 1** (direction: Bivio → Pećine Plumbum).

→ starting bus stop: Žabica

→ bus stop: Jadran (the bus stops in front of the hotel)

## PROJECT FUNDING



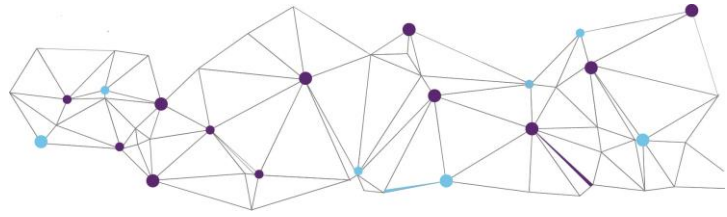
Funded by the  
Erasmus+ Programme  
of the European Union

## PROJECT CO-FINANCING



GOVERNMENT OF THE REPUBLIC OF CROATIA  
Office for Cooperation with NGOs





## VI. LUNCH AND DINNER ARRANGEMENTS

We have planned to enjoy a common lunchtime at the UNIRI Rectorate (costs covered by UNIRI).

In the evening we would like to use the time and have a joint dinner at a local restaurant [NA KANTUNU](#) (each participant covering his/her own costs). Please send with your registration also the information if you want to take part in or not in order to arrange a reservation. Thank you.

## VII. USEFUL WEBSITES/PHONE NUMBERS:

Rijeka Tourist Board: <http://www.visitrijeka.eu/>

Rijeka Public Transport:

[http://www.visitrijeka.eu/Useful\\_Information/Getting\\_Around\\_Rijeka/Public\\_Transport](http://www.visitrijeka.eu/Useful_Information/Getting_Around_Rijeka/Public_Transport)

Cammeo Taxi Rijeka: +385 51 313 313

UNIRI website: <https://uniri.hr/en/home/>

### Contact for further and urgent information:

Ms. Daria Glavan Šćulac

Phone: +385 51 406 523

Mobile phone: +385 91 437 2080

Email: [daria@intra.uniri.hr](mailto:daria@intra.uniri.hr)

Ms. Nina Kolaković

Phone: +385 51 406 598

Email: [nina.kolakovic@uniri.hr](mailto:nina.kolakovic@uniri.hr)

---

### PROJECT FUNDING



Funded by the  
Erasmus+ Programme  
of the European Union

### PROJECT CO-FINANCING



GOVERNMENT OF THE REPUBLIC OF CROATIA  
Office for Cooperation with NGOs