

PILOTING AND PEER LEARNING VISIT #2: TWENTE

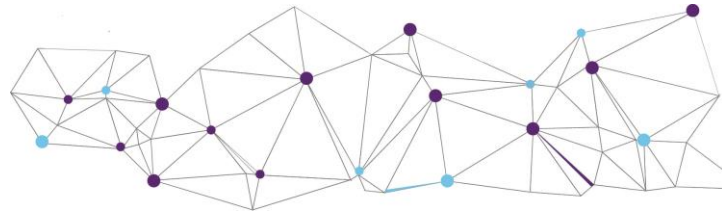
AGENDA

Thursday 27 June 2019 – DesignLab, University of Twente Campus

Building: the Gallery, Hengelosestraat 500 (entrance Pinetumweg), 7521 AN Enschede

www.utwente.nl/en/designlab/

Ca. 8:45	International visitors take bus from Intercity Hotel to UT campus Bus 8 or 9 from Enschede bus station to stop Westerbegraafplaats/UT (map attached)
9:30 – 9:45	Introductory words Welcome to the University of Twente (UT), Vice-President Mirjam Bult (tbc) Overview of TEFCE meeting objectives and agenda; tour-de-table (Thomas Farnell, Institute for the Development of Education)
9:45 – 10:15	Overview of Twente background report Introduction to piloting process at UT and to results of background report Anete Veidemane (UT), Don Westerheijden (UT), & Edwin van de Wiel (Kennispunt RegioTwente)
10:15-10:40	Flagship community engagement projects Flagship project: (tbc) Flagship project: Designlab – tour of the day's environment, by a DreamTeamer (international student)
10:40 – 11:00	Tea/coffee/refreshments break
11:00 – 12:30	Workshop 1: Scoring 'game' : (moderator: Anete Veidemane, UT) Structured discussion on background report findings, discussing which level per sub-dimension, illustrated by projects
12:30 – 13:30	Lunch
13:30 – 15:30	Workshop 1: Scoring 'game' (continued)
15:30 – 15:45	Tea/coffee/refreshments break
15:45 – 17:00	Visiting team reflection on scores/levels per dimension (VII) <ul style="list-style-type: none"> - Agreement/disagreement on scores on subdimensions? Were there 'easy' subdimensions and 'difficult' ones? - Did Twente Team assign the example projects to subdimensions correctly?



17:00 – 17:15	Conclusions and lead-over to Friday: <ul style="list-style-type: none"> - Participants' main takeaway(s) - Open questions?
19:00 – ...	Dinner: Grand Café Fabels, Oude Markt 4, Enschede (à la carte)

Friday 28 June – Regio Twente

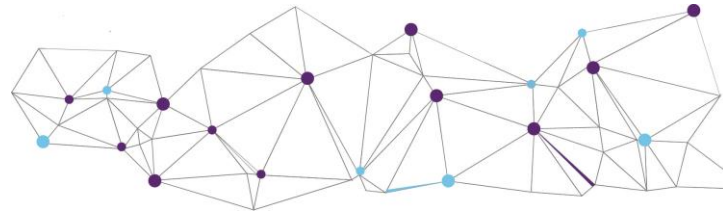
Nijverheidstraat 30, Enschede

9:15 – 9:30	International visitors walk to Regio office
9:30 – 10:00	Introductory words Welcome to RegioTwente, presentation of Regio's flagship project (Edwin van de Wiel, Kennispunt RegioTwente) Overview of day's agenda (Thomas Farnell, Institute for the Development of Education) Review of main takeaways + answers to open questions? (Anete + Don)
10:00 – 11:45	SLIPDOT™ world café: (moderator: Thomas Farnell, Institute for the Development of Education) <i>World-café discussions with broader team (including practitioners) on the overall community engagement of UTwente using the TEFCE "SLIPDOT" framework: Strengths; Lower Intensity; Potential for Development; Opportunities; Threats.</i> Table I: Education Table II: Research Table III: Service Table IV: Students, staff and peers Table V: Management [coffee /tea/refreshments in between]
11:45 – 12:30	Plenary discussion/feedback
12:30 – 13:30	Lunch
13:30 – 15:00	Reflections + recommendations for UT: is profile of UT clear?
15:00 – 15:15	Tea/coffee/refreshments break
15:15 – 16:00	Planning next pilots: TU Dublin + Uni Rijeka
16:00 – 16:15	Closing of Twente visit
19:00 – ...	Dinner: Beiaard's Bistro, Stadsgravenstraat 47, Enschede (set menu, 3 options per course)



TEFCE

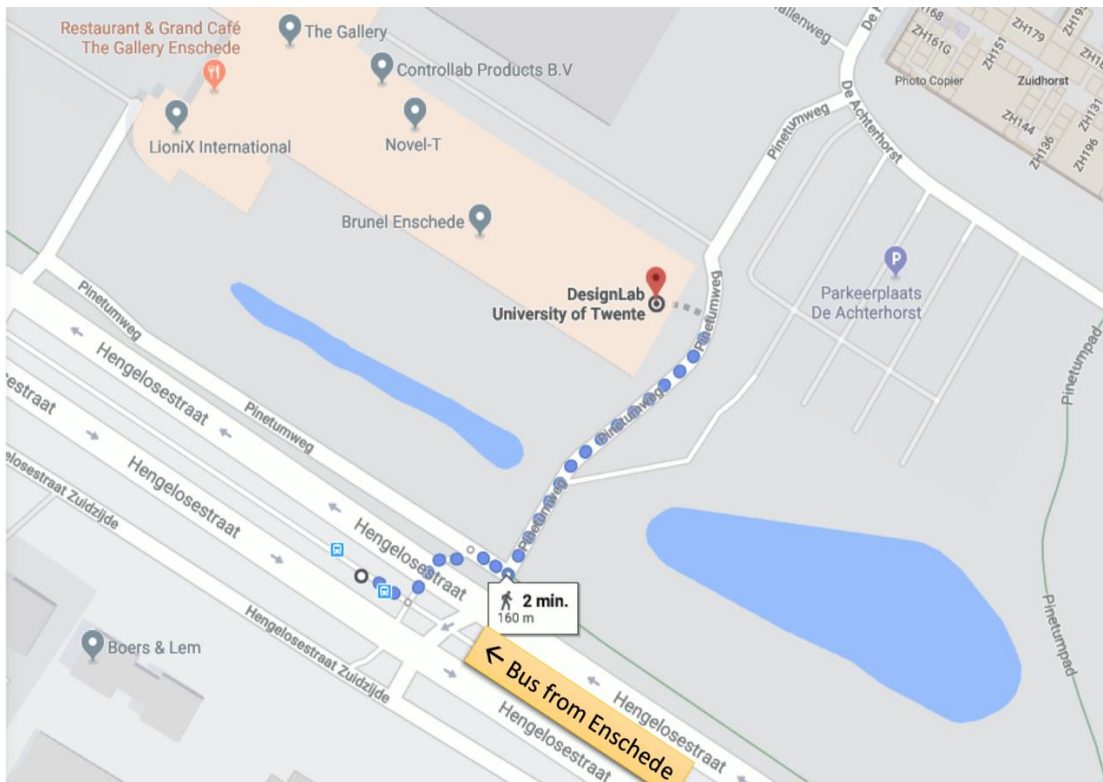
Towards a European Framework for
Community Engagement in Higher Education



Contact

Organising team	CHEPS, University of Twente <ul style="list-style-type: none"> - Don Westerheijden (d.f.westerheijden@utwente.nl) - Anete Veidemane (a.veidemane@utwente.nl) Regio Twente Kennispunt <ul style="list-style-type: none"> - Edwin van de Wiel (e.vandewiel@regiotwente.nl)
Secretarial support	CHEPS, University of Twente <ul style="list-style-type: none"> - Karin van der Tuin and Mirjam Vaanholt (office phone +31 53 489 3263; secr-cheps-bms@utwente.nl)
Hotel	Intercity Hotel Enschede, Willem Wilminkplein 5, 7511 PG Enschede, tel. +31 53 207 0000

Route information 27 June – Bus stop Westerbegraafplaats/UT to Designlab



PROJECT FUNDING



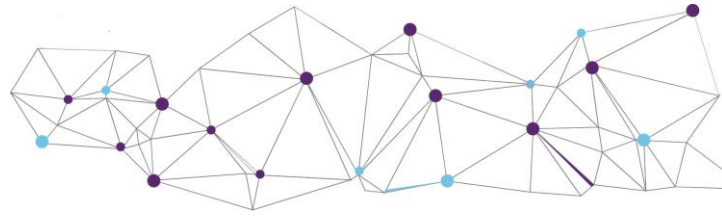
PROJECT CO-FINANCING



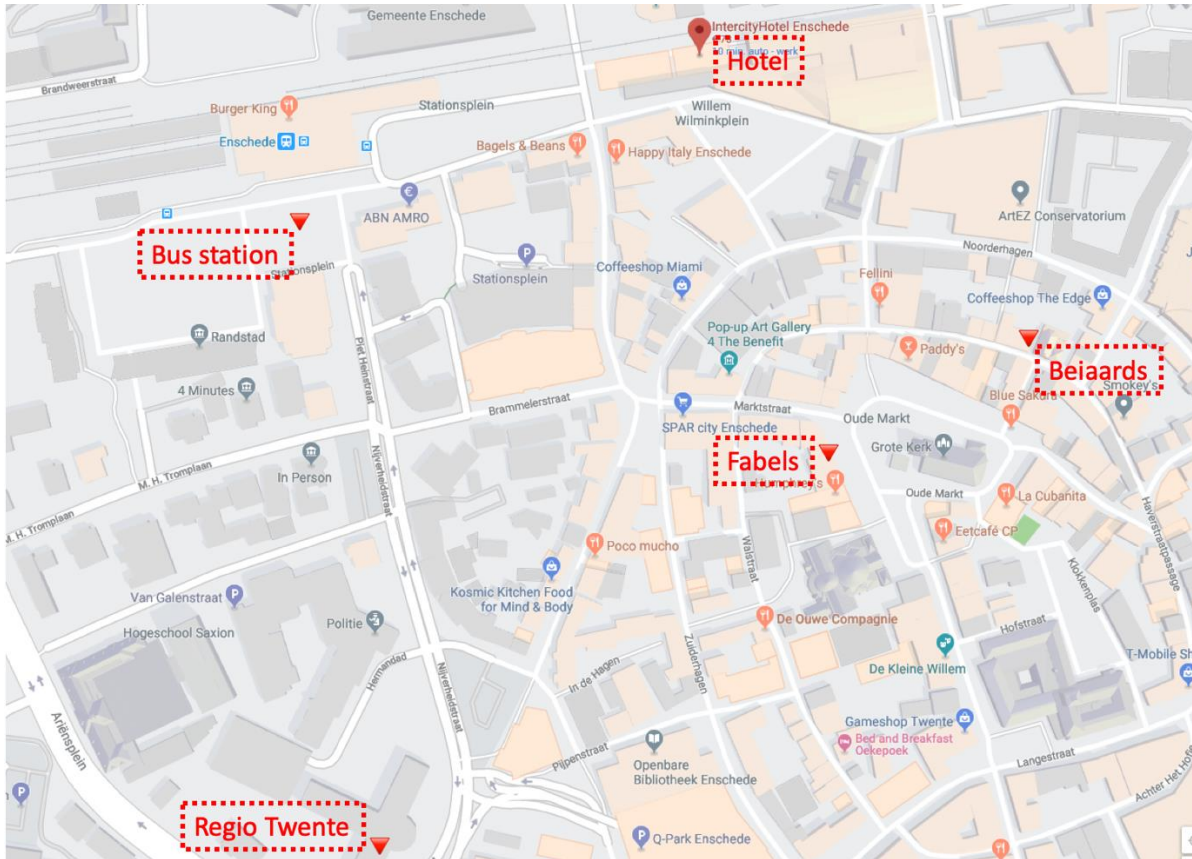


TEFCE

Towards a European Framework for
Community Engagement in Higher Education



Enschede centre



PROJECT FUNDING



Funded by the
Erasmus+ Programme
of the European Union

PROJECT CO-FINANCING



GOVERNMENT OF THE REPUBLIC OF CROATIA
Office for Cooperation with NGOs