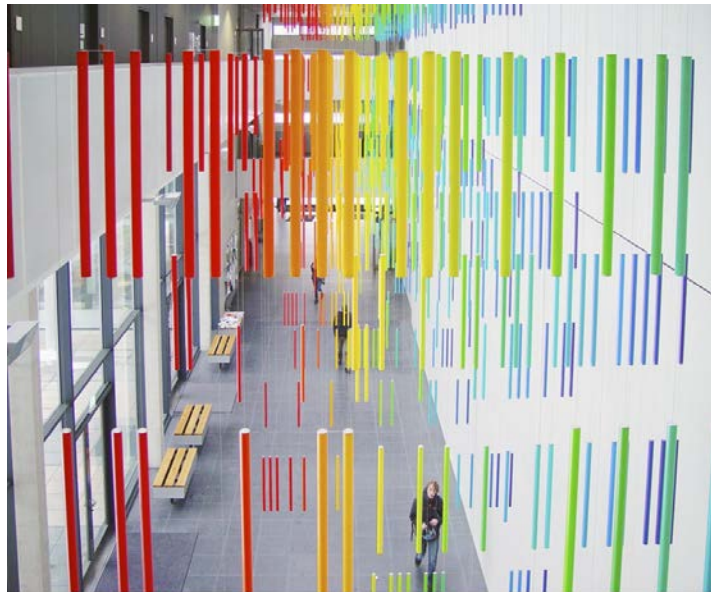
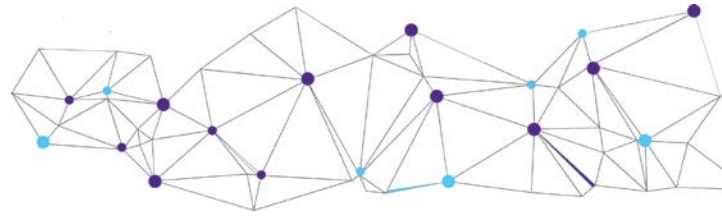




# TEFCE

Towards a European Framework for  
Community Engagement in Higher Education



»Spektralsymphonie der Elemente« im Foyer des Chemie Neubaus.

## Erasmus+ project: "Towards a European Framework for Community Engagement in Higher Education" (TEFCE)

### Practical information (final)

Tuesday 14th – Wednesday 15th May 2019

Technische Universität Dresden, Mommsenstraße 11, 01069 Dresden, Germany

Festive hall in the Rectorate Building ('Festsaal Rektorat')

Host and co-organiser



Co-organiser



Funding



Co-funded by the  
Erasmus+ Programme  
of the European Union

#### PROJECT FUNDING

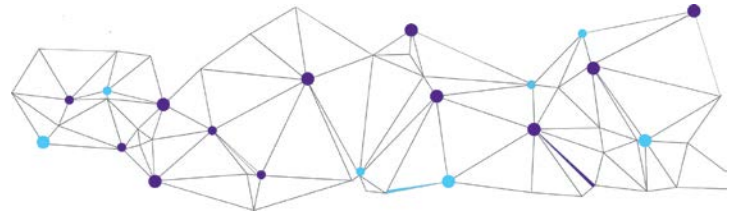


Funded by the  
Erasmus+ Programme  
of the European Union

#### PROJECT CO-FINANCING



GOVERNMENT OF THE REPUBLIC OF CROATIA  
Office for Cooperation with NGOs



Thank you for your registration for the TEFCE Piloting Visit in Dresden.

We are looking forward welcoming you in Dresden and wish you a safe journey.

## **I. ELIGIBLE COSTS COVERED BY THE TEFCE PROJECT**

Your expenses for travel costs and costs of stay will be covered by the planned project costs of your institution. Due to the regularly reporting procedure the costs of travel and stay will be reimbursed together with other expenses of your institution as foreseen under Erasmus+ KA3. For reporting process it is necessary to keep all original documents since TUD can only accept expenses as eligible if it is incurred, paid, reasonable and directly project related, and if it is matched by adequate supporting documents. Please keep all original hotel invoices, invoices for other relevant costs, boarding passes, tickets, fees etc. in the files of your institution's travel claim form.

Expenses limitation: Please note that we had to plan all project related meetings in advance and prices are changing. The Pilot Visit was planned with 400 EUR travel costs and 120 EUR costs per day/per person daily allowance. As you have to report actual costs the total expenses per person and institution may change. As our budget is limited please keep the limits of planned costs into account.

## **II. ACCOMMODATION ARRANGEMENTS**

You are generally free to select a hotel of your own choice and make the reservation yourself. However, for your convenience, we have arranged a contingency at the Ibis Dresden Zentrum Hotel (59 EUR single room and 79 EUR double with 2 persons; breakfast included). We recommend this option due to the close proximity of this hotel both to the train station (which has direct train transfers to the airport) and to the meeting location (bus/tram transfer 15, 30 minutes walking distance, respectively).

The contingent arrangement is open until 12th APRIL 2019. Please contact the hotel directly via email or phone under the KEYWORD: TEFCE.

Further hotel information:

Ibis Dresden Zentrum Hotel – Prager Strasse 5 – 01069 Dresden / Germany

Phone: +49 351 48564856 | Email: [reservierung@ibis-dresden.de](mailto:reservierung@ibis-dresden.de) Web: <https://www.ibis-dresden.de/en/>

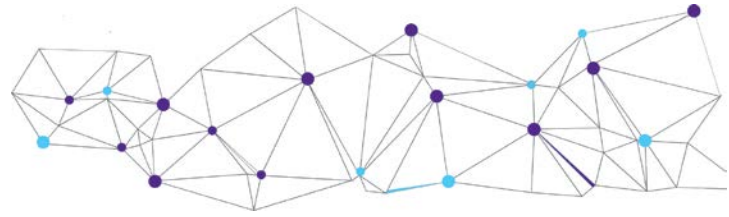
---

### **PROJECT FUNDING**



### **PROJECT CO-FINANCING**





### III. TRAVEL AND LOCAL TRANSFER INFORMATION

**Dresden Airport** (10 km from Dresden city centre) has flights to and from major cities in Europe. The other airports close to Dresden are: Berlin, Germany (180 km from Dresden) and Praha, Czech Republic (150 km). More information: <http://www.dresden-airport.de/?newLanguage=en#>

**Dresden Airport – City Center:** There is a possibility of taking a local train (“S-Bahn”) from Dresden Airport to Dresden main train station – Dresden Hauptbahnhof / Dresden Hbf – every 30 minutes. (takes ca. 20 min) The cost of the train trip is EUR 2,40 one way – valid for one hours for train, bus, tram. Tickets must be bought and validated before (on the platform) getting on the train. If you want to use tram or bus even to the university it is recommendet to buy a 4-trip-ticket (8,60 EUR).

If your internal travel regulation allows you may also take a taxi from the airport to your hotel taxis will be waiting in front of the airport. All taxis are officially licensed and charge identical fees per kilometre and minute. Depending on traffic volume the trip will cost between EUR 30 and 40.

**Coming to Dresden by Bus:** Dresden is connected with an European bus net. Flixbus offers quite got prices and comfort.

[https://www.flixbus.com/bus/dresden?wt\\_eid=2151688579300566040&wt\\_t=1516885795292&g\\_a=2.79868565.38151187.1516885793-955582385.1516885793](https://www.flixbus.com/bus/dresden?wt_eid=2151688579300566040&wt_t=1516885795292&g_a=2.79868565.38151187.1516885793-955582385.1516885793)

**Main Railway Station – Hotel:** The easiest way to get to the Ibis Dresden Zentrum Hotel (in old maps called Ibis Bastei) is to walk from the railway station. See the small map below.

**Hotel – Meeting Place:** The Ibis Dresden Zentrum Hotel is situated in the center of Dresden and in a 30 minutes walking distance to our meeting place – Rectorate TU Dresden.

We recommend to use BUS 66 (Direction: MOCKRITZ) from Station: HAUPTBAHNHOF to Station: MOMMSENSTRASSE (3 Stations only). It takes ca. 5 min and busses have a turnus of 10 min. If you prefer to have a walk in the morning it will take ca. 30-40 min. See the small map below.

---

#### PROJECT FUNDING



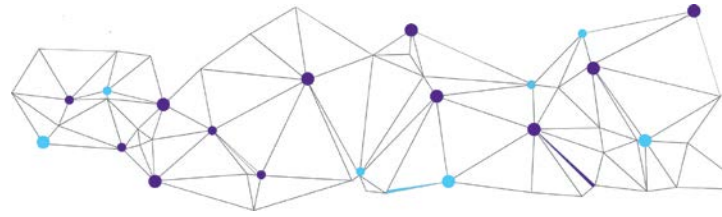
#### PROJECT CO-FINANCING





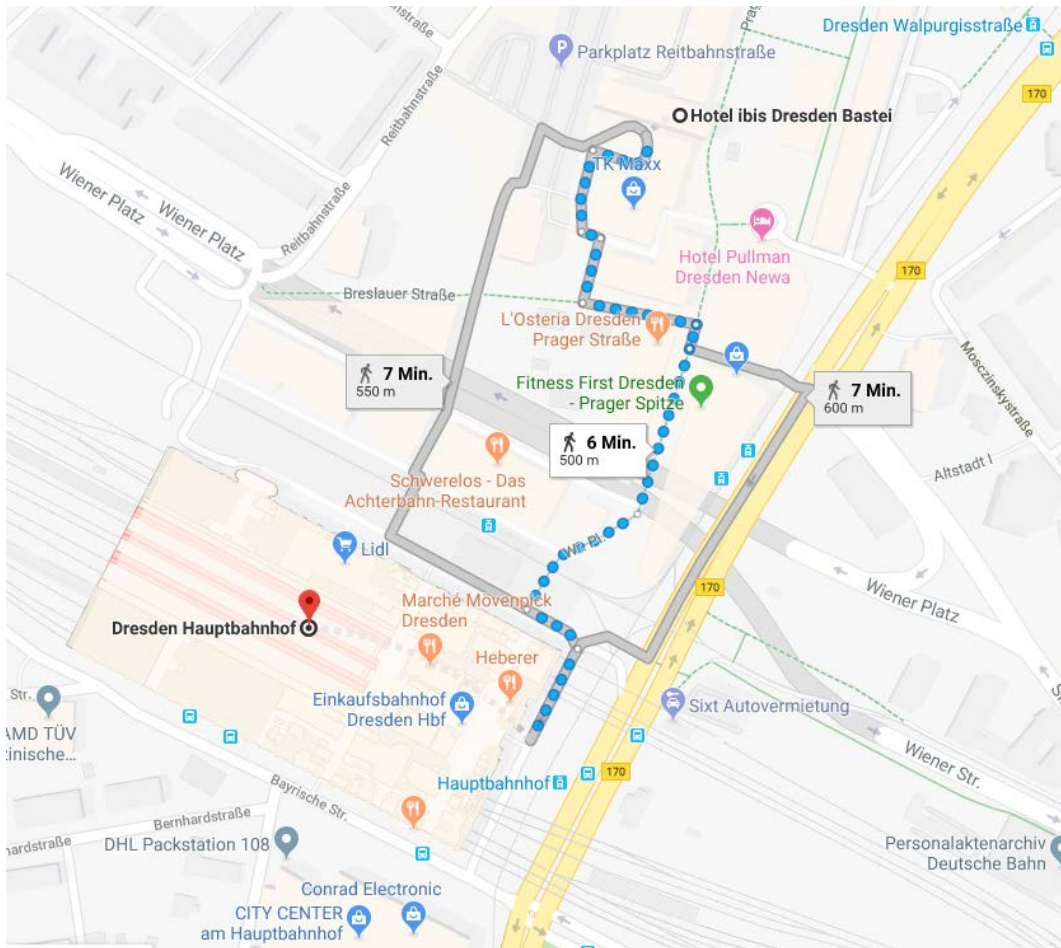
# TEFCE

Towards a European Framework for  
Community Engagement in Higher Education



## IV. MAPS

### Railway Station → Hotel



#### PROJECT FUNDING

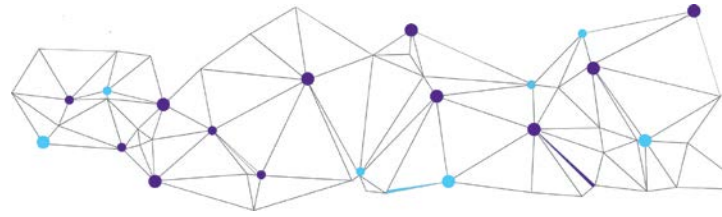


Funded by the  
Erasmus+ Programme  
of the European Union

#### PROJECT CO-FINANCING



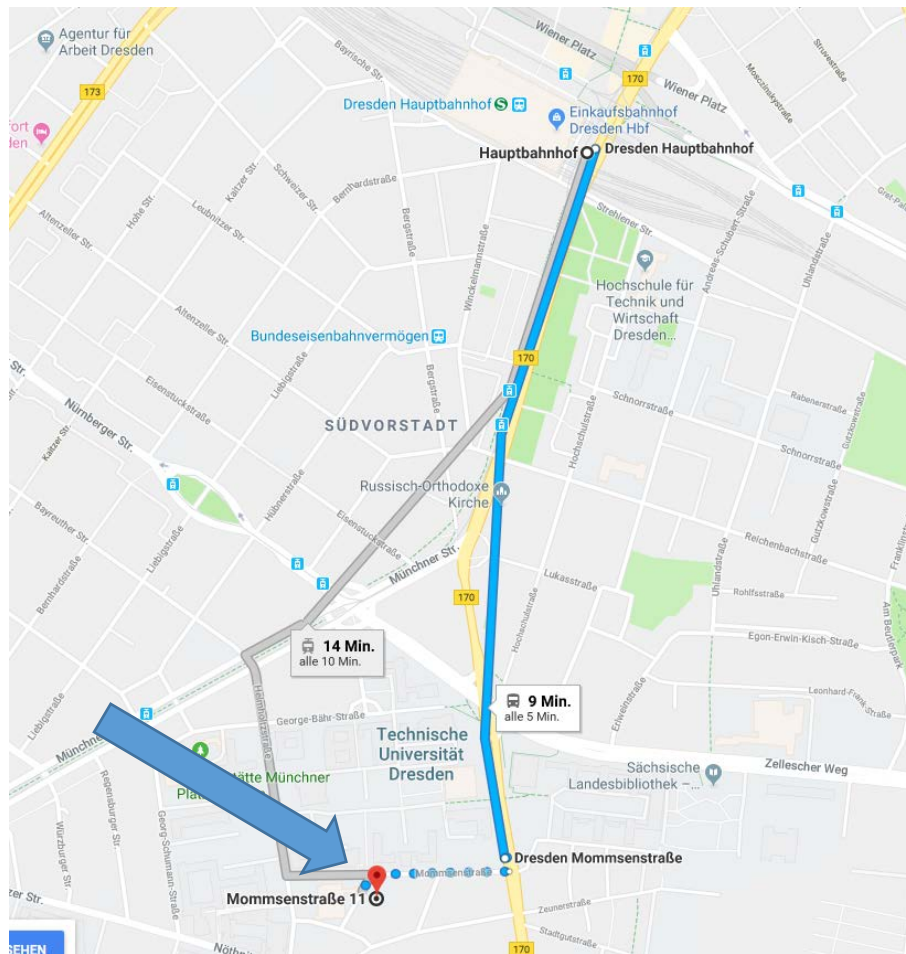
GOVERNMENT OF THE REPUBLIC OF CROATIA  
Office for Cooperation with NGOs



## Hotel → TU Dresden Meeting Room

Technische Universität Dresden, Mommsenstraße 11, 01069 Dresden, Germany

We recommend to use BUS 66 (Direction: MOCKRITZ) from Station: HAUPTBAHNHOF to Station: MOMMSENSTRASSE (3 Stations only). It takes ca. 5 min and busses have a turnus of 10 min. If you prefer to have a walk in the morning it will take ca. 30-40 min.



### PROJECT FUNDING

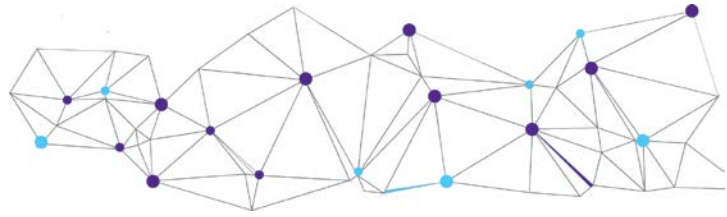


Funded by the  
Erasmus+ Programme  
of the European Union

### PROJECT CO-FINANCING



GOVERNMENT OF THE REPUBLIC OF CROATIA  
Office for Cooperation with NGOs

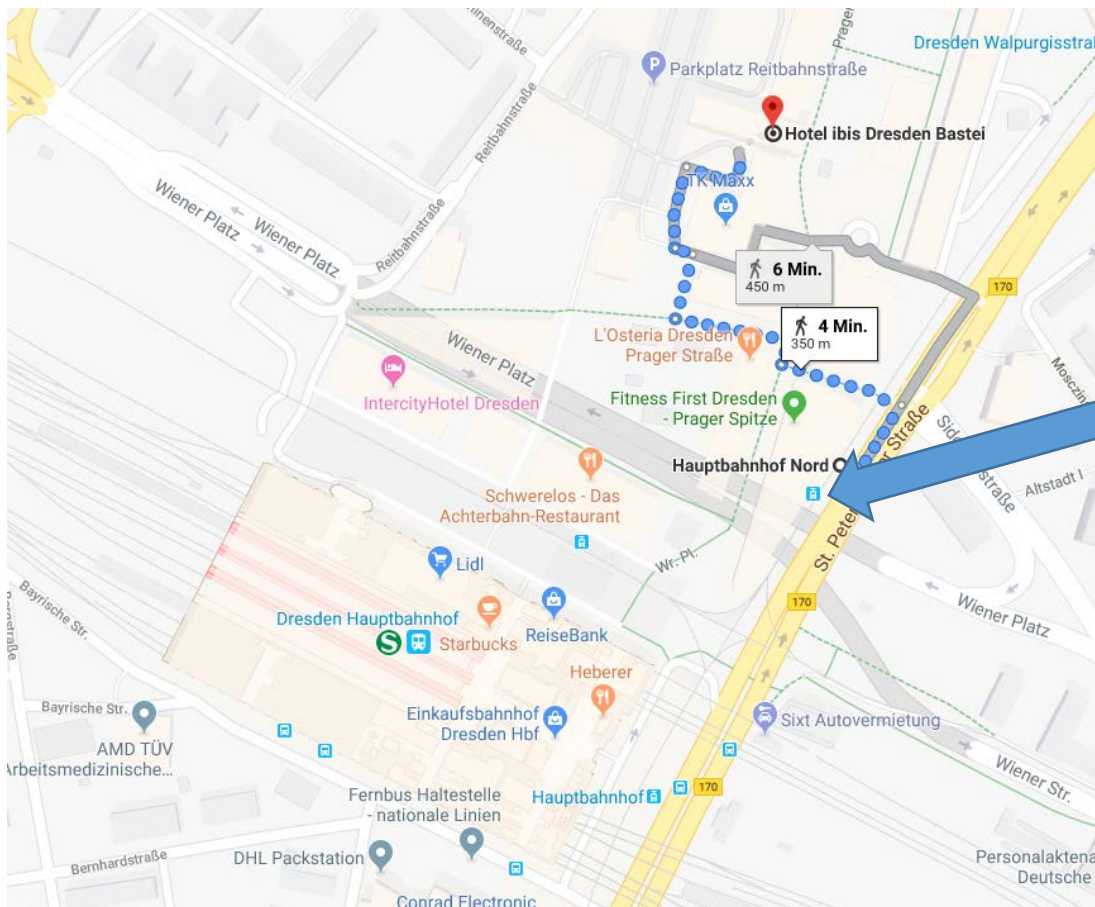


## Hotel → Joint Dinner 14th May 2019

Weinzentrale, Hoyerswerdaer Straße 26, 01099 Dresden, Germany

We recommend to use tram No 11 (Direction: BÜHLAU) from HAUPTBAHNHOF NORD and go to station BAUTZNER/ROTHENBURGER STR. It takes ~ 16 min.

!! The Station is on the north-east side of the main railway station at St. Petersburg Street !! (in front of the shopping centers Prager Spitze)

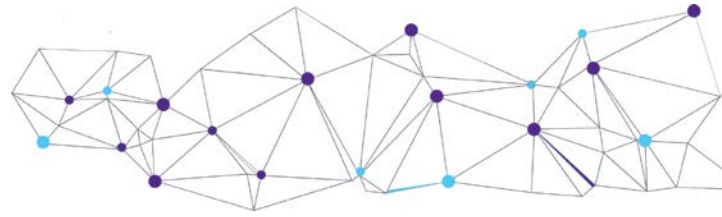


### PROJECT FUNDING

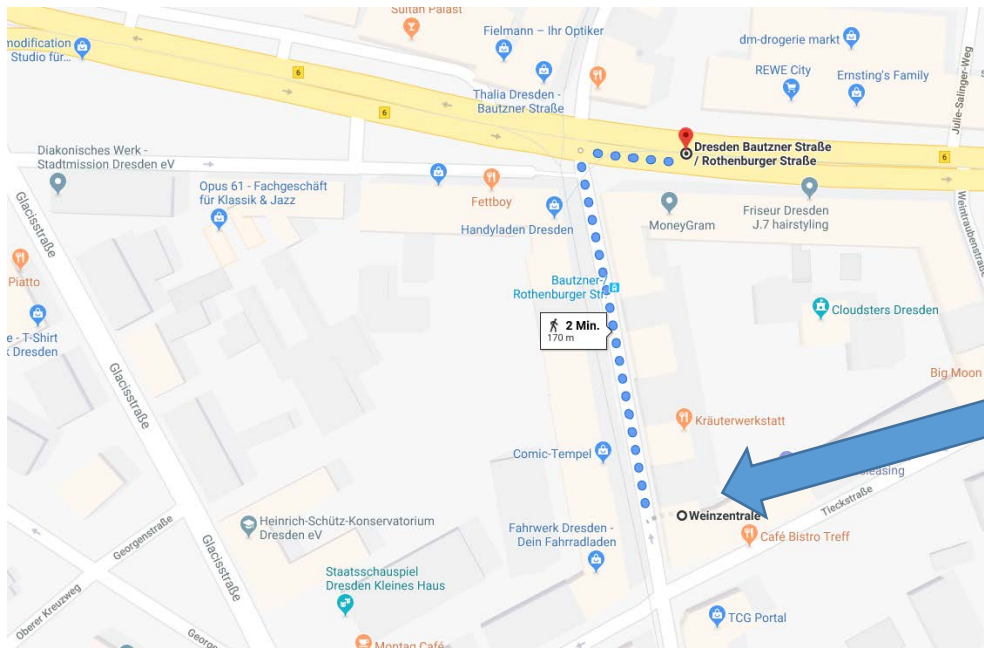


### PROJECT CO-FINANCING





From the tram station it is a 2 minutes walk only.



## Hotel → Joint Dinner 15th May 2019

Carolasschlösschen, Querallee 7, 01219 Dresden, Germany

Use tram No 10 (Direction: STRIESEN) from HAUPTBAHNHOF (north side) and go to station GEORG-ARNOLD-BAD. It takes ~ 5 min.

From the station you have to walk for ~ 15 min through the park „Großer Garten“. I am sure you will enjoy it.

If you choose to walk the whole distance (~ 3 km) it will take ca. 40 min.

### PROJECT FUNDING



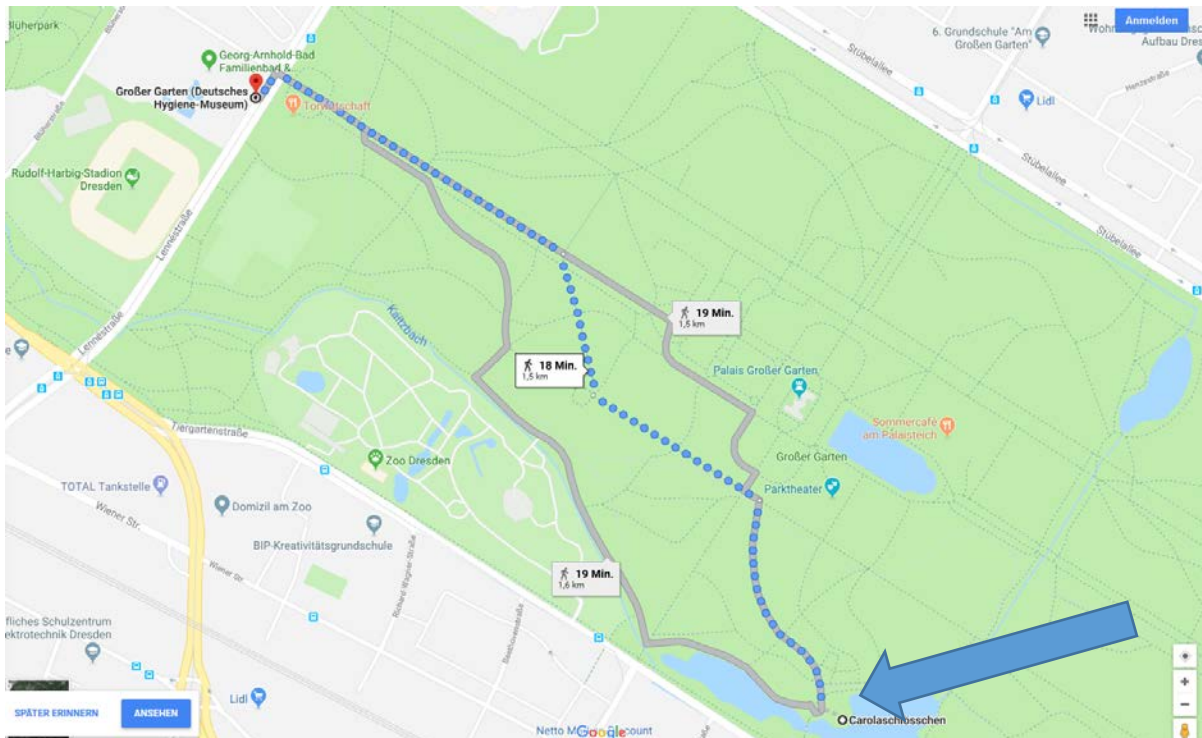
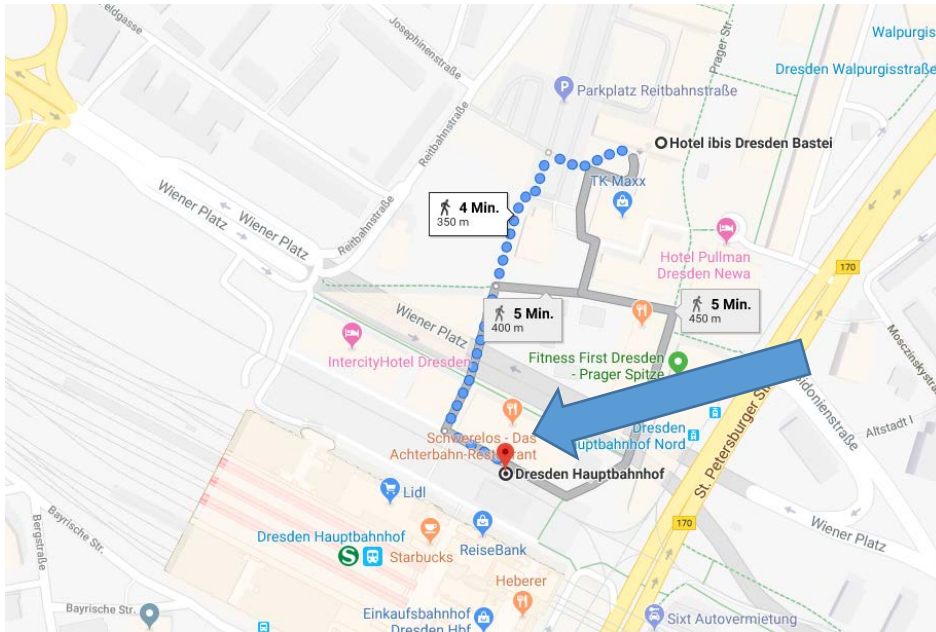
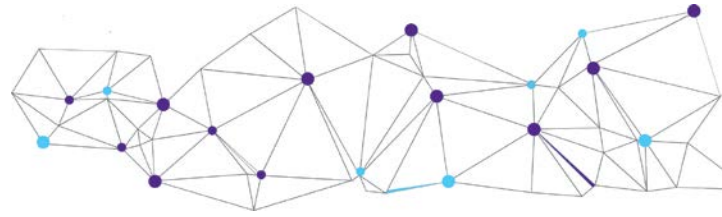
### PROJECT CO-FINANCING





# TEFCE

Towards a European Framework for  
Community Engagement in Higher Education



## PROJECT FUNDING



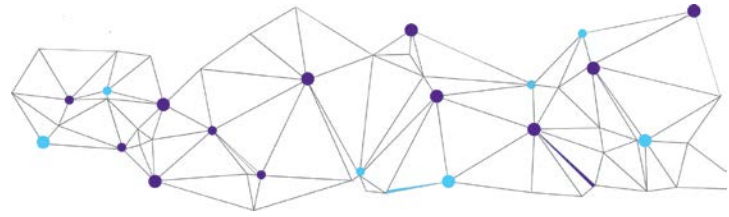
Funded by the  
Erasmus+ Programme  
of the European Union

## PROJECT CO-FINANCING



GOVERNMENT OF THE REPUBLIC OF CROATIA  
Office for Cooperation with NGOs





## V. LUNCH AND DINNER ARRANGEMENTS

We have planned to enjoy a common lunchtime at the university mensa ALTE MENSA quite close to the meeting venue. You will get a voucher for the lunch paid by TU Dresden.

In the evening we would like to use the time and have a joint dinner at a local restaurant (each participants covering his/her own costs). Please send with your registration also the information if you want to take part in or not in order to arrange a reservation. Thank you.

## VII. USEFUL WEBSITES

Dresden Airport: <http://www.dresden-airport.de/?newLanguage=en#>

Ibis Dresden Zentrum Hotel: <https://www.ibis-dresden.de/en/>

Dresden for tourists: [www.dresden-tourist.de](http://www.dresden-tourist.de)

Dresden Public Transport Schedule: [www.dvb.de](http://www.dvb.de)

DVB Journey planner: <https://www.dvb.de/en-gb/timetable/journey-planner/>

Taxi service in Dresden: Tel.: +49 351 211 211 or +49 351 88 888 888

### Contact for further information:

Ines Schmidt

Phone – will be relayed with my mobile during the meeting: +49 351 463 42162

E-Mail: [ines.schmidt@tu-dresden.de](mailto:ines.schmidt@tu-dresden.de)

---

#### PROJECT FUNDING



#### PROJECT CO-FINANCING

