

## Coffee

---

Espresso 2.5

---

Long black / Americano 2.7

---

Piccolo / Cortado 2.7

---

Flat white / Cappuccino 2.8

---

Latte 2.8

---

Filter 2.5

---

Iced +50p

---

Oat milk +50p

---

## Tea

---

Breakfast 2.6

---

Earl grey 2.6

---

Green 2.6

---

Herbal 2.6

---

## Other

---

Chai latte 3

---

Turmeric latte 4

---

Hot chocolate 4

---

## Wine / Beer (see wine list for more)

---

House white 6

---

House red 6

---

Rose 7.5

---

Orange 7.5

---

Fizz 6

---

Cider 5

---

Lager 5

---

IPA 5

---

## Soft drinks

---

Karma cola 3

---

Gingerella 3

---

Fresh juice 4

---

Lemonade 3

---

## Brunch cocktails

---

Mimosa 7

---

Bloody mary 7

---

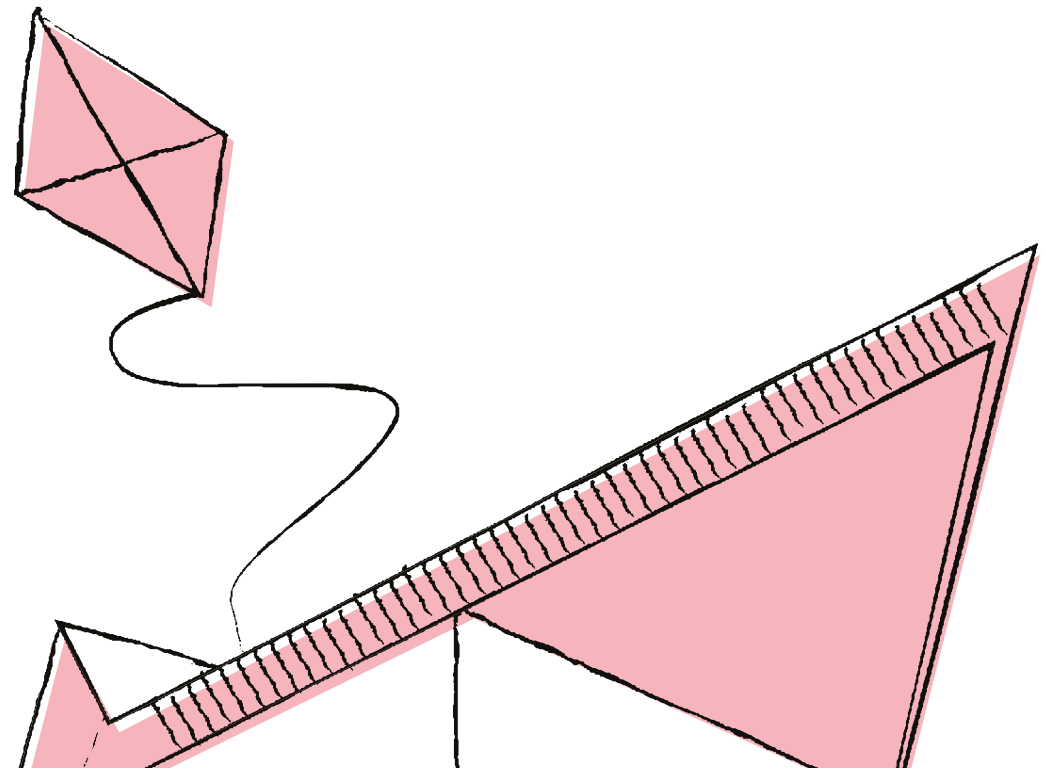
Rosemary gin fizz 8

---

Negroni 8

---

CRISPIN



## Baked Goods

---

<b>Croissant/ pain au chocolat / apple turnover / banana flapjack</b>	<b>2.7</b>
<b>Banana bread / almond brownie / carrot cake</b>	<b>3.5</b>

---

## Brunch plates

---

<b>Parmesan scrambled eggs, chorizo, avocado, sourdough</b>	<b>12</b>
add black pudding 3	
<b>French toast, vanilla ice cream, seasonal fruit, pistachio (v)</b>	<b>11</b>
add bacon 3.5 add maple syrup 2.5	
<b>Old spot sausage, fried egg, tomato, beans, bacon, brown sauce</b>	<b>11</b>
add black pudding 3	
<b>Avocado on sourough, halloumi, chilli salt, chives, lime (v)</b>	<b>10.5</b>
add egg 2, add smoked salmon 4	
<b>Coconut daal, squash, coconut yoghurt, herb sauce, chapati (vg)</b>	<b>9</b>
add fried egg 2, add halloumi 3	
<b>Three cheese &amp; onion toastie, fried egg, Berkswell, house ketchup</b>	<b>10</b>
add smoked ham 3	
<b>House-made baked beans, burrata, basil, pine nuts, sourdough (v)</b>	<b>10</b>
add chorizo 4	

---

Please let us know of any food allergies or dietary requirements.  
A discretionary 12.5% service charge will be added to your bill.  
£1 will be added to your bill for filtered or sparkling BELU water, all of which goes to the Water Aid Foundation charity.  
We only accept card payments.

## Lighter plates

---

<b>Overnight oats, coconut yoghurt, toasted seeds, seasonal fruit</b>	<b>6.5</b>
<b>Toasted banana bread, tahini, London honey</b>	<b>5.5</b>

---

## Extras

---

<b>Avocado</b>	<b>3</b>	<b>Fried egg</b>	<b>2</b>
<b>Halloumi</b>	<b>3</b>	<b>Bacon</b>	<b>3.5</b>
<b>Smoked salmon</b>	<b>4</b>	<b>Black pudding</b>	<b>3</b>
<b>Sourdough</b>	<b>2</b>	<b>Chorizo</b>	<b>4</b>

---

\*All dishes are available with gluten-free bread

---

Visit [www.crispinlondon.com](http://www.crispinlondon.com) for more information on upcoming events, private hire, and more. @crispin\_e1  
Our suppliers: HG Walter, Dusty Knuckle, Estate Dairy, Foodchain, Nattoora, Albion Fine Foods, Netherend Farm, Secret Smokehouse, Otros Vinos, Newcomer Wines, Les Caves de Pyrenes, Clarence Court, Assembly Coffee.