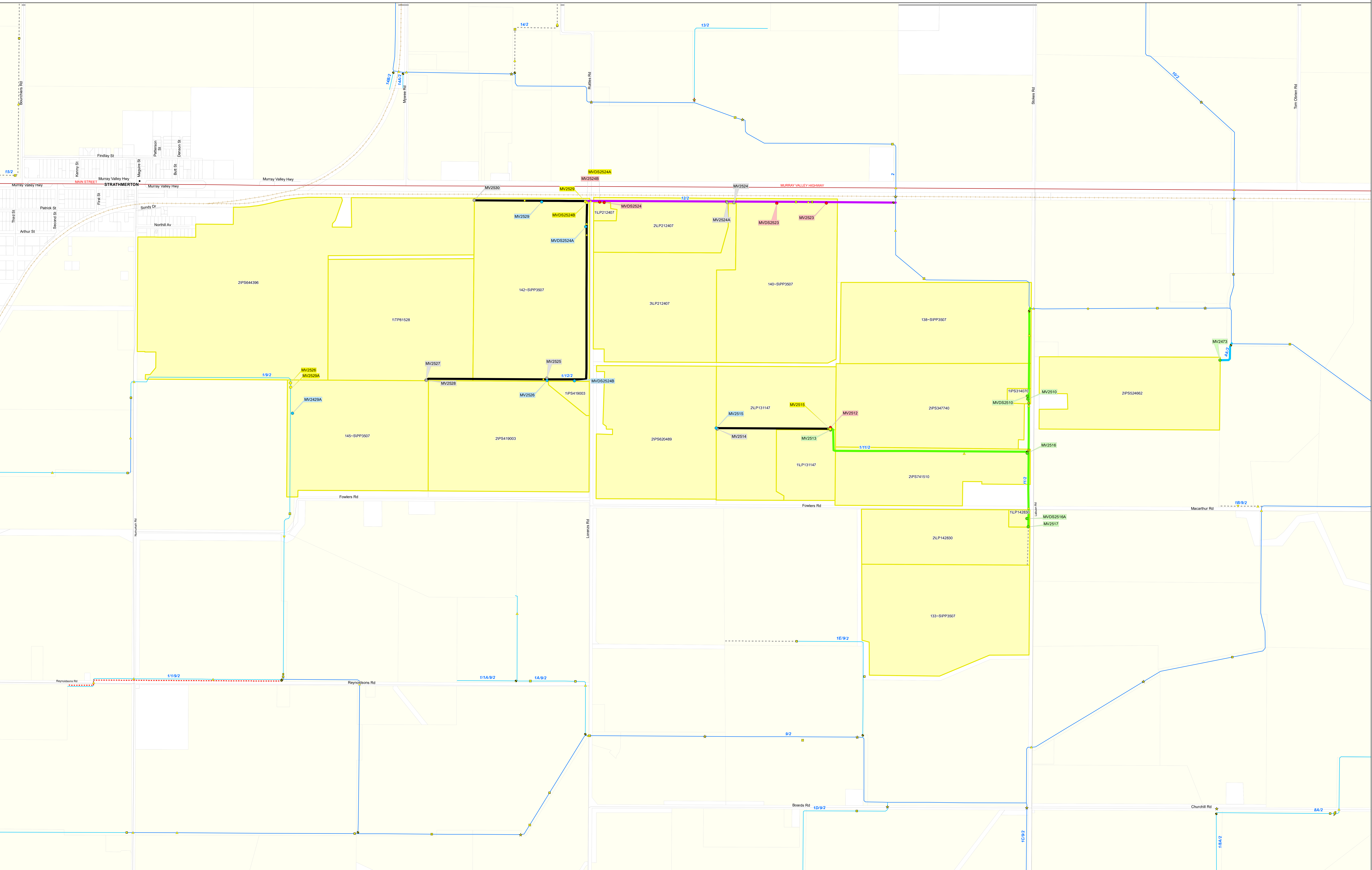


# Reconfiguration Plan: MV14 RP03



**IR185583**  
06 Dec 2019

GOULBURN-MURRAY WATER  
40 CASEY STREET (PO BOX 165)  
TATURA VIC 3616  
gmsupport@gmwater.com.au

Service Point Modernisation Action	Channel Modernisation Action	G-MW Irrigation Structures	Electrical Crossing	Offtake	Subway	Channel Network	Transport	Waterway	Reservoir	Lake	DCRP Customer Parcels
<ul style="list-style-type: none"> <li>Retain</li> <li>Relocate</li> <li>Replace</li> <li>Rationalise</li> <li>Relocation Point</li> </ul>	<ul style="list-style-type: none"> <li>Retain channel with no modernisation</li> <li>Retain channel with remediation</li> <li>Retain channel with modernisation</li> <li>Decommission channel</li> </ul>	<ul style="list-style-type: none"> <li>Abandoned Structure</li> <li>Bridge</li> <li>Culvert</li> <li>Drainage Inlet</li> </ul>	<ul style="list-style-type: none"> <li>Electrical Crossing</li> <li>Farm Irrigation Crossing</li> <li>Flume</li> <li>Footbridge</li> <li>Monitoring Station</li> </ul>	<ul style="list-style-type: none"> <li>Offtake</li> <li>Outfall</li> <li>Pump Station</li> <li>Regulator</li> <li>Regulator Combine</li> </ul>	<ul style="list-style-type: none"> <li>Subway</li> <li>Syphon</li> <li>Valve - Isolation</li> <li>Weir</li> </ul>	<ul style="list-style-type: none"> <li>Backbone</li> <li>Non-Backbone</li> <li>Decommissioned</li> <li>Pipeline</li> <li>Proposed Pipeline</li> </ul>	<ul style="list-style-type: none"> <li>Freeway</li> <li>Highway</li> <li>Major Road</li> <li>Semi-Major Road</li> <li>Minor Road</li> </ul>	<ul style="list-style-type: none"> <li>Waterway</li> <li>Reservoir</li> <li>Lake</li> </ul>	<ul style="list-style-type: none"> <li>DCRP Customer Parcels</li> <li>Other Customer Properties</li> <li>Property/Land Not Serviced</li> </ul>		

**SCALE AT A0 1:6,290**

0 0.15 0.3 0.6 km

The content of this product is provided for information purposes only. No claim is made as to the accuracy or authenticity of the content of the product. In no event will G.M.W. its agents, instrumentalities and employees be liable for the accuracy of the information contained within this product nor its use of reliance placed on it. The information used within this product is provided on the basis that all persons accessing the information undertake responsibility for assessing the relevance and accuracy of its content.