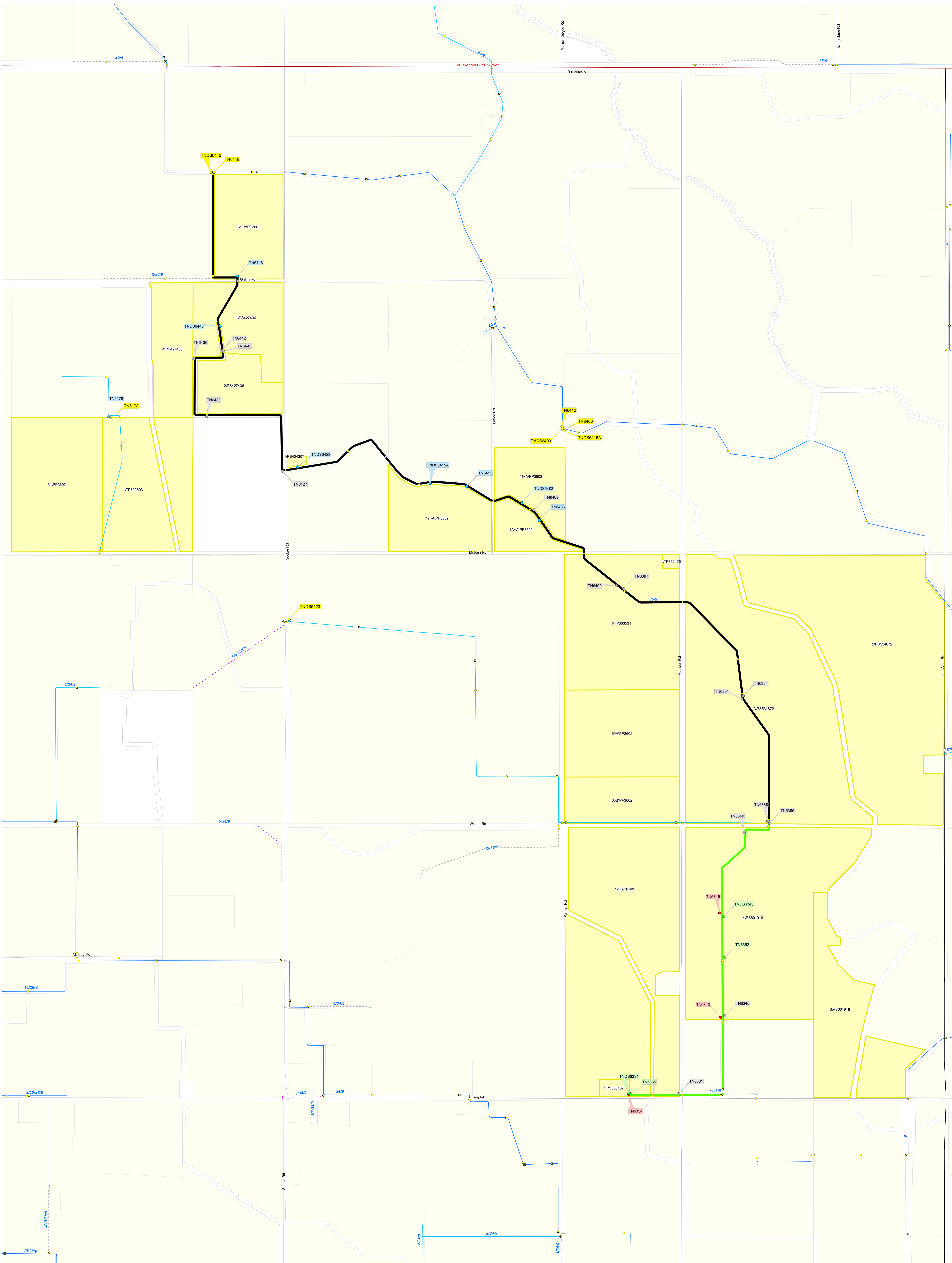
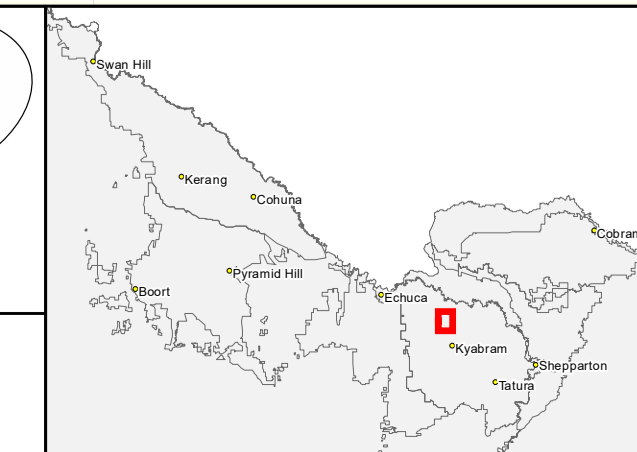


Reconfiguration Plan: CG26 RP02



IR185583
25 NOV 2019
GOULBURN-MURRAY WATER
40 CASEY STREET (PO BOX 165)
TATURA VIC 3616
gisupport@gmw.com.au



Service Point Modernisation Action	Channel Modernisation Action	G-MW Irrigation Structures	Electrical Crossing	Offtake	Subway	Channel Network	Transport	Waterway
Retain	Retain channel with no modernisation	Abandoned Structure	Electrical Crossing	Offtake	Subway	Backbone	Freeway	Waterway
Relocate	Retain channel with remediation	Bridge	Farm Irrigation Crossing	Outfall	Syphon	Non-Backbone	Highway	Lake
Replace	Retain channel with modernisation	Culvert	Flume	Pump Station	Valve - Isolation	Decommissioned	Major Road	DCRP Customer Parcels
Rationalise	Pipeline	Drainage Inlet	Footbridge	Regulator	Weir	Pipeline	Semi-Major Road	Other Customer Properties
Relocation Point	Decommission channel		Monitoring Station	Regulator Combine		Proposed Pipeline	Minor Road	Property/Land Not Served

SCALE AT A0 1:6,945

0 0.175 0.35 0.7 km

The content of this product is provided for information purposes only. No claim is made as to the accuracy of authenticity of the content of the product. In no event will G-MW, its agents, instrumentalities and employees be liable for the accuracy of the information contained within this product nor its use of reliance placed on it. The information used within this product is provided on the basis that all persons accessing the information undertake responsibility for assessing the relevance and accuracy of its content.