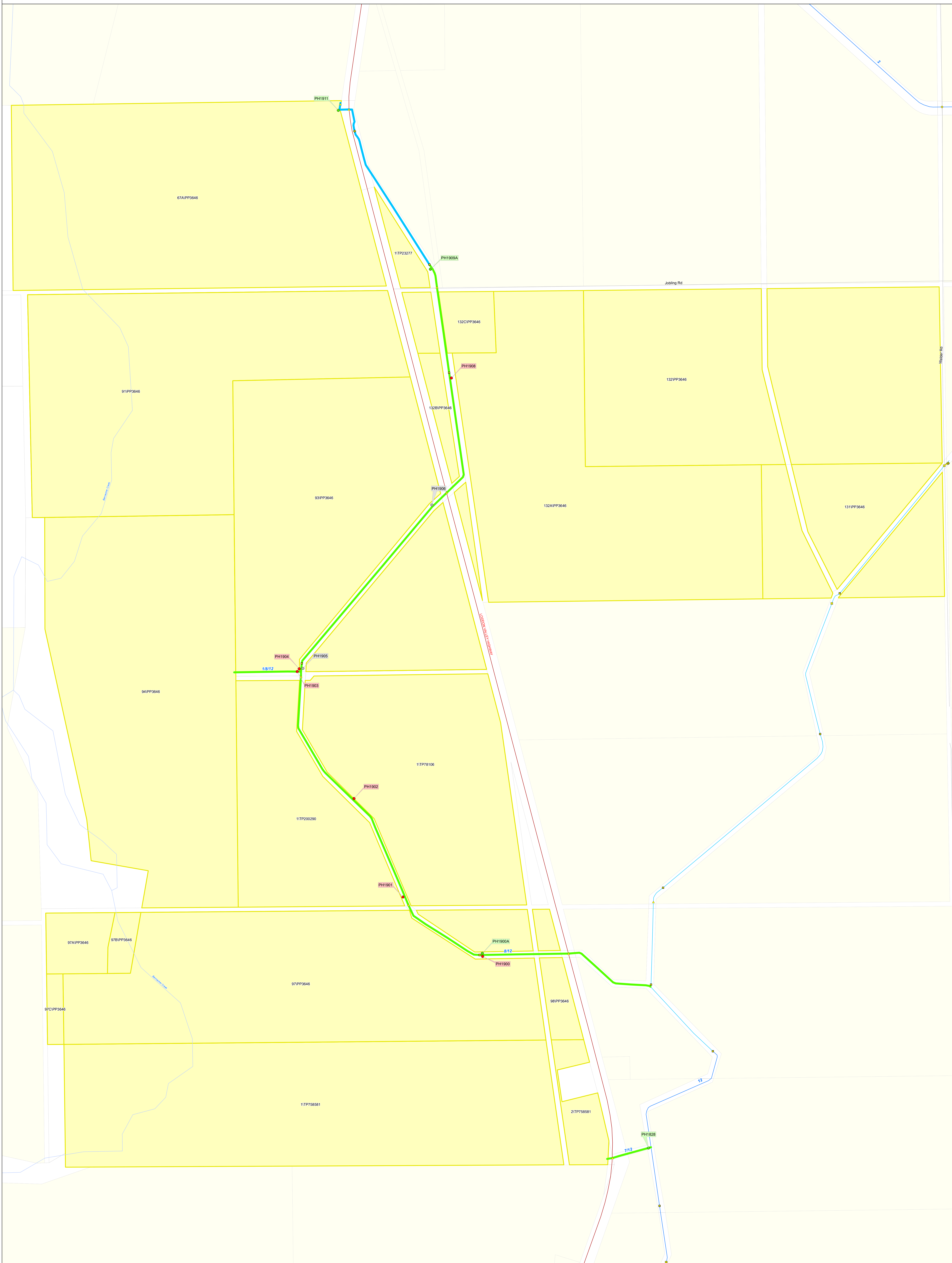

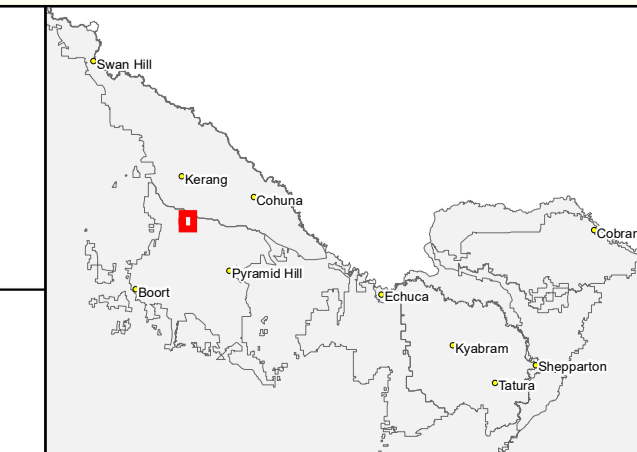


# Reconfiguration Plan: LV08A RP08



  
**IR185583**  
 03 JUN 2019  
 GOULBURN-MURRAY WATER  
 40 CASEY STREET (PO BOX 165)  
 TATURA VIC 3616  
 Ph (03) 5823 5500 Fax (03) 58245827  
 gmsupport@gmwater.com.au



Service Point Modernisation Action	Channel Modernisation Action	G-MW Irrigation Structures	Electrical Crossing	Offtake	Subway	Channel Network	Transport	Waterway
● Retain	— Retain channel with no modernisation	◆ Abandoned Structure	◆ Electrical Crossing	◆ Outfall	◆ Subway	— Backbone	— Freeway	— Waterway
● Relocate	— Retain channel with remediation	◆ Bridge	◆ Farm Irrigation Crossing	◆ Pump Station	◆ Syphon	— Non-Backbone	— Highway	■ Lake
● Replace	— Retain channel with modernisation	▲ Culvert	◆ Flume	◆ Valve - Isolation	◆ Weir	--- Decommissioned	— Major Road	■ DCRP Customer Parcels
○ Rationalise	— Pipeline	◆ Drainage Inlet	◆ Footbridge	◆ Regulator	◆ Weir	--- Pipeline	— Semi-Major Road	■ Other Customer Properties
● Relocation Point	— Decommission channel	◆ Monitoring Station	◆ Regulator Combine	◆ Regulator Combine	◆ Proposed Pipeline	--- Minor Road	— Minor Road	■ Property/Land Not Serviced

**SCALE AT A0 1:5,230**  
 0 0.125 0.25 0.5 km  
 The content of this product is provided for information purposes only. No claim is made as to the accuracy or authenticity of the content of the product. In no event will G-MW, its agents, instrumentalities and employees be liable for the accuracy of the information contained within this product nor its use of reliance placed on it. The information used within this product is provided on the basis that all persons accessing the information undertake responsibility for assessing the relevance and accuracy of its content.