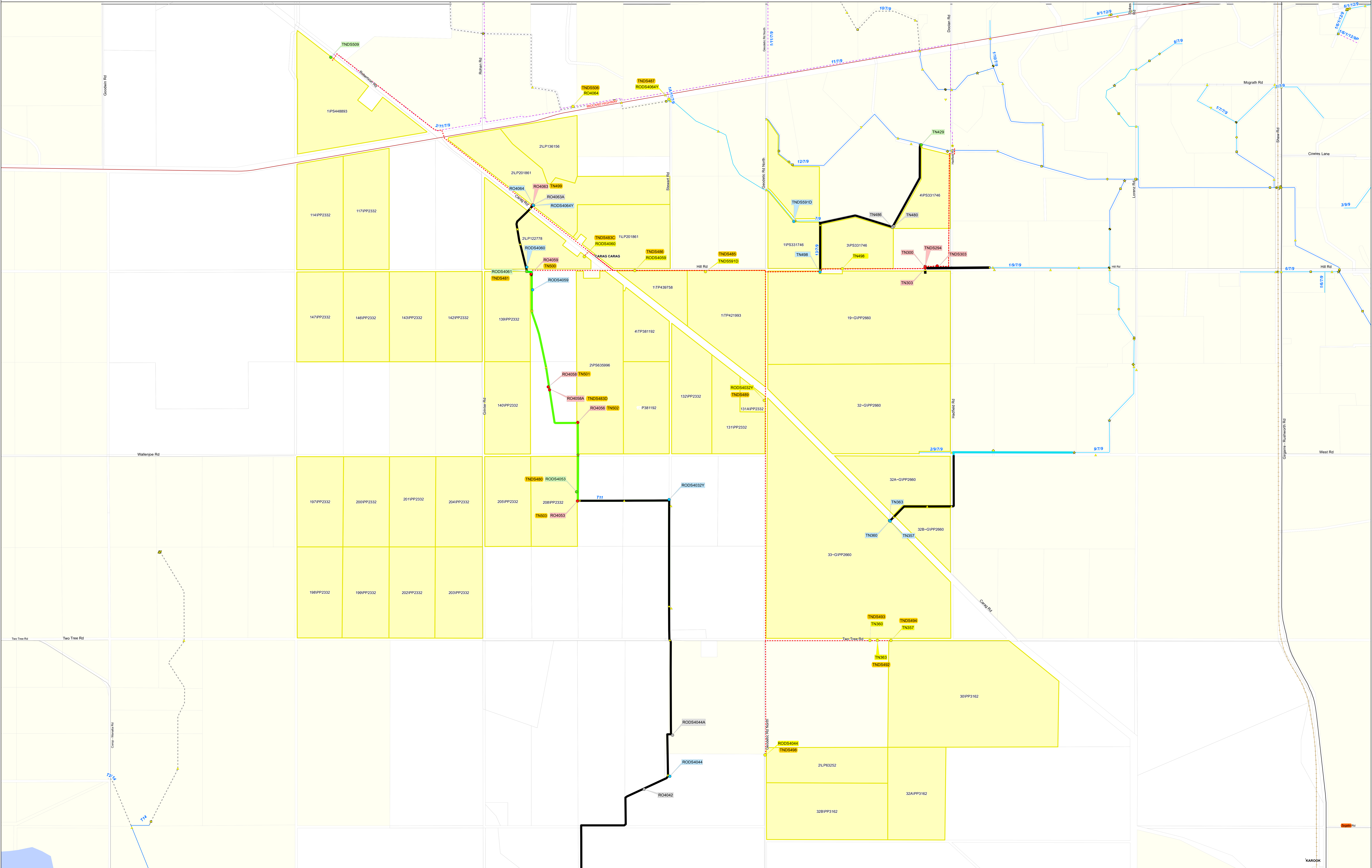


# Reconfiguration Plan: CG37 RP 1



**Goulburn Murray Water**  
**IR185583**  
 18 SEP 2019  
 GOULBURN-MURRAY WATER  
 40 CASEY STREET (PO BOX 165)  
 TATURA VIC 3616  
 Ph (03) 5833 5500 Fax (03) 58245827  
 gmsupport@gmwater.com.au

Service Point Modernisation Action	Channel Modernisation Action	G-MW Irrigation Structures	Electrical Crossing	Offtake	Subway	Channel Network	Transport
● Retain	— Retain channel with no modernisation	● Abandoned Structure	⚡ Farm Irrigation Crossing	● Outfall	▭ Syphon	— Backbone	— Freeway
● Relocate	— Retain channel with remediation	● Bridge	● Flume	● Pump Station	▭ Valve - Isolation	— Non-Backbone	— Highway
● Replace	— Retain channel with modernisation	● Culvert	● Footbridge	● Regulator	▭ Weir	--- Decommissioned	— Major Road
● Rationalise	— Pipeline	● Drainage Inlet	● Monitoring Station	● Regulator Combine	— Pipeline	— Proposed Pipeline	— Semi-Major Road
● Relocation Point	— Decommission channel						— Minor Road

Waterway	Reservoir	Lake	DCRP Customer Parcels	Other Customer Properties	Property/Land Not Served	New service point name
— Waterway	■ Reservoir	■ Lake	■ DCRP Customer Parcels	■ Other Customer Properties	■ Property/Land Not Served	■ AADS0000 New service point name

**SCALE AT A0 1:10,240**

0 0.25 0.5 1 km

The content of this product is provided for information purposes only. No claim is made as to the accuracy of authenticity of the content of the product. In no event will GMW, its agents, instrumentalities and employees be liable for the accuracy of the information contained within this product nor its use of reliance placed on it. The information used within this product is provided on the basis that all persons accessing the information undertake responsibility for assessing the relevance and accuracy of its content.