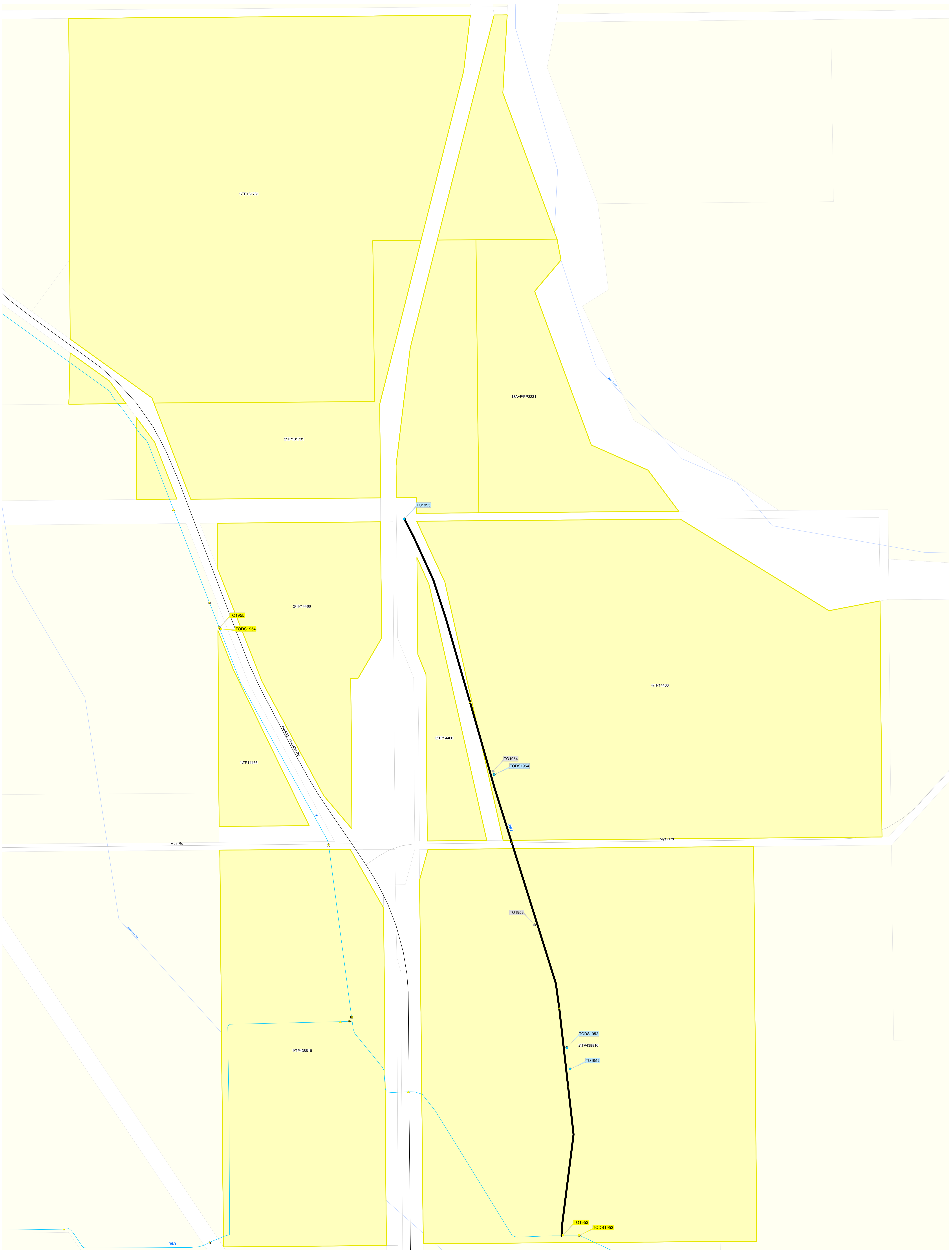
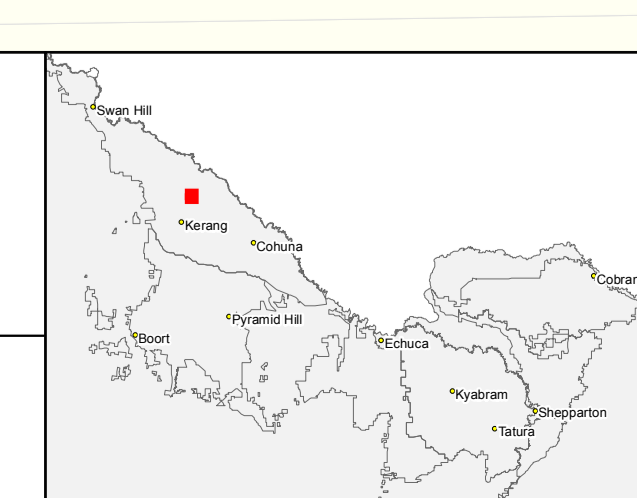


Reconfiguration Plan: T023 RP10



IR185583
03 APR 2019
GOULBURN-MURRAY WATER
40 CASEY STREET (PO BOX 165)
TATURA VIC 3616
Ph (03) 5823 5500 Fax (03) 58245827
gmsupport@gmwater.com.au



Service Point Modernisation Action	Channel Modernisation Action	G-MW Irrigation Structures	Electrical Crossing	Oftake	Subway	Channel Network	Transport
● Retain	■ Retain channel with no modernisation	● Abandoned Structure	⚡ Farm Irrigation Crossing	● Outfall	▭ Subway	— Backbone	— Freeway
● Relocate	■ Retain channel with remediation	● Bridge	● Flume	● Pump Station	▭ Siphon	— Non-Backbone	— Highway
● Replace	■ Retain channel with modernisation	● Culvert	● Footbridge	● Regulator	▭ Valve - Isolation	--- Decommissioned	— Major Road
● Rationalise	— Pipeline	● Drainage Inlet	● Monitoring Station	● Regulator Combine	▭ Weir	--- Pipeline	— Semi-Major Road
● Relocation Point	— Decommission channel					--- Proposed Pipeline	— Minor Road

SCALE AT A0 1:2,925

0 0.05 0.1 0.2 km

The content of this product is provided for information purposes only. No claim is made as to the accuracy or authenticity of the content of the product. In no event will G-MW, its agents, instrumentalities and employees be liable for the accuracy of the information contained within this product nor its use of reliance placed on it. The information used within this product is provided on the basis that all persons accessing the information undertake responsibility for assessing the relevance and accuracy of its content.