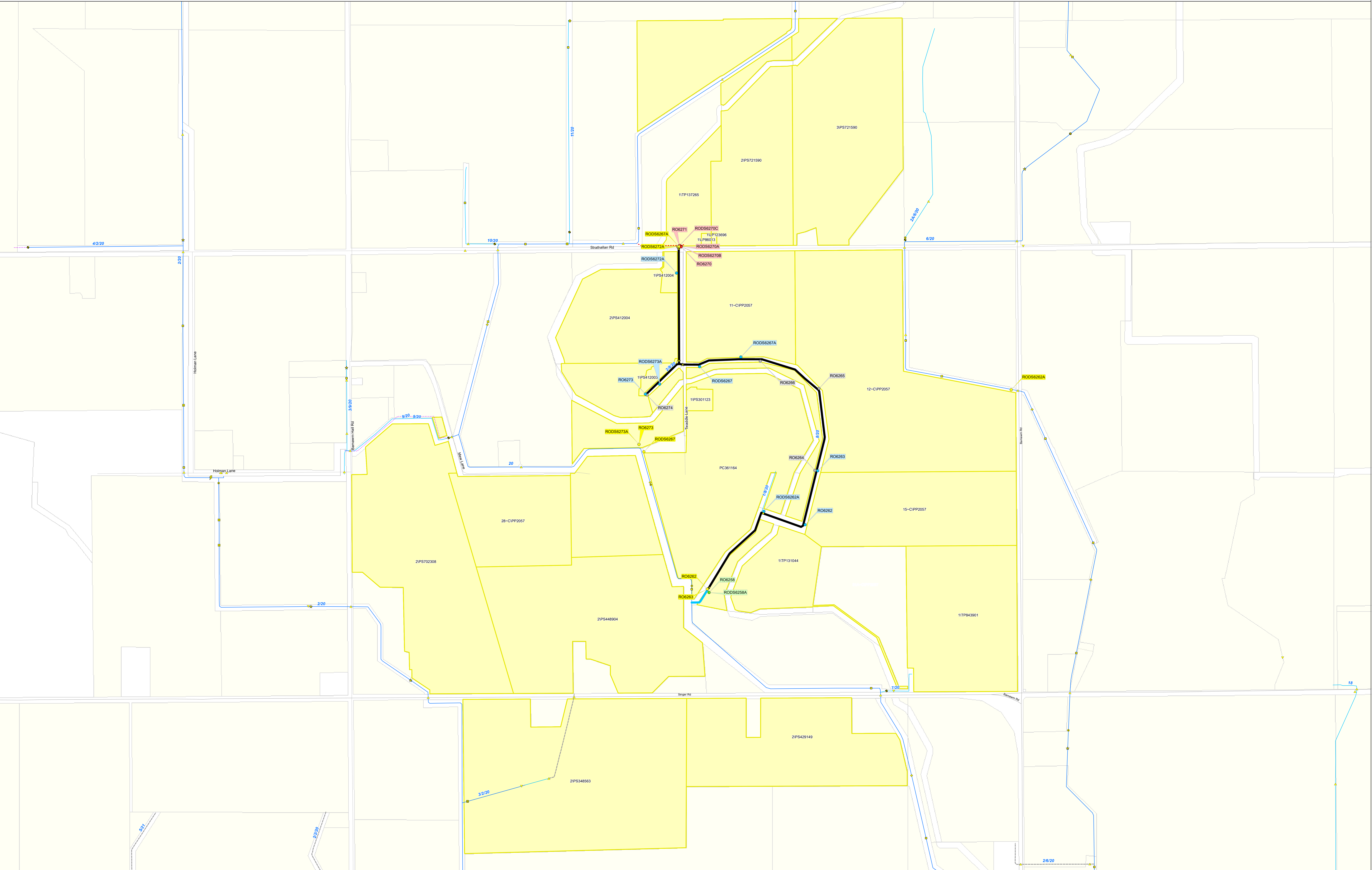


# Reconfiguration Plan: RO24 RP 1



**Goulburn-Murray WATER**  
**IR185583**  
 16 JUL 2019  
 GOULBURN-MURRAY WATER  
 40 CASEY STREET (PO BOX 165)  
 TATURA VIC 3616  
 Ph (03) 5833 5500 Fax (03) 58245827  
 gmsupport@gmwater.com.au

<b>Service Point Modernisation Action</b> <ul style="list-style-type: none"> <li>Retain</li> <li>Relocate</li> <li>Replace</li> <li>Rationalise</li> <li>Relocation Point</li> </ul>	<b>Channel Modernisation Action</b> <ul style="list-style-type: none"> <li>Retain channel with no modernisation</li> <li>Retain channel with remediation</li> <li>Retain channel with modernisation</li> <li>Pipeline</li> <li>Decommission channel</li> </ul>	<b>GMW Irrigation Structures</b> <ul style="list-style-type: none"> <li>Abandoned Structure</li> <li>Bridge</li> <li>Culvert</li> <li>Drainage Inlet</li> </ul>	<ul style="list-style-type: none"> <li>Electrical Crossing</li> <li>Farm Irrigation Crossing</li> <li>Flume</li> <li>Footbridge</li> <li>Monitoring Station</li> </ul>	<ul style="list-style-type: none"> <li>Offtake</li> <li>Outfall</li> <li>Pump Station</li> <li>Regulator</li> <li>Regulator Combine</li> </ul>	<ul style="list-style-type: none"> <li>Subway</li> <li>Syphon</li> <li>Valve - Isolation</li> <li>Weir</li> </ul>	<b>Channel Network</b> <ul style="list-style-type: none"> <li>Backbone Channel</li> <li>Non-Backbone</li> <li>Decommissioned Channel</li> <li>Pipeline</li> <li>Proposed Pipeline</li> </ul>	<b>Transport</b> <ul style="list-style-type: none"> <li>Freeway</li> <li>Highway</li> <li>Major Road</li> <li>Semi-Major Road</li> <li>Minor Road</li> </ul>	<ul style="list-style-type: none"> <li>Waterway</li> <li>Reservoir</li> <li>Lake</li> </ul>	<ul style="list-style-type: none"> <li>DCRP Customer Parcels</li> <li>Other Customer Properties</li> <li>Property/Land Not Served</li> </ul>
---	---	--	--	--	---	---	---	---	--

SCALE AT A0 1:4,300

The content of this product is provided for information purposes only. No claim is made as to the accuracy or authenticity of the content of the product. In no event will G.M.W. or its agents, instrumentalities and employees be liable for the accuracy of the information contained within this product nor its use of reliance placed on it. The information used within this product is provided on the basis that all persons accessing the information undertake responsibility for assessing the relevance and accuracy of its content.