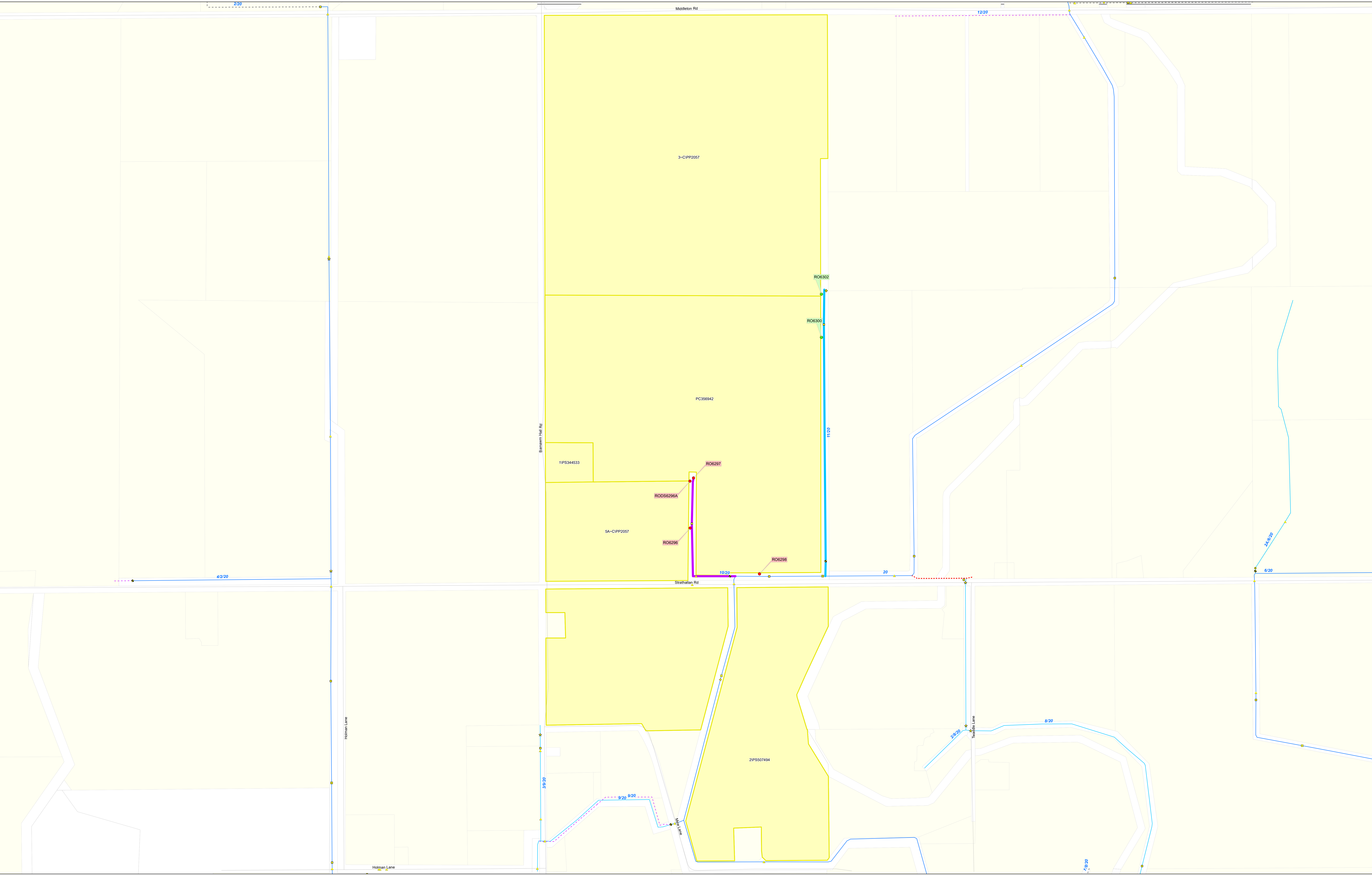


# Reconfiguration Plan: RO29 RP01



Service Point Modernisation Action	Channel Modernisation Action	G-MW Irrigation Structures	Electrical Crossing	Offtake	Subway	Channel Network	Transport	Waterway	DCRP Customer Parcels
● Retain	— Retain channel with no modernisation	● Abandoned Structure	⚡ Electrical Crossing	◆ Offtake	▭ Subway	— Backbone	— Freeway	■ Reservoir	■ DCRP Customer Parcels
● Relocate	— Retain channel with remediation	◆ Bridge	● Farm Irrigation Crossing	◆ Outfall	▭ Bridge	— Non-Backbone	— Highway	■ Lake	■ Other Customer Properties
● Replace	— Retain channel with modernisation	▲ Culvert	● Flume	● Pump Station	▭ Culvert	--- Decommissioned	— Major Road		■ Property/Land Not Serviced
● Rationalise	— Pipeline	■ Drainage Inlet	■ Footbridge	■ Regulator	▭ Weir	--- Pipeline	— Semi-Major Road		
● Relocation Point	— Decommission channel		■ Monitoring Station	★ Regulator Combine		--- Proposed Pipeline	— Minor Road		

**SCALE AT A0 1:3,370**

The content of this product is provided for information purposes only. No claim is made as to the accuracy or authenticity of the content of the product. In no event will GMW, its agents, instrumentalities and employees be liable for the accuracy of the information contained within this product nor its use of reliance placed on it. The information used within this product is provided on the basis that all persons accessing the information undertake responsibility for assessing the relevance and accuracy of its content.