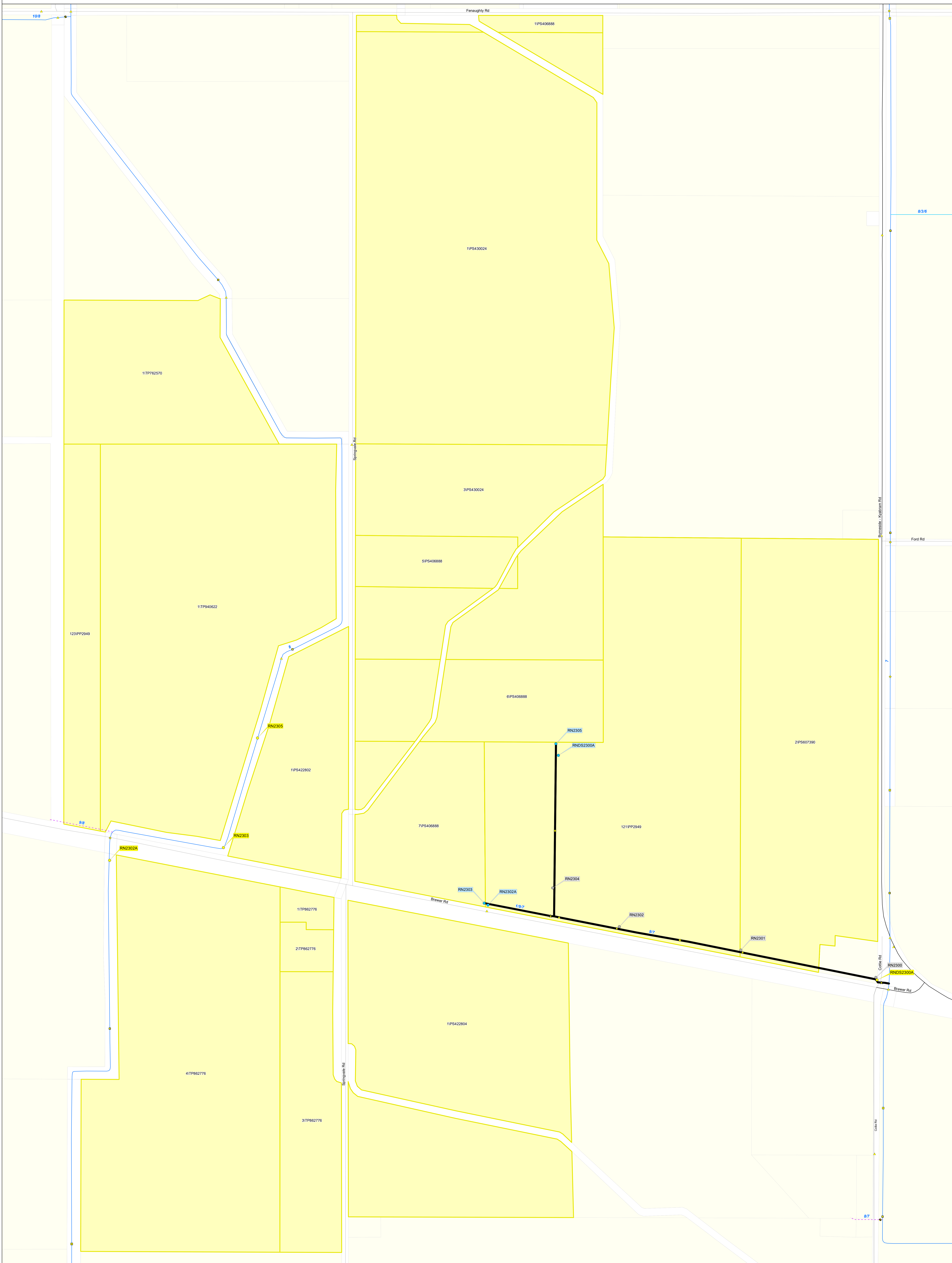
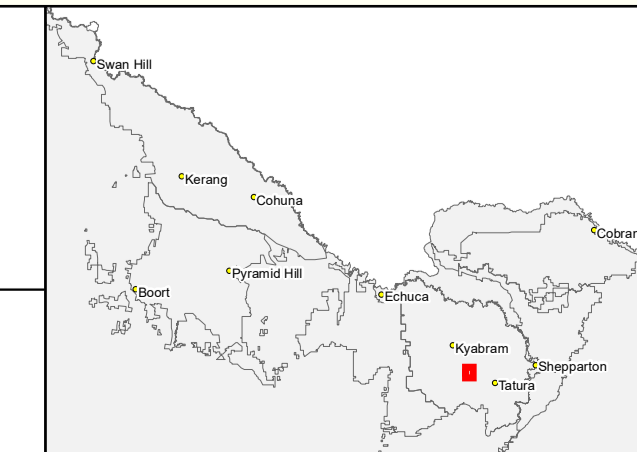


Reconfiguration Plan: CG09 RP02



GOULBURN-MURRAY WATER
IR185583
 20 MAY 2019
 40 CASEY STREET (PO BOX 165)
 TATURA VIC 3616
 Ph (03) 5823 5500 Fax (03) 58245827
 gmsupport@gmwater.com.au



Service Point Modernisation Action	Channel Modernisation Action
● Retain	— Retain channel with no modernisation
● Relocate	— Retain channel with remediation
● Replace	— Retain channel with modernisation
○ Rationalise	— Pipeline
● Relocation Point	— Decommission channel

G-MW Irrigation Structures	Electrical Crossing
◆ Abandoned Structure	◆ Farm Irrigation Crossing
◆ Bridge	◆ Flume
▲ Culvert	◆ Footbridge
● Drainage Inlet	◆ Monitoring Station
	◆ Regulator Combine

Channel Network	Transport
— Backbone	— Freeway
— Non-Backbone	— Highway
--- Decommissioned	— Major Road
--- Pipeline	— Semi-Major Road
--- Proposed Pipeline	— Minor Road

Waterway	Other Customer Properties
— Waterway	— Property/Land Not Serviced
■ Lake	

SCALE AT A0 1:3,570

0 0.075 0.15 0.3 km

The content of this product is provided for information purposes only. No claim is made as to the accuracy of authenticity of the content of the product. In no event will G-MW, its agents, instrumentalities and employees be liable for the accuracy of the information contained within this product nor its use of reliance placed on it. The information used within this product is provided on the basis that all persons accessing the information undertake responsibility for assessing the relevance and accuracy of its content.