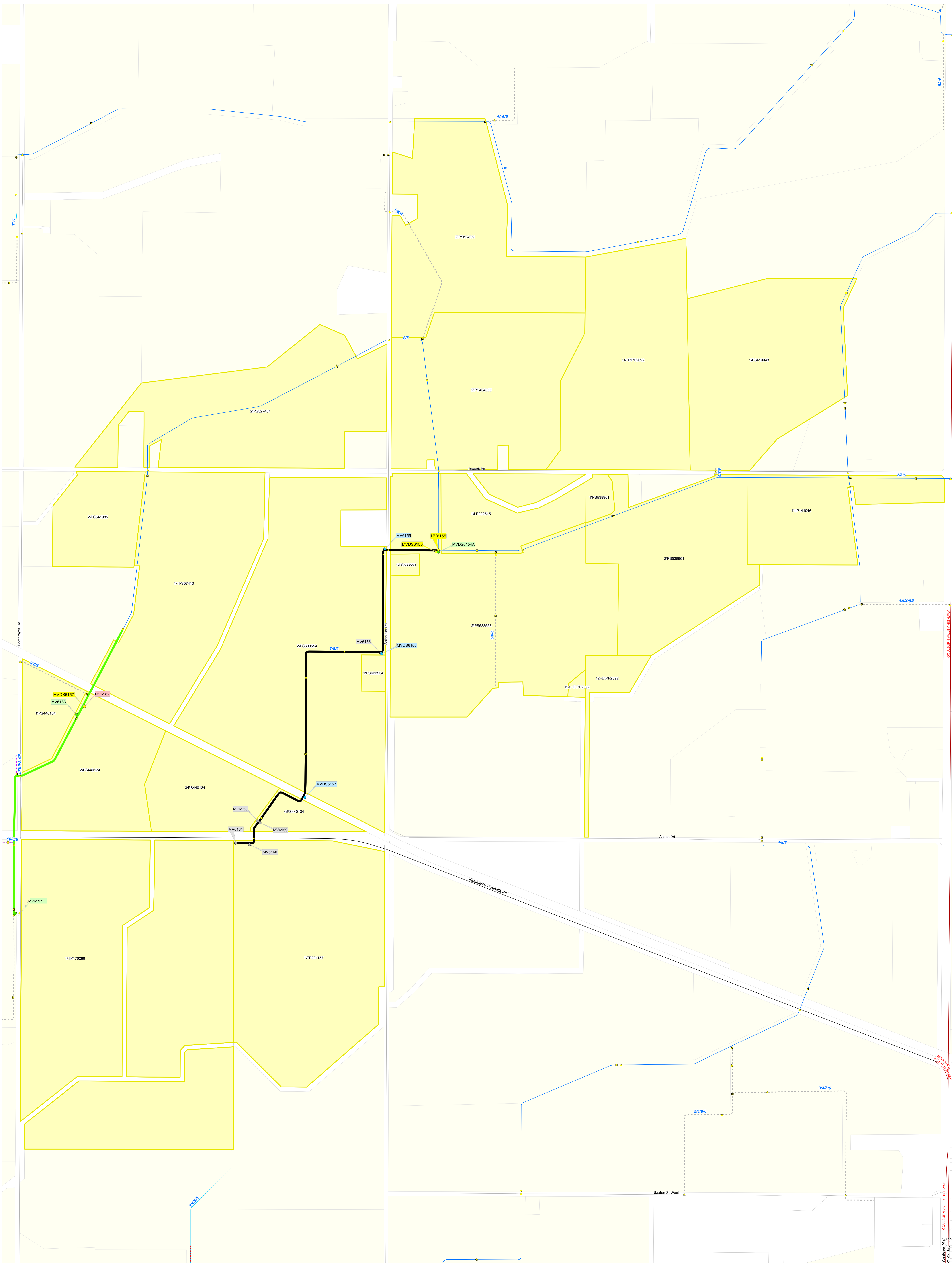
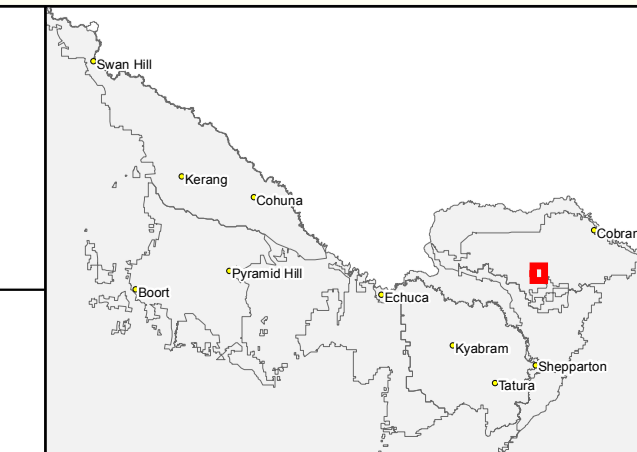


Reconfiguration Plan: MV46 RP 4



IR185583
 22 JAN 2019
 COULBURN-MURRAY WATER
 40 CASEY STREET (PO BOX 165)
 TATURA VIC 3616
 Ph (03) 5833 5500 Fax (03) 58245827
 gswsupport@gmwwater.com.au



Service Point Modernisation Action	Channel Modernisation Action	G-MW Irrigation Structures	Electrical Crossing	O-Offtake	Subway	Channel Network	Transport
● Retain	— Retain channel with no modernisation	● Abandoned Structure	⚡ Electrical Crossing	● O-Offtake	■ Subway	— Backbone	— Freeway
● Relocate	— Retain channel with remediation	● Bridge	● Farm Irrigation Crossing	● Outfall	▼ Syphon	— Non-Backbone	— Highway
● Replace	— Retain channel with modernisation	▲ Culvert	● Flume	● Pump Station	⚡ Valve - Isolation	— Decommissioned	— Major Road
● Rationalise	— Pipeline	● Drainage Inlet	● Footbridge	● Regulator	⚡ Weir	— Proposed Pipeline	— Semi-Major Road
● Relocation Point	— Decommission channel		● Monitoring Station	★ Regulator Combine			— Minor Road

SCALE AT A0 1:5,145

0 0.125 0.25 0.5 km

The content of this product is provided for information purposes only. No claim is made as to the accuracy of authenticity of the content of the product. In no event will G-MW, its agents, instrumentalities and employees be liable for the accuracy of the information contained within this product nor its use of reliance placed on it. The information used within this product is provided on the basis that all persons accessing the information undertake responsibility for assessing the relevance and accuracy of its content.