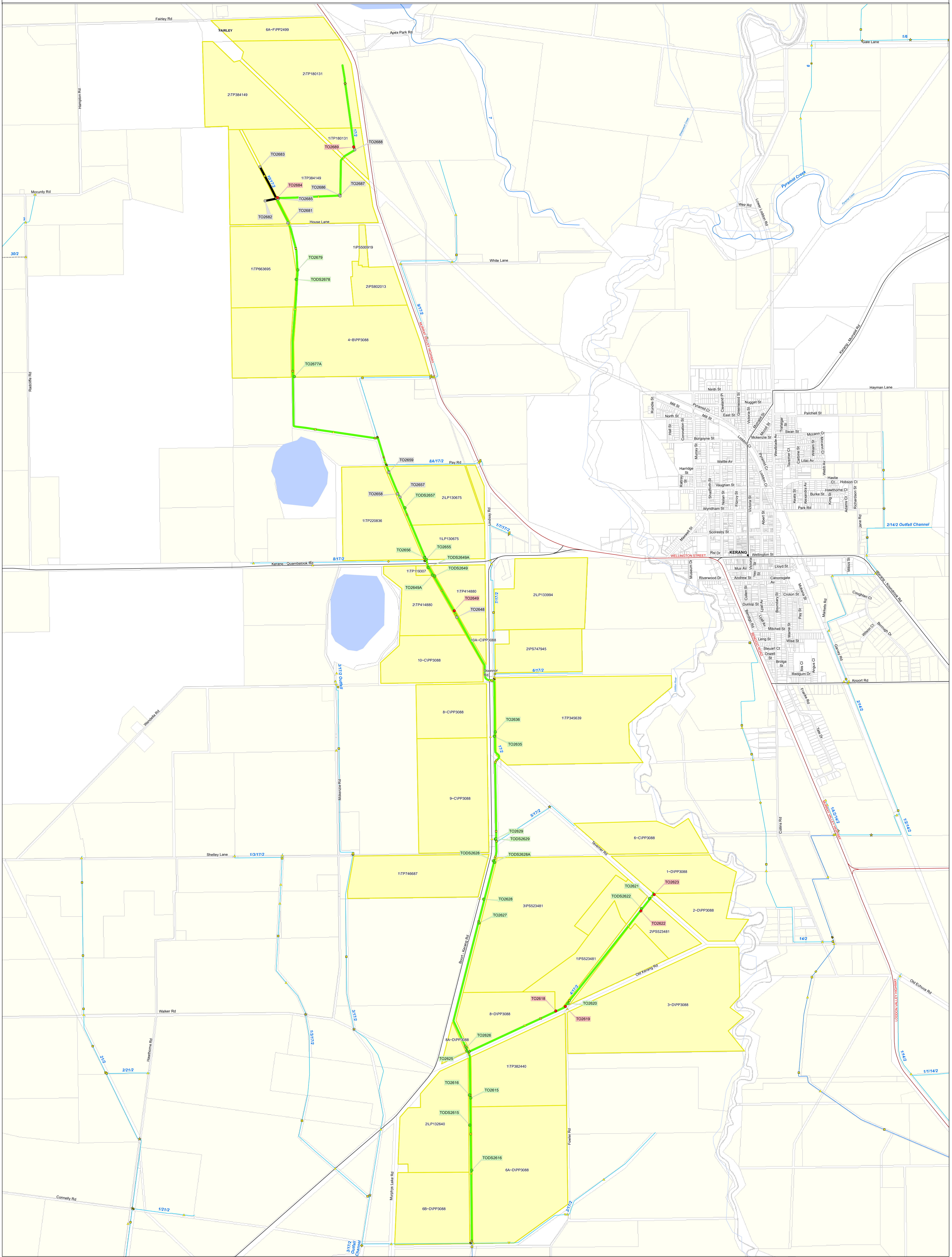
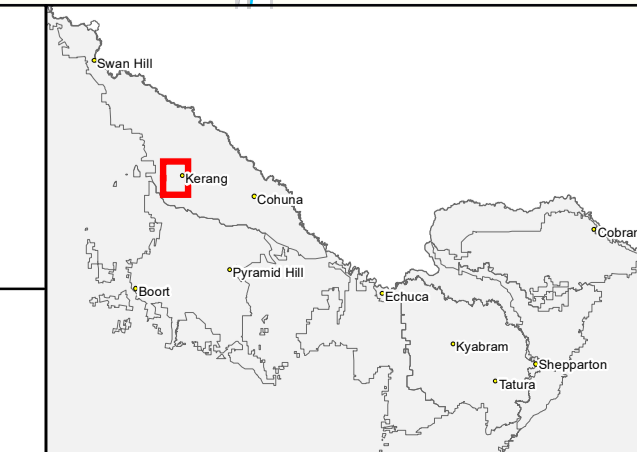


Desktop Concept Reconfiguration Plan: TO15 DCRP 1



IR185583
13 NOV 2018
COULBURN-MURRAY WATER
40 CASEY STREET (PO BOX 165)
TATURA VIC 3616
Ph (03) 5833 5500 Fax (03) 58245927
gsoosupport@gmwwater.com.au



Service Point Modernisation Action	Channel Modernisation Action	G-MW Irrigation Structures	Electrical Crossing	Offtake	Subway	Channel Network	Transport	Waterway
● Retain	— Retain channel with no modernisation	● Abandoned Structure	⚡ Electrical Crossing	◆ Offtake	■ Subway	— Backbone Channel	— Freeway	— Waterway
● Relocate	— Retain channel with remediation	● Bridge	⚡ Farm Irrigation Crossing	◆ Outfall	▽ Syphon	— Other Channel	— Highway	■ Lake
● Replace	— Retain channel with modernisation	▲ Culvert	⚡ Flume	◆ Pump Station	⚡ Valve - Isolation	--- Decommissioned Channel	— Major Road	■ DCRP Customer Property
● Rationalise	— Pipeline	● Drainage Inlet	⚡ Footbridge	◆ Regulator	⚡ Weir	--- Proposed Pipeline	— Semi-Major Road	■ Other Customer Properties
● Relocation Point	— Decommission channel	● Monitoring Station	⚡ Monitoring Station	◆ Regulator Combine	— Minor Road	—	— Minor Road	■ Property/Land Not Serviced

SCALE AT A0 1:11,450

0 0.275 0.55 1.1 km

Draft

The content of this product is provided for information purposes only. No claim is made as to the accuracy of authenticity of the content of the product. In no event will G-MW, its agents, instrumentalities and employees be liable for the accuracy of the information contained within this product nor for its use of reliance placed on it. The information used within this product is provided on the basis that all persons accessing the information undertake responsibility for assessing the relevance and accuracy of its content.

All Proposed Works to be Completed By: / /