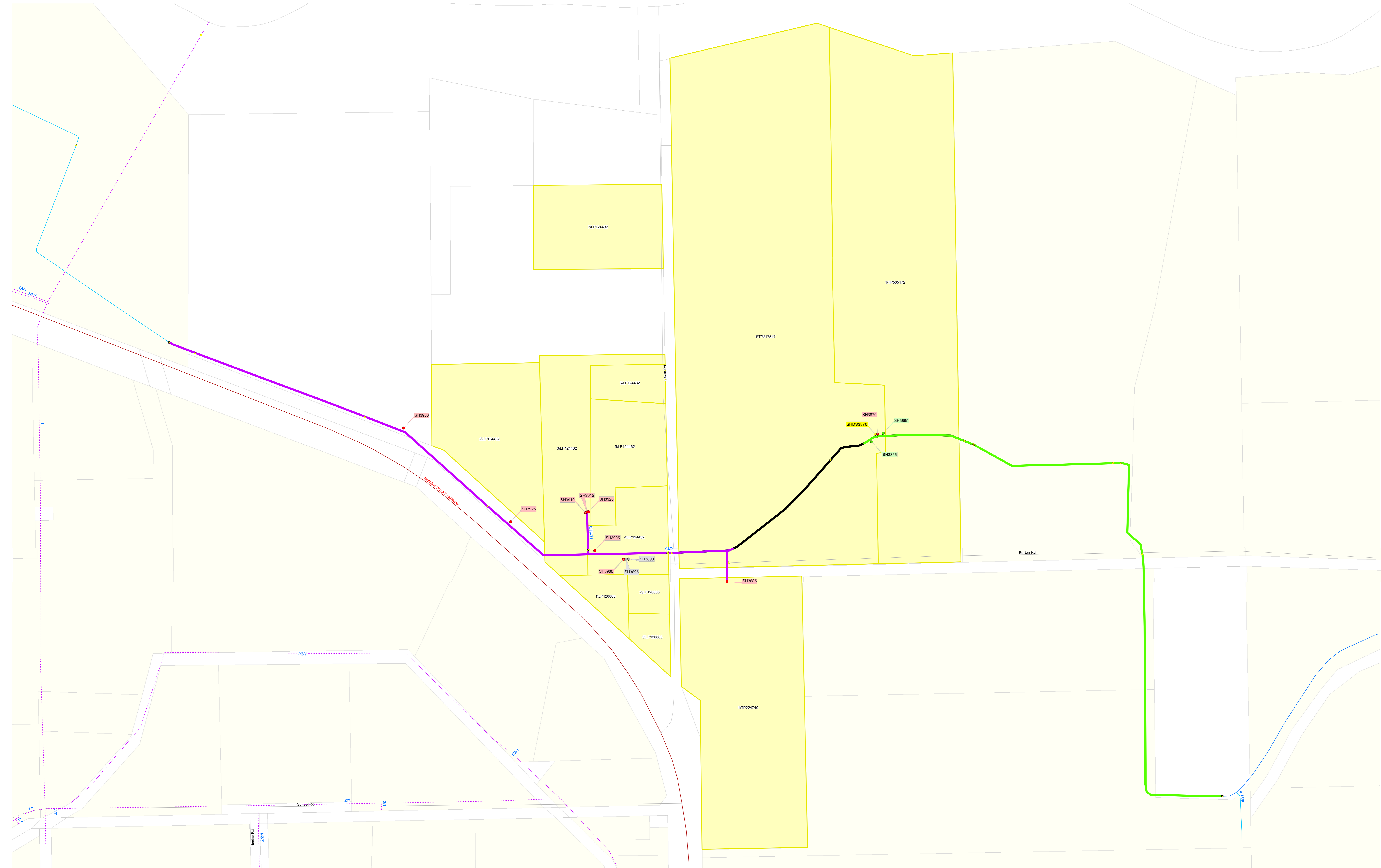

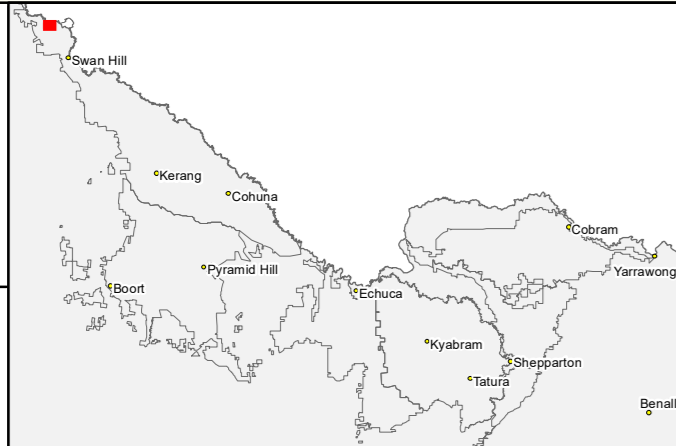


# Reconfiguration Plan: TO32 RP 1



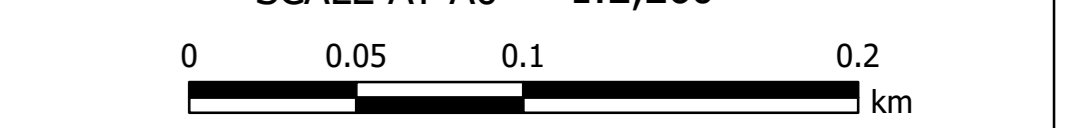

  
**IR185583**
  
 30 Jul 2018

GOULBURN-MURRAY WATER
   
 40 CASEY STREET (PO BOX 165)
   
 TATURA VIC 3616
   
 Ph (03) 5833 5500 Fax (03) 58245827
   
 gmsupport@gmwater.com.au



| Service Point Modernisation Action | Channel Modernisation Action           | GMW Irrigation Structures | Electrical Crossing        | Oftake              | Subway              | Channel Network          | Transport         | Waterway    | DCRP Customer Parcels        |
|------------------------------------|--|---------------------------|----------------------------|---------------------|---------------------|--------------------------|-------------------|-------------|------------------------------|
| ● Retain                           | — Retain channel with no modernisation | ◆ Abandoned Structure     | ⚡ Electrical Crossing      | ◆ Outfall           | — Subway            | — Backbone Channel       | — Freeway         | — Waterway  | ■ DCRP Customer Parcels      |
| ● Relocate                         | — Retain channel with remediation      | ◆ Bridge                  | ◆ Farm Irrigation Crossing | ◆ Pump Station      | — Syphon            | — Non-Backbone           | — Highway         | ■ Reservoir | ■ Other Customer Properties  |
| ● Replace                          | — Retain channel with modernisation    | ▲ Culvert                 | ◆ Flume                    | ◆ Regulator         | — Valve - Isolation | — Decommissioned Channel | — Major Road      | ■ Lake      | □ Property/Land Not Serviced |
| ● Rationalise                      | — Pipeline                             | ● Drainage Inlet          | ◆ Footbridge               | ◆ Regulator Combine | — Weir              | — Pipeline               | — Semi-Major Road |             |                              |
| ● Relocation Point                 | — Decommission channel                 |                           | ◆ Monitoring Station       |                     |                     | — Proposed Pipeline      | — Minor Road      |             |                              |

SCALE AT A0 1:2,260



0 0.05 0.1 0.2 km

The content of this product is provided for information purposes only. No claim is made as to the accuracy or authenticity of the content of the product. In no event will G.M.W. or its agents, instrumentalities and employees be liable for the accuracy of the information contained within this product nor its use or reliance placed on it. The information used within this product is provided on the basis that all persons accessing the information undertake responsibility for assessing the relevance and accuracy of its content.