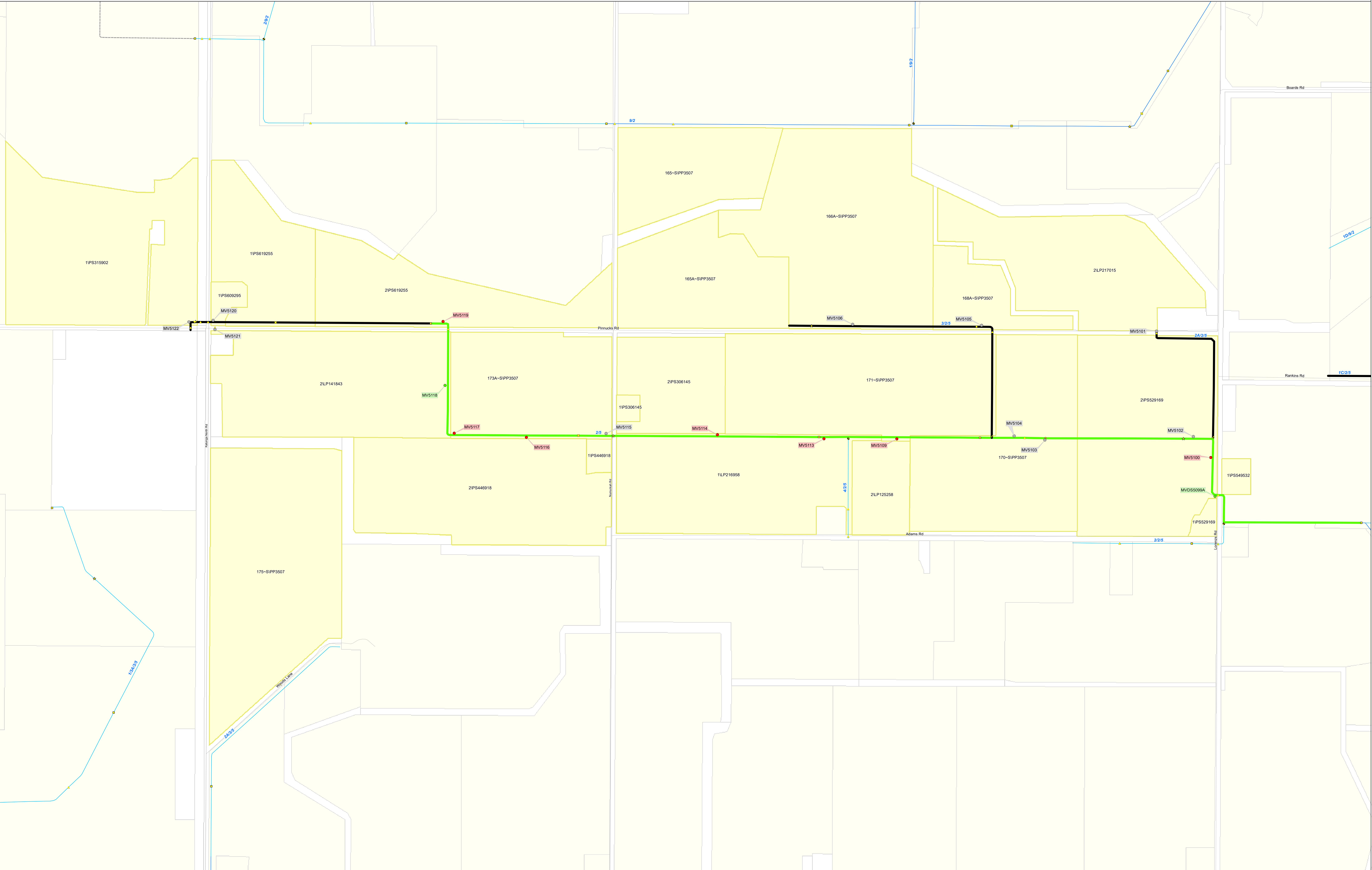
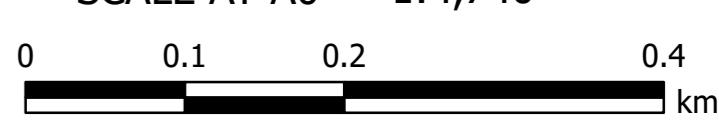


# Reconfiguration Plan : MV21 RP 1



| Service Point Modernisation Action | Channel Modernisation Action           | G-MW Irrigation Structures | Electrical Crossing        | Offtake             | Subway                | Channel Network            | Transport         | Waterway    | DCRP Customer Parcels        |
|------------------------------------|--|----------------------------|----------------------------|---------------------|-----------------------|----------------------------|-------------------|-------------|------------------------------|
| ● Retain                           | — Retain channel with no modernisation | ● Abandoned Structure      | ⚡ Electrical Crossing      | ◆ Offtake           | ▭ Subway              | — Backbone Channel         | — Freeway         | — Waterway  | ■ DCRP Customer Parcels      |
| ● Relocate                         | — Retain channel with remediation      | ● Bridge                   | ⚡ Farm Irrigation Crossing | ◆ Outfall           | ▭ Syphon              | — Non-Backbone Channel     | — Highway         | ■ Reservoir | ■ Other Customer Properties  |
| ● Replace                          | — Retain channel with modernisation    | ● Culvert                  | ⚡ Flume                    | ◆ Pump Station      | ▭ Valve - Isolation   | --- Decommissioned Channel | — Major Road      | ■ Lake      | ■ Property/Land Not Serviced |
| ● Rationalise                      | — Pipeline                             | ● Drainage Inlet           | ⚡ Footbridge               | ◆ Regulator         | ▭ Weir                | --- Pipeline               | — Semi-Major Road |             |                              |
| ● Relocation Point                 | — Decommission channel                 | ● Monitoring Station       | ⚡ Monitoring Station       | ◆ Regulator Combine | --- Proposed Pipeline | --- Minor Road             |                   |             |                              |

SCALE AT A0 1:4,740
   

  
 The content of this product is provided for information purposes only. No claim is made as to the accuracy or authenticity of the content of the product. In no event will G.M.W. its agents, instrumentalities and employees be liable for the accuracy of the information contained within this product nor its use or reliance placed on it. The information used within this product is provided on the basis that all persons accessing the information undertake responsibility for assessing the relevance and accuracy of its content.