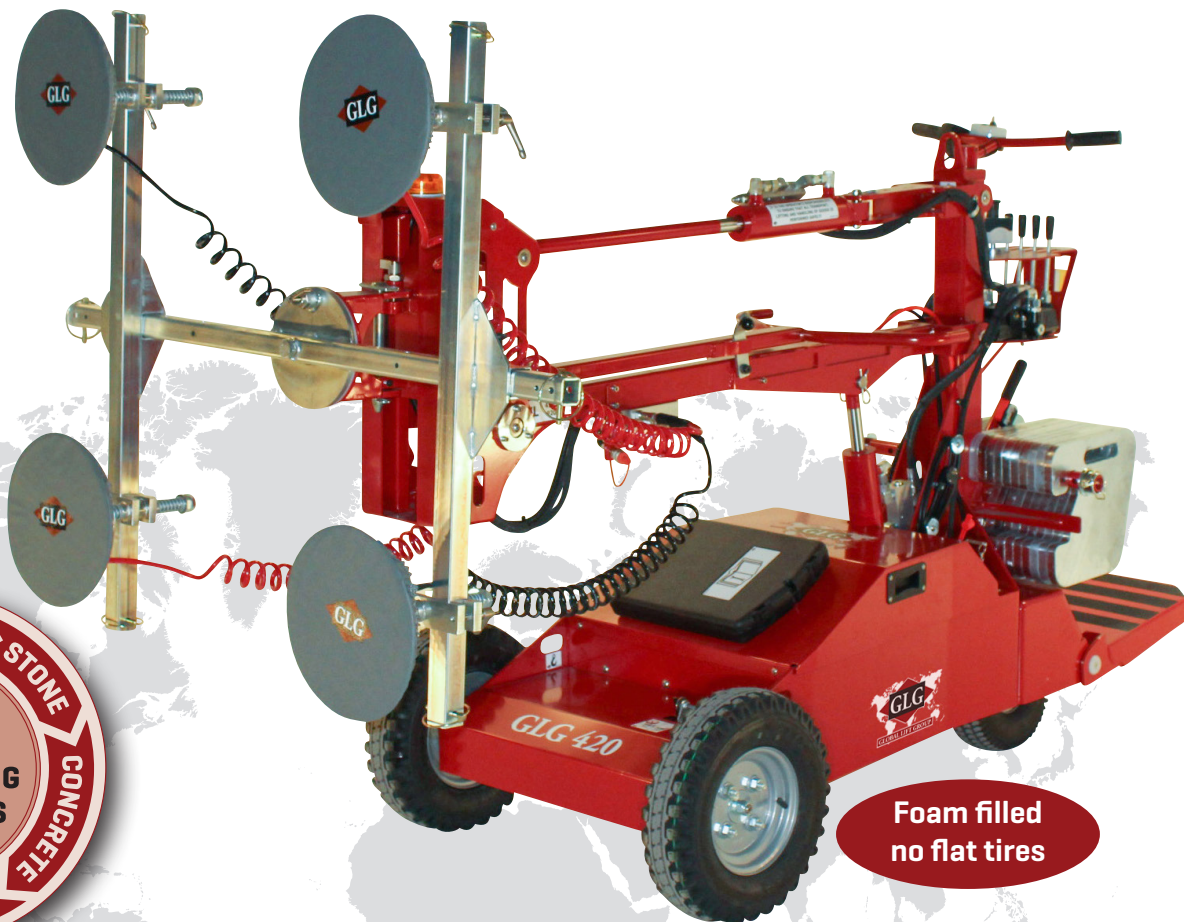


CHASSIS

# B GLG 420 SP

Very powerful self-propelled all adaptable glass handler lifting up to 420 kg/925 lbs.



SUCTION DISCS FOR ALL BUILDING MATERIALS

Foam filled no flat tires

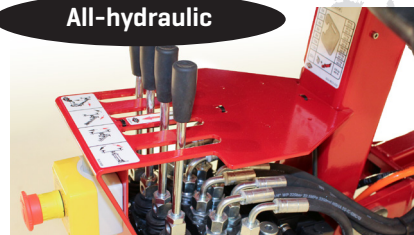
- Intelligent all adaptable glass handler for millimeter precise maneuverability of flat materials
- No Outriggers - less floor space required
- Drives through narrow passages down to 83,3 cm/33"

### 400% overcapacity



The most secure vacuum system with two separate 200% systems.

### All-hydraulic



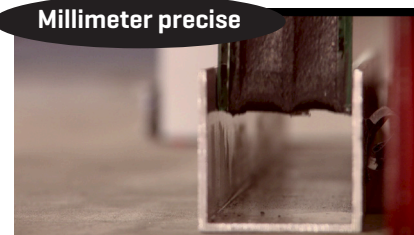
All moving parts are controlled by the powerful and extremely precise hydraulic system.

### Powerful battery pack



Two 159AH 12V batteries in series provide a powerful battery pack and ensure optimal autonomy. Recharges over night.

### Millimeter precise



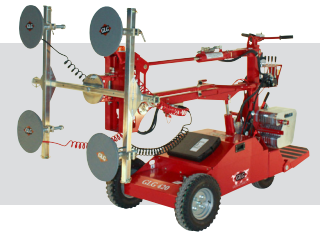
The GLG all adaptable handlers are the most precise lifters in the world when combined with the extremely heavy loads.

SERVICE  
24 HOUR  
DELIVERY OF SPARE PARTS



We lift it up where it belongs!

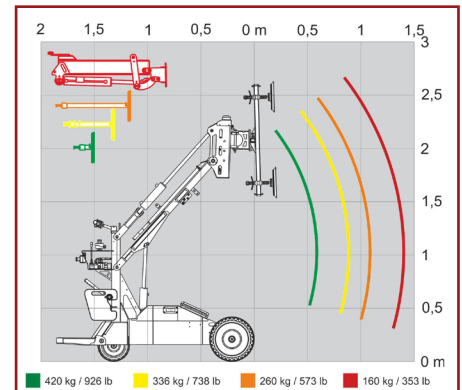
[www.glgsales.com](http://www.glgsales.com)



## Technical specifications

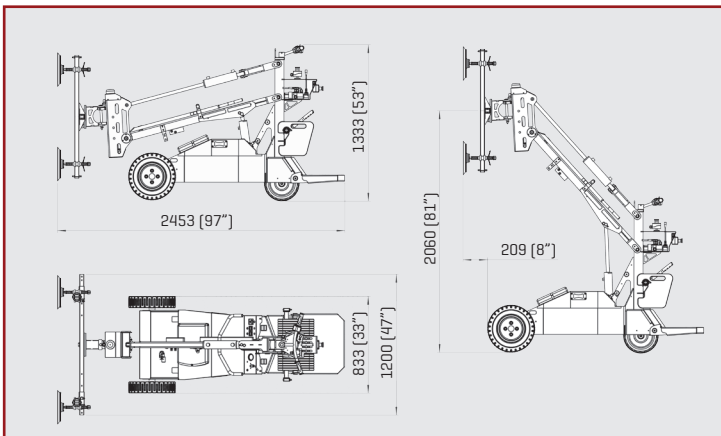
Description	EU	US	Description	EU	US
Loading capacity w. 22 counterw.	420 kg	925 lb	Width twin wheels	1.083 mm	43"
Own weight w. counterw.	697 kg	1537 lb	Width boom	1.200 mm	47"
Own weight without counterw.	466 kg	1027 lb	Length	2.000 mm	79"
Axle load rear	243,00 kg	536 lb	Height	1.333 mm	52"
Axle load front	220,00 kg	485 lb	Lifting height	2.060 mm	81"
Pressure rear wheels	4,31 kg/cm <sup>2</sup>	61 lb/in <sup>2</sup>	Sideshift	70 mm	3"
Pressure front wheels	3,49 kg/cm <sup>2</sup>	50 lb/in <sup>2</sup>	Vertical shift	150 mm	6"
Pressure front wheels twin mount	1,75 kg/cm <sup>2</sup>	25 lb/in <sup>2</sup>	Suction discs	Ø320 mm - 4 pcs.	
Max lifting height	2.063 mm	81"	Charging current	115 V/230 V	
Width	833 mm	33"	Battery [std.]	2 x 12 V / 159AH	
			Charging time 30% to 100%	App. 9 hours	

## Lifting diagramme

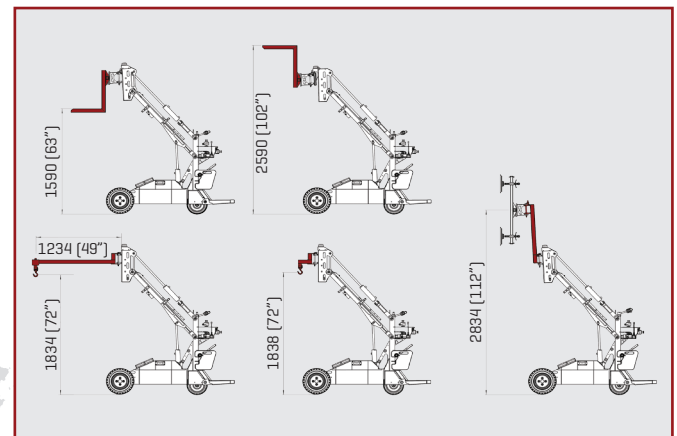


Lifting data with the different extension arms and with the front lift arm.

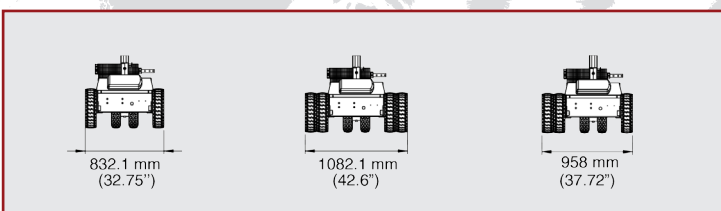
## Measurements



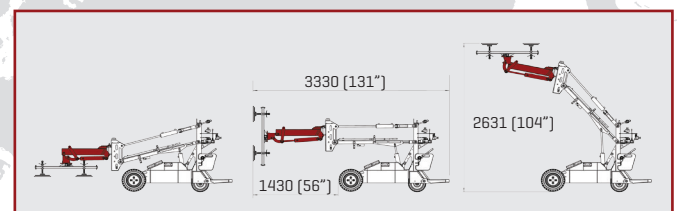
## Accessories



## Front wheel set-up's



## Horizontal lifting arm



Specifications Our machines comply with the requirements of Machinery Directive 2006/42/EC, and are ASME B30.5, 5-1.1, 5-1.10 Compliant, ASME B30.20 Compliant, SAE-J1063 Compliant, and SAE-J765 Compliant.

Other standards met include:  
 DS/EN ISO 12100:2011 Safety of machinery - General principles for design  
 DS/EN ISO 4413:2010 Hydraulic fluid power  
 DS/EN 13155 + A2:2009 Cranes - Safety - Non-fixed load lifting attachment.

Much more information at [www.glgsales.com](http://www.glgsales.com)

**GLG Canada Ltd [North America]**  
 21332 Wilson Street, NOL 1E0  
 Delaware, Ontario, Canada  
 Phone: 1-855-779-3371

**European Head Office**  
 Soendergaarden 28  
 9640 Farsoe, Denmark  
 Phone: +45 75 72 72 15

[www.glgsales.com](http://www.glgsales.com)



**GLOBAL LIFT GROUP**