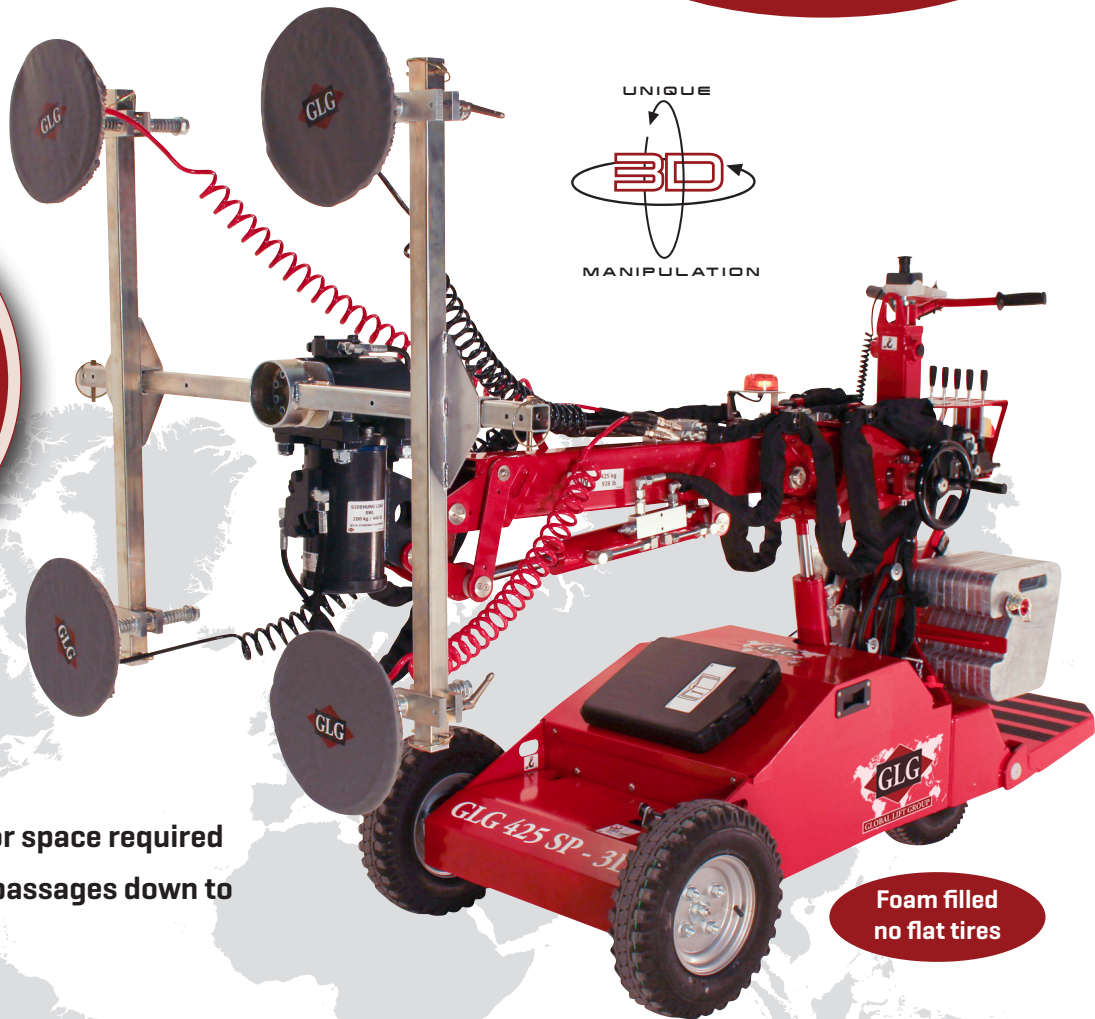


CHASSIS

B GLG 425 SP-3D

Self-propelled
Multi Lifter with
telescopic arm and 3D head
lifting 425 kg / 936 lbs.



- No outriggers - less floor space required
- Drives through narrow passages down to 83,3 cm/33"

Foam filled
no flat tires



400% overcapacity

The most secure vacuum system with two separate 200% systems.



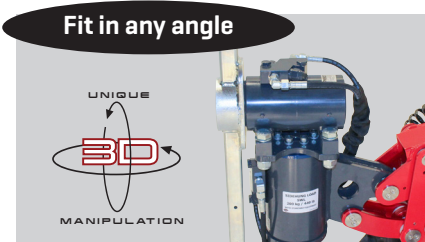
All-hydraulic

All moving parts are controlled by the powerful and extremely precise hydraulic system.



9 hours autonomy

The two powerful 159Ah batteries of 12V each provide you with the strongest and most efficient power supply on the market.



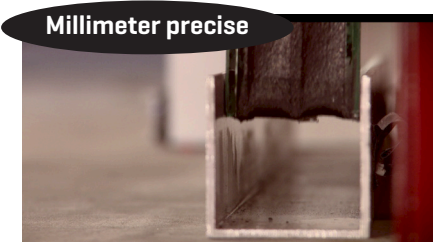
Fit in any angle

The unique 3D head allows you to manipulate the load in any angle you wish - up to 3 meters.



Cups for all materials

A wide variety of suction discs means, that the GLG 425 lifts almost all building materials.



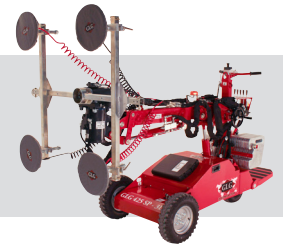
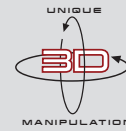
Millimeter precise

The GLG all adaptable handlers are the most precise lifters in the world when combined with the extremely heavy loads.



We lift it up where it belongs!

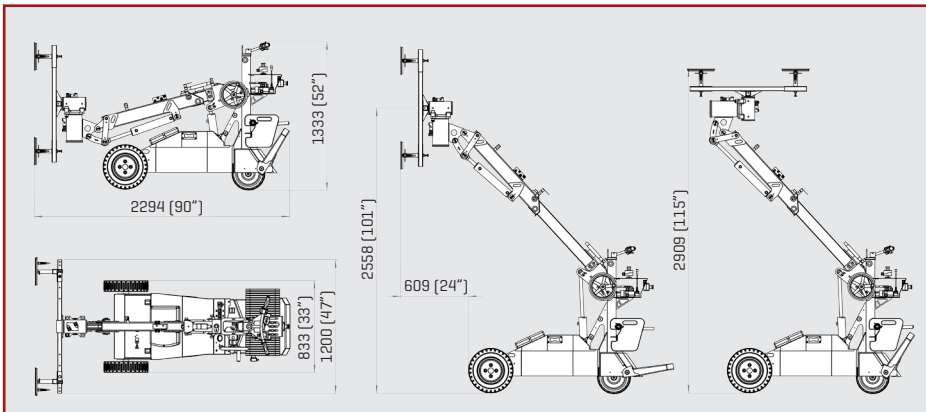
www.glgsales.com



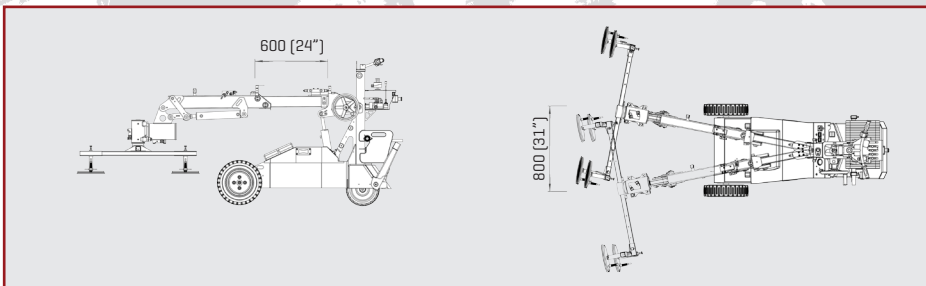
Technical specifications

Description	EU	US	Description	EU	US
Loading capacity w. 22 counterw.	425 kg	937 lb	Length	2.294 mm	90"
Own weight w. counterw.	754 kg	1662 lb	Height	1.333 mm	52"
Own weight without counterw.	525 kg	1157 lb	Lifting height	2.558 mm	101"
Axle load rear	289,50 kg	638 lb	Lifting height horizont.	2.909 mm	115"
Axle load front	235,50 kg	519 lb	Telescopic range	600 mm	24"
Pressure rear wheels	4,60 kg / cm ²	65 lb/in ²	Sideshift	2 x 11 degr. = 22 degr.	
Pressure front wheels	4,18 kg/cm ²	59 lb/in ²	Suction discs	Ø320 mm - 4 pcs.	
Pressure front wheels twin mount	1,87 kg/cm ²	27 lb/in ²	Charging current	115 V/230 V	
Width	833 mm	33"	Battery [std.]	2 x 12 V / 159AH	
Width twin wheels	1.083 mm	43"	Autonomy	Up to 9 hours	
Width boom	1.200 mm	47"	Charging time 30% to 100%	App. 9 hours	

Measurements



Pick-up function, telescopic range and 2 x 11° sideshift



Specifications Our machines comply with the requirements of Machinery Directive 2006/42/EC, and are ASME B30.5, 5-1.1, 5-1.10 Compliant, ASME B30.20 Compliant, SAE-J1063 Compliant, and SAE-J765 Compliant.

Other standards met include:
 DS/EN ISO 12100:2011 Safety of machinery - General principles for design.
 DS/EN ISO 4413:2010 Hydraulic fluid power.
 DS/EN 13155 + A2:2009 Cranes - Safety - Non-fixed load lifting attachment.

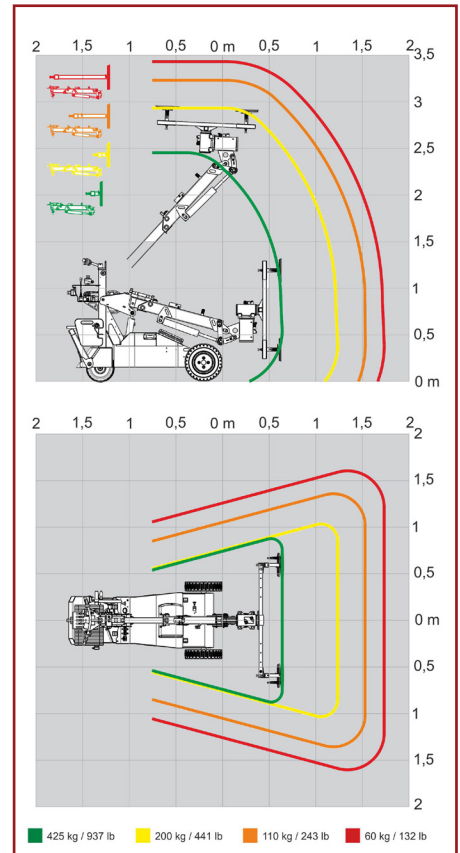
Much more information at www.glgsales.com

GLG Canada Ltd (North America)
 21332 Wilson Street, NOL 1E0
 Delaware, Ontario, Canada
 Phone: 1-855-779-3371

European Head Office
 Soendergaarden 28
 9640 Farsoe, Denmark
 Phone: +45 75 72 72 15

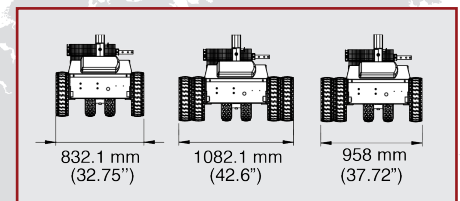
www.glgsales.com

Lifting diagramme



Lifting data with the different extension arms.

Front wheel set-up's



Accessories

Ask you local dealer



GLOBAL LIFT GROUP