

2021

Automotive Dealership Lighting Retrofit Program





Head Office - Ideal Supply Company Limited
1045 Wallace Ave N.,
Listowel, Ontario N4W 3H7
Phone: 519-291-1060 Fax: 519-291-3170

To our friends in the Automobile Sales & Service business.

Since 2016, Ideal Supply Inc. has partnered with local Automobile Dealerships with an LED Lighting Program. During this time we have been fortunate to be involved with 50+ car dealership lighting retrofits in our trading area. We hope you have been able to take advantage of the many benefits that LED lighting technology offers: substantial energy savings, reduced maintenance costs, and improved quality of light leading to customer & employee satisfaction.

We understand the challenges of making capital investments during these uncertain times, however we also understand that the true cost of operating a lighting system must also include energy costs and maintenance – just like a car. Our team of lighting specialists can review your current lighting system and propose any changes that make sense. Our report will include the bottom-line impact on energy and maintenance costs; often in the 50-70% range.

We have partnered with the best brands in the industry to put together a customized menu of products selected to focus on the Automotive Dealership sector. We encourage you to take a moment to consider your lighting, and contact us to help make your dealership the most efficient and best looking it can be. It is truly incredible what great lighting can do to improve the look and feel of a space!

Thanking you in advance

A handwritten signature in blue ink, appearing to read 'Tim Veal', written in a cursive style.

Tim Veal
Lighting Market Manager
M: 519-949-1635
E: tveal@idealsupply.com



SAVING ENERGY IS ALWAYS A BRIGHT IDEA.

Upgrade to new LED lighting with **saveONenergy** incentives to shorten payback periods, reduce maintenance costs, and cut operating costs.

Our process and procedure

Step 1 – Evaluation and Audit:

Our energy team will meet with your client group to understand your objectives and goals, your lighting requirements for user groups in each space and then audit existing lighting systems (wattages, voltage, lighting levels)

Step 2 – Education and Design:

Ideal Supply will provide a design process that allows for a level of explanation and education on various lighting systems. We believe in providing clients clarity in the design process to facilitate an understanding of LED fixture technology and control options. Our design team will provide computer generated interior and exterior lighting designs plans on reflected building and site drawings, so you can visual future results. This process will provide you an expectation for installed results. We can provide educational seminars to your management group and supply samples for review.

Step 3 – The Proposal:

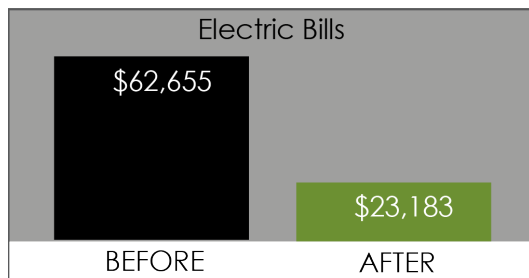
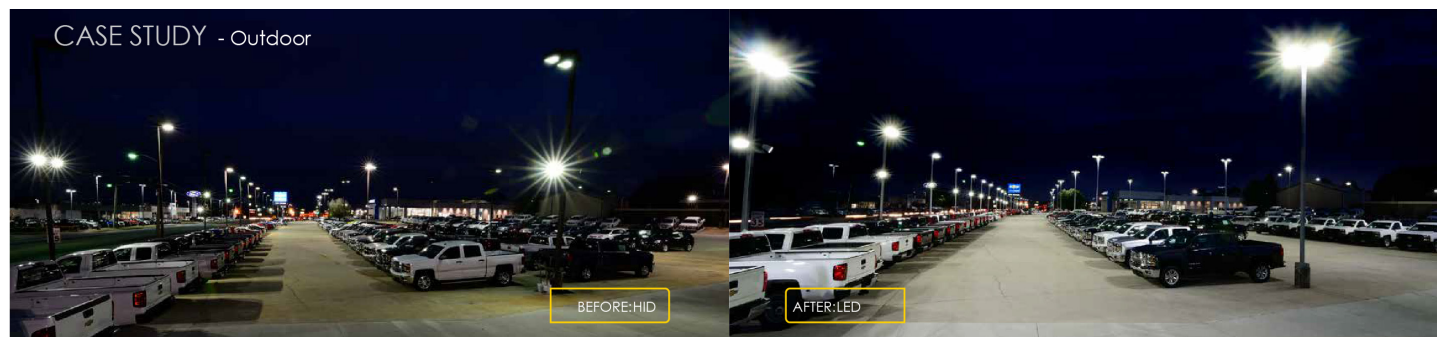
This step takes the above design to a ROI stage. We will provide you all the details. What your current installed lighting systems is, current lighting levels and current energy load. The proposal will provide the approved design, fixture specs, the expected design light levels and cost. Our proposal will breakdown a Return on Investment based on your energy reduction load.

Step 4 – Implementation:

Once you are certain that our proposal meets all your requirements and goals, we can help with the submitted IESO retrofit Save on Energy Program paperwork to help you submit your retrofit for approval and receive the rebates available.

Step 5 – Installation:

We can provide you an option for a turnkey solution with a licenced and certified Electrical Contracting company.



Energy Savings: 62.6%

Prior to the retrofit, the dealership's outdoor lighting consumed 626,546 kWh annually. After the LED retrofit, the electricity consumption fell to 234,183 kWh—or a 62.6% decline. When calculating that drop with a utility rate of \$0.10 per kWh, the dealership reduced its electricity bills from \$62,655 to an estimated \$23,183—an eye-opening \$39,472 in just one year.

Dealer outdoor lighting



52% Energy Savings

- \$155 Annual Savings Per Fixture compared to 400W MH (460 Watts)

Ratio LED

- Featuring Micro Strike Optics which maximizes target zone illumination with minimal losses at the house-side, reducing light trespass issues.



63% Energy Savings

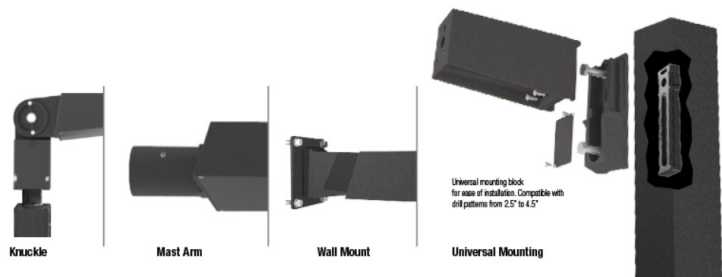
- \$233 Annual Savings Per Fixture compared to 750W MH (764 Watts)

Viper LED

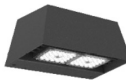
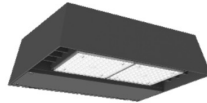
- The Beacon Viper luminaire is available in two sizes with a wide choice of different LED Wattage configurations and optical distributions designed to replace HID lighting up to 1000W MH or HPS. Luminaires are suitable for wet locations.

Ratio family of post top, wall and flood

				
Size	RAR1-80L	RAR1-160L	RAR2-320L	RAR2-480L
Lumens	3,000/6,000	9,000/18,000	15,000/21,000	24,000/48,000
Watts	25/50W	70-135W	110-165W	185-340W
LPW	120	129	136	136
Mounting	Arm & Knuckle	Arm & Knuckle	Arm & Knuckle	Arm & Knuckle
CCT	3K, 4K, 5K	3K, 4K, 5K	3K, 4K, 5K	3K, 4K, 5K
Distributions	II, III, IV, V	II, III, IV, V	II, III, IV, V	II, III, IV, V
IP Rating	IP66	IP66	IP66	IP66
Legacy Equivalence	100-175W	175-400W	250-400W	400-750W



				
Size	RFL2	RFL3	RFL4	RFL5
Lumens	3,500	5,000/7,000	12,000/15,000	18,000/25,000/30,000
Watts	25W	40/50W	95/120W	130/190/265W
LPW	130	125/140	125/130	125/130/115
Mounting	Knuckle, Trunnion	Knuckle, Trunnion	Knuckle, Trunnion	Knuckle, Trunnion
CCT	3K, 4K, 5K	3K, 4K, 5K	3K, 4K, 5K	3K, 4K, 5K
Distributions	N, M, W	N, M, W	N, M, W	N, M, W
IP Rating	IP66	IP66	IP66	IP66
Legacy Equivalence	100-150W	175-250W	250-400W	750W-1000W

		
Size	RWL1	RWL2
Lumens	1,000-5,000	6,000-19,500
Watts	10-45	45-155
LPW	136	148
CCT	3K, 4K, 5K	3K, 4K, 5K
Distributions	III, IV	II, III, IV
IP Rating	IP65	IP65
Legacy Equivalence	42W-175W	175W-400W

Showroom lighting



53% Energy Savings

- \$147 Annual Savings Per Fixture compared to 400W MH (460 Watts)

Megalum

- The industry's first 18,000 lumen recessed LED downlight. With multiple lumen packages, reflector options, and colour temperatures, Megalum illuminates any area with ceiling heights from 20' to 60'.



72% Energy Savings

- \$39 Annual Savings Per Fixture compared to 75W MR16

D2LED

- Prescolite's 2" LED collection is a full family including downlight, wall wash and adjustable fixtures - all designed to be used together in architectural spaces.



63% Energy Savings

- \$206 Annual Savings Per Fixture compared to 400W MH (464 Watts)

LiteFrame LED

- Offers lumen packages from 14,000 to 34,000 LMS for proper illumination on a variety of high bay applications. Efficacy up to 146 LMS/W assures you energy savings over traditional high bay luminaires.



Hubbell Lighting offers a complete line of interior lighting solutions designed to accentuate automobile color, curves and chrome, grabbing your customer's interest. Well designed lighting presents a warm and friendly atmosphere, naturally drawing customers to the sparkling environment inside.

Showroom Lighting

Interior luminaires designed to highlight your automobiles and accent your showroom are available in recessed, surface, pendant and track mounted styles for open, lay-in or hard ceilings. Lighting for all office support functions is offered in similar styles. Hubbell Lighting brands offer the latest in energy-efficient and high performance lighting systems.

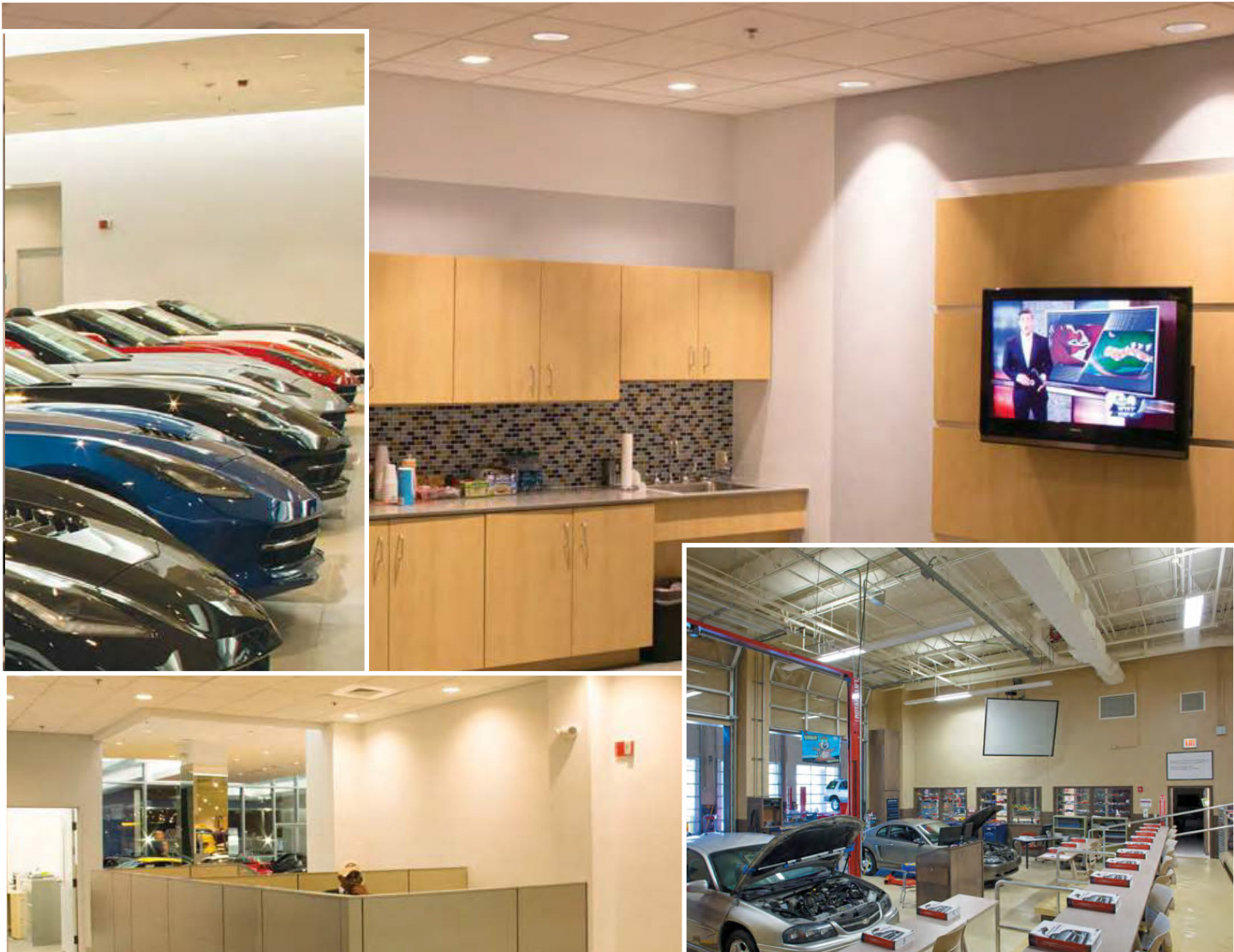
Office & Customer Lounge Areas

Hubbell Lighting brilliantly illuminates office and retail areas, creating a pleasing atmosphere for daily functions. Choose from a wide selection of luminaires in a variety of mounting styles, utilizing the latest in energy efficient LED technology.

Service Bay & Maintenance Areas

Well lit service bays and prep areas are important to your overall customer and staff satisfaction. A wide variety of high bay and low bay luminaires are offered to meet the needs of this important area of the dealership.

Dealer interior lighting



70% Energy Savings

- \$73 Annual Savings Per Fixture compared to 4 Lamp T8

LCAT - LED Contemporary Architectural Toffer



Columbia
LIGHTING

- LCAT provides both design and value with an architectural appearance, LED technology to reduce maintenance and a full family including 2' x 4', 2' x 2', 1' x 4' and 1' x 2' sizes. LCAT is offered with a wide range of options for classrooms, offices, retail and health care applications.

52% Energy Savings

- \$42 Annual Savings Per Fixture compared to 2 Lamp T5HO

MOD™ 6L LED Pendant Direct



LITECONTROL
making light work™

- The MOD™ 6L LED Pendant Direct (6L-P-D) is part of the MODx family, which is an affordably-priced, full-featured offering with best-in-class attention to detail. Variable Intensity technology provides specifiable lumen output/wattage. End cap design eliminates visible diffuser seams/gaps.

67% Energy Savings

- \$221 Annual Savings Per Fixture compared to 400W MH (464 Watts)

Peloton™ High Performance High Bay



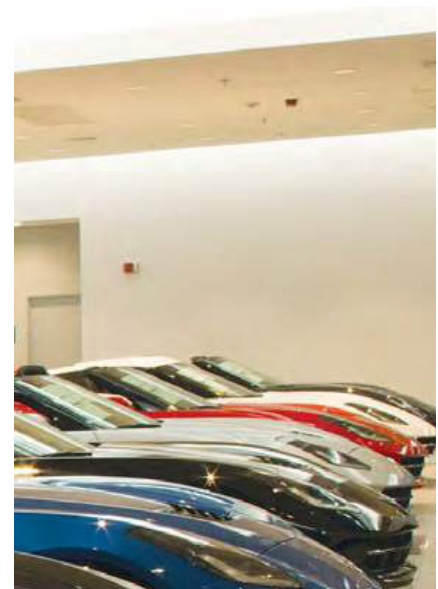
Columbia
LIGHTING

- Peloton™ High Performance High Bay offers extensive lumen packages, Best in Class efficacy and long life for low total cost of ownership and integrated NX Distributed Intelligence™ lighting control options. Available in narrow or wide distribution, Peloton is perfect for warehouses, gymnasiums and light industrial applications.

Service Bay & Maintenance Areas



Well lit service bays and prep areas are important to your overall customer and staff satisfaction. A wide variety of high bay and low bay luminaires are offered to meet the needs of this important area of the dealership.



CVT Linear Vaportite

- Switchable Lumen technology: 7000/5800/4500 lumens
- 4000K or 5000K
- 0-10V dimming to 10%
- IP65/66 rated
- Up to 160 lm/w
- -40°C to 40°C ambient
- Universal voltage (120-277V)



Columbia
LIGHTING

CBL Linear High Bay

- Lumen packages range from 10,000 to 57,000 lumens
- Narrow and Wide lens distribution options
- -40°C to 50°C ambient operating temperatures
- 4000K and 5000K options with 80 CRI
- IP4X rated



Columbia
LIGHTING

CSL Striplight

- 4,000 and 8,000 nominal lumens
- Choice of two color temperatures
- Wide range of applications
- 80+ CRI
- 0-10V dimming
- Surface mount on wall or ceiling
- Universal voltage (120-277V)
- 4000 and 8000 nominal lumens



Columbia
LIGHTING

CRB Wet Location High Bay

- Compact wet location high bay
- IP66 rated
- Lumen packages from 14,000-34,000
- Efficacy up to 143 lumens per watt
- 4000K and 5000K options and 80 CRI
- Durable die-cast aluminum housing and polycarbonate lens
- -30 to 50°C ambient operating temperature range



Columbia
LIGHTING

CNW Narrow Wrap

- 3500 nominal lumens
- 116 lumens per watt
- 4000K CCT
- 0-10V dimming to 10%
- For use in a wide range of surface mount ceiling and wall applications
- 80+ CRI
- Acrylic lens for superior efficiency, resistance to UV aging
- Universal voltage (120-277V)



Columbia
LIGHTING

SAVVANO Decorative High Bay

- The Savvano™ is a decorative high bay available in two sizes (22" and 16") and in a wide range of decorator friendly colors. It has 5 different lumen levels, 3 different reflector options and 5 color temperatures



BRANCH LOCATIONS

ALLSTON
 BARRIE
 BARRIE SOUTH
 BRACEBRIDGE
 COLLINGWOOD
 EXETER
 FLESHERTON
 GODERICH
 HALIBURTON
 HANOVER
 HARRISTON
 HUNTSVILLE
 KESWICK
 KINCARDINE
 LISTOWEL
 MIDLAND
 MITCHELL
 MOUNT FOREST
 NEW HAMBURG
 ORANGEVILLE
 ORILLIA
 OWEN SOUND
 PARRY SOUND
 PORT ELGIN
 SEAFORTH
 SHELBURNE
 ST. MARYS
 STRATFORD
 WALKERTON
 WINGHAM
 WOODSTOCK

At Ideal Supply we also offer a wide range of competitively-priced, state-of-the-art electrical products to the industrial, commercial and residential, construction markets, including the data communications and home automation sectors. Manufacturers and government institutions also rely on Ideal Supply for the latest in industrial products, services, supply agreements and training – all of which help our customers reduce costs and improve productivity. In addition, we offer top-quality automation products, focusing on complete automation solutions backed by both marketing and technical support.



Auto Dealership Program: Ideal Supply Lighting Group

Tel: 519-291-1060 ext. 5902 or 5814

Email: Lighting@idealsupply.com

Website: www.idealsupply.com

Why should you consider LED Retrofits

Ideal Supply can help you achieve the following dramatic benefits without costly infrastructure changes.

- Reduce your hydro usage on lighting by up to 70%
- Reduce long term maintenance cost
- Save on labour cost
- Improve worker satisfaction and productivity
- Improve light levels and productivity
- Improve facility safety
- Install lighting control systems
- Become dark sky friendly on your site
- Reduce your carbon footprint and provide corporate stewardship
- To improve the environment for patient or resident

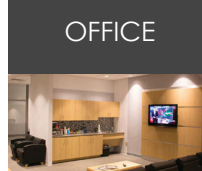
up to **70%**
energy savings



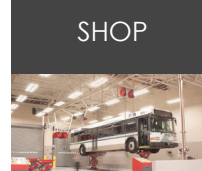
up to **70%**
energy savings



up to **70%**
energy savings



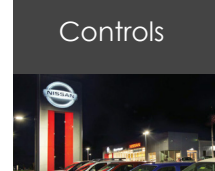
up to **70%**
energy savings



up to **70%**
energy savings



Additional
10-20%
reductions



GS Lighting Group
 A division of Gross Sales Ltd

Dealership Lighting Inventory

Fill out application forms to identify your Lighting System



Exterior

Pole Shape <input type="checkbox"/> Square Straight Steel <input type="checkbox"/> Round Straight Steel <input type="checkbox"/> Square Tapered <input type="checkbox"/> Round Tapered <input type="checkbox"/> Decorative Quantity ____	Fixture Orientation <input type="checkbox"/> Single <input type="checkbox"/> Double <input type="checkbox"/> Triple <input type="checkbox"/> Quad Quantity ____	Building <input type="checkbox"/> Wall Mounted <input type="checkbox"/> Soffit <input type="checkbox"/> Inground Quantity ____	Voltage ____ Wattage ____ Source <input type="checkbox"/> MH <input type="checkbox"/> HPS Mounting Heights • Poles ____ • Building ____ Controls <input type="checkbox"/> Yes <input type="checkbox"/> No
---	---	---	--

Interior

Showroom <input type="checkbox"/> Recessed Fixtures <input type="checkbox"/> Pendant <input type="checkbox"/> Linear Source ____ Voltage ____ Quantity ____ Controls <input type="checkbox"/> Yes <input type="checkbox"/> No	Offices <input type="checkbox"/> Recessed Fixtures <input type="checkbox"/> Pendant <input type="checkbox"/> Linear Source ____ Voltage ____ Quantity ____ Controls <input type="checkbox"/> Yes <input type="checkbox"/> No	Common/Customer Areas <input type="checkbox"/> Recessed Fixtures <input type="checkbox"/> Pendant <input type="checkbox"/> Linear Source ____ Voltage ____ Quantity ____ Controls <input type="checkbox"/> Yes <input type="checkbox"/> No
Service <input type="checkbox"/> Pendant <input type="checkbox"/> Linear Source ____ Voltage ____ Quantity ____ Controls <input type="checkbox"/> Yes <input type="checkbox"/> No	Service Drive Through <input type="checkbox"/> Recessed Fixtures <input type="checkbox"/> Pendant <input type="checkbox"/> Linear Source ____ Voltage ____ Quantity ____ Controls <input type="checkbox"/> Yes <input type="checkbox"/> No	Detailing <input type="checkbox"/> Pendant <input type="checkbox"/> Linear Source ____ Voltage ____ Quantity ____ Controls <input type="checkbox"/> Yes <input type="checkbox"/> No



HUBBELL CANADA
870 Brock Road South Pickering, Ontario
L1W 1Z8 www.hubbell.ca

autoled@hubbell.ca

Due to our continued efforts to improve our products, product specifications are subject to change without notice.
Copyright © 2020 HUBBELL LIGHTING All Rights Reserved. Printed in Canada.