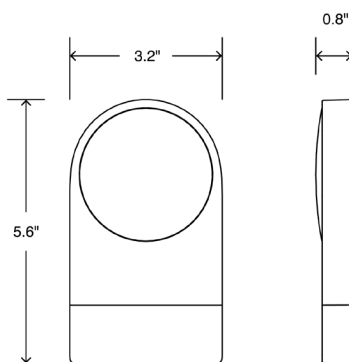


# R Series

## Specifications

### Dimensions

---



### Finishes

---



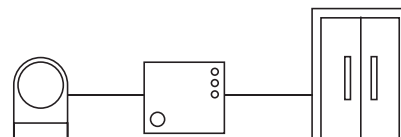
Black

### Configuration

---



Standalone



Panel

## Features

<b>Credential Types</b>	Smartphone, NFC Card, Doorcode
<b>Users</b>	5000
<b>Camera</b>	135° image capture
<b>Integration</b>	With existing access panels or standalone
<b>Management</b>	App and Cloud

## Communication

<b>Wireless Standards</b>	Bluetooth Low Energy (BLE), Near Field Communication (NFC), WiFi in beta (802.11b/g)
<b>Wired Standards</b>	Ethernet, Serial, Wiegand (output only)
<b>NFC Frequency</b>	13.56 MHz
<b>NFC Read Range</b>	Up to 0.75"
<b>NFC Type</b>	MiFare Classic
<b>Supported Smartphones</b>	iOS and Android (see website for full list)
<b>Interface</b>	Mobile apps, touchpad, NFC, and web

## Inputs, Outputs, and Power

<b>Power Type</b>	Class 2 isolated, UL listed DC power supply
<b>Supply Voltage</b>	12V DC to 24V DC
<b>Relay</b>	1.5A @ 24V DC or 16V AC max
<b>Lock Relay</b>	Configurable SPST/normally open relay
<b>Inputs and Outputs</b>	3 configurable inputs/outputs
<b>Termination</b>	10 conductor cable with pre-tinned leads

## Environmental

<b>Operating Temperature</b>	Operating and Storage: -40°C to 66°C, Camera -30°C to 66°C
<b>Operating Humidity</b>	0–93% relative humidity, non-condensing at 32°C
<b>Environmental</b>	IP65, IK04

## Certifications and Warranty

<b>Certifications</b>	FCC Part 15 (US), IC RSS (Canada), UL294, UL/CSA 62368-1, RoHS
<b>Warranty</b>	1-year limited warranty on electronic components, 5-year limited warranty on mechanical components

## Mechanical Specifications

<b>Mounting Options</b>	Surface mount, compatible with single-gang boxes
-------------------------	--