

WATER SAVINGS

connectionsproject



The Connections Project is the largest irrigation modernisation project in Australia. The \$2 billion project is funded by the Victorian and Australian governments and will ensure the sustainable future of productive agriculture in northern Victoria.

The Reset Delivery Plan will ensure the project achieves the required water savings and continues to deliver upgrades to systems and services for water users.



The project is modernising the delivery network. We're moving from a manually operated channel system to a fully automated irrigation delivery system. This creates a channel system with better, more accurate measurement and management of water flows.



We're remodelling channel banks, piping sections of channel and lining channels with clay or plastic to minimise water lost to the system. These works are targeted toward seepage and leakage water losses, which account for up to 45 per cent of overall losses when using an open channel system.



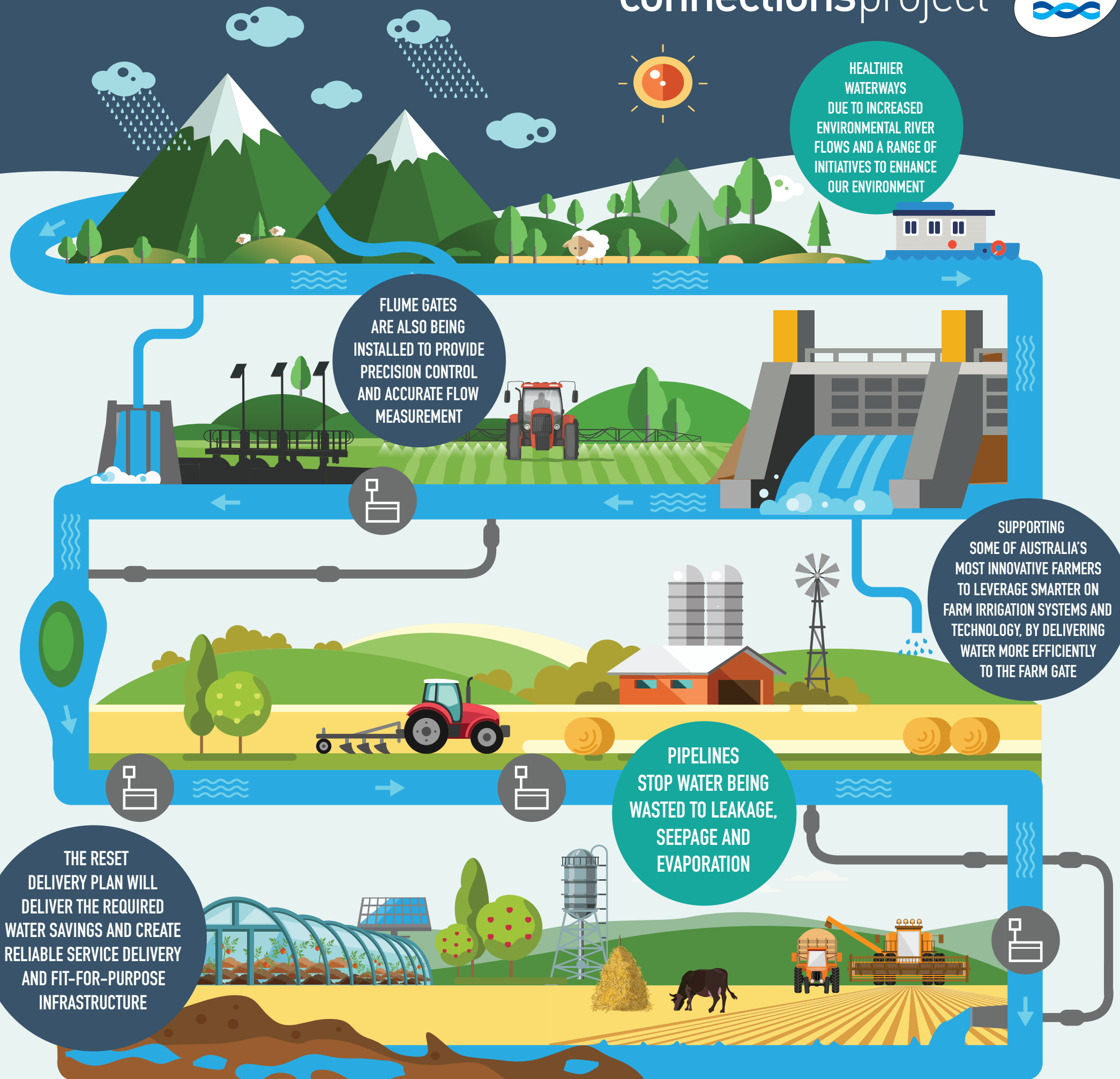
We're decommissioning inefficient spur channels that waste water and creating new and efficient supply connections.



Electronic flow meters are being installed to provide accurate electronic flow rate and volume measurement data. These meters provide greater accuracy and are compliant with national metering standards, unlike the detritus wheel.



Replacing existing open channels with pipelines, stops water being wasted to leakage seepage and evaporation. Our pipelines include gravity, pressurised options and in some cases a hybrid of both gravity and pressurised.



HEALTHIER WATERWAYS
DUE TO INCREASED ENVIRONMENTAL RIVER FLOWS AND A RANGE OF INITIATIVES TO ENHANCE OUR ENVIRONMENT

FLUME GATES ARE ALSO BEING INSTALLED TO PROVIDE PRECISION CONTROL AND ACCURATE FLOW MEASUREMENT

SUPPORTING SOME OF AUSTRALIA'S MOST INNOVATIVE FARMERS TO LEVERAGE SMARTER ON FARM IRRIGATION SYSTEMS AND TECHNOLOGY, BY DELIVERING WATER MORE EFFICIENTLY TO THE FARM GATE

PIPELINES STOP WATER BEING WASTED TO LEAKAGE, SEEPAGE AND EVAPORATION

THE RESET DELIVERY PLAN WILL DELIVER THE REQUIRED WATER SAVINGS AND CREATE RELIABLE SERVICE DELIVERY AND FIT-FOR-PURPOSE INFRASTRUCTURE