

Starter Study

CORN

PURPOSE:

To evaluate various products, applied in-furrow on the seed, and their effects on yield, moisture and return on investment

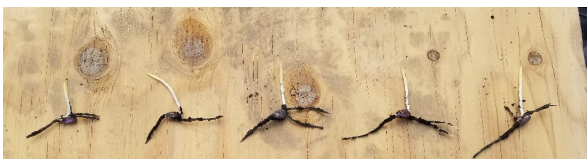
In-Furrow Treatment	Final Stand Count	Percent Moisture	Test Weight	BU. / A.	BU. / A. Difference	ROI
Control: No In-Furrow	31,667	20.9	53.3	205.5	--	--
4 gal. OptiStart®/Climb	33,000	20.4	54.1	213.1	+ 7.6	+ \$13.58
5 gal. 10-34-0	30,333	20.5	54.8	212.6	+ 7.1	+ \$12.91
24 oz. Restore™	33,667	20.8	54.2	214.0	+ 8.5	+ \$11.81
20 oz. All Purpose Plant Food	32,000	21.1	54.4	207.4	+ 1.9	+ \$0.71
2 gal. P Max® Plus	32,667	21.0	52.6	208.8	+ 3.3	- \$6.02
5 gal. PureGrade® Diamond 6-24-6	31,333	21.1	54.3	207.8	+ 2.3	- \$9.32
5 qt. Exodus	32,333	21.4	53.7	206.0	+ .5	- \$25.57

Corn \$3.86/Bu. - Optistart®/Climb \$3.94/gal. - P Max® Plus \$9.38/gal. - PureGrade® Diamond 6-24-6 \$3.64/gal. - Exodus \$22.00/gal. - Restore™ \$112.00/gal.

All Purpose Plant Food \$42.34/gal. - 10-34-0 \$2.90/gal. (individual results may vary.)

OBSERVATION:

I call this a starter study, NOT a starter fertilizer study as there are a few products in this study that hold zero N,P,K values. Products applied in-furrow at planting time should enhance seed germination, boost vigor and root mass, and increase the end ROI. Although all products showed an increase early plant health, cost of products affected the ROI.



Control - 10-34-0 - Restore™ - 6-24-6 - Optistart®/Climb

Research in Collaboration with



2017 AgRevival Research