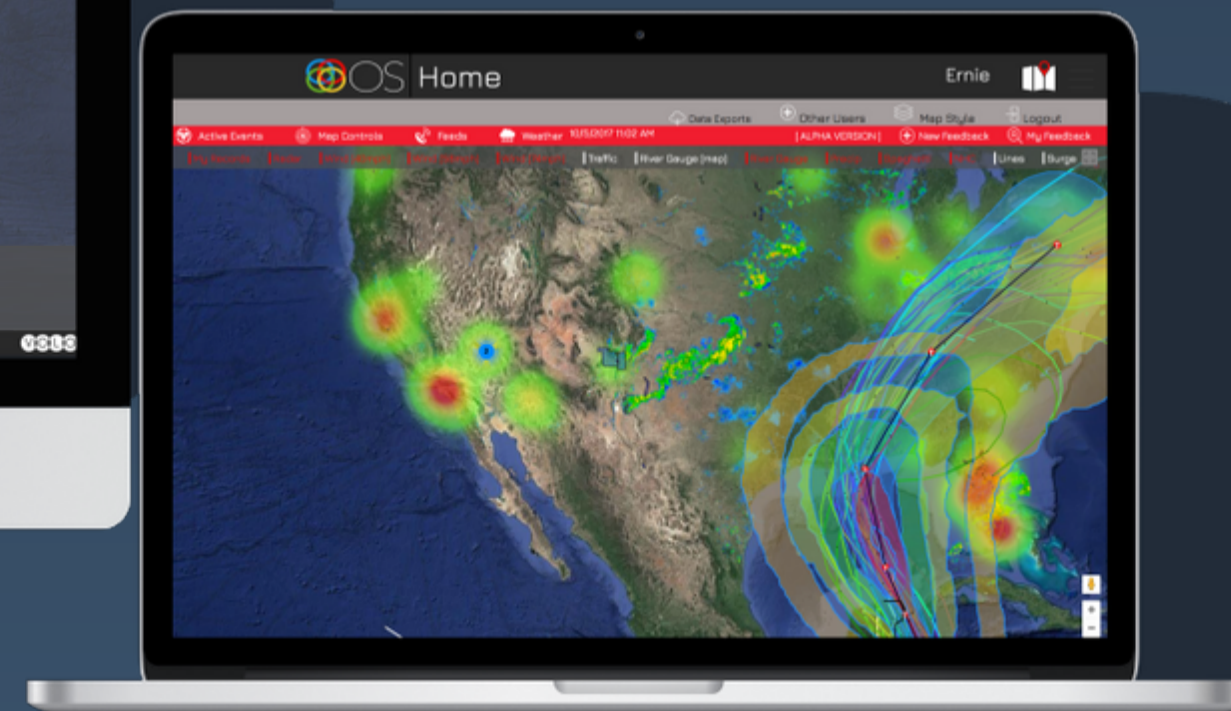


VOLOS

Operations System

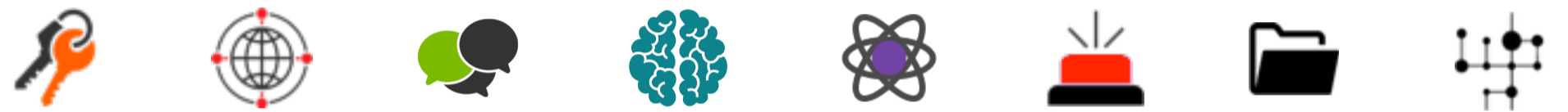


One Platform. Every VOLO App.

VOLO Operations System combines every VOLO tool in one central platform shared across your entire organization.



Applications for every team in your organization



Open API

Built using open architecture, VOLO's newest platform can receive data feeds from virtually any source. Any VOLO app can be activated using our open API for endless possibilities.



Map

At the core of the VOLO experience is Google Maps. Critical data visualization is just a click away. The map is available no matter where you navigate in VOLO.



Database

The VOLO platform was built with flexibility as its guiding principal. That's why we offer the most customizable database structure in the industry.



Permissions

VOLO's platform is designed to be utilized by every team within the organization. This is accomplished through an extremely robust role-based permissions system.

Messenger

VOLO Messenger takes the guess work out of message sending.

- Send voice recorded and TTS phone calls
- Launch intelligent surveys through phone, SMS, email, and mobile app simultaneously
- Auto conferencing
- Select records from groups or geo-selection
- Automated scenario launch from event triggers
- Subscribe to message feeds





VOLO IQ

Intelligent real-time alerting and IoT integration

- Automated severe weather warnings
- Critical event based alerts: terrorism, active shooter, news events
- IoT device integration and alerting
- Real-time IoT device monitoring dashboard
- Intelligent reporting and metrics





EventCenter is the future of business intelligence software NOW

Events

EventCenter is built around capturing event data. Some events are critical, and require triggering automated communication workflows. Other events just need to be captured for overall reporting.

Timeline

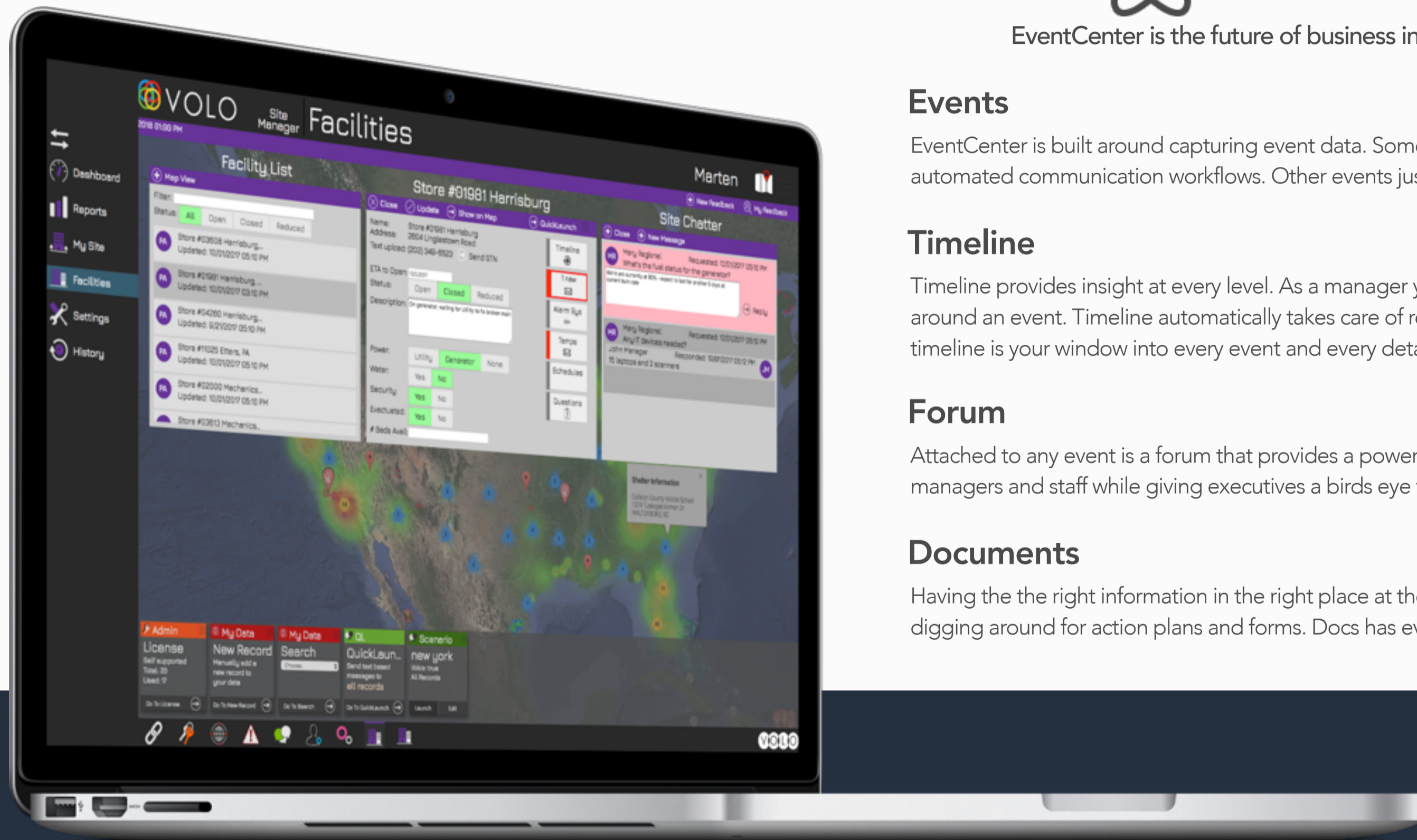
Timeline provides insight at every level. As a manager you no longer have to report every detail around an event. Timeline automatically takes care of reporting the details. As an executive, timeline is your window into every event and every detail.

Forum

Attached to any event is a forum that provides a powerful collaboration workspace for managers and staff while giving executives a birds eye view into the conversation.

Documents

Having the the right information in the right place at the right time is everything. No more digging around for action plans and forms. Docs has everything you need just a click away.





EventCenter is the future of business intelligence software NOW

Messenger Integration

Messenger is the single most powerful integration into event center. Messenger allows you to communicate up and down the chain at the click of a button, all from within the EventCenter application.

Feed

Subscription based automated messaging throughout the organization. Whether you're an associate, manager, or executive, you no longer have to wait for someone else to make the decision to keep you informed. Feed allows you to choose how you receive messages and what you wish to receive them for.

Locations

Every organization has one or more locations. Most events occur at or are associated with a location. EventCenter lets you capture and share important location data such as delayed opening, closings, and other important status information. Every business is unique and even locations within the same business often serve a different purpose. EventCenter allows you to customize every locations status forms.

Org Chart

EventCenter links to your companies Org Chart, providing structure to EventCenter's role based access, which in turn fuels our powerful automated messaging.



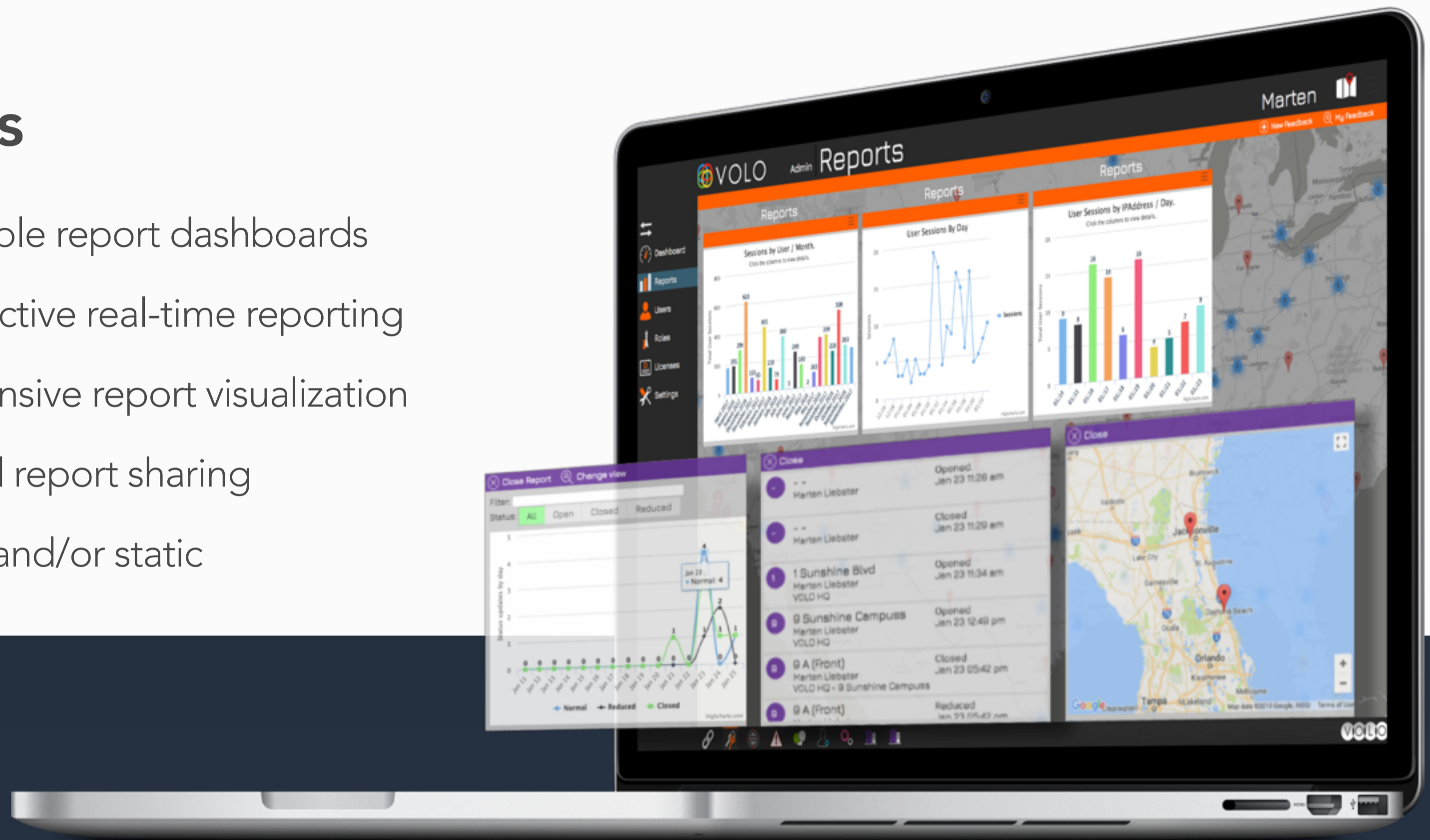


Database

- Proprietary data analysis
- Automated data integration
- Fully customizable field structure
- Relational and/or static
- Automated profile completion

Reports

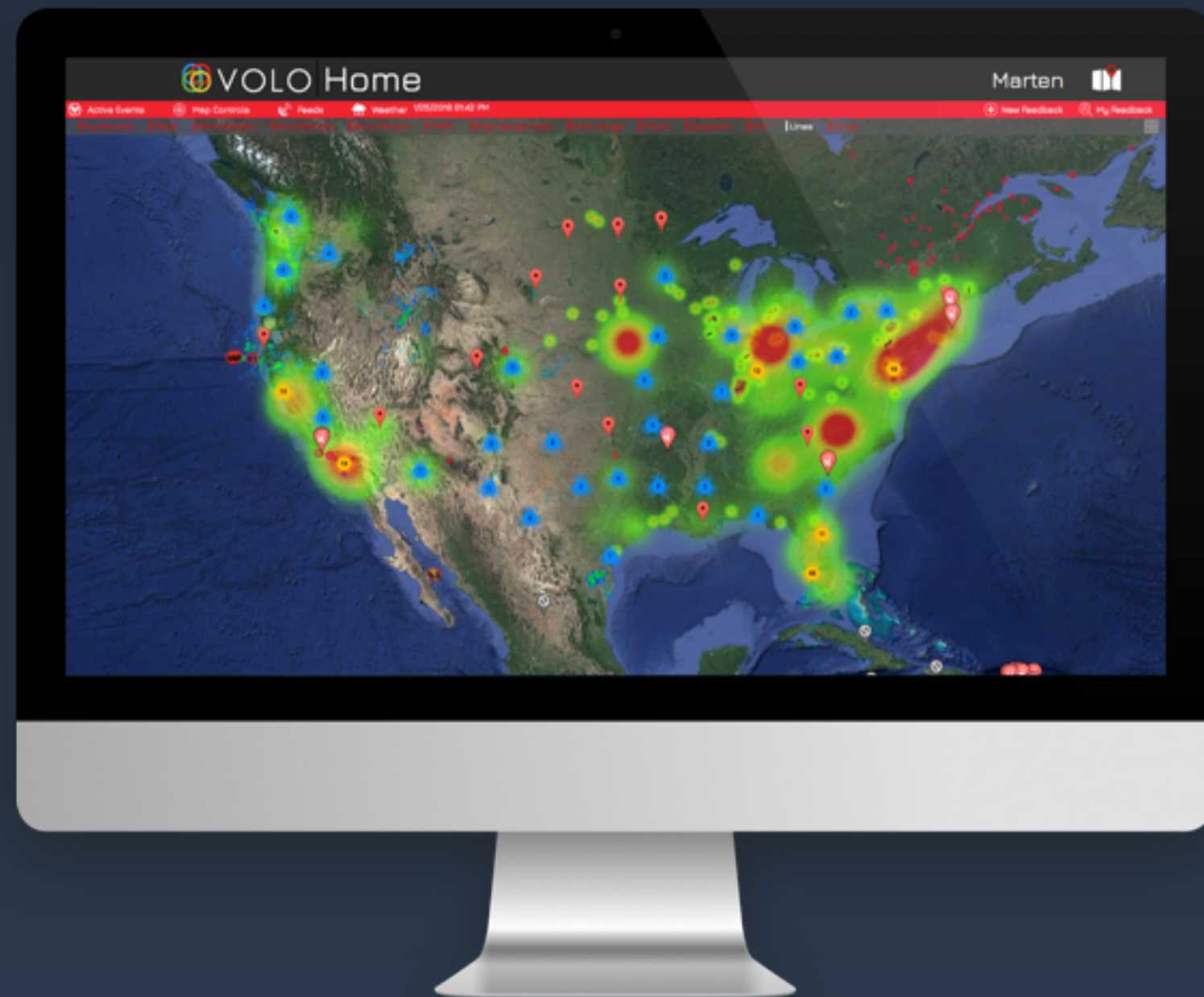
- Customizable report dashboards
- Fully interactive real-time reporting
- Comprehensive report visualization
- Role based report sharing
- Relational and/or static





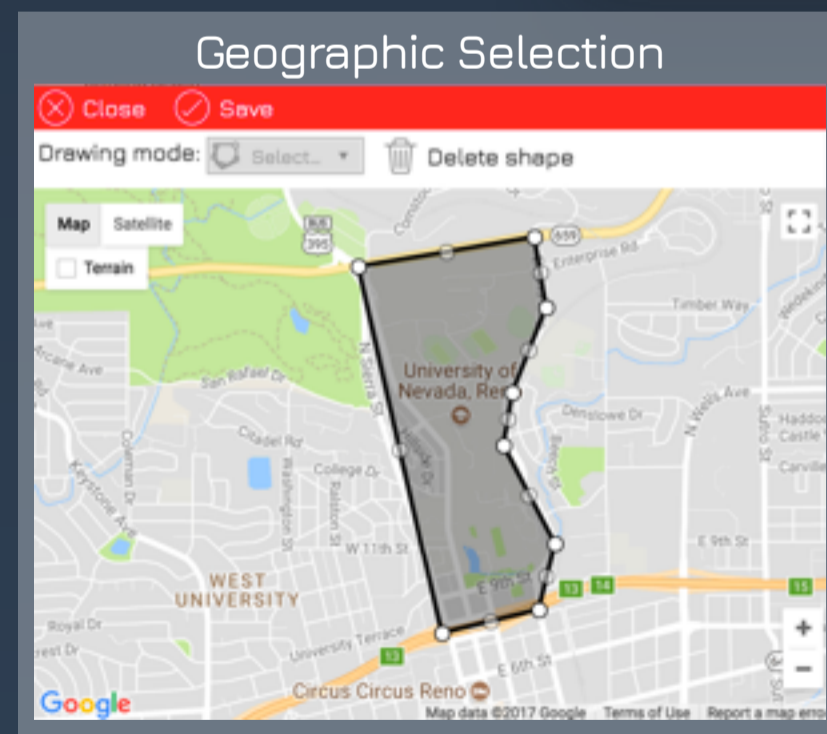
Permissions

- Unlimited number of roles
- Limit access to a single function
- Monitor users activity history
- Share access across the entire enterprise
- Licensing based by use

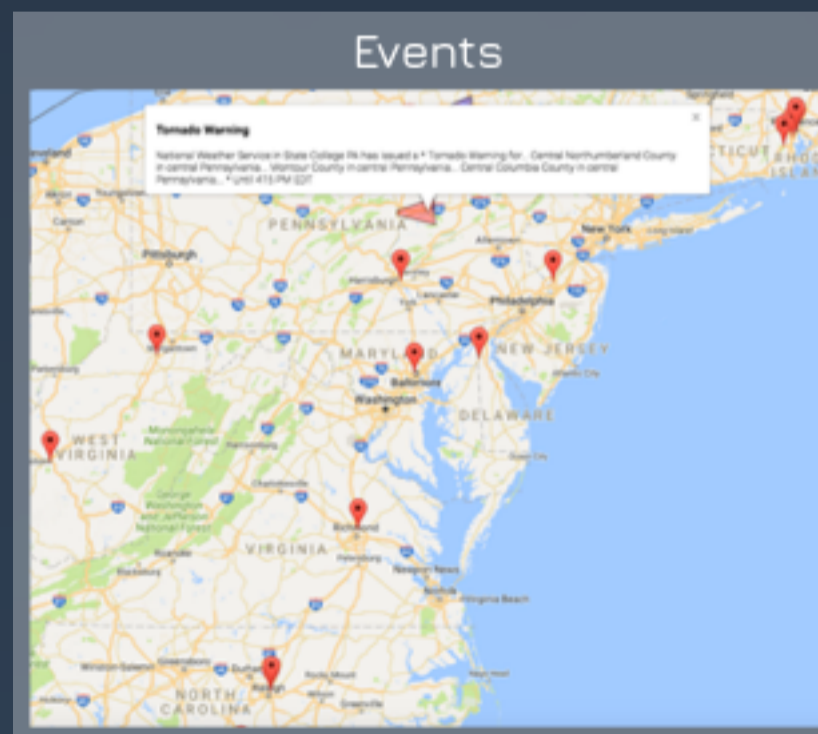


Map

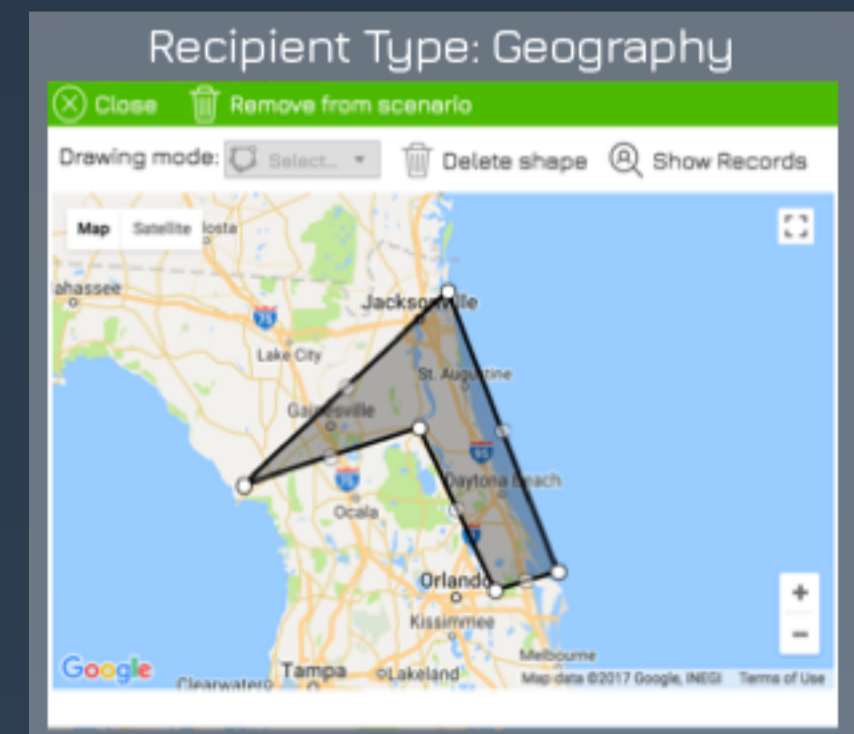
- Fully integrated throughout OS
- Real-time weather feeds and prediction
- Fire, Earthquake, and Volcano warnings
- Track and view employees in real-time
- View live panic alerts and location check-ins



Geo-Fenced Groups



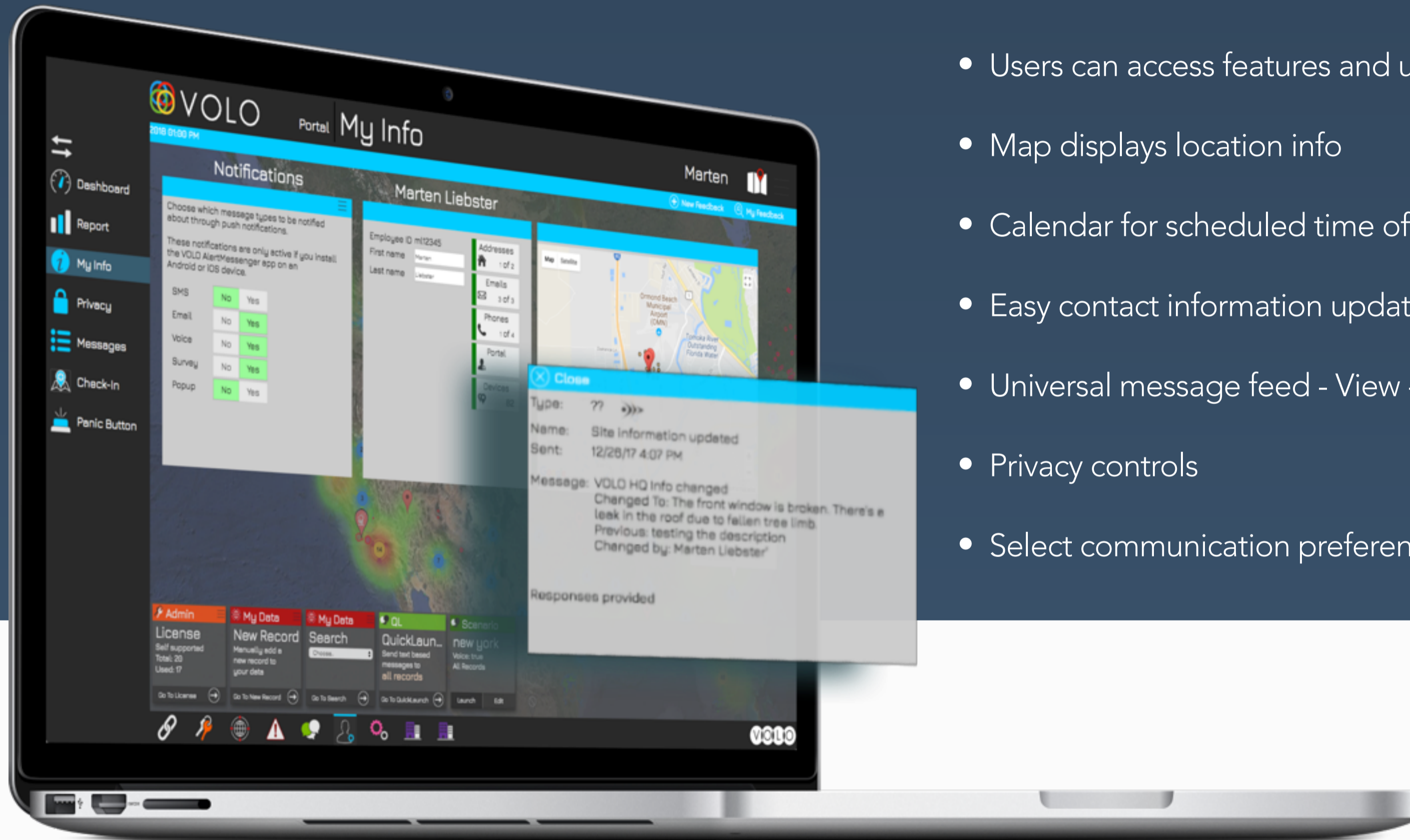
Event Based Visualization



Real-time Recipient Targeting

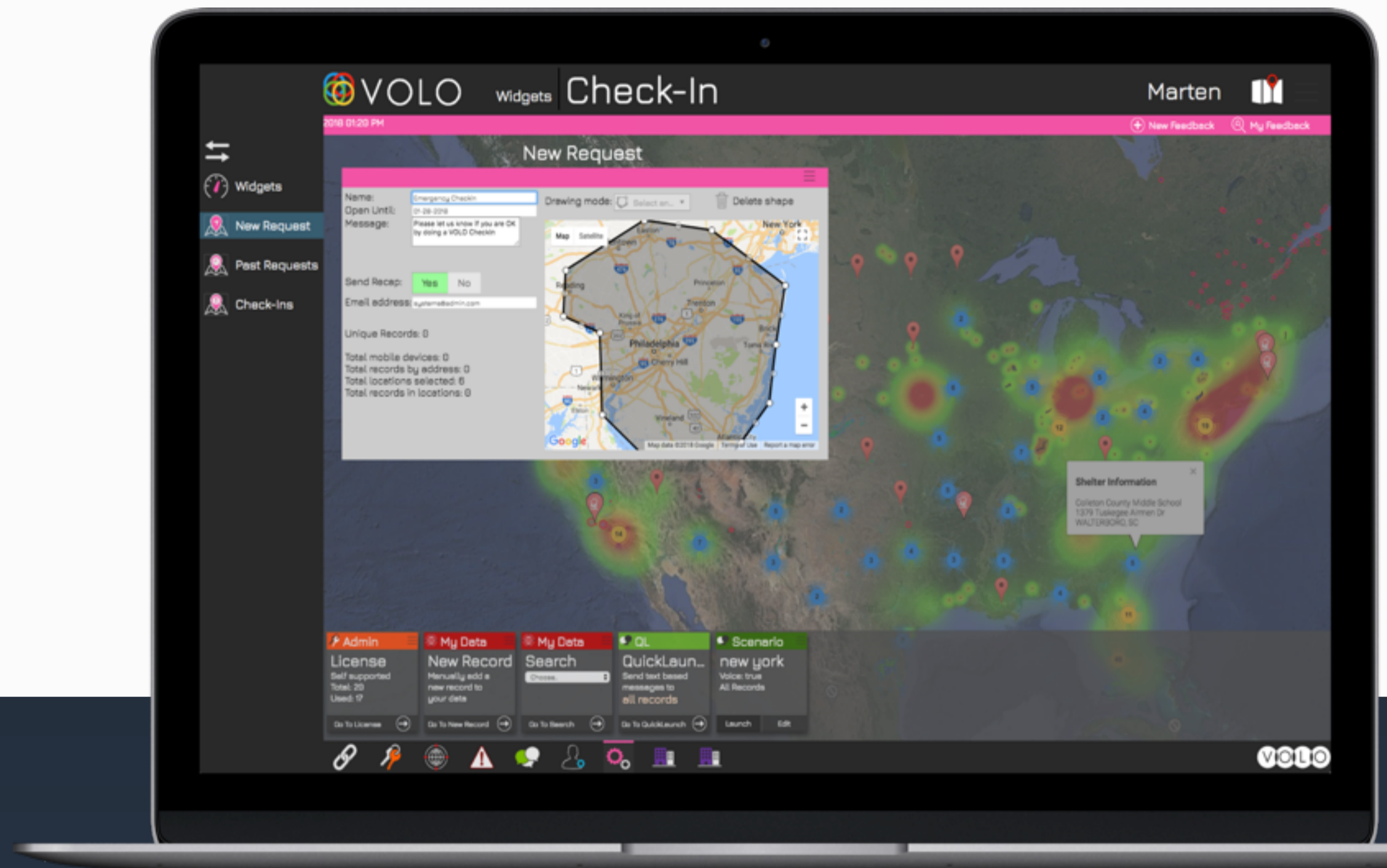
Portal

- Users can access features and update personal information
- Map displays location info
- Calendar for scheduled time off and dynamic scheduling
- Easy contact information updates
- Universal message feed - View - Confirm - Respond - Retrieve
- Privacy controls
- Select communication preferences



Widgets

- Licensed based on use
- Check-in requests
- Desktop popup messages
- Panic button programming
- Enterprise calendar integration



Mobile Optimized

- Optimized for various device types
- HTML5/CSS3/JS for universal compatability
- (SSO) Single sign-on capable



Let's customize your package.

Contact Us



SOFTWARE FOR A SMARTER BUSINESS