

INTEGRATION OF SUBSTANCE USE DISORDER IN WHOLE PERSON CARE



WHEN

AUGUST 18, 2021

10:00 AM- 11:00 AM

This webinar will provide an overview of common co-occurring conditions and the best practices in integrating physical health services and behavioral health services. It will also cover overcoming the barriers in providing whole person care.

Audience:

Clinic Administrators and All Clinician Types: MDs, ARNPs, PAs, RNs, Medical Assistants, Mental Health Professionals, Substance Use Disorder Professionals, Intake Coordinators, Peers, School Counselors and health professionals, other clinicians, and allied health professionals

Information & Registration:

When: Aug 18, 2021 10:00-11:00 AM Pacific Time

Register in advance for this webinar:

https://centene.zoom.us/webinar/register/WN_FjHAA_xYQC2eJRofK19XXQ

PRESENTERS:

Mark Duncan M.D. Assistant Professor
Department of Psychiatry and Behavioral
Sciences University of Washington

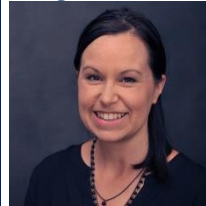


Peninsula Community Health Services:

Bergen Starke, MA, LMHC, SUDP
Director of Behavioral Health



Angie Bland, CPhT
Integrated Care Program Coordinator



Albert Carbo, PharmD, BCACP
Clinical Pharmacist on the integrated
Behavioral Health Team



Sponsored by:

