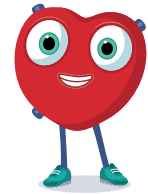


ALL ABOUT ORGANS

SCENARIO CARDS



SELMA

Selma has an eye condition. It started just before she had her daughter. She would wake up in the mornings with misty vision and after a few years Selma's eyesight got worse. She found it very difficult to see and where before she could see colours, now she can only see grey.

ALEX

Alex was born with a serious kidney disease which means his blood is not able to clean itself.

He misses school three days a week to spend time in the hospital having a treatment called 'dialysis'. This is when a machine cleans a person's blood because their kidney can't. It takes a few hours and leaves Alex feeling tired and sometimes sore.

ANNA

Anna has too many white blood cells in her blood. She gets tired out easily and gets lots of infections, which can make her ill and means she often has to rest and stay in bed.

Anna was at college and was training to be a professional dancer, but she has had to stop while she has her treatment.

JAY

Jay's body is not able to absorb enough nutrients from food. He was put onto a drip, which sends special fluids straight into his blood. The fluid contains all the nutrients he needs, like protein, carbohydrates and vitamins.

Sadly, having the drip led to more problems and now Jay is waiting for an organ transplant to save his life.