

QUICK INSTALL GUIDE – Version 1.2.9.0

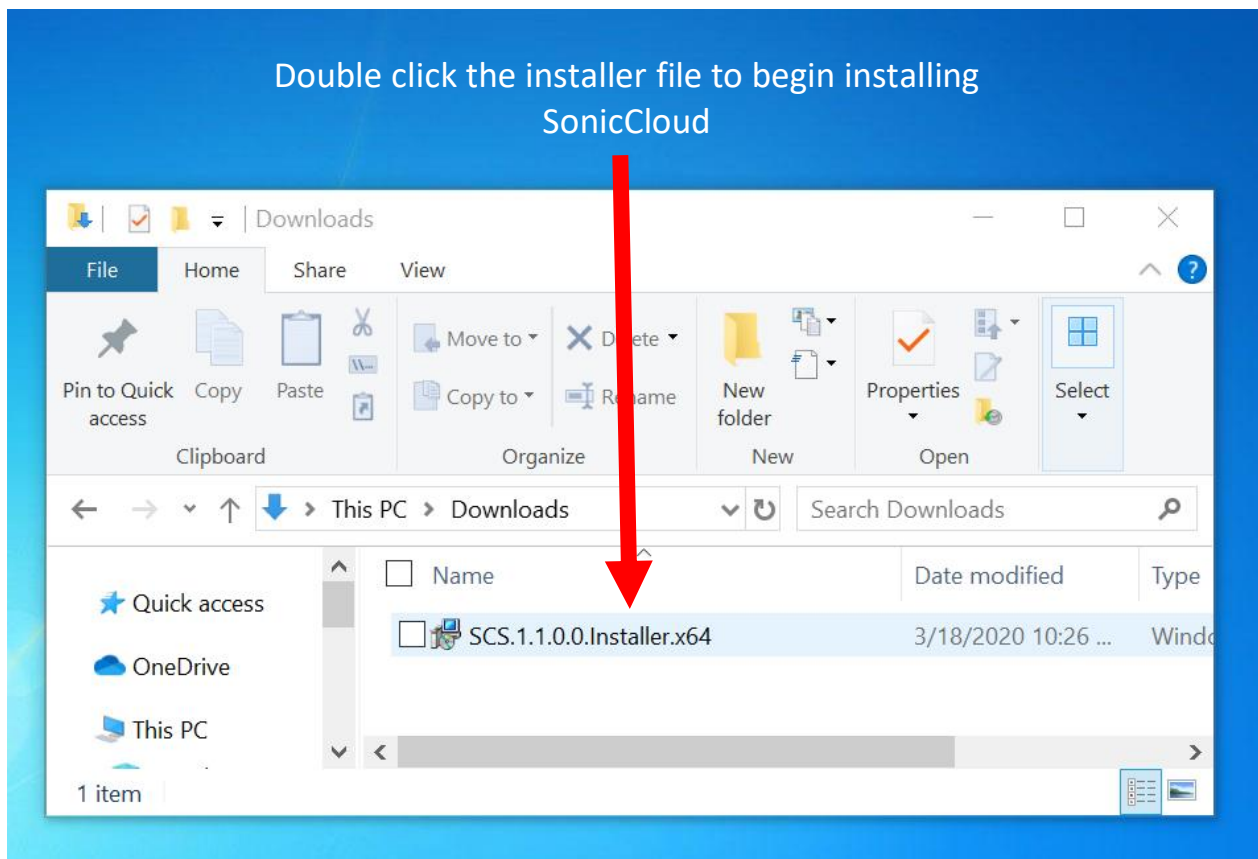
Installing SonicCloud

First, download the installer file for SonicCloud personalization from:

<https://www.soniccloud.com/download>

You'll need to scroll down to the bottom of the page to download the SonicCloud for Windows link.

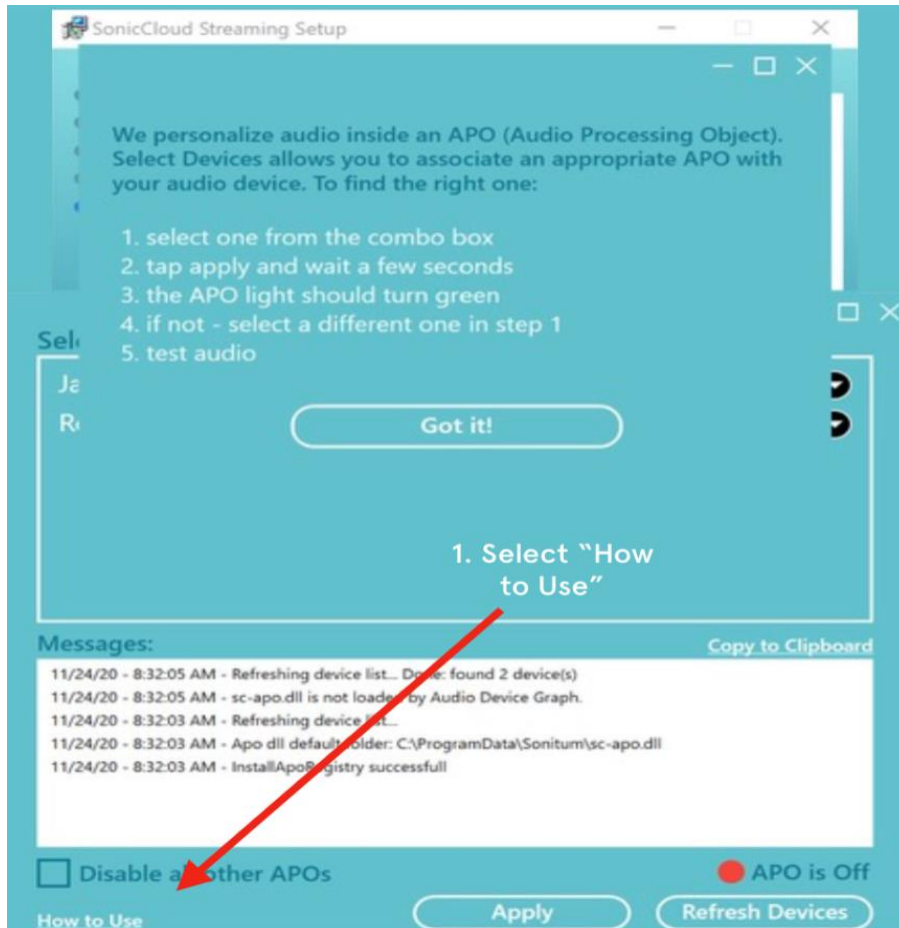
Once you have the file, installation is straightforward. Just double click the installer file you downloaded, and follow the instructions. You may see additional screens asking for permissions; please press **Yes** to proceed.



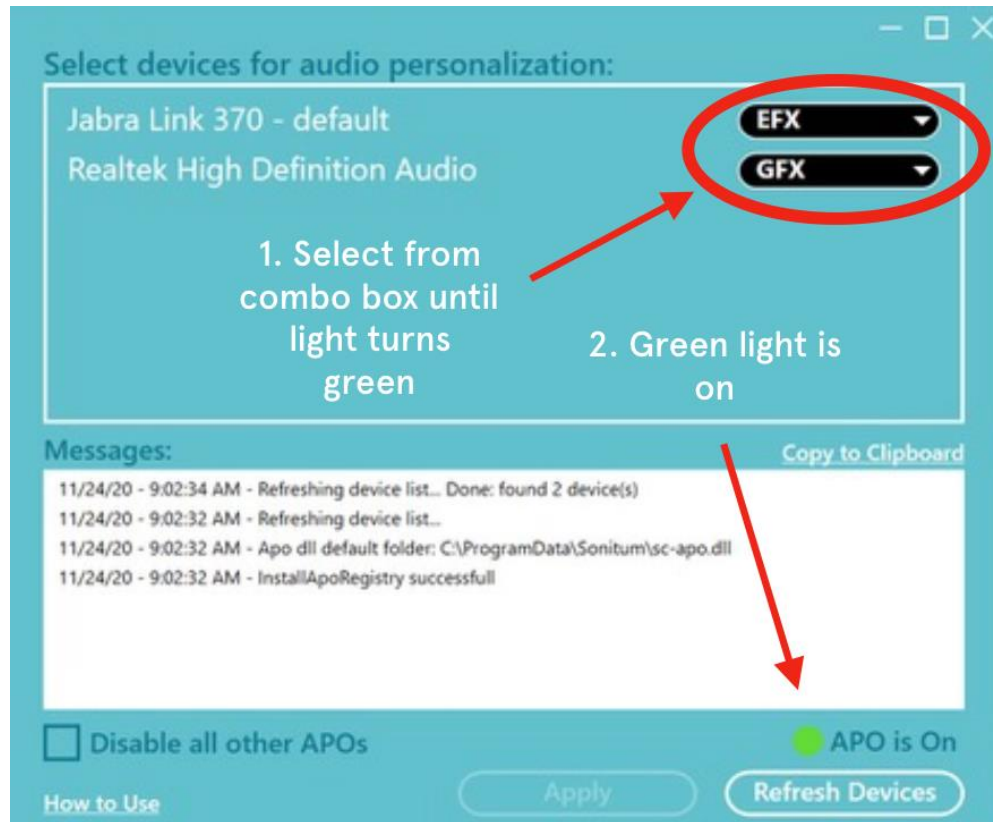
Setup

After installing SonicCloud, a window will pop up, prompting you to select an APO (Audio Processing Device) for each audio device.

Select “**how to use**” in the lower left corner and follow the instructions to select the correct APO from the dropdown (combo) box.

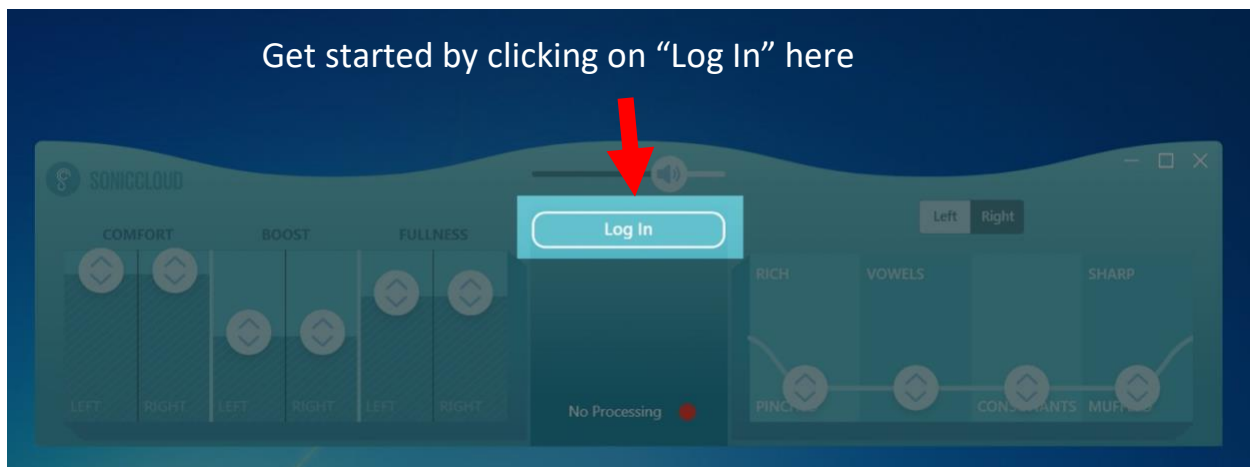


When the correct APO is selected the processing light will turn green. Close the window when you're done.

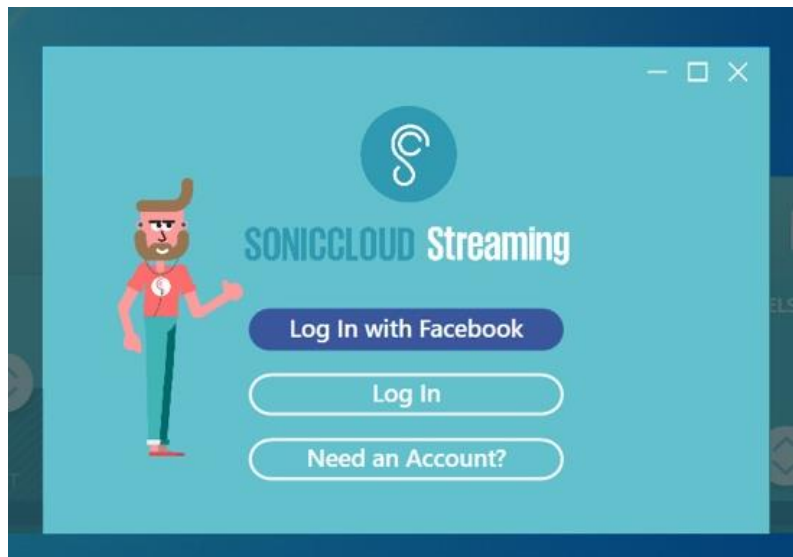


Log In to SonicCloud

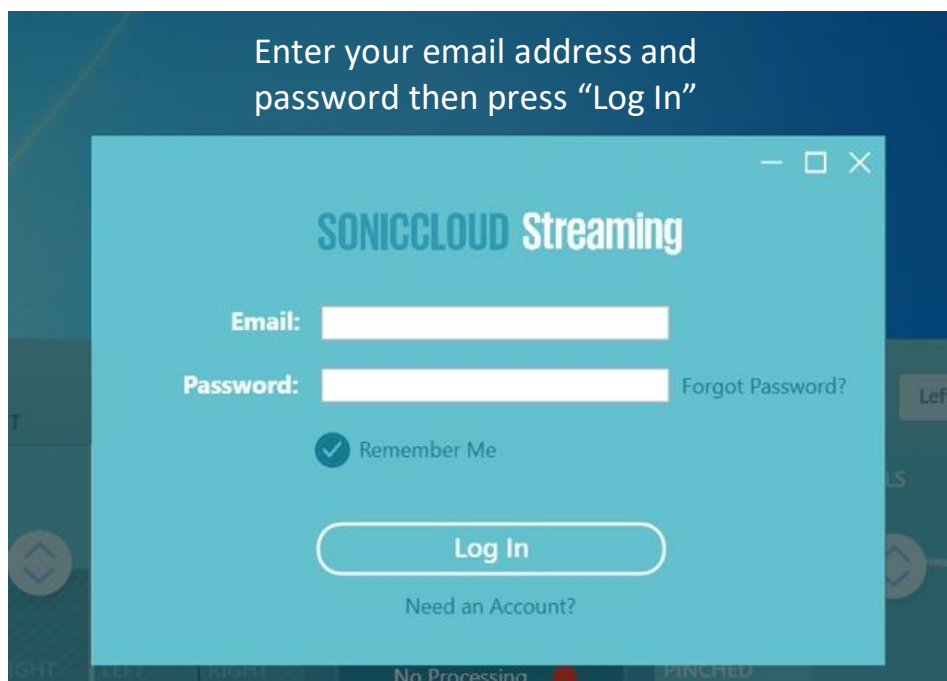
After installing SonicCloud, the SonicCloud console will pop up in the bottom center of your screen. Then click on the **Log In** button in the middle of the SonicCloud console.



You will now see a window that lets you log in to your account. If you already have a SonicCloud Account, please press log in.



....then enter your email and password.



SonicCloud Processing

After logging into SonicCloud, play back any audio (whether from the Web or native audio Files on your computer) to start processing, and the green light will come on again.



You've now completed all the configuration steps for SonicCloud on your computer!